

Oklahoma Corporation Commission
Oil & Gas Conservation Division
Post Office Box 52000
Oklahoma City, Oklahoma 73152-2000
Rule 165: 10-3-25

Form 1002A

API No.: 35103246110000

Completion Report

Spud Date: December 29, 2013

OTC Prod. Unit No.: 103-213922

Drilling Finished Date: January 14, 2014

1st Prod Date: July 15, 2014

Completion Date: July 15, 2014

Drill Type: HORIZONTAL HOLE

Well Name: BIG IRON 5-21N-1E 1WH

Purchaser/Measurer:

Location: NOBLE 4 21N 1E
SW SW SW SW
290 FSL 276 FWL of 1/4 SEC
Derrick Elevation: 1021 Ground Elevation: 997

First Sales Date:

Operator: DEVON ENERGY PRODUCTION CO LP 20751

333 W SHERIDAN AVE DEC 34.428
OKLAHOMA CITY, OK 73102-5010

Completion Type	
<input type="checkbox"/>	Single Zone
<input type="checkbox"/>	Multiple Zone
<input checked="" type="checkbox"/>	Commingled

Location Exception
Order No
623293

Increased Density
Order No
There are no Increased Density records to display.

Casing and Cement							
Type	Size	Weight	Grade	Feet	PSI	SAX	Top of CMT
CONDUCTOR	16"	75#	J-55	80		12	SURFACE
SURFACE	9 5/8"	36#	J-55	529		300	SURFACE
INTERMEDIATE	7"	26#	RYH110C D	5724		380	3243

Liner								
Type	Size	Weight	Grade	Length	PSI	SAX	Top Depth	Bottom Depth
LINER	4.5"	11.6#	RYH110E	4957	0	475	5508	10465

Total Depth: 10465

Packer	
Depth	Brand & Type
There are no Packer records to display.	

Plug	
Depth	Plug Type
There are no Plug records to display.	

Initial Test Data

Test Date	Formation	Oil BBL/Day	Oil-Gravity (API)	Gas MCF/Day	Gas-Oil Ratio Cu FT/BBL	Water BBL/Day	Pumpin or Flowing	Initial Shut-In Pressure	Choke Size	Flow Tubing Pressure
Jul 28, 2014	WOODFORD-MISSISSIPPIAN	358		1000	2793	3439	PUMPING		0/64	

Completion and Test Data by Producing Formation

Formation Name: WOODFORD

Code: 319WDFD

Class: OIL

Spacing Orders

Order No	Unit Size
622813	640

Perforated Intervals

From	To
5774	7459
7989	10292

Acid Volumes

There are no Acid Volume records to display.

Fracture Treatments

There are no Fracture Treatments records to display.

Formation Name: MISSISSIPPIAN

Code: 359MSSP

Class: OIL

Spacing Orders

Order No	Unit Size
622813	640

Perforated Intervals

From	To
7546	7902

Acid Volumes

There are no Acid Volume records to display.

Fracture Treatments

There are no Fracture Treatments records to display.

Formation Name: WOODFORD-MISSISSIPPIAN

Code:

Class: OIL

Spacing Orders

Order No	Unit Size
There are no Spacing Order records to display.	

Perforated Intervals

From	To
There are no Perf. Intervals records to display.	

Acid Volumes

833 BBLS OF ACID (13 STAGES)

Fracture Treatments

132,465 BBLS OF FLUID
1,130,604 #30/50
435,198 #20/40

Were open hole logs run? No

Date last log run:

Were unusual drilling circumstances encountered? No

Explanation:

Formation	Top
WOODFORD	5609
MISSISSIPPIAN	7490

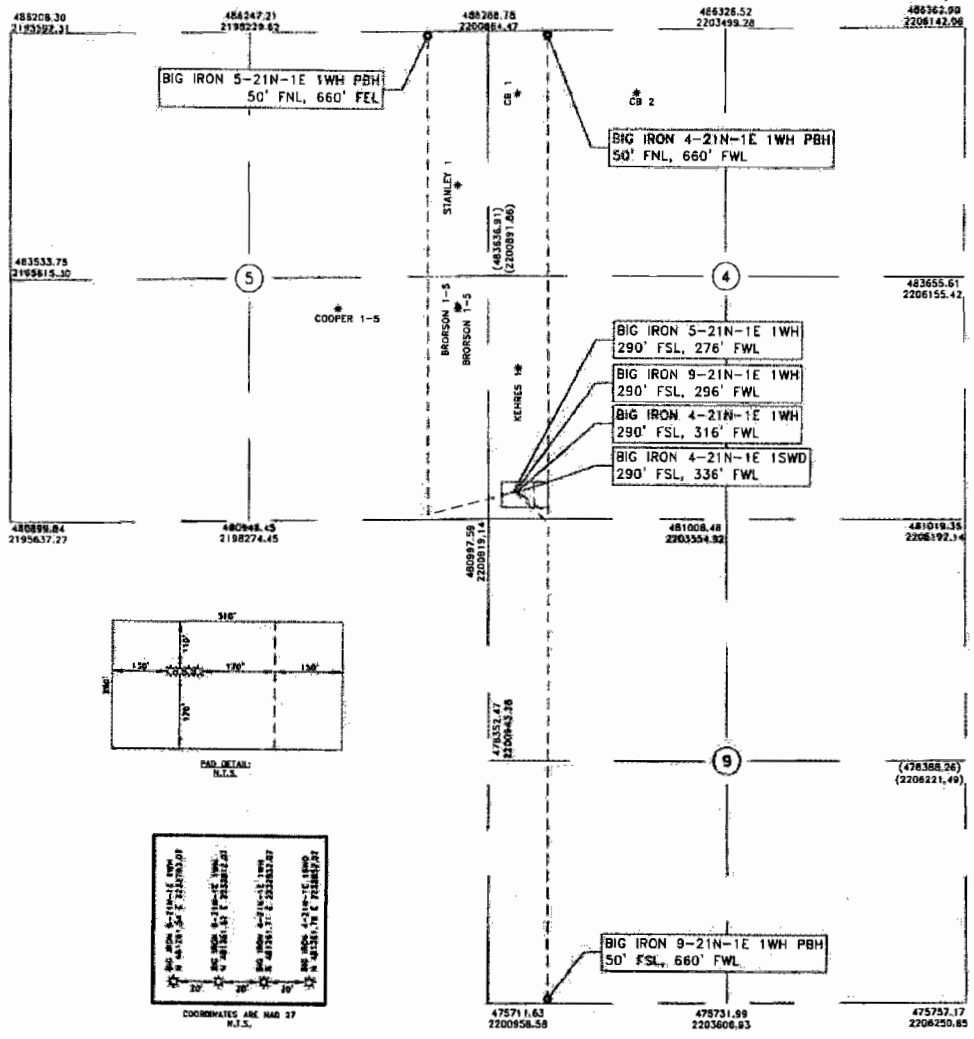
Other Remarks
IRREGULAR SECTION. OCC: FLE ORDER HAS NOT BEEN ISSUED. WE HAVE ACCEPTED OPERATORS DATA AS SUBMITTED.

Lateral Holes
<p>Sec: 5 TWP: 21N RGE: 1E County: NOBLE</p> <p>NW NE NE NE</p> <p>155 FNL 656 FEL of 1/4 SEC</p> <p>Depth of Deviation: 4124 Radius of Turn: 784 Direction: 349 Total Length: 5557</p> <p>Measured Total Depth: 10465 True Vertical Depth: 4932 End Pt. Location From Release, Unit or Property Line: 155</p>

FOR COMMISSION USE ONLY	
Status: Accepted	1125338

SECTIONS 4, 5 AND 9,
T 21 N - R 1 E, I.M.,
NOBLE COUNTY, OKLAHOMA

BASIS OF BEARINGS
GRID NORTH
NAD 83, OK NORTH
VERT. DATUM = NAVD 88



NOTE: COORDINATES SHOWN IN (PARENTHESES) ARE BASED UPON LOCAL OCCUPATION AND IMPROVEMENTS OR CALCULATED PER PROPORTIONAL MEASUREMENT

J. Wyatt Bishop 1-22-14
DATE
J. WYATT BISHOP
OKLAHOMA L.P.L.S. NO.: 1649

NOTE:
This plat represents a proposed well site and does not represent a true boundary survey. This location has been very carefully staked on the ground according to the latest G.L.O. records, U.S.G.S. maps and photographs available to us, but its accuracy is not guaranteed. Review this plat and notify Gateway Services Group, LLC immediately of any possible discrepancy.

LEGEND

- SURFACE HOLE LOCATION = *
- PROPOSED BOTTOM HOLE LOCATION = • (INFORMATION PROVIDED BY CLIENT)
- EXISTING WELL = * (INFORMATION PROVIDED BY OTHERS)
- PROPOSED LATERAL = - - -

LICENSED PROFESSIONAL LAND SURVEYOR
J. Wyatt Bishop
1-22-14
1649
OKLAHOMA

Devon Energy Production Company, LP.
333 W. Sheridan
Oklahoma City, OK 73102

devon

PO. BOX 980
MEEKER, OK 74855
OFF. (405) 273-0954
FAX (405) 273-0580
C.A. NO. 4091 (LS)
EXP. DATE 6-30-2014

Gateway
Gateway Services Group, LLC

WELL LOCATION
BIG IRON 5-21N-1E 1WH, BIG IRON 9-21N-1E 1WH,
BIG IRON 4-21N-1E 1WH, BIG IRON 4-21N-1E 1SWD
SECTIONS 4, 5 AND 9,
T 21 N - R 1 E, I.M.,
NOBLE COUNTY, OKLAHOMA

DRAWN BY: RLG DATE: 11/20/13 CHK'D: B.J.H.
GATEWAY NO.: 13-0644-DODG R2 SCALE: 1"=2000'
Y.B.S. NO.: 01-07005, 01-07006, 01-07007

REV.	DWN.	DESCRIPTION	DATE
1	RLG	RESTATE	11/26/13
2	RLG	ADDED SWD/ELEV. UPDATE	1/21/14