

Oklahoma Corporation Commission
Oil & Gas Conservation Division
Post Office Box 52000
Oklahoma City, Oklahoma 73152-2000
Rule 165: 10-3-25

Form 1002A

API No.: 35103246190000

Completion Report

Spud Date: January 26, 2014

OTC Prod. Unit No.: 103-213924

Drilling Finished Date: February 10, 2014

1st Prod Date: July 15, 2014

Completion Date: July 15, 2014

Drill Type: HORIZONTAL HOLE

Well Name: BIG IRON 4-21N-1E 1WH

Purchaser/Measurer:

Location: NOBLE 4 21N 1E
SW SW SW SW
290 FSL 316 FWL of 1/4 SEC
Derrick Elevation: 1022 Ground Elevation: 998

First Sales Date:

Operator: DEVON ENERGY PRODUCTION CO LP 20751

333 W SHERIDAN AVE DEC 34.428
OKLAHOMA CITY, OK 73102-5010

Completion Type	
X	Single Zone
	Multiple Zone
	Commingled

Location Exception	
Order No	
620453	

Increased Density	
Order No	
There are no Increased Density records to display.	

Casing and Cement							
Type	Size	Weight	Grade	Feet	PSI	SAX	Top of CMT
CONDUCTOR	16"	75#	J-55	85		14	SURFACE
SURFACE	9 5/8"	36#	J-55	510		300	SURFACE
INTERMEDIATE	7"	26#	RYH110	5533		380	2982

Liner								
Type	Size	Weight	Grade	Length	PSI	SAX	Top Depth	Bottom Depth
LINER	4.5"	11.6#	RYH110C D	5115	0	545	5405	10520

Total Depth: 10520

Packer	
Depth	Brand & Type
There are no Packer records to display.	

Plug	
Depth	Plug Type
There are no Plug records to display.	

Initial Test Data										
Test Date	Formation	Oil BBL/Day	Oil-Gravity (API)	Gas MCF/Day	Gas-Oil Ratio Cu FT/BBL	Water BBL/Day	Pumpin or Flowing	Initial Shut-In Pressure	Choke Size	Flow Tubing Pressure
Jul 27, 2014	WOODFORD	354		1345	3799	2584	PUMPING		0/64	

Completion and Test Data by Producing Formation										
Formation Name: WOODFORD			Code: 319WDFD			Class: OIL				
Spacing Orders				Perforated Intervals						
Order No		Unit Size		From			To			
617307		640		5583			10372			
Acid Volumes				Fracture Treatments						
913 BBLS OF ACID (14 STAGES)				150,872 BBLS OF FLUID						
				826,418 #30/50						
				381,157 #20/40						
				5,000 100 MESH						

Formation	Top
WOODFORD	5454

Were open hole logs run? No

Date last log run:

Were unusual drilling circumstances encountered? No

Explanation:

Other Remarks
IRREGULAR SECTION. OCC: FLE ORER HAS NOT BEEN ISSUED. WE HAVE ACCEPTED OPERATORS DATA AS SUBMITTED.

Lateral Holes

Sec: 4 TWP: 21N RGE: 1E County: NOBLE

NW NE NW NW

154 FNL 661 FWL of 1/4 SEC

Depth of Deviation: 4221 Radius of Turn: 683 Direction: 3 Total Length: 5616

Measured Total Depth: 10520 True Vertical Depth: 4885 End Pt. Location From Release, Unit or Property Line: 154

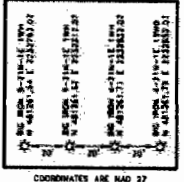
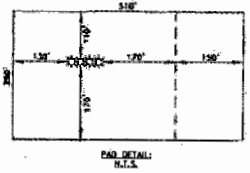
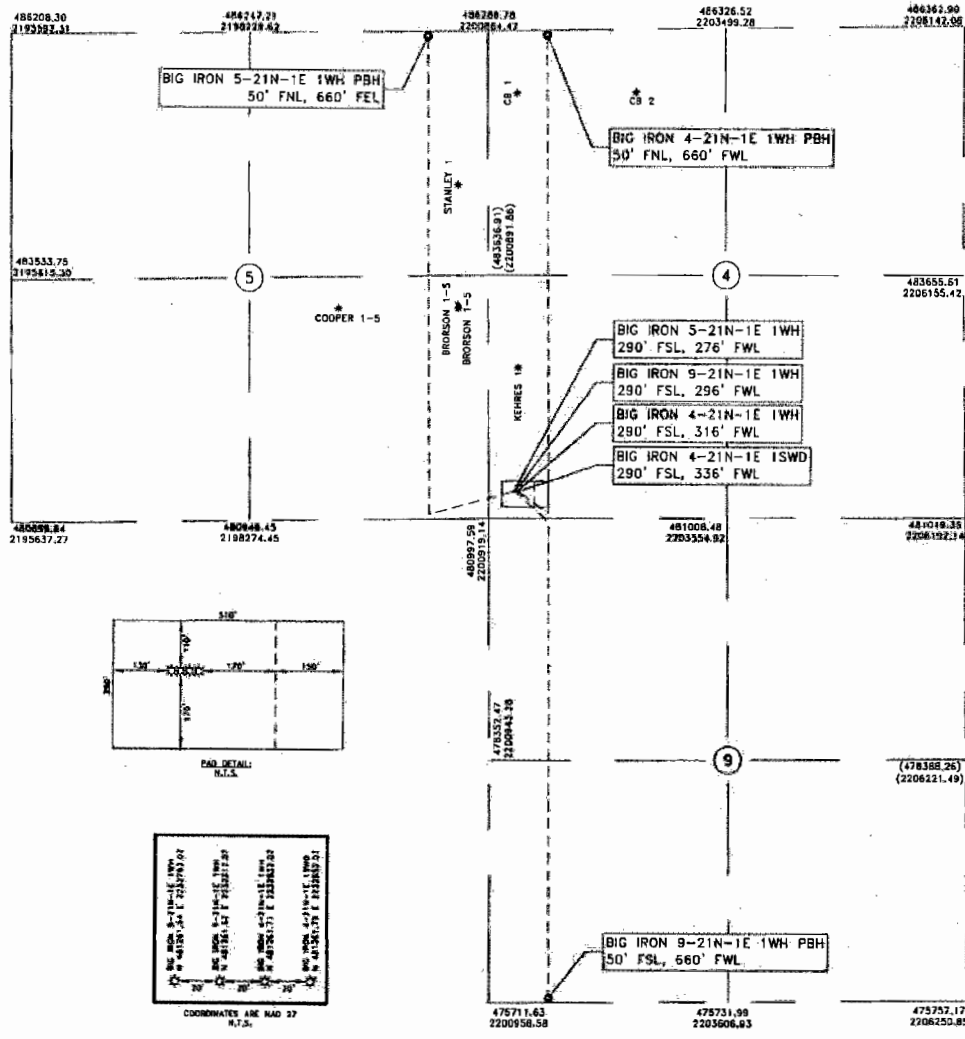
FOR COMMISSION USE ONLY

1125406

Status: Accepted

SECTIONS 4, 5 AND 9,
T 21 N - R 1 E, I.M.,
NOBLE COUNTY, OKLAHOMA

BASIS OF BEARINGS
GRID NORTH
NAD 83, OK NORTH
VERT. DATUM = NAVD 88



NOTE: COORDINATES SHOWN IN (PARENTHESES)
ARE BASED UPON LOCAL OCCUPATION AND IMPROVEMENTS OR
CALCULATED PER PROPORTIONAL MEASUREMENT

J. Wyatt Bishop 1-22-14
J. WYATT BISHOP DATE
OKLAHOMA L.P.L.S. NO.: 1649

NOTE:
This plat represents a proposed well site and does not represent a true boundary survey. This location has been very carefully staked on the ground according to the latest G.L.O. records, U.S.G.S. maps and photographs available to us, but its accuracy is not guaranteed. Review this plat and notify Gateway Services Group, LLC immediately of any possible discrepancy.

LEGEND

- SURFACE HOLE LOCATION = ☼
- PROPOSED BOTTOM HOLE LOCATION (INFORMATION PROVIDED BY CLIENT) = ●
- EXISTING WELL (INFORMATION PROVIDED BY OTHERS) = ☼
- PROPOSED LATERAL = ———

LICENSED PROFESSIONAL LAND SURVEYOR
J. Wyatt Bishop
1-22-14
1649
OKLAHOMA

Devon Energy Production Company, LP.
333 W. Sheridan
Oklahoma City, OK 73102

devon

PO. BOX 960
MEEKER, OK 74855
OFF. (405) 273-0954
FAX (405) 273-0580
C.A. NO. 4091 (LS)
EXP. DATE 8-30-2014

Gateway
Gateway Services Group, LLC

WELL LOCATION
BIG IRON 5-21N-1E 1WH, BIG IRON 9-21N-1E 1WH,
BIG IRON 4-21N-1E 1WH, BIG IRON 4-21N-1E 1SWD
SECTIONS 4, 5 AND 9,
T 21 N - R 1 E, I.M.,
NOBLE COUNTY, OKLAHOMA

DRAWN BY: RLG DATE: 11/29/13 CHK'D: BJH
GATEWAY NO.: 13-0644-000G R2 SCALE: 1"=2000'
W.E.S. NO.: 01-07005, 01-07006, 01-07007

REV.	DWN.	DESCRIPTION	DATE
1	RLG	RE-STAKE	11/26/13
2	RLG	ADDED SWD/ELEV. UPDATE	1/21/14