

Oklahoma Corporation Commission
Oil & Gas Conservation Division
Post Office Box 52000
Oklahoma City, Oklahoma 73152-2000
Rule 165: 10-3-25

Form 1002A

API No.: 35151240710000

Completion Report

Spud Date: March 14, 2014

OTC Prod. Unit No.: 151-213420

Drilling Finished Date: March 28, 2014

1st Prod Date: May 13, 2014

Completion Date: April 24, 2014

Drill Type: HORIZONTAL HOLE

Min Gas Allowable: Yes

Well Name: OAKLEY CASH 3-27-17 1H

Purchaser/Measurer: CHESAPEAKE OPERATING INC

Location: WOODS 3 27N 17W
NE NE NW NW
265 FNL 1275 FWL of 1/4 SEC
Derrick Elevation: 1833 Ground Elevation: 1818

First Sales Date: 05/14/2014

Operator: CHESAPEAKE OPERATING INC 17441
PO BOX 18496
6100 N WESTERN AVE
OKLAHOMA CITY, OK 73154-0496

Completion Type	
X	Single Zone
	Multiple Zone
	Commingled

Location Exception
Order No
622767

Increased Density
Order No
There are no Increased Density records to display.

Casing and Cement							
Type	Size	Weight	Grade	Feet	PSI	SAX	Top of CMT
SURFACE	9 5/8	36	J-55	990		385	SURFACE
PRODUCTION	7	26	P-110EC	5965		220	4830

Liner								
Type	Size	Weight	Grade	Length	PSI	SAX	Top Depth	Bottom Depth
LINER	4 1/2	11.60	HCP-110	4554	0	520	5766	10320

Total Depth: 10320

Packer	
Depth	Brand & Type
5718	AS-3

Plug	
Depth	Plug Type
There are no Plug records to display.	

Initial Test Data										
Test Date	Formation	Oil BBL/Day	Oil-Gravity (API)	Gas MCF/Day	Gas-Oil Ratio Cu FT/BBL	Water BBL/Day	Pumpin or Flowing	Initial Shut-In Pressure	Choke Size	Flow Tubing Pressure
Jun 01, 2014	MISSISSIPPIAN	173		388	2243	1896	ARTIFICIA			114

Completion and Test Data by Producing Formation										
Formation Name: MISSISSIPPIAN			Code: 359MSSP			Class: OIL				
Spacing Orders				Perforated Intervals						
Order No	Unit Size			From			To			
622128	640			5850			10190			
Acid Volumes				Fracture Treatments						
14,500 GALLONS HCL ACID				44,082 BARRELS FRAC FLUID, 466,040 POUNDS PROPPANT						

Formation	Top
MISSISSIPPIAN	5799

Were open hole logs run? No
Date last log run:

Were unusual drilling circumstances encountered? No
Explanation:

Other Remarks
OCC: FLE ORDER HAS NOT BEEN ISSUED. WE HAVE ACCEPTED OPERATORS DATA AS SUBMITTED. IRREGULAR SECTION.

Lateral Holes
Sec: 3 TWP: 27N RGE: 17W County: WOODS SW SE SW SW 176 FSL 755 FWL of 1/4 SEC Depth of Deviation: 5232 Radius of Turn: 483 Direction: 184 Total Length: 4521 Measured Total Depth: 10320 True Vertical Depth: 5715 End Pt. Location From Release, Unit or Property Line: 176

FOR COMMISSION USE ONLY
Status: Accepted
1124801

API NO. 35-151-24071
 OTC PROD.
 UNIT NO. 151-213420

PLEASE TYPE OR USE BLACK INK
 NOTE:
 Attach copy of original 1002A if recom



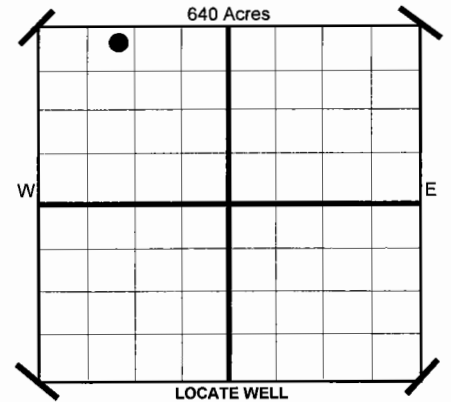
MISSION RECEIVED 657509 Form 1002A Rev. 2009

JUN 10 2014

OKLAHOMA CORPORATION COMMISSION

ORIGINAL AMENDED
 Reason Amended
 TYPE OF DRILLING OPERATION
 STRAIGHT HOLE DIRECTIONAL HOLE HORIZONTAL HOLE

COMPLETION REPORT
 SPUD DATE 3/14/2014
 DRLG FINISHED DATE 3/28/2014
 DATE OF WELL COMPLETION 4/24/2014
 1ST PROD DATE 5/13/2014
 RECOMP DATE
 WELL NO 1H
 FWL OF 1/4 SEC 1,275
 Longitude (if Known)
 OPERATOR NAME CHESAPEAKE OPERATING, INC. OTC/OCC OPERATOR NO. 17441
 ADDRESS P.O. BOX 18496
 CITY OKLAHOMA CITY STATE OK ZIP 73154



County WOODS SEC 3 TWP 27N RGE 17W
 LEASE NAME OAKLEY CASH 3-27-17
 SHL NE 1/4 NE 1/4 NW 1/4 NW 1/4
 ELEVATION Derrick Fl 1,833 Ground 1,818
 OPERATOR NAME CHESAPEAKE OPERATING, INC. OTC/OCC OPERATOR NO. 17441
 ADDRESS P.O. BOX 18496
 CITY OKLAHOMA CITY STATE OK ZIP 73154

COMPLETION TYPE
 SINGLE ZONE
 MULTIPLE ZONE
 COMMINGLED
 LOCATION EXCEPTION ORDER NO. 622767 (INTERIM)
 INCREASED DENSITY ORDER NO. N/A

CASING & CEMENT (Form 1002C must be attached)

TYPE	SIZE	WEIGHT	GRADE	FEET	PSI	SAX	TOP	
CONDUCTOR								
SURFACE	9 5/8"	36#	J-55	990		385	SURFACE	
INTERMEDIATE I	7"	26#	P-110EC	5,965		220	4,830	
INTERMEDIATE II								
LINER	4 1/2"	11.60#	HCP-110	5,766-10,320		520	5,766	
							TOTAL DEPTH	10,320

PACKER @ 5,718 BRAND & TYPE AS-3 PLUG @ TYPE PLUG @ TYPE
 PACKER @ BRAND & TYPE PLUG @ TYPE PLUG @ TYPE

COMPLETION & TEST DATA BY PRODUCING FORMATION

359MESP

FORMATION	SPACING & SPACING ORDER NUMBER	CLASS: Oil, Gas, Dry, Inj. Disp, Comm Disp, Svc	PERFORATED INTERVALS	ACID/VOLUME	FRACTURE TREATMENT (Fluids/Prop Amounts)
MISSISSIPPIAN	640 622128	Oil	5,850-10,190	HCL Acid 14,500 GAL Frac Fluid	44,082 BBLS Proppant 466,040 LBS

Monitor Report to Frac Focus

Minimum Gas Allowable (165:10-17-7) Gas Purchaser/Measurer Chesapeake Operating, Inc.
 OR 1st Sales Date 5/14/2014
 Oil Allowable (165:10-13-3)

INITIAL TEST DATA

INITIAL TEST DATE	6/1/2014
OIL-BBL/DAY	173
OIL-GRAVITY (API)	
GAS-MCF/DAY	388
GAS-OIL RATIO CU FT/BBL	2,243
WATER-BBL/DAY	1,896
PUMPING OR FLOWING	Artificial Lift
INITIAL SHUT-IN PRESSURE	
CHOKE SIZE	
FLOW TUBING PRESSURE	114

A record of the formations drilled through, and pertinent remarks are presented on the reverse. I declare that I have knowledge of the contents of this report and am authorized by my organization to make this report, which was prepared by me or under my supervision and direction, with the data and facts stated herein to be true, correct, and complete to the best of my knowledge and belief.

SIGNATURE: *[Signature]* - MANAGER REGULATORY OPERATIONS 6/9/2014 405-848-8000
 NAME (PRINT OR TYPE) DATE PHONE NUMBER
 ADDRESS: P.O. BOX 18496 OKLAHOMA CITY OK 73154 dawn.richardson@chk.com
 CITY STATE ZIP EMAIL ADDRESS

PLEASE TYPE OR USE BLACK INK ONLY
FORMATION RECORD

Give formation names and tops, if available, or descriptions and thickness of formations drilled through. Show intervals cored or drillstem tested.

LEASE NAME OAKLEY CASH 3-27-17

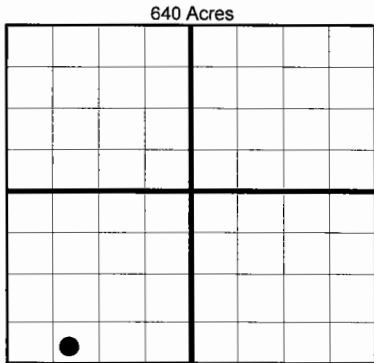
WELL NO. 1H

NAMES OF FORMATIONS	TOP
MISSISSIPPIAN	5,799

FOR COMMISSION USE ONLY	
ITD on file	<input type="checkbox"/> YES <input type="checkbox"/> NO
APPROVED	DISAPPROVED
2) Reject Codes	

Were open hole logs run?	yes	<input checked="" type="checkbox"/>	no
Date Last log was run	N/A		
Was CO ₂ encountered?	yes	<input checked="" type="checkbox"/>	no at what depths?
Was H ₂ S encountered?	yes	<input checked="" type="checkbox"/>	no at what depths?
Were unusual drilling circumstances encountered?	yes	<input checked="" type="checkbox"/>	no
If yes, briefly explain.			

Other remarks:



BOTTOM HOLE LOCATION FOR DIRECTIONAL HOLE

SEC	TWP	RGE	COUNTY			
Spot Location				Feet From 1/4 Sec Lines	FSL	FWL
1/4	1/4	1/4	1/4			
Measured Total Depth		True Vertical Depth		BHL From Lease, Unit, or Property Line:		

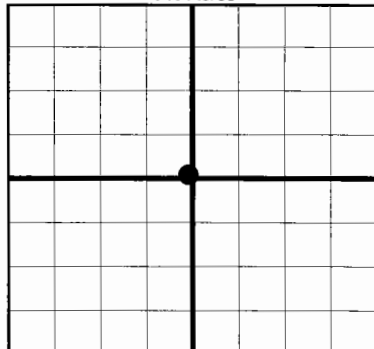
BOTTOM HOLE LOCATION FOR HORIZONTAL HOLE: (LATERALS)

SEC	TWP	RGE	COUNTY			
3	27N	17W	WOODS			
Spot Location				Feet From 1/4 Sec Lines	FSL	FWL
SW 1/4	SE 1/4	SW 1/4	SW 1/4	176	755	
Depth of Deviation		Radius of Turn		Direction	Total Length	
5,232		483		184	4,521	
Measured Total Depth		True Vertical Depth		BHL From Lease, Unit, or Property Line:		
10,320		5,715		176		

If more than three drainholes are proposed, attach a separate sheet indicating the necessary information.

Direction must be stated in degrees azimuth. Please note, the horizontal drainhole and its end point must be located within the boundaries of the lease or spacing unit.

Directional surveys are required for all drainholes and directional wells.
640 Acres



LATERAL #2

SEC	TWP	RGE	COUNTY			
Spot Location				Feet From 1/4 Sec Lines	FSL	FWL
1/4	1/4	1/4	1/4			
Depth of Deviation		Radius of Turn		Direction	Total Length	
Measured Total Depth		True Vertical Depth		BHL From Lease, Unit, or Property Line:		

LATERAL #3

SEC	TWP	RGE	COUNTY			
Spot Location				Feet From 1/4 Sec Lines	FSL	FWL
1/4	1/4	1/4	1/4			
Depth of Deviation		Radius of Turn		Direction	Total Length	
Measured Total Depth		True Vertical Depth		BHL From Lease, Unit, or Property Line:		

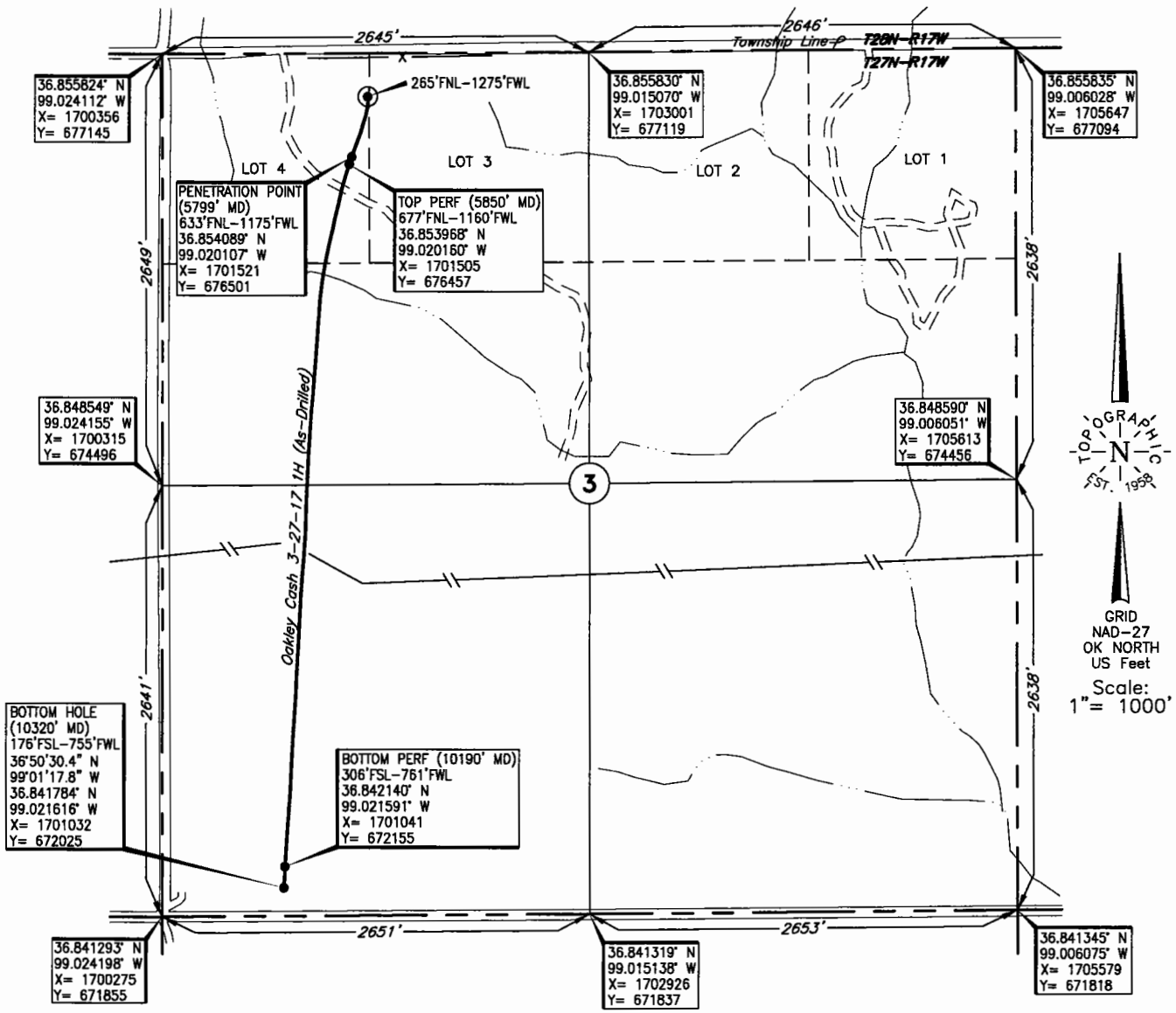
TOPOGRAPHIC LAND SURVEYORS OF OKLAHOMA

6709 NORTH CLASSEN BLVD., OKLA. CITY, OKLA. 73116 * LOCAL (405) 843-4847 * OUT OF STATE (800) 654-3219
 Certificate of Authorization No. 1293.

WOODS

County, Oklahoma

265'FNL-1275'FWL Section 3 Township 27N Range 17W I.M.



Operator: CHESAPEAKE OPERATING, INC.

Lease Name: OAKLEY CASH 3-27-17 Well No.: 1H **ELEVATION:** 1818' Gr. at Level Pad

Topography & Vegetation Loc. fell at Level Pad, ±190' South of E-W salt water line

Good Drill Site? Yes Reference Stakes or Alternate Location Stakes Set None

Best Accessibility to Location From North off county road

Distance & Direction From Hwy Jct or Town From Camp Houston, OK, go ±4 miles East on US. Hwy. 64, then ±3.25 miles North, then ±1 mile East to the NW Cor. of Sec. 3-T27N-R17W

This information was gathered with a GPS receiver with ±1 foot Horiz./Vert. accuracy

DATUM: NAD-27
 LAT: 36°51'18.4"N
 LONG: 99°01'11.1"W
 LAT: 36.855100° N
 LONG: 99.019759° W
 STATE PLANE
 COORDINATES: (US Feet)
 ZONE: OK NORTH
 X: 1701627
 Y: 676868

221750 Date of Drawing: April 30, 2014
 Invoice # 215495 Date Staked: Feb. 13, 2014 JP

FINAL AS-DRILLED PLAT

AS-DRILLED INFORMATION
 FURNISHED BY CHESAPEAKE OPERATING