

Oklahoma Corporation Commission
Oil & Gas Conservation Division
Post Office Box 52000
Oklahoma City, Oklahoma 73152-2000
Rule 165: 10-3-25

Form 1002A

API No.: 35003228290000

Completion Report

Spud Date: January 28, 2014

OTC Prod. Unit No.: 003-213115

Drilling Finished Date: February 16, 2014

1st Prod Date: April 11, 2014

Completion Date: March 23, 2014

Drill Type: HORIZONTAL HOLE

Min Gas Allowable: Yes

Well Name: RICE 15-27-12 1H

Purchaser/Measurer: CHESAPEAKE OPERATING INC

Location: ALFALFA 15 27N 12W
NE SE SW SW
390 FSL 1165 FWL of 1/4 SEC
Derrick Elevation: 1255 Ground Elevation: 1233

First Sales Date: 04/11/2014

Operator: CHESAPEAKE OPERATING INC 17441
PO BOX 18496
6100 N WESTERN AVE
OKLAHOMA CITY, OK 73154-0496

Completion Type	
X	Single Zone
	Multiple Zone
	Commingled

Location Exception
Order No
620470

Increased Density
Order No
620469

Casing and Cement							
Type	Size	Weight	Grade	Feet	PSI	SAX	Top of CMT
SURFACE	13 3/8	48	H-40	422		300	SURFACE
INTERMEDIATE	9 5/8	36	J-55	1200		360	SURFACE
PRODUCTION	7	26	P-110EC	5686		340	4240

Liner								
Type	Size	Weight	Grade	Length	PSI	SAX	Top Depth	Bottom Depth
LINER	4 1/2	11.60	P-110	5545	0	775	5165	10710

Total Depth: 10710

Packer	
Depth	Brand & Type
5124	AS-3

Plug	
Depth	Plug Type
There are no Plug records to display.	

Initial Test Data										
Test Date	Formation	Oil BBL/Day	Oil-Gravity (API)	Gas MCF/Day	Gas-Oil Ratio Cu FT/BBL	Water BBL/Day	Pumpin or Flowing	Initial Shut-In Pressure	Choke Size	Flow Tubing Pressure
Apr 26, 2014	MISS'AN LM	449		1687	3757	1890	ARTIFICIA			129

Completion and Test Data by Producing Formation										
Formation Name: MISS'AN LM			Code: 359MPLM			Class: OIL				
Spacing Orders					Perforated Intervals					
Order No		Unit Size			From			To		
106740		640			5480			10579		
Acid Volumes					Fracture Treatments					
16,000 GALLONS HCL ACID					49,748 BARRELS FRAC FLUID, 451,800 POUNDS PROPPANT					

Formation	Top
MISSISSIPPI LIME	5394

Were open hole logs run? No

Date last log run:

Were unusual drilling circumstances encountered? No

Explanation:

Other Remarks
OCC: FLE ORDER HAS NOT BEEN ISSUED. WE HAVE ACCEPTED OPERATORS DATA AS SUBMITTED. IRREGULAR SECTION.

Lateral Holes
Sec: 15 TWP: 27N RGE: 12W County: ALFALFA
NW NW NW NE
166 FNL 2531 FEL of 1/4 SEC
Depth of Deviation: 4985 Radius of Turn: 346 Direction: 357 Total Length: 5316
Measured Total Depth: 10710 True Vertical Depth: 5331 End Pt. Location From Release, Unit or Property Line: 166

FOR COMMISSION USE ONLY
Status: Accepted
1124361

API NO. 35-003-22829
 OTC PROD.
 UNIT NO. 003-213115

PLEASE TYPE OR USE BLACK INK ONLY
 NOTE: Attach copy of original 1002A if recompletion or re-



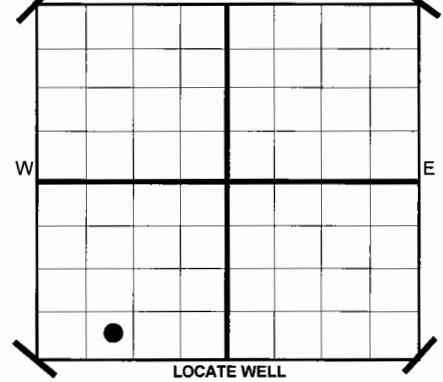
RECEIVED
 MAY 07 2014

ORIGINAL
 AMENDED
 Reason Amended
 TYPE OF DRILLING OPERATION
 STRAIGHT HOLE DIRECTIONAL HOLE HORIZONTAL HOLE
 SERVICE WELL

COMPLETION REPORT

SPUD DATE 1/28/2014
 DRLG FINISHED DATE 2/16/2014
 DATE OF WELL COMPLETION 3/23/2014
 1ST PROD DATE 4/11/2014
 RECOMP DATE
 Longitude (if Known)
 OTC/OCC OPERATOR NO. 17441

OKLAHOMA CORPORATION COMMISSION
 640 Acres



COUNTY ALFALFA SEC 15 TWP 27N RGE 12W
 LEASE NAME RICE 15-27-12 WELL NO 1H
 SHL NE 1/4 SE 1/4 SW 1/4 SW 1/4 FSL 390 FWL OF 1/4 SEC 1,165
 ELEVATION Latitude (if Known)
 Derrick Fl 1,255 Ground 1,233
 OPERATOR NAME CHESAPEAKE OPERATING, INC.
 ADDRESS P.O. BOX 18496
 CITY OKLAHOMA CITY STATE OK ZIP 73154

COMPLETION TYPE

SINGLE ZONE
 MULTIPLE ZONE Application Date
 COMMINGLED Application Date
 LOCATION EXCEPTION ORDER NO. 620470 (INTERIM)
 INCREASED DENSITY ORDER NO. 620469

CASING & CEMENT (Form 1002C must be attached)

TYPE	SIZE	WEIGHT	GRADE	FEET	PSI	SAX	TOP	
CONDUCTOR								
SURFACE	13 3/8"	48#	H-40	422		300	SURFACE	
INTERMEDIATE I	9 5/8"	36#	J-55	1,200		360	SURFACE	
INTERMEDIATE II Productions	7"	26#	P-110EC	5,686		340	4,240	
LINER	4 1/2"	11.60#	P-110	5,165-10,710		775	5,165	
							TOTAL DEPTH	10,710

PACKER @ 5.124 BRAND & TYPE AS-3 PLUG @ TYPE PLUG @ TYPE
 PACKER @ BRAND & TYPE PLUG @ TYPE PLUG @ TYPE

COMPLETION & TEST DATA BY PRODUCING FORMATION

FORMATION	SPACING & SPACING ORDER NUMBER	CLASS: Oil, Gas, Dry, Inj. Disp, Comm Disp, Svc	PERFORATED INTERVALS	ACID/VOLUME	FRACTURE TREATMENT (Fluids/Prop Amounts)
MISS'AN LM	640 106740	Oil	5,480-10,579	HCL Acid 16,000 GAL Frac Fluid 49,748 BBLS Proppant 451,800 LBS	

Monitor Report to Frac Focus

Minimum Gas Allowable (165:10-17-7) Gas Purchaser/Measurer Chesapeake Operating, Inc.
 OR 1st Sales Date 4/11/2014
 Oil Allowable (165:10-13-3)

INITIAL TEST DATA

INITIAL TEST DATE	4/26/2014
OIL-BBL/DAY	449
OIL-GRAVITY (API)	
GAS-MCF/DAY	1,687
GAS-OIL RATIO CU FT/BBL	3,757
WATER-BBL/DAY	1,890
PUMPING OR FLOWING	Artificial Lift
INITIAL SHUT-IN PRESSURE	
CHOKE SIZE	
FLOW TUBING PRESSURE	129

A record of the formations drilled through, and pertinent remarks are presented on the reverse. I declare that I have knowledge of the contents of this report and am authorized by my organization to make this report, which was prepared by me or under my supervision and direction, with the data and facts stated herein to be true, correct, and complete to the best of my knowledge and belief.

SIGNATURE: *[Signature]* - OPERATIONS MANAGER 5/6/2014 405-848-8000
 NAME (PRINT OR TYPE) DATE PHONE NUMBER
 P.O. BOX 18496 OKLAHOMA CITY OK 73154 dawn.richardson@chk.com
 ADDRESS CITY STATE ZIP EMAIL ADDRESS

PLEASE TYPE OR USE BLACK INK ONLY
FORMATION RECORD

Give formation names and tops, if available, or descriptions and thickness of formations drilled through. Show intervals cored or drillstem tested.

LEASE NAME RICE 15-27-12

WELL NO. 1H

NAMES OF FORMATIONS	TOP
MISSISSIPPI LIME	5,394

FOR COMMISSION USE ONLY

ITD on file YES NO

APPROVED _____ DISAPPROVED _____

2) Reject Codes

Were open hole logs run? yes no

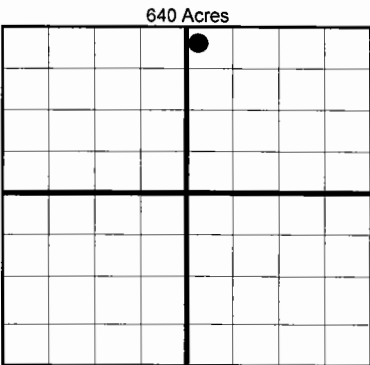
Date Last log was run N/A

Was CO₂ encountered? yes no at what depths?

Was H₂S encountered? yes no at what depths?

Were unusual drilling circumstances encountered? yes no
If yes, briefly explain.

Other remarks:



BOTTOM HOLE LOCATION FOR DIRECTIONAL HOLE

SEC	TWP	RGE	COUNTY			
Spot Location	1/4	1/4	1/4	Feet From 1/4 Sec Lines	FSL	FWL
Measured Total Depth	True Vertical Depth		BHL From Lease, Unit, or Property Line:			

BOTTOM HOLE LOCATION FOR HORIZONTAL HOLE: (LATERALS)

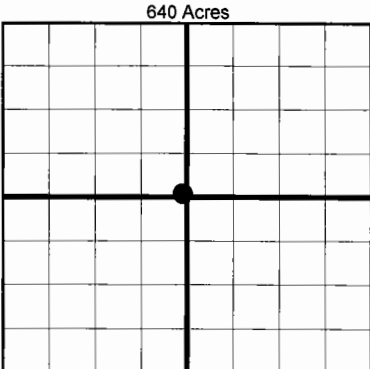
LATERAL #1

SEC	TWP	RGE	COUNTY				
15	27N	12W	ALFALFA				
Spot Location	NW 1/4	NW 1/4	NE 1/4	Feet From 1/4 Sec Lines	FNL 166	FEL 2,531	
Depth of Deviation	4,985	Radius of Turn	346	Direction	357	Total Length	5,316
Measured Total Depth	True Vertical Depth		BHL From Lease, Unit, or Property Line:				
10,710	5,331		166				

If more than three drainholes are proposed, attach a separate sheet indicating the necessary information.

Direction must be stated in degrees azimuth. Please note, the horizontal drainhole and its end point must be located within the boundaries of the lease or spacing unit.

Directional surveys are required for all drainholes and directional wells.



LATERAL #2

SEC	TWP	RGE	COUNTY				
Spot Location	1/4	1/4	1/4	Feet From 1/4 Sec Lines	FSL	FWL	
Depth of Deviation	Radius of Turn		Direction				Total Length
Measured Total Depth	True Vertical Depth		BHL From Lease, Unit, or Property Line:				

LATERAL #3

SEC	TWP	RGE	COUNTY				
Spot Location	1/4	1/4	1/4	Feet From 1/4 Sec Lines	FSL	FWL	
Depth of Deviation	Radius of Turn		Direction				Total Length
Measured Total Depth	True Vertical Depth		BHL From Lease, Unit, or Property Line:				

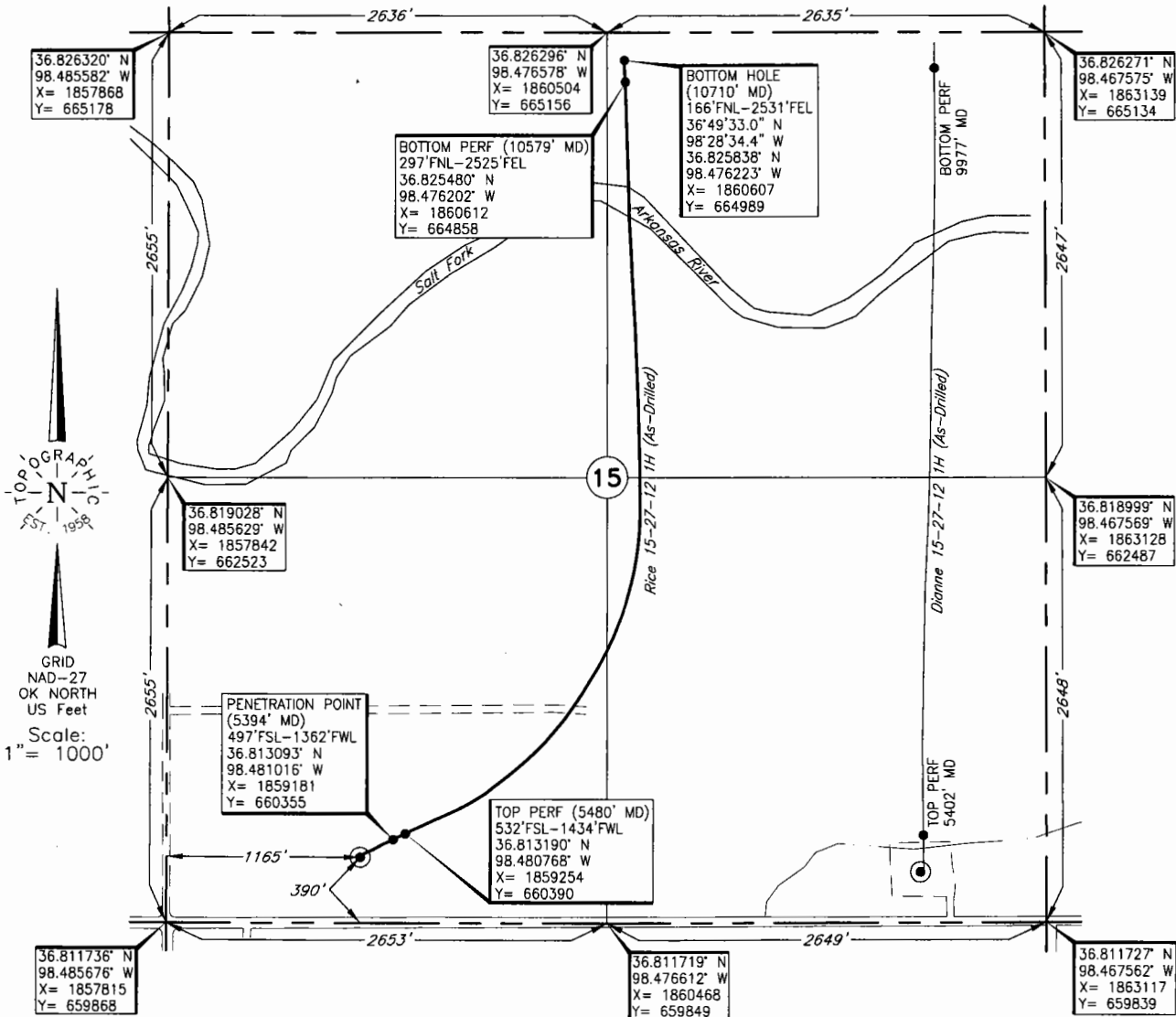
TOPOGRAPHIC LAND SURVEYORS OF OKLAHOMA

6709 NORTH CLASSEN BLVD., OKLA. CITY, OKLA. 73116 * LOCAL (405) 843-4847 * OUT OF STATE (800) 654-3219
 Certificate of Authorization No. 1293.

ALFALFA

County, Oklahoma

390'FSL - 1165'FWL Section 15 Township 27N Range 12W I.M.



Operator: CHESAPEAKE OPERATING, INC.

Lease Name: RICE 15-27-12

Well No.: 1H

ELEVATION:

1233' Gr. at Pad

Topography & Vegetation Loc. fell on Level Pad

Good Drill Site? Yes

Reference Stakes or Alternate Location
 Stakes Set None

Best Accessibility to Location From West off lease road

Distance & Direction

from Hwy Jct or Town From Ingersoll, OK, go ±5.0 mi. West, then ±1.0 mi. North to

the SW Cor. of Sec. 15-T27N-R12W

This information was gathered with a GPS receiver with ±1 foot Horiz./Vert. accuracy

DATUM: NAD-27
 LAT: 36°48'46.1"N
 LONG: 98°28'54.1"W
 LAT: 36.812801° N
 LONG: 98.481689° W
 STATE PLANE
 COORDINATES: (US Feet)
 ZONE: OK NORTH
 X: 1858984
 Y: 660250

219589 Date of Drawing: Mar. 27, 2014
 Invoice # 213449 Date Staked: Dec. 23, 2013 JP

FINAL AS-DRILLED PLAT

AS-DRILLED INFORMATION
 FURNISHED BY CHESAPEAKE OPERATING