

Oklahoma Corporation Commission  
Oil & Gas Conservation Division  
Post Office Box 52000  
Oklahoma City, Oklahoma 73152-2000  
Rule 165: 10-3-25

Form 1002A

API No.: 35003228430000

**Completion Report**

Spud Date: February 17, 2014

OTC Prod. Unit No.: 003-213116

Drilling Finished Date: March 07, 2014

1st Prod Date: April 11, 2014

Completion Date: March 22, 2014

**Drill Type: HORIZONTAL HOLE**

Min Gas Allowable: Yes

Well Name: RICE 15-27-12 2H

Purchaser/Measurer: CHESAPEAKE OPERATING INC

Location: ALFALFA 15 27N 12W  
NE SE SW SW  
390 FSL 1145 FWL of 1/4 SEC  
Derrick Elevation: 1255 Ground Elevation: 1233

First Sales Date: 04/11/2014

Operator: CHESAPEAKE OPERATING INC 17441  
PO BOX 18496  
6100 N WESTERN AVE  
OKLAHOMA CITY, OK 73154-0496

Completion Type	
X	Single Zone
	Multiple Zone
	Commingled

Location Exception
Order No
620471

Increased Density
Order No
620469

Casing and Cement							
Type	Size	Weight	Grade	Feet	PSI	SAX	Top of CMT
SURFACE	13 3/8	48	H-40	400		500	SURFACE
INTERMEDIATE	9 5/8	36	J-55	1204		360	SURFACE
PRODUCTION	7	26	P-110HC	5756		340	2732

Liner								
Type	Size	Weight	Grade	Length	PSI	SAX	Top Depth	Bottom Depth
LINER	4 1/2	11.60	P-110EC	4446	0	470	5305	9751

**Total Depth: 9776**

Packer	
Depth	Brand & Type
5249	AS-3

Plug	
Depth	Plug Type
There are no Plug records to display.	

Initial Test Data										
Test Date	Formation	Oil BBL/Day	Oil-Gravity (API)	Gas MCF/Day	Gas-Oil Ratio Cu FT/BBL	Water BBL/Day	Pumpin or Flowing	Initial Shut-In Pressure	Choke Size	Flow Tubing Pressure
Apr 26, 2014	MISS'AN LM	673		1318	1958	1467	ARTIFICIA			168

Completion and Test Data by Producing Formation										
Formation Name: MISS'AN LM			Code: 359MPLM			Class: OIL				
<b>Spacing Orders</b>				<b>Perforated Intervals</b>						
<b>Order No</b>	<b>Unit Size</b>			<b>From</b>	<b>To</b>					
106740	640			5490	9690					
110308	640									
546036	640									
<b>Acid Volumes</b>				<b>Fracture Treatments</b>						
13,000 GALLONS HCL ACID				42,036 BARRELS FRAC FLUID, 402,620 POUNDS PROPPANT						

Formation	Top
MISSISSIPPIAN LIME	5394

Were open hole logs run? No  
Date last log run:

Were unusual drilling circumstances encountered? No  
Explanation:

Other Remarks
OCC: FLE ORDER HAS NOT BEEN ISSUED. WE HAVE ACCEPTED OPERATORS DATA AS SUBMITTED. IRREGULAR SECTION.

Lateral Holes
Sec: 15 TWP: 27N RGE: 12W County: ALFALFA NE NE NW NW 234 FNL 1028 FWL of 1/4 SEC Depth of Deviation: 4968 Radius of Turn: 361 Direction: 358 Total Length: 4382 Measured Total Depth: 9776 True Vertical Depth: 5329 End Pt. Location From Release, Unit or Property Line: 234

FOR COMMISSION USE ONLY
Status: Accepted
1124363

API No. 35-003-22843  
 OTC PROD. UNIT NO. 003-213116

PLEASE TYPE OR USE BLACK INK ONLY  
 NOTE: Attach copy of original 1002A if recompletion or re-



RECEIVED 651093 002A Rev. 2009

MAY 07 2014

OKLAHOMA CORPORATION COMMISSION

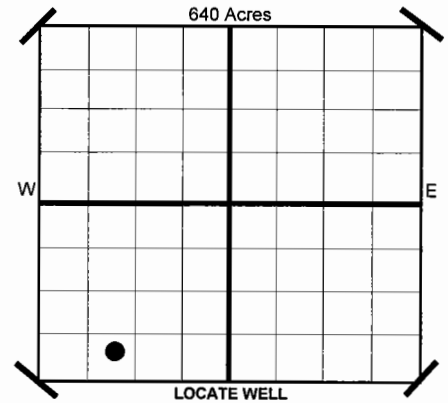
ORIGINAL AMENDED  
 Reason Amended

COMPLETION REPORT

TYPE OF DRILLING OPERATION  
 STRAIGHT HOLE  DIRECTIONAL HOLE  HORIZONTAL HOLE

If directional or horizontal, see reverse for bottom hole location.

COUNTY	ALFALFA	SEC	15	TWP	27N	RGE	12W	SPUD DATE	2/17/2014	
LEASE NAME	RICE 15-27-12			WELL NO	2H			DRLG FINISHED DATE	3/7/2014	
SHL	NE 1/4 SE 1/4 SW 1/4 SW 1/4	FSL	390	FWL OF 1/4 SEC	1,145			DATE OF WELL COMPLETION	3/22/2014	
ELEVATION	Derrick Fl 1,255 Ground 1,233			Latitude (if Known)				1ST PROD DATE	4/11/2014	
OPERATOR NAME	CHESAPEAKE OPERATING, INC.				OTC/OCC OPERATOR NO.	17441			RECOMP DATE	
ADDRESS	P.O. BOX 18496									
CITY	OKLAHOMA CITY	STATE	OK	ZIP	73154					



COMPLETION TYPE

SINGLE ZONE  
 MULTIPLE ZONE  
 COMMINGLED  
 LOCATION EXCEPTION ORDER NO. 620471 (INTERIM)  
 INCREASED DENSITY ORDER NO. 620469

CASING & CEMENT (Form 1002C must be attached)

TYPE	SIZE	WEIGHT	GRADE	FEET	PSI	SAX	TOP
CONDUCTOR							
SURFACE	13 3/8"	48#	H-40	400		500	SURFACE
INTERMEDIATE I	9 5/8"	36#	J-55	1,204		360	SURFACE
INTERMEDIATE II	7"	26#	P-110HC	5,756		340	2,732
LINER	4 1/2"	11.60#	P-110EC	5,305-9,751		470	5,370

PACKER @ 5.249 BRAND & TYPE AS-3 PLUG @ TYPE PLUG @ TYPE TOTAL DEPTH 9,776

COMPLETION & TEST DATA BY PRODUCING FORMATION

FORMATION	MISSISSIPPIAN LIME						
SPACING & SPACING ORDER NUMBER	640 106740						
CLASS: Oil, Gas, Dry, Inj. Disp, Comm Disp, Svc	Oil						
PERFORATED INTERVALS	5,490-9,690						
ACID/VOLUME	HCL Acid 13,000 GAL						
FRACTURE TREATMENT (Fluids/Prop Amounts)	Frac Fluid 42,036 BBLS Proppant 402,620 LBS						

Monitor Report to Frac Focus

Minimum Gas Allowable (165:10-17-7) Gas Purchaser/Measurer Chesapeake Operating, Inc.  
 OR  
 Oil Allowable (165:10-13-3) 1st Sales Date 4/11/2014

INITIAL TEST DATA

INITIAL TEST DATE	4/26/2014				
OIL-BBL/DAY	673				
OIL-GRAVITY ( API)					
GAS-MCF/DAY	1,318				
GAS-OIL RATIO CU FT/BBL	1,958				
WATER-BBL/DAY	1,467				
PUMPING OR FLOWING	Artificial Lift				
INITIAL SHUT-IN PRESSURE					
CHOKE SIZE					
FLOW TUBING PRESSURE	168				

A record of the formations drilled through, and pertinent remarks are presented on the reverse. I declare that I have knowledge of the contents of this report and am authorized by my organization to make this report, which was prepared by me or under my supervision and direction, with the data and facts stated herein to be true, correct, and complete to the best of my knowledge and belief.

*[Signature]* - OPERATIONS MANAGER 5/6/2014 405-848-8000  
 NAME (PRINT OR TYPE) DATE PHONE NUMBER  
 P.O. BOX 18496 OKLAHOMA CITY OK 73154 dawn.richardson@chk.com  
 ADDRESS CITY STATE ZIP EMAIL ADDRESS

**PLEASE TYPE OR USE BLACK INK ONLY**  
FORMATION RECORD

Give formation names and tops, if available, or descriptions and thickness of formations drilled through. Show intervals cored or drillstem tested.

LEASE NAME RICE 15-27-12

WELL NO. 2H

NAMES OF FORMATIONS	TOP
MISSISSIPPIAN LIME	5,394

FOR COMMISSION USE ONLY	
ITD on file	<input type="checkbox"/> YES <input type="checkbox"/> NO
APPROVED	DISAPPROVED
2) Reject Codes	
_____	
_____	
_____	
_____	

Were open hole logs run?	yes	<input checked="" type="checkbox"/>	no
Date last log was run	N/A		
Was CO <sub>2</sub> encountered?	yes	<input checked="" type="checkbox"/>	no at what depths?
Was H <sub>2</sub> S encountered?	yes	<input checked="" type="checkbox"/>	no at what depths?
Were unusual drilling circumstances encountered?	yes	<input checked="" type="checkbox"/>	no
If yes, briefly explain.			

Other remarks:

---



---



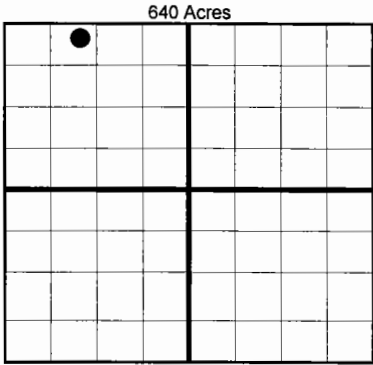
---



---



---



**BOTTOM HOLE LOCATION FOR DIRECTIONAL HOLE**

SEC	TWP	RGE	COUNTY			
Spot Location	1/4	1/4	1/4	Feet From 1/4 Sec Lines	FSL	FWL
Measured Total Depth	True Vertical Depth		BHL From Lease, Unit, or Property Line:			

**BOTTOM HOLE LOCATION FOR HORIZONTAL HOLE: (LATERALS)**

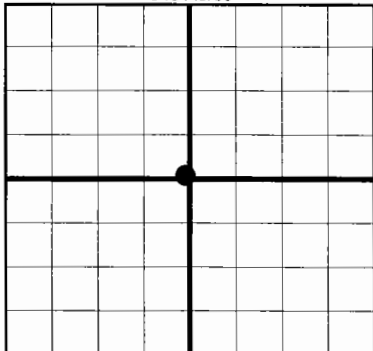
**LATERAL #1**

SEC	TWP	RGE	COUNTY				
15	27N	12W	ALFALFA				
Spot Location	NE 1/4	NE 1/4	NW 1/4	NW 1/4	Feet From 1/4 Sec Lines	FNL 234	FWL 1,028
Depth of Deviation	4,968		Radius of Turn	361	Direction	358	Total Length
Measured Total Depth	9,776		True Vertical Depth	5,329		BHL From Lease, Unit, or Property Line: 234	

If more than three drainholes are proposed, attach a separate sheet indicating the necessary information.

Direction must be stated in degrees azimuth. Please note, the horizontal drainhole and its end point must be located within the boundaries of the lease or spacing unit.

**Directional surveys are required for all drainholes and directional wells.**  
640 Acres



**LATERAL #2**

SEC	TWP	RGE	COUNTY				
Spot Location	1/4	1/4	1/4	1/4	Feet From 1/4 Sec Lines	FSL	FWL
Depth of Deviation	Radius of Turn		Direction		Total Length		
Measured Total Depth	True Vertical Depth		BHL From Lease, Unit, or Property Line:				

**LATERAL #3**

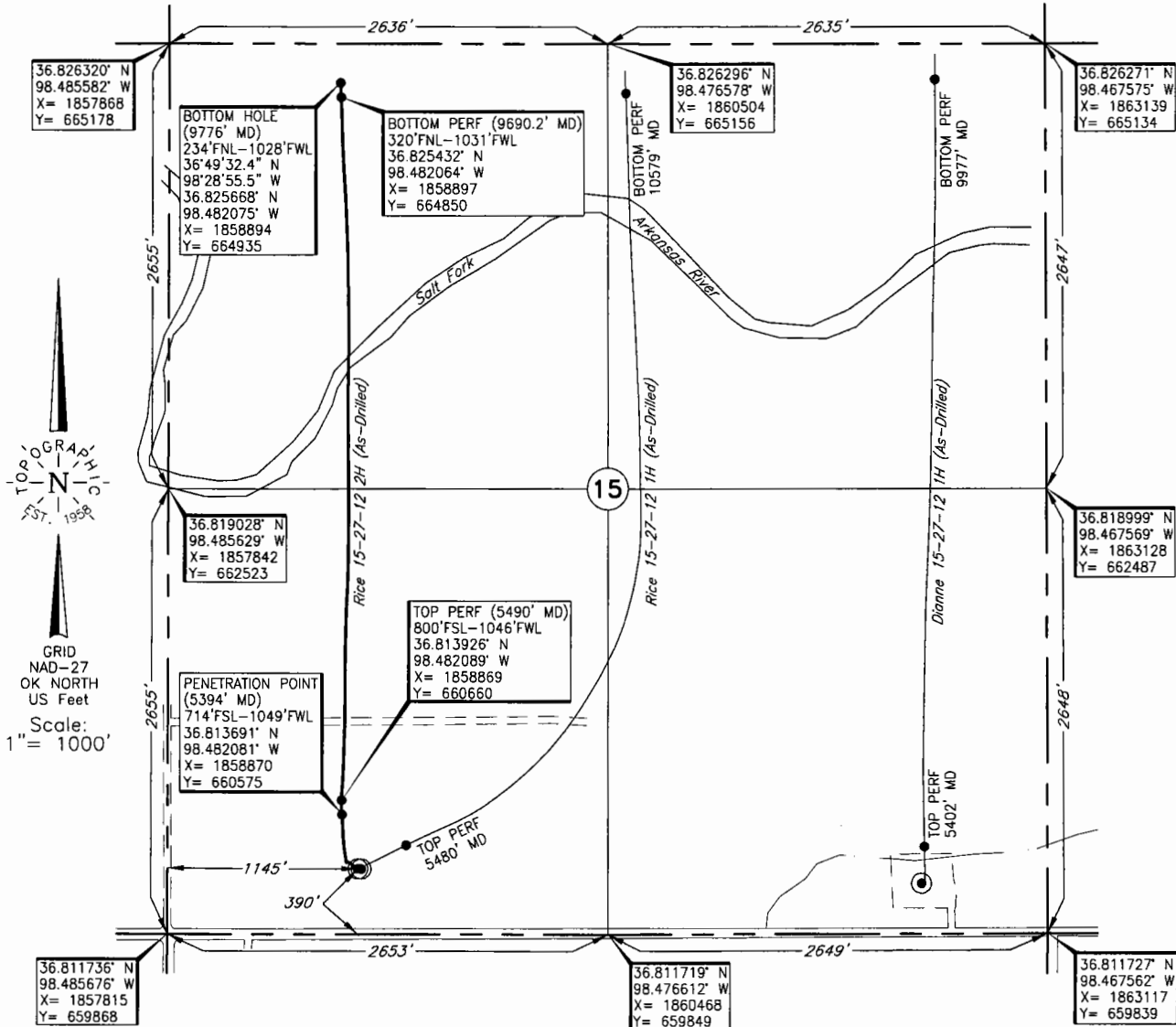
SEC	TWP	RGE	COUNTY				
Spot Location	1/4	1/4	1/4	1/4	Feet From 1/4 Sec Lines	FSL	FWL
Depth of Deviation	Radius of Turn		Direction		Total Length		
Measured Total Depth	True Vertical Depth		BHL From Lease, Unit, or Property Line:				

**TOPOGRAPHIC LAND SURVEYORS OF OKLAHOMA**

6709 NORTH CLASSEN BLVD., OKLA. CITY, OKLA. 73116 \* LOCAL (405) 843-4847 \* OUT OF STATE (800) 654-3219  
 Certificate of Authorization No. 1293.

ALFALFA County, Oklahoma

390'FSL - 1145'FWL Section 15 Township 27N Range 12W I.M.



Operator: CHESAPEAKE OPERATING, INC.

Lease Name: RICE 15-27-12

Well No.: 2H

**ELEVATION:**  
1233' Gr. at Pad

Topography & Vegetation Loc. fell at Level Pad

Good Drill Site? Yes Reference Stakes or Alternate Location  
 Stakes Set None

Best Accessibility to Location From West off lease road

Distance & Direction  
 from Hwy Jct or Town From Ingersoll, OK, go ±5.0 mi. West, then ±1.0 mi. North to  
 the SW Cor. of Sec. 15-T27N-R12W

DATUM: NAD-27  
 LAT: 36°48'46.1" N  
 LONG: 98°28'54.3" W  
 LAT: 36.812801° N  
 LONG: 98.481757° W  
 STATE PLANE  
 COORDINATES: (US Feet)  
 ZONE: OK NORTH  
 X: 1858964  
 Y: 660250

219622 Date of Drawing: Mar. 31, 2014  
 Invoice # 213449A Date Staked: Dec. 23, 2013 JP

**FINAL AS-DRILLED PLAT**

AS-DRILLED INFORMATION  
 FURNISHED BY CHESAPEAKE OPERATING

This information was gathered with a GPS receiver with ±1 foot Horiz./Vert. accuracy