

Oklahoma Corporation Commission
Oil & Gas Conservation Division
Post Office Box 52000
Oklahoma City, Oklahoma 73152-2000
Rule 165: 10-3-25

Form 1002A

API No.: 35103200960002

Completion Report

Spud Date: February 13, 2014

OTC Prod. Unit No.: 103-024350

Drilling Finished Date: March 28, 2014

Amended

1st Prod Date:

Amend Reason: DEEPEN

Completion Date: April 08, 2014

Drill Type: STRAIGHT HOLE

Well Name: CHARLES WEBER 5

Purchaser/Measurer:

Location: NOBLE 20 20N 2W
S2 N2 NE SW
2080 FSL 1980 FWL of 1/4 SEC
Derrick Elevation: 1224 Ground Elevation: 1215

First Sales Date:

Operator: BEREXCO LLC 22550

2020 N BRAMBLEWOOD ST
WICHITA, KS 67206-1094

Completion Type	
X	Single Zone
	Multiple Zone
	Commingled

Location Exception	
Order No	
There are no Location Exception records to display.	

Increased Density	
Order No	
There are no Increased Density records to display.	

Casing and Cement							
Type	Size	Weight	Grade	Feet	PSI	SAX	Top of CMT
SURFACE	8 5/8	28	H-40	369		250	SURFACE
PRODUCTION	5 1/2	14	255	5023		175	3800

Liner								
Type	Size	Weight	Grade	Length	PSI	SAX	Top Depth	Bottom Depth
LINER	4 1/2	11.6	J-55	40	0	0	5181	5221

Total Depth: 5221

Packer	
Depth	Brand & Type
There are no Packer records to display.	

Plug	
Depth	Plug Type
There are no Plug records to display.	

Initial Test Data										
Test Date	Formation	Oil BBL/Day	Oil-Gravity (API)	Gas MCF/Day	Gas-Oil Ratio Cu FT/BBL	Water BBL/Day	Pumpin or Flowing	Initial Shut-In Pressure	Choke Size	Flow Tubing Pressure
Apr 18, 2014	WILCOX	1.1	39			85	PUMPING			

Completion and Test Data by Producing Formation										
Formation Name: WILCOX			Code: 202WLCX			Class: OIL				
Spacing Orders				Perforated Intervals						
Order No	Unit Size			From			To			
57881	40			There are no Perf. Intervals records to display.						
Acid Volumes				Fracture Treatments						
500 GALLONS 15% NEFE + 25 GALLONS ACETIC				There are no Fracture Treatments records to display.						

Formation	Top
WILCOX	5036

Were open hole logs run? No
Date last log run: February 19, 2014

Were unusual drilling circumstances encountered? No
Explanation:

Other Remarks
DEEPENED WELL FROM 5,093' TO 5,221'. INSERTED 4 1/2" LINER SLOTTED FROM 5,181' TO 5,221'. THE WELL IS AN OPEN HOLE COMPLETION FROM 5,023' TO 5,221'.

FOR COMMISSION USE ONLY	
Status: Accepted	1124053

AS SUBMITTED

RECEIVED

Form 1002A
Rev. 2009**APR 23 2014****OKLAHOMA CORPORATION COMMISSION**API NO. 103 20096
OTC PROD. UNIT NO. 103-024350PLEASE TYPE OR USE BLACK INK
NOTE:

Attach copy of original 1002 if recompletion or reentry.

Oklahoma City, Oklahoma 73152-2000

Rule 165-10-3-25

 ORIGINAL
 AMENDED (Reason)Deepen

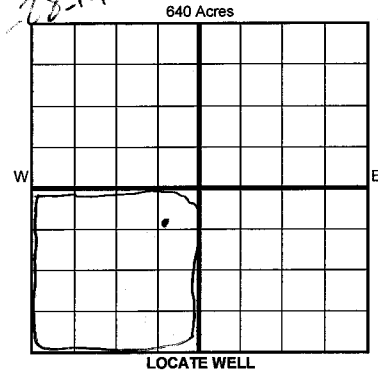
COMPLETION REPORT

TYPE OF DRILLING OPERATION

 STRAIGHT HOLE DIRECTIONAL HOLE HORIZONTAL HOLE
 SERVICE WELL

If directional or horizontal, see reverse for bottom hole location.

COUNTY <u>Noble</u>	SEC <u>20</u>	TWP <u>20N</u>	RGE <u>02W</u>	SPUD DATE <u>3/26/1968</u>
LEASE NAME <u>Charles Weber</u>	WELL NO. <u>5</u>	DATE OF WELL COMPLETION <u>7/18/1968</u>	DRLG FINISHED DATE <u>4/9/1968</u>	
<u>5/2 1/4 N1/2 1/4 NE 1/4 SW 1/4</u>	FSL OF 1/4 SEC <u>2080</u>	FWL OF 1/4 SEC <u>1980</u>	DATE OF WELL COMPLETION <u>7/18/1968</u>	
ELEVATION N Derrick <u>1224</u> Ground <u>1215</u>	Latitude (if known)	Longitude (if known)	1st PROD DATE <u>4/12/1968</u>	
OPERATOR NAME <u>Berexco LLC</u>	OTC/OCC OPERATOR NO. <u>22550</u>		RECOMP DATE <u>4/8/2014</u>	
ADDRESS <u>2020 N. Bramblewood</u>				
CITY <u>Wichita</u>	STATE <u>KS</u>	ZIP <u>67206</u>		

2-13-14
3-28-14

COMPLETION TYPE

<input checked="" type="checkbox"/> SINGLE ZONE
<input type="checkbox"/> MULTIPLE ZONE
Application Date
<input type="checkbox"/> COMMINGLED
Application Date
LOCATION
EXCEPTION ORDER
INCREASED DENSITY
ORDER NO.

CASING & CEMENT (Form 1002C must be attached)

	TYPE	SIZE	WEIGHT	GRADE	FEET	PSI	SAX	TOP OF CMT
CONDUCTOR								
SURFACE		8 5/8	28	H90	369		250	Surface
INTERMEDIATE								
PRODUCTION		5 1/2	14	A55	5023		175	3800'
LINER		4 1/2	11.6	A55	5002-5224		None	
								TOTAL DEPTH
								5221

PACKER @ _____ BRAND & TYPE _____ PLUG @ _____ TYPE _____ PLUG @ _____ TYPE _____
PACKER @ _____ BRAND & TYPE _____ PLUG @ _____ TYPE _____ PLUG @ _____ TYPE _____

COMPLETION & TEST DATA BY PRODUCING FORMATION

202 WLCX

FORMATION	<u>Wilcox</u>							<u>No Frac</u>
SPACING & SPACING ORDER NUMBER	<u>57861 (40)</u>							
CLASS: Oil, Gas, Dry, Inj, Disp, Comm Disp, Svc	<u>oil</u>							
PERFORATED INTERVALS	<u>open hole</u> <u>5181-5201'</u>							
	<u>slotted liner</u>							
ACID VOLUME	<u>15% NE FE</u>	<u>500 Gallons + 65 gallons Acetic</u>						
FRACTURE TREATMENT (Fluids/Prop Amounts)								

Min Gas Allowable (165-10-17-7)

Gas Purchaser/Measurer

 OR

First Sales Date

INITIAL TEST DATA

Oil Allowable (165-10-13-3)

INITIAL TEST DATE	<u>4/18/2014</u>			
OIL-BBL/DAY	<u>1.1</u>			
OIL-GRAVITY (API)	<u>39</u>			
GAS-MCF/DAY	<u>0</u>			
GAS-OIL RATIO CU FT/BBL				
WATER-BBL/DAY	<u>85</u>			
PUMPING OR FLOWING	<u>pumping</u>			
INITIAL SHUT-IN PRESSURE				
CHOKE SIZE				
FLOW TUBING PRESSURE				

A record of the formations drilled through, and pertinent remarks are presented on the reverse. I declare that I have knowledge of the contents of this report and am authorized by my organization to make this report, which was prepared by me or under my supervision and direction, with the data and facts stated herein to be true, correct, and complete to the best of my knowledge and belief.

<u>Russel Lewis</u>	<u>Russel Lewis</u>	<u>4/19/2014</u>	<u>316-265-3511</u>
SIGNATURE	NAME (PRINT OR TYPE)	DATE	PHONE NUMBER
<u>2020 N. Bramblewood</u>	<u>Wichita KS 67206</u>	<u>rlewis@berexco.com</u>	
ADDRESS	CITY STATE ZIP	EMAIL ADDRESS	

PLEASE TYPE OR USE BLACK INK ONLY
FORMATION RECORD

Give formation names and tops, if available, or descriptions and thickness of formations drilled through. Show intervals cored or drillstem tested.

LEASE NAME _____ WELL NO. _____

NAMES OF FORMATIONS	TOP
<i>Wilcox</i>	<i>5036</i>

FOR COMMISSION USE ONLY

ITD on file YES NO

APPROVED _____ DISAPPROVED _____ 2) Reject Codes _____

Were open hole logs run? yes no

Date Last log was run *2/19/2014*

Was CO₂ encountered? yes no at what depths? _____

Was H₂S encountered? yes no at what depths? _____

Were unusual drilling circumstances encountered? yes no
If yes, briefly explain below

Other remarks: *Deepened well from 5093' to 5221'. Inserted 4 1/2" Liner Slotted from 5181 to 5221 the well is an open hole completion from 5023' to 5221'*

640 Acres

If more than three drainholes are proposed, attach a separate sheet indicating the necessary information.

Direction must be stated in degrees azimuth. Please note, the horizontal drainhole and its end point must be located within the boundaries of the lease or spacing unit.

Directional surveys are required for all drainholes and directional wells.

640 Acres

BOTTOM HOLE LOCATION FOR DIRECTIONAL HOLE

SEC	TWP	RGE	COUNTY		
Spot Location		Feet From 1/4 Sec Lines		FSL	FWL
1/4	1/4	1/4	1/4		
Measured Total Depth		True Vertical Depth		BHL From Lease, Unit, or Property Line:	

BOTTOM HOLE LOCATION FOR HORIZONTAL HOLE: (LATERALS)

LATERAL #1

SEC	TWP	RGE	COUNTY		
Spot Location		Feet From 1/4 Sec Lines		FSL	FWL
1/4	1/4	1/4	1/4		
Depth of Deviation		Radius of Turn	Direction		Total Length
Measured Total Depth		True Vertical Depth		BHL From Lease, Unit, or Property Line:	

LATERAL #2

SEC	TWP	RGE	COUNTY		
Spot Location		Feet From 1/4 Sec Lines		FSL	FWL
1/4	1/4	1/4	1/4		
Depth of Deviation		Radius of Turn	Direction		Total Length
Measured Total Depth		True Vertical Depth		BHL From Lease, Unit, or Property Line:	

LATERAL #3

SEC	TWP	RGE	COUNTY		
Spot Location		Feet From 1/4 Sec Lines		FSL	FWL
1/4	1/4	1/4	1/4		
Depth of Deviation		Radius of Turn	Direction		Total Length
Measured Total Depth		True Vertical Depth		BHL From Lease, Unit, or Property Line:	