

Oklahoma Corporation Commission  
Oil & Gas Conservation Division  
Post Office Box 52000  
Oklahoma City, Oklahoma 73152-2000  
Rule 165: 10-3-25

Form 1002A

API No.: 35019259810000

**Completion Report**

Spud Date: October 06, 2013

OTC Prod. Unit No.: 019-212167

Drilling Finished Date: October 17, 2013

1st Prod Date: January 09, 2014

Completion Date: March 15, 2014

**Drill Type: DIRECTIONAL HOLE**

Well Name: SIERRA RANCH 1-33

Purchaser/Measurer: DCP

Location: CARTER 33 3S 3W  
NW NE SW NW  
1467 FNL 838 FWL of 1/4 SEC  
Latitude: 34.25602 Longitude: -97.52453  
Derrick Elevation: 940 Ground Elevation: 927

First Sales Date: 02/12/2014

Operator: CHARTER OAK PRODUCTION CO LLC 21672

13929 QUAIL POINTE DR  
OKLAHOMA CITY, OK 73134-1037

Completion Type	
<input type="checkbox"/>	Single Zone
<input type="checkbox"/>	Multiple Zone
<input checked="" type="checkbox"/>	Commingled

Location Exception
Order No
There are no Location Exception records to display.

Increased Density
Order No
There are no Increased Density records to display.

Casing and Cement							
Type	Size	Weight	Grade	Feet	PSI	SAX	Top of CMT
CONDUCTOR	16			40		7	SURFACE
SURFACE	9 5/8	36	J-55	503		275	SURFACE
PRODUCTION	5 1/2	20	P-110	7748		460	5730

Liner								
Type	Size	Weight	Grade	Length	PSI	SAX	Top Depth	Bottom Depth
There are no Liner records to display.								

**Total Depth: 7757**

Packer	
Depth	Brand & Type
There are no Packer records to display.	

Plug	
Depth	Plug Type
There are no Plug records to display.	

Initial Test Data

Test Date	Formation	Oil BBL/Day	Oil-Gravity (API)	Gas MCF/Day	Gas-Oil Ratio Cu FT/BBL	Water BBL/Day	Pumpin or Flowing	Initial Shut-In Pressure	Choke Size	Flow Tubing Pressure
Mar 15, 2014	COMMINGLE ALL ZONES	13	41	80	6154	18	PUMPING	3000		

**Completion and Test Data by Producing Formation**

Formation Name: MORRIS

Code: 403MRRS

Class: OIL

**Spacing Orders**

Order No	Unit Size
605795	160

**Perforated Intervals**

From	To
7164	7225

**Acid Volumes**

4,500 GALLONS 15% NEFE

**Fracture Treatments**

5,276 BARRELS SLICK WATER, 2,080 SACKS 20/40 SAND, 225 TONS CO2

Formation Name: CARPENTER

Code: 404CRPR

Class: OIL

**Spacing Orders**

Order No	Unit Size
605795	160

**Perforated Intervals**

From	To
6970	7106

**Acid Volumes**

4,500 GALLONS 15% NEFE

**Fracture Treatments**

5,276 BARRELS SLICK WATER, 2,080 SACKS 20/40 SAND, 225 TONS CO2

Formation Name: TUSSY

Code: 404TSSY

Class: OIL

**Spacing Orders**

Order No	Unit Size
605795	160

**Perforated Intervals**

From	To
6730	6790

**Acid Volumes**

4,500 GALLONS 15% NEFE

**Fracture Treatments**

5,276 BARRELS SLICK WATER, 2,080 SACKS 20/40 SAND, 225 TONS CO2

Formation Name: FUSULINID LOW

Code: 404FSLDL

Class: OIL

**Spacing Orders**

Order No	Unit Size
605795	160

**Perforated Intervals**

From	To
6374	6445

**Acid Volumes**

4,500 GALLONS 15% NEFE
------------------------

**Fracture Treatments**

5,276 BARRELS SLICK WATER, 2,080 SACKS 20/40 SAND, 225 TONS CO2
---

Formation Name: COMMINGLE ALL ZONES

Code:

Class: OIL

Formation	Top
LOWER FUSULINID	6320
TUSSY	6660
CARPENTER	6920
MORRIS	7160
VIOLA	7420

Were open hole logs run? Yes

Date last log run: October 18, 2013

Were unusual drilling circumstances encountered? No

Explanation:

**Other Remarks**

IRREGULAR SECTION.

**Bottom Holes**

Sec: 33 TWP: 3S RGE: 3W County: CARTER

NW SE NW NW

693 FNL 697 FWL of 1/4 SEC

Depth of Deviation: 0 Radius of Turn: 0 Direction: 0 Total Length: 0

Measured Total Depth: 7757 True Vertical Depth: 7672 End Pt. Location From Release, Unit or Property Line: 693

**FOR COMMISSION USE ONLY**

Status: Accepted

1123568

**AS SUBMITTED**

**RECEIVED**

Form 1002A  
Rev. 2009

API NO. 35-019-25981  
OTC PROD. UNIT NO. 019-212167

PLEASE TYPE OR USE BLACK NOTE:

Attach copy of original 1002C if recompletion or reentry.

Oklahoma City, Oklahoma 73152-2000

Rule 165:10-3-25

MAR 24 2014

OKLAHOMA CORPORATION COMMISSION

ORIGINAL  
 AMENDED (Reason)

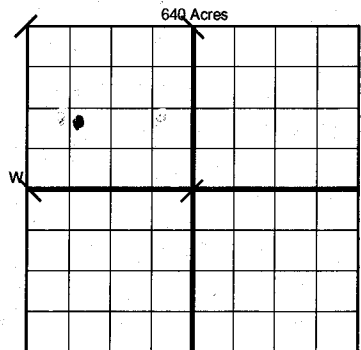
COMPLETION REPORT

TYPE OF DRILLING OPERATION

STRAIGHT HOLE  DIRECTIONAL HOLE  HORIZONTAL HOLE  
 SERVICE WELL

If directional or horizontal, see reverse for bottom hole location.

SPUD DATE 10/6/13  
DRLG FINISHED DATE 10/17/13  
DATE OF WELL COMPLETION 3/15/14  
1st PROD DATE 1/9/14  
RECOMP DATE  
Longitude (if known) -97.52453  
OTC/OCC OPERATOR NO. 21672



LOCATE WELL

COMPLETION TYPE

SINGLE ZONE  
 MULTIPLE ZONE  
 COMMINGLED Application Date 3/19/14  
LOCATION N/A  
EXCEPTION ORDER N/A  
INCREASED DENSITY ORDER NO. N/A

CASING & CEMENT (Form 1002C must be attached)

TYPE	SIZE	WEIGHT	GRADE	FEET	PSI	SAX	TOP OF CMT
CONDUCTOR	16"			40'			Surface
SURFACE	9 5/8"	36#	J-55	503'		275	Surface
INTERMEDIATE							
PRODUCTION	5 1/2"	20#	P-110	7748'		460	5730'
LINER							

PACKER @ \_\_\_\_\_ BRAND & TYPE \_\_\_\_\_ PLUG @ \_\_\_\_\_ TYPE \_\_\_\_\_ PLUG @ \_\_\_\_\_ TYPE \_\_\_\_\_ TOTAL DEPTH 7760'  
PACKER @ \_\_\_\_\_ BRAND & TYPE \_\_\_\_\_ PLUG @ \_\_\_\_\_ TYPE \_\_\_\_\_ PLUG @ \_\_\_\_\_ TYPE \_\_\_\_\_

COMPLETION & TEST DATA BY PRODUCING FORMATION *403MRRS, 404CRPR, 404TSSY, 404F5LDL*

FORMATION	Morris	Carpenter	Tussy	Lower Fusilinid	
SPACING & SPACING ORDER NUMBER	160 Ac. - 605795	160 Ac. - 605795	160 Ac. - 605795	160 Ac. - 605795	
CLASS: Oil, Gas, Dry, Inj, Disp, Comm Disp, Svc	Oil	Oil	Oil	Oil	
PERFORATED INTERVALS	7164' - 7165'	6970' - 6972'	6730' - 6736'	6374' - 6376'	
	7180' - 7182'	6975' - 6977'	6773' - 6775'	6385' - 6387'	
	7224' - 7225'	7105' - 7106'	6785' - 6790'	6444' - 6445'	
ACID/VOLUME	4500 Gal 15% NeFe	Treated with Morris	Treated with Morris	Treated with Morris	
FRACTURE TREATMENT (Fluids/Prop Amounts)	5276 BBL slick water				
	2080 sx 20/40 sand				
	225 tons CO2				

*Morris Report to Fractures*

Min Gas Allowable (165:10-17-7)

Gas Purchaser/Measurer

DCP

OR Oil Allowable (165:10-13-3)

First Sales Date

2/12/14

INITIAL TEST DATA

INITIAL TEST DATE	3/15/14	Tested with Morris	Tested with Morris	Tested with Morris	
OIL-BBL/DAY	13				
OIL-GRAVITY (API)	41.0				
GAS-MCF/DAY	80				
GAS-OIL RATIO CU FT/BBL	6153.85				
WATER-BBL/DAY	18				
PUMPING OR FLOWING	Pumping				
INITIAL SHUT-IN PRESSURE	3000 psi				
CHOKE SIZE	N/A				
FLOW TUBING PRESSURE	N/A				

*All 2013*

A record of the formations drilled through, and pertinent remarks are presented on the reverse. I declare that I have knowledge of the contents of this report and am authorized by my organization to make this report which was prepared by me or under my supervision and direction, with the data and facts stated herein to be true, correct, and complete to the best of my knowledge and belief.

*Joseph C. Brevetti*  
SIGNATURE NAME (PRINT OR TYPE) JC Brevetti, Engineering Tech.  
13929 Quail Pointe Dr. Oklahoma City OK 73134  
ADDRESS CITY STATE ZIP  
DATE 3/19/14 PHONE NUMBER (405) 286-0361  
EMAIL ADDRESS brevetti@charteroakproduction.com

**PLEASE TYPE OR USE BLACK INK ONLY**  
**FORMATION RECORD**

Give formation names and tops, if available, or descriptions and thickness of formations drilled through. Show intervals cored or drillstem tested.

LEASE NAME Sierra Ranch

WELL NO. 1-33

NAMES OF FORMATIONS	TOP
Lower Fusulinid	6320'
Tussy	6660'
Carpenter	6920'
Morris	7160'
Viola	7420'

**FOR COMMISSION USE ONLY**

ITD on file  YES  NO

APPROVED \_\_\_\_\_ DISAPPROVED \_\_\_\_\_

2) Reject Codes

---



---



---



---

Were open hole logs run?  yes  no

Date Last log was run October 18, 2013

Was CO<sub>2</sub> encountered?  yes  no at what depths? \_\_\_\_\_

Was H<sub>2</sub>S encountered?  yes  no at what depths? \_\_\_\_\_

Were unusual drilling circumstances encountered?  yes  no  
If yes, briefly explain below

Other remarks:

---



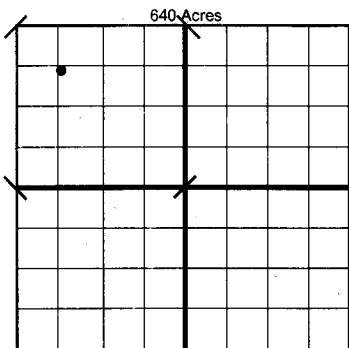
---



---



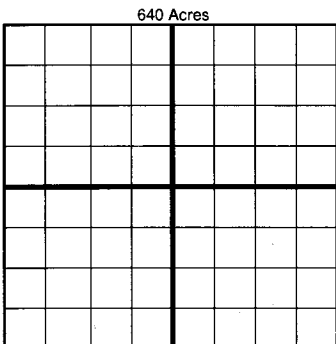
---



If more than three drainholes are proposed, attach a separate sheet indicating the necessary information.

Direction must be stated in degrees azimuth. Please note, the horizontal drainhole and its end point must be located within the boundaries of the lease or spacing unit.

Directional surveys are required for all drainholes and directional wells.



**BOTTOM HOLE LOCATION FOR DIRECTIONAL HOLE**

SEC 33	TWP 03S	RGE 03W	COUNTY Carter
Spot Location NW 1/4 SE 1/4 NW 1/4 NW 1/4		Feet From 1/4 Sec Lines	FSL 693' FNL 697'
Measured Total Depth	True Vertical Depth	BHL From Lease, Unit, or Property Line:	
7757'	7672'	693' FNL & 697' FWL	

**BOTTOM HOLE LOCATION FOR HORIZONTAL HOLE: (LATERALS)**

**LATERAL #1**

SEC	TWP	RGE	COUNTY
Spot Location 1/4 1/4 1/4 1/4		Feet From 1/4 Sec Lines	FSL FWL
Depth of Deviation	Radius of Turn	Direction	Total Length
Measured Total Depth	True Vertical Depth	BHL From Lease, Unit, or Property Line:	

**LATERAL #2**

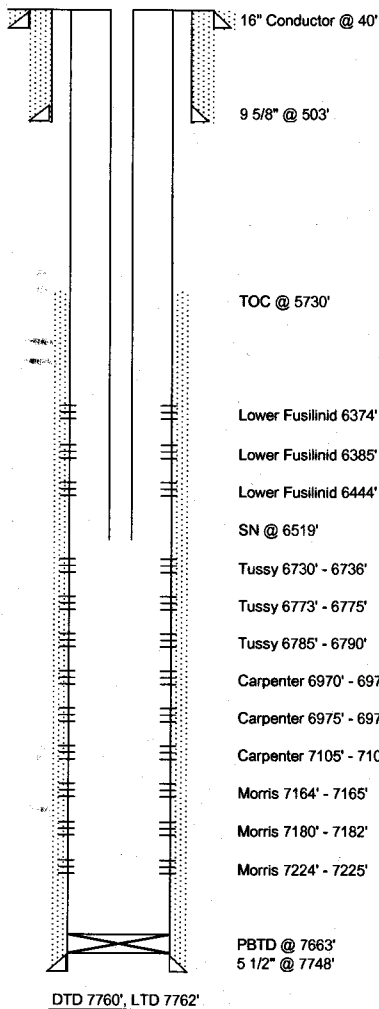
SEC	TWP	RGE	COUNTY
Spot Location 1/4 1/4 1/4 1/4		Feet From 1/4 Sec Lines	FSL FWL
Depth of Deviation	Radius of Turn	Direction	Total Length
Measured Total Depth	True Vertical Depth	BHL From Lease, Unit, or Property Line:	

**LATERAL #3**

SEC	TWP	RGE	COUNTY
Spot Location 1/4 1/4 1/4 1/4		Feet From 1/4 Sec Lines	FSL FWL
Depth of Deviation	Radius of Turn	Direction	Total Length
Measured Total Depth	True Vertical Depth	BHL From Lease, Unit, or Property Line:	

## Charter Oak Production Co., LLC

Created By: JC Brevetti 03/19/14



Operator: Charter Oak Production Co., LLC
Lease Name: Sierra Ranch
Well #: 1-33
Field: Healdton
State: Oklahoma
County: Carter
Location: 1467' FNL, 838' FWL NW
Sec, Twn, Rnge: 33-T3S-R3W
Spud Date: 10/6/13
Completion Date: 3/15/14
API: 35-019-25981
GL: 927', KB: 941', DF: 940'
OTC PUN: 019-212167

Surface Equipment Inventory
Pumping Unit: IPS
Motor:
Oil Tanks: 2 - 210 BBL Steel
Water Tank: 1 - 200 BBL FG
Separator: 30' x 10'
Heater: 4' x 20'
Pump:
Rod String Design:
Subs:
Polished rod:

Casing Design							
Size	Weight	Grade	Joints	Hole Size	Setting Depth	Sx Cement	TOC
16"		Conductor			40'		Surface
9 5/8"	36#	J-55	13	12 1/4"	503'	275	Surface
5 1/2"	20#	P-110	183	8 3/4"	7748'	460	5730'

Tubing Design						
Size	Weight	Grade	Joints	Hole Size	Setting Depth	Comments
2 3/8"	4.7#	L-80	204		6519'	

Perforated Intervals			
Top	Bottom	Formation	Perforation Date
6374	6376	Lower Fusilinid	11/5/2013
6385	6387	Lower Fusilinid	11/5/2013
6444	6445	Lower Fusilinid	11/5/2013
6730	6736	Tussy	11/5/2013
6773	6775	Tussy	11/5/2013
6785	6790	Tussy	11/5/2013
6970	6972	Carpenter	11/5/2013
6975	6977	Carpenter	11/5/2013
7105	7106	Carpenter	11/5/2013
7164	7165	Morris	11/5/2013
7180	7182	Morris	11/5/2013
7224	7225	Morris	11/5/2013

Packers, Plugs, Etc.					
Type	Depth	Date Set	Date Removed	Removal Method	Notes
SN	6519'	1/8/2014			

Notes

Current Through: 3/15/14 (Last Drilling Report)