

Oklahoma Corporation Commission
Oil & Gas Conservation Division
Post Office Box 52000
Oklahoma City, Oklahoma 73152-2000
Rule 165: 10-3-25

Form 1002A

API No.: 35119241750000

Completion Report

Spud Date: January 12, 2014

OTC Prod. Unit No.: 119-212658

Drilling Finished Date: January 28, 2014

1st Prod Date: March 12, 2014

Completion Date: March 04, 2014

Drill Type: HORIZONTAL HOLE

Min Gas Allowable: Yes

Well Name: GERMAN 2-13MH

Purchaser/Measurer: DCP MIDSTREAM

Location: PAYNE 13 18N 4E
NE NE NE NW
2475 FSL 2475 FWL of 1/4 SEC
Derrick Elevation: 810 Ground Elevation: 799

First Sales Date: 03/12/2014

Operator: ROBERSON OIL COMPANY INC 19500
PO BOX 8
201 E COTTAGE ST
ADA, OK 74821-0008

Completion Type	
X	Single Zone
	Multiple Zone
	Commingled

Location Exception
Order No
There are no Location Exception records to display.

Increased Density
Order No
There are no Increased Density records to display.

Casing and Cement							
Type	Size	Weight	Grade	Feet	PSI	SAX	Top of CMT
CONDUCTOR	16			46		10	SURFACE
SURFACE	9 5/8	36	J-55	389	2000	190	SURFACE
PRODUCTION	5 1/2	17	P-110	5498	4000	660	3153

Liner								
Type	Size	Weight	Grade	Length	PSI	SAX	Top Depth	Bottom Depth
There are no Liner records to display.								

Total Depth: 6226

Packer	
Depth	Brand & Type
There are no Packer records to display.	

Plug	
Depth	Plug Type
There are no Plug records to display.	

Initial Test Data										
Test Date	Formation	Oil BBL/Day	Oil-Gravity (API)	Gas MCF/Day	Gas-Oil Ratio Cu FT/BBL	Water BBL/Day	Pumpin or Flowing	Initial Shut-In Pressure	Choke Size	Flow Tubing Pressure
Mar 17, 2014	MISSISSIPPIAN	60	36	100	1667	460	PUMPING	300		

Completion and Test Data by Producing Formation										
Formation Name: MISSISSIPPIAN			Code: 359MSSP			Class: OIL				
Spacing Orders				Perforated Intervals						
Order No	Unit Size			From			To			
621121	640			4030			5435			
Acid Volumes				Fracture Treatments						
1,464 BARRELS 15% ACID				40,000 BARRELS SLICK WATER, 867,500 POUNDS						

Formation	Top
PERU	2914
BIG LIME	3055
OSWEGO	3101
PRUE	3145
SKINNER	3231
RED FORK	3406
MISSISSIPPI	3664

Were open hole logs run? No

Date last log run:

Were unusual drilling circumstances encountered? No

Explanation:

Other Remarks
IRREGULAR SECTION.

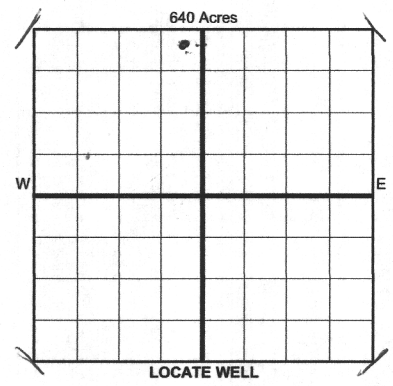
Lateral Holes
Sec: 13 TWP: 18N RGE: 4E County: PAYNE
NE NE NE SW
2344 FSL 154 FEL of 1/4 SEC
Depth of Deviation: 2947 Radius of Turn: 1097 Direction: 180 Total Length: 2182
Measured Total Depth: 6226 True Vertical Depth: 3663 End Pt. Location From Release, Unit or Property Line: 2344

FOR COMMISSION USE ONLY
Status: Accepted
1123598

AS SUBMITTED

RECEIVED

MAR 20 2014

Form 1002A
Rev. 2009API
No. 119-24175
OTC PROD.
UNIT NO. 119-212658PLEASE TYPE OR USE BLACK INK ONLY
NOTE:Attach copy of original 1002A
if recompletion or reentry. ORIGINAL
 AMENDED (Reason)Rule 165:10-3-25
COMPLETION REPORTOKLAHOMA CORPORATION
COMMISSIONTYPE OF DRILLING OPERATION
 STRAIGHT HOLE DIRECTIONAL HOLE HORIZONTAL HOLE
 SERVICE WELLSPUD DATE 1-12-14
DRLG FINISHED DATE 1-28-14
DATE OF WELL COMPLETION 3-04-14
1st PROD DATE 3-12-14

If directional or horizontal, see reverse for bottom hole location.

COUNTY Payne SEC 13 TWP 18N RGE 04E
LEASE NAME GERMAN WELL NO. 2-13MH
NE 1/4 NE 1/4 NE 1/4 NW 1/4 FSL OF 1/4 SEC 2475' FWL OF 1/4 SEC 2475'
ELEVATIO N Derrick 810' Ground 799' Latitude (if known) 36° Longitude 96° 49'
OPERATOR NAME ROBERSON OIL COMPANY, INC. OTC/OCC OPERATOR NO. 19500
ADDRESS PO Box 8
CITY Ada STATE OK ZIP 74821RECOMP DATE
Longitude (if known) 44.162**COMPLETION TYPE** SINGLE ZONE
 MULTIPLE ZONE
Application Date
 COMMINGLED
Application Date
LOCATION
EXCEPTION ORDER
INCREASED DENSITY
ORDER NO.**CASING & CEMENT (Form 1002C must be attached)**

TYPE	SIZE	WEIGHT	GRADE	FEET	PSI	SAX	TOP OF CMT
CONDUCTOR	16"			46'		10	Surface
SURFACE	9 5/8"	36#	J55	389'	2000	190	Surface
INTERMEDIATE							
PRODUCTION	5 1/2"	17#	P-110	5498'	4000	660	3153'
LINER							

PACKER @ _____ BRAND & TYPE _____ PLUG @ _____ TYPE _____ PLUG @ _____ TYPE _____
PACKER @ _____ BRAND & TYPE _____ PLUG @ _____ TYPE _____ PLUG @ _____ TYPE _____

TOTAL DEPTH 6226'

COMPLETION & TEST DATA BY PRODUCING FORMATION 359MSSP

FORMATION	Spacing & Spacing				
Mississippian	640ac. #621121				
CLASS: Oil, Gas, Dry, Inj, Disp, Comm Disp, Svc	Oil				
PERFORATED INTERVALS	4030-4035'	4330-4335'	4630-4635'	4930-4935'	5230-5235'
	4130-4135'	4430-4435'	4730-4735'	5030-5035'	5330-5335'
	4230-4235'	4530-4535'	4830-4835'	5130-5135'	5430-5435'
ACID/VOLUME	1464 bbls	15% Acid			
FRACTURE TREATMENT (Fluids/Prop Amounts)	40,000 Bbls	867,500 lbs			
	Slick Water				

Reported to Free Focus

 Min Gas Allowable (165:10-17-7)
OR
 Oil Allowable (165:10-13-3)Gas Purchaser/Measurer DCP Midstream
First Sales Date 3-12-14**INITIAL TEST DATA**

INITIAL TEST DATE	3-17-14			
OIL-BBL/DAY	60			
OIL-GRAVITY (API)	36°			
GAS-MCF/DAY	100			
GAS-OIL RATIO CU FT/BBL	1667:1			
WATER-BBL/DAY	460			
PUMPING OR FLOWING	Pumping			
INITIAL SHUT-IN PRESSURE	300			
CHOKE SIZE	n/a			
FLOW TUBING PRESSURE	n/a			

A record of the formations drilled through, and pertinent remarks are presented on the reverse. I declare that I have knowledge of the contents of this report and am authorized by my organization to make this report, which was prepared by me or under my supervision and direction, with the data and facts stated herein to be true, correct, and complete to the best of my knowledge and belief.

David A. Roberson, II
 SIGNATURE David Roberson, II, Pres. 580-332-6170
 NAME (PRINT OR TYPE) DATE PHONE NUMBER
 PO Box 8, Ada, OK 74821 Ada OK 74821
 ADDRESS CITY STATE ZIP EMAIL ADDRESS roi11@yahoo.com

PLEASE TYPE OR USE BLACK INK ONLY

FORMATION RECORD

Give formation names and tops, if available, or descriptions and thickness of formations drilled through. Show intervals cored or drillstem tested.

LEASE NAME German

WELL NO. 2-13MH

NAMES OF FORMATIONS	TOP
Peru	2914'
Big Lime	3055'
Oswego	3101'
Prue	3145'
Skinner	3231'
Redfork	3406'
Mississippi	3664'

FOR COMMISSION USE ONLY

ITD on file YES NO

APPROVED _____ DISAPPROVED _____

2) Reject Codes _____

Were open hole logs run? yes no

Date Last log was run n/a

Was CO₂ encountered? yes no at what depths? _____

Was H₂S encountered? yes no at what depths? _____

Were unusual drilling circumstances encountered? yes no
 If yes, briefly explain below _____

Other remarks: _____

640 Acres

If more than three drainholes are proposed, attach a separate sheet indicating the necessary information.

Direction must be stated in degrees azimuth. Please note, the horizontal drainhole and its end point must be located within the boundaries of the lease or spacing unit.

Directional surveys are required for all drainholes and directional wells.

640 Acres

BOTTOM HOLE LOCATION FOR DIRECTIONAL HOLE

SEC	TWP	RGE	COUNTY	Spot Location		Feet From 1/4 Sec Lines	FSL	FWL
				1/4	1/4	1/4	1/4	
Measured Total Depth		True Vertical Depth		BHL From Lease, Unit, or Property Line:				

BOTTOM HOLE LOCATION FOR HORIZONTAL HOLE: (LATERALS)

LATERAL #1

SEC	TWP	RGE	COUNTY	Spot Location		Feet From 1/4 Sec Lines	FSL	FWL
13	18N	04E	Payne	S2	NE 1/4	NE 1/4	SW 1/4	
Depth of Deviation		Radius of Turn		Direction		Total Length		
2947'		1097'		180		2182'		
Measured Total Depth		True Vertical Depth		BHL From Lease, Unit, or Property Line:				
6226'		3662'		2344'				

LATERAL #2

SEC	TWP	RGE	COUNTY	Spot Location		Feet From 1/4 Sec Lines	FSL	FWL
				1/4	1/4	1/4	1/4	
Depth of Deviation		Radius of Turn		Direction		Total Length		
Measured Total Depth		True Vertical Depth		BHL From Lease, Unit, or Property Line:				

LATERAL #3

SEC	TWP	RGE	COUNTY	Spot Location		Feet From 1/4 Sec Lines	FSL	FWL
				1/4	1/4	1/4	1/4	
Depth of Deviation		Radius of Turn		Direction		Total Length		
Measured Total Depth		True Vertical Depth		BHL From Lease, Unit, or Property Line:				

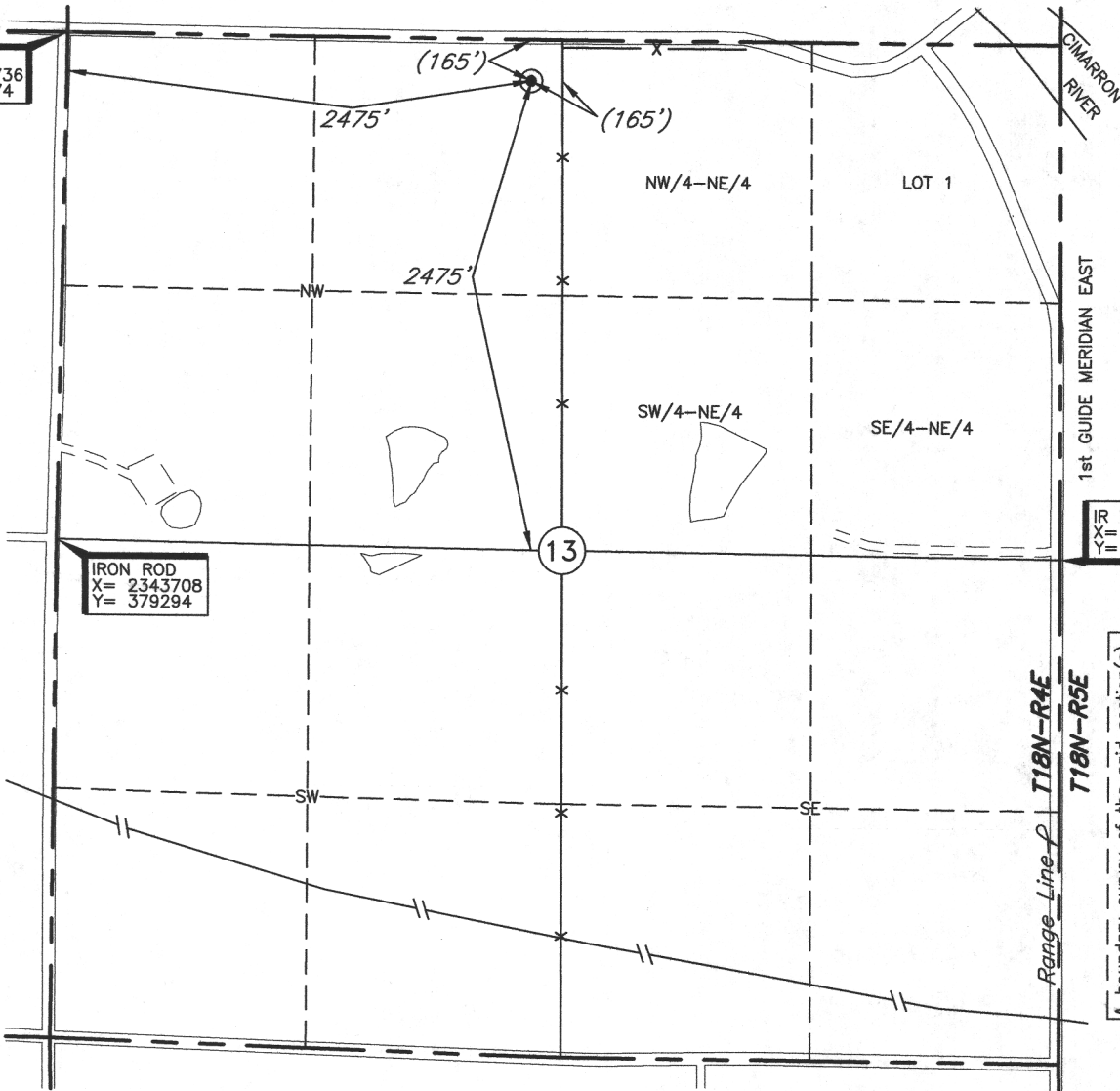
TOPOGRAPHIC LAND SURVEYORS OF OKLAHOMA

6709 NORTH CLASSEN BLVD., OKLAHOMA CITY, OKLA. 73116 * LOCAL (405) 843-4847 * OUT OF STATE (800) 654-3219
 Certificate of Authorization No. 1293.

PAYNE

County, Oklahoma
 2475'FSL-2475'FWL-NW/4 Section 13 Township 18N Range 4E I.M.

PK SPIKE
 X= 2343736
 Y= 381974



IRON ROD
 X= 2343708
 Y= 379294

IR W/CAP
 X= 2349058
 Y= 379258



GRID
 NAD-27
 OK NORTH
 US Feet

Scale:
 1" = 1000'

CORNER COORDINATES ARE TAKEN FROM POINTS SURVEYED IN THE FIELD.

Distances shown in (parenthesis) are calculated based upon the Quarter Section being 2640 feet, those shown in [brackets] are based on GLO (General Land Office) distances and have NOT been measured on the ground.

A boundary survey of the said section(s) shown hereon was not performed per the request of the operator shown hereon.

Operator: ROBERSON OIL COMPANY, INC.

Lease Name: GERMAN

Well No.: 2-13MH ELEVATION: 799' Gr. at Stake

Topography & Vegetation Loc. fell in wheat field

Good Drill Site? Yes Reference Stakes or Alternate Location Stakes Set None

Best Accessibility to Location From North off county road

Distance & Direction from Hwy Jct or Town From Jct. St. Hwy. 51 E-W and St. Hwy. 108 South, go ±5.0 mi. South on St. Hwy. 108, then ±4.0 mi. East on county road to the NW Cor. of Sec. 13-T18N-R4E

Date of Drawing: Dec. 19, 2013

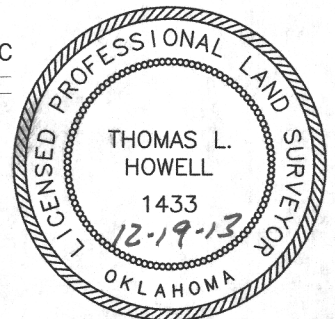
Invoice # 212759 Date Staked: Dec. 17, 2013 AC

This information was gathered with a GPS receiver with ±1 foot Horiz./Vert. accuracy.
 DATUM: NAD-27
 LAT: 36°02'34.8"N
 LONG: 96°49'44.2"W
 LAT: 36.043010864° N
 LONG: 96.828937176° W
 STATE PLANE COORDINATES: (US Feet)
 ZONE: OK NORTH
 X: 2346209
 Y: 381753

CERTIFICATE:

I, Thomas L. Howell a Oklahoma Licensed Land Surveyor and an authorized agent of Topographic Land Surveyors of Oklahoma, do hereby certify that the above described well location was surveyed and staked on the ground as shown herein.

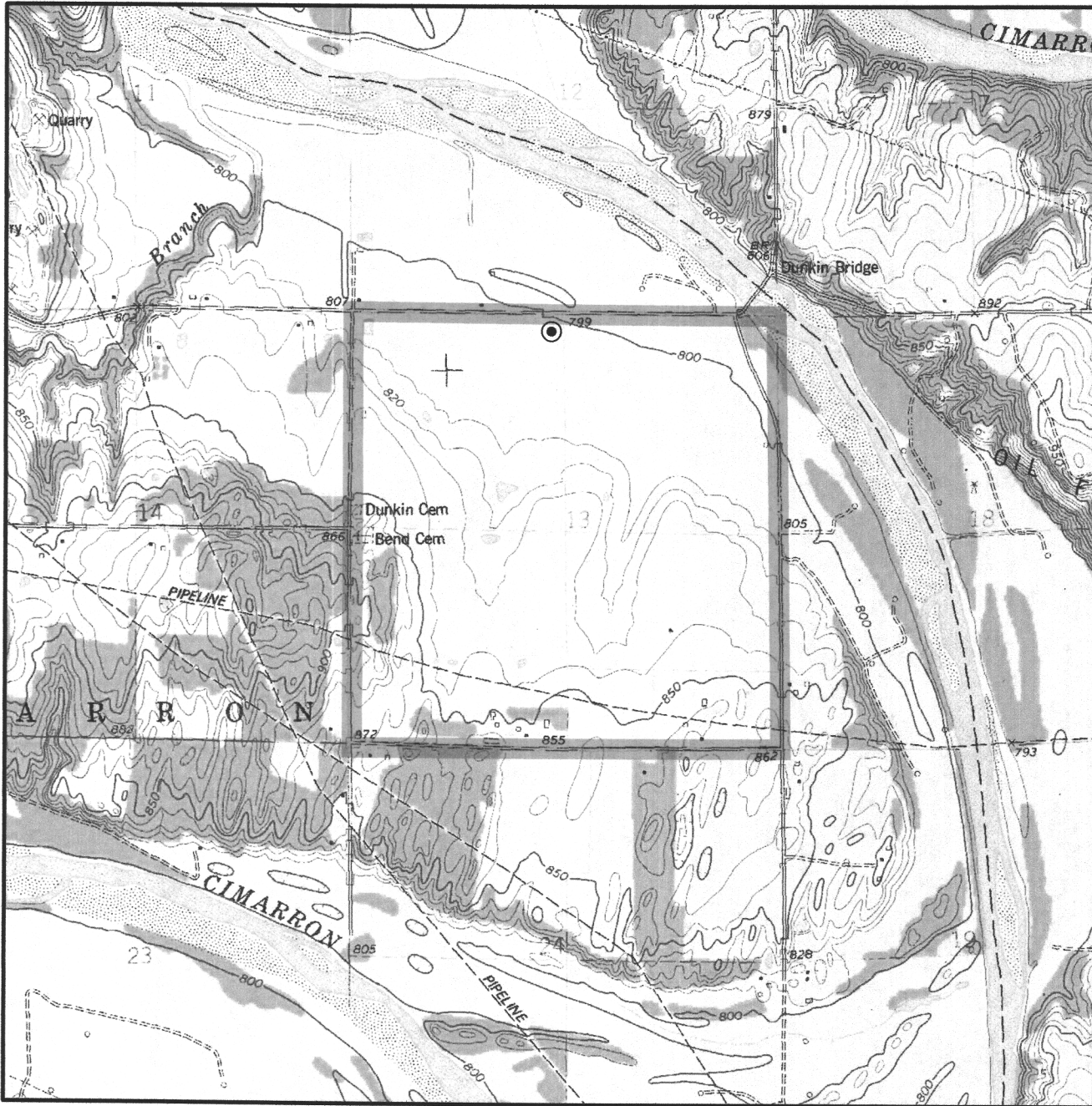
Thomas L. Howell
 Oklahoma Lic. No. 1433



TOPOGRAPHIC LAND SURVEYORS OF OKLAHOMA

Surveying and Mapping for the Energy Industry
6709 North Classen Blvd. Oklahoma City, OK 73116 www.topographic.com
Telephone Numbers: Local (405) 843-4847 Toll Free (800) 654-3219

LOCATION & ELEVATION VERIFICATION MAP



Sec. 13 Twp. 18N Rng. 4E IM

County PAYNE State OK

Operator ROBERSON OIL COMPANY, INC.

Description 2475'FSL-2475'FWL-NW/4

Lease GERMAN 2-13MH

Elevation 799' Gr. at Stake

U.S.G.S. Topographic
Quadrangle Map TWIN MOUNDS, OK

Above Background Data from
U.S.G.S. Topographic Map
Scale: 1"=2000'

Contour Interval 10'

This location has been very carefully staked on the ground according to the best official survey records, maps and photographs available to us, but its accuracy is not guaranteed. When elevation is shown hereon it is the ground elevation of the location stake.
Review this plat and inform us immediately of any possible discrepancy.



TOPOGRAPHIC
LOYALTY INNOVATION LEGACY

LAND SURVEYORS OF OKLAHOMA

Dec. 17, 2013