

Oklahoma Corporation Commission
 Oil & Gas Conservation Division
 Post Office Box 52000
 Oklahoma City, Oklahoma 73152-2000
 Rule 165: 10-3-25

Form 1002A

API No.: 35095205680001

Completion Report

Spud Date: July 25, 2011

OTC Prod. Unit No.: 095-212130

Drilling Finished Date: August 28, 2013

1st Prod Date: January 20, 2014

Amended

Completion Date: December 16, 2013

Amend Reason: FINISH DRILLING AND COMPLETING WELL

Drill Type: HORIZONTAL HOLE

Well Name: VERONICA (VERONICA 4-9H) 4-16H9

Purchaser/Measurer:

Location: MARSHALL 16 5S 6E
 NE NE NW NE
 250 FNL 1510 FEL of 1/4 SEC
 Derrick Elevation: 0 Ground Elevation: 785

First Sales Date:

Operator: XTO ENERGY INC 21003

810 HOUSTON ST
 FORT WORTH, TX 76102-6203

Completion Type	
X	Single Zone
	Multiple Zone
	Commingled

Location Exception	
Order No	
621741	

Increased Density	
Order No	
585016	

Casing and Cement							
Type	Size	Weight	Grade	Feet	PSI	SAX	Top of CMT
CONDUCTOR	16	55	J-55	55		7	SURFACE
SURFACE	9 5/8	36	K-55	1009		340	SURFACE
PRODUCTION	5 1/2	20, 23	P-110	12961		1280	4764

Liner								
Type	Size	Weight	Grade	Length	PSI	SAX	Top Depth	Bottom Depth
There are no Liner records to display.								

Total Depth: 12961

Packer	
Depth	Brand & Type
There are no Packer records to display.	

Plug	
Depth	Plug Type
There are no Plug records to display.	

Initial Test Data										
Test Date	Formation	Oil BBL/Day	Oil-Gravity (API)	Gas MCF/Day	Gas-Oil Ratio Cu FT/BBL	Water BBL/Day	Pumpin or Flowing	Initial Shut-In Pressure	Choke Size	Flow Tubing Pressure
Feb 18, 2014	WOODFORD	109	38	1303	11954	340	FLOWING	800	OPEN	200

Completion and Test Data by Producing Formation										
Formation Name: WOODFORD			Code: 319WDFD			Class: OIL				
Spacing Orders				Perforated Intervals						
Order No		Unit Size		From			To			
584675		640		7750			12802			
Acid Volumes				Fracture Treatments						
There are no Acid Volume records to display.				14 STAGES - 192,663 BTW, 828,200 POUNDS 100 MESH, 3,548,843 POUNDS 40/70						

Formation	Top
WOODFORD	7479

Were open hole logs run? No

Date last log run:

Were unusual drilling circumstances encountered? No

Explanation:

Other Remarks
IRREGULAR SECTION

Lateral Holes
Sec: 9 TWP: 5S RGE: 6E County: MARSHALL
NE NW NW NE
47 FNL 2154 FEL of 1/4 SEC
Depth of Deviation: 7000 Radius of Turn: 2024 Direction: 353 Total Length: 5530
Measured Total Depth: 12961 True Vertical Depth: 7614 End Pt. Location From Release, Unit or Property Line: 47

FOR COMMISSION USE ONLY
Status: Accepted
1123232

PLEASE TYPE OR USE BLACK INK ONLY
FORMATION RECORD

Give formation names and tops, if available, or descriptions and thickness of formations drilled through. Show intervals cored or drillstem tested.

LEASE NAME

VERONICA

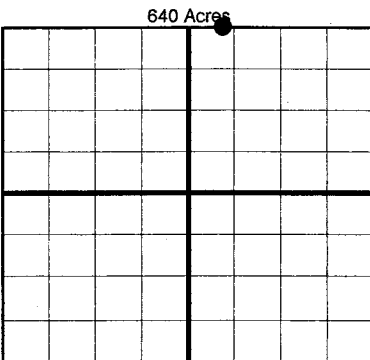
WELL NO. 4-16H9

NAMES OF FORMATIONS	TOP
WOODFORD	7479'

FOR COMMISSION USE ONLY	
ITD on file	<input type="checkbox"/> YES <input type="checkbox"/> NO
APPROVED	DISAPPROVED
2) Reject Codes	

Were open hole logs run?	yes	<input checked="" type="checkbox"/>	no	<input type="checkbox"/>
Date Last log was run				
Was CO ₂ encountered?	yes	<input checked="" type="checkbox"/>	no	at what depths?
Was H ₂ S encountered?	yes	<input checked="" type="checkbox"/>	no	at what depths?
Were unusual drilling circumstances encountered?	yes	<input checked="" type="checkbox"/>	no	<input type="checkbox"/>
If yes, briefly explain.				

Other remarks: **IRREGULAR SECTION**



BOTTOM HOLE LOCATION FOR DIRECTIONAL HOLE

SEC	TWP	RGE	COUNTY				
Spot Location	1/4	1/4	1/4	1/4	Feet From 1/4 Sec Lines	FSL	FWL
Measured Total Depth	True Vertical Depth		BHL From Lease, Unit, or Property Line:				

BOTTOM HOLE LOCATION FOR HORIZONTAL HOLE: (LATERALS)

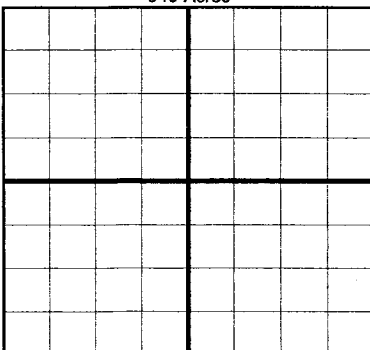
LATERAL #1

SEC	TWP	RGE	COUNTY				
9	5S	6E	MARSHALL				
Spot Location	NE 1/4	NW 1/4	NE 1/4	47' FNL	2154' FEL		
Depth of Deviation	7000'	Radius of Turn	2024'	Direction	353°	Total Length	5530'
Measured Total Depth	True Vertical Depth		End Pt Location From Lease, Unit or Property Line:				
12,961'	7613'		47' FNL & 2154' FEL				

If more than three drainholes are proposed, attach a separate sheet indicating the necessary information.

Direction must be stated in degrees azimuth. Please note, the horizontal drainhole and its end point must be located within the boundaries of the lease or spacing unit.

Directional surveys are required for all drainholes and directional wells.



LATERAL #2

SEC	TWP	RGE	COUNTY				
Spot Location	1/4	1/4	1/4	1/4	Feet From 1/4 Sec Lines	FSL	FWL
Depth of Deviation	Radius of Turn		Direction		Total Length		
Measured Total Depth	True Vertical Depth		End Pt Location From Lease, Unit or Property Line:				

LATERAL #3

SEC	TWP	RGE	COUNTY				
Spot Location	1/4	1/4	1/4	1/4	Feet From 1/4 Sec Lines	FSL	FWL
Depth of Deviation	Radius of Turn		Direction		Total Length		
Measured Total Depth	True Vertical Depth		End Pt Location From Lease, Unit or Property Line:				

TOPOGRAPHIC LAND SURVEYORS OF OKLAHOMA
 6709 NORTH CLASSEN BLVD., OKLA. CITY, OKLA. 73116 • LOCAL (405) 843-4847 • OUT OF STATE (800) 654-3219
 Certificate of Authorization No. 1293

MARSHALL

County, Oklahoma

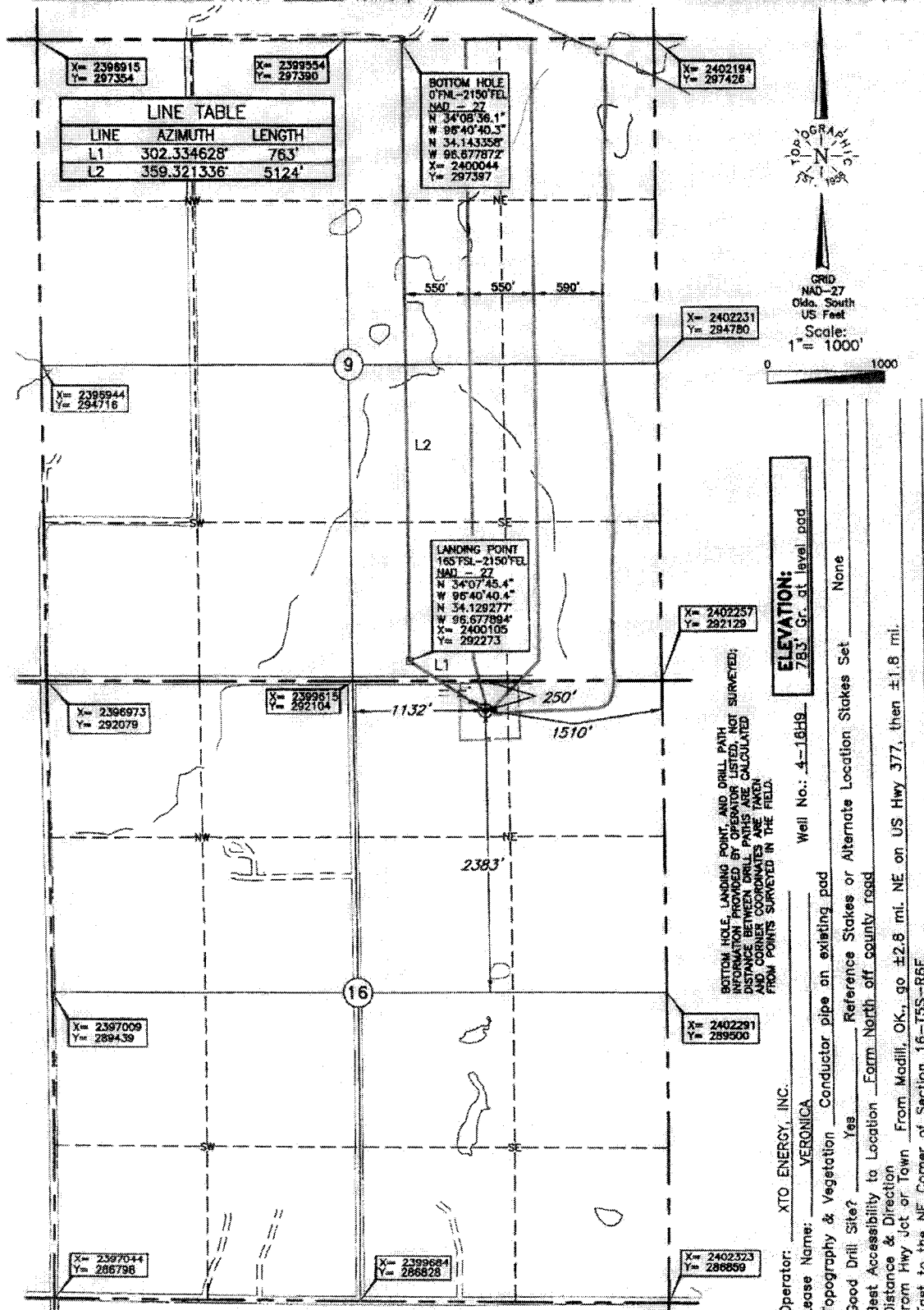
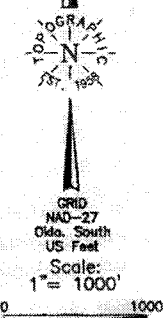
250' FNL - 1510' FEL Section 16 Township 5S Range 6E I.M.

- LEGEND:**
 ○ PROPOSED SURFACE HOLE (PSHL)
 ⊙ CONDUCTOR PIPE (CP)
 ⊕ EXISTING WELLHEAD/PRODUCTION WELL
 ✕ PLUGGED & ABANDONED WELL
 ✖ PER OCGO RECORDS
 □ PROPOSED LANDING POINT (LP)
 ⊖ PROPOSED BOTTOM HOLE (BHL)
 --- PROPOSED OTHER LATERAL LINES (PLL)

LINE TABLE		
LINE	AZIMUTH	LENGTH
L1	302.334628°	763'
L2	359.321336°	5124'

BOTTOM HOLE
 0' FNL - 2150' FEL
 NAD - 27
 N 34°08'36.1"
 W 96°40'40.3"
 N 34.143358°
 W 96.677372°
 X = 2400044
 Y = 297387

LANDING POINT
 165' FSL - 2150' FEL
 NAD - 27
 N 34°07'45.4"
 W 96°40'40.4"
 N 34.128277°
 W 96.677894°
 X = 2400105
 Y = 292273



ELEVATION:
 783' Gr. at level pad

Well No.: 4-1649

Operator: XTO ENERGY, INC.
 Lease Name: VERONICA

Topography & Vegetation: Conductor pipe on existing pad
 Good Drill Site? Yes
 Best Accessibility to Location: Reference Stakes or Alternate Location Stakes Set
 Distance & Direction: Farm North of county road
 from Hwy Jct or Town: From Madill, OK, go ±2.8 mi. NE on US Hwy 377, then ±1.8 mi. East to the NE Corner of Section 16-T5S-R6E

BOTTOM HOLE, LANDING POINT, AND DRILL PATH INFORMATION PROVIDED BY OPERATOR LISTED, NOT SURVEYED; DISTANCE BETWEEN DRILL PATHS AND CORNER COORDINATES CALCULATED FROM POINTS SURVEYED IN THE FIELD.

The following information was gathered using a GPS receiver Accuracy: Sub-Meters.

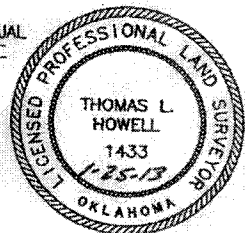
DATUM: NAD-27
 LAT: 34°07'41.3"N
 LONG: 96°40'32.8"W
 LAT: 34.128132°N
 LONG: 96.675780°W

STATE PLANE COORDINATES:
 ZONE: OK SOUTH
 X: 2400750
 Y: 291865

Date Drawn: Jan. 21, 2013
 Invoice # 195450R Date Staked: Jan. 16, 2013 JAL

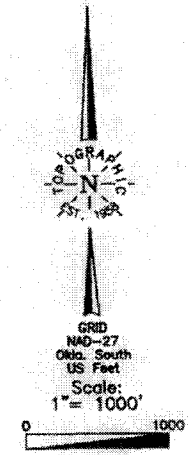
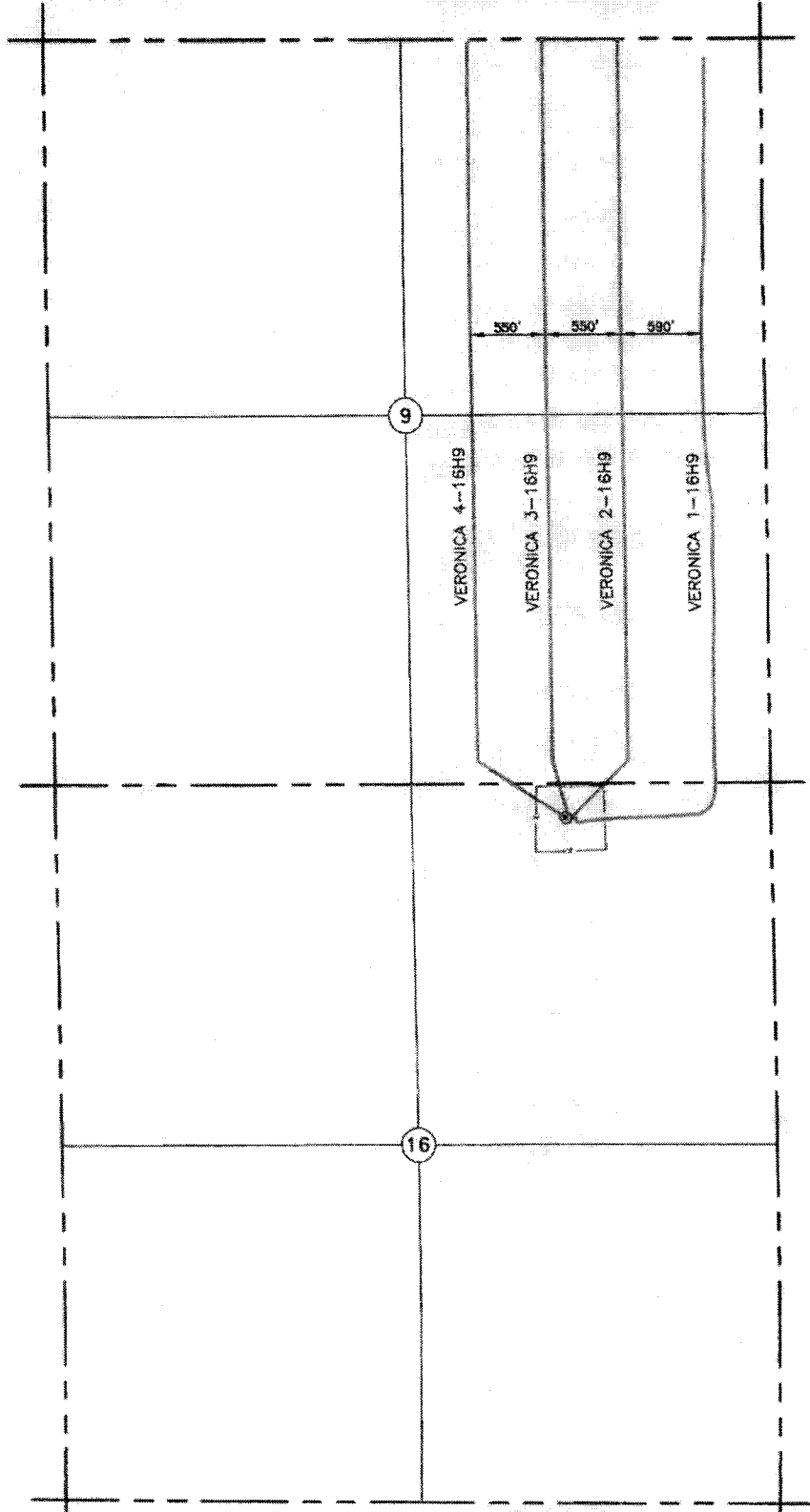
CERTIFICATE:
 I, Thomas L. Howell, a Oklahoma Licensed Land Surveyor and an authorized agent of Topographic Land Surveyors of Oklahoma, do hereby certify that the above described well location was surveyed and staked on the ground as shown herein.

Thomas L. Howell
 Oklahoma Lic. No. 1433



- LEGEND:**
 ○ PROPOSED SURFACE HOLE (PSHL)
 ⊙ CONDUCTOR PIPE (CP)
 ⊕ EXISTING WELLHEAD/PRODUCTION WELL
 ✕ PLUGGED & ABANDONED WELL
 ✱ PEX OCELO RECORDS
 □ PROPOSED LANDING POINT (LP)
 ✕ PROPOSED BOTTOM HOLE (PBHL)
 --- PROPOSED OTHER LATERAL LINES (PLL)

MARSHALL County, Oklahoma
 250' E 1/4 - 1510' E 1/4 Section 16 Township 5S Range 6E 1.M.



Invoice # 195450B Date Drawn: Jan. 21, 2013
 Date Staked: Jan. 16, 2013 JAL

Operator: XTO ENERGY, INC.
 Lease Name: VERONICA

Well No.: 4-16H9
ELEVATION:
 783' Gr. at Stake