

Oklahoma Corporation Commission  
 Oil & Gas Conservation Division  
 Post Office Box 52000  
 Oklahoma City, Oklahoma 73152-2000  
 Rule 165: 10-3-25

Form 1002A

API No.: 35095205670001

**Completion Report**

Spud Date: July 27, 2011

OTC Prod. Unit No.: 095-212117

Drilling Finished Date: August 07, 2013

1st Prod Date: January 24, 2014

**Amended**

Completion Date: December 16, 2013

Amend Reason: FINISH DRILLING AND COMPLETING WELL

**Drill Type: HORIZONTAL HOLE**

Well Name: VERONICA (VERONICA 3-9H) 3-16H9

Purchaser/Measurer:

Location: MARSHALL 16 5S 6E  
 NE NE NW NE  
 250 FNL 1490 FEL of 1/4 SEC  
 Derrick Elevation: 0 Ground Elevation: 784

First Sales Date:

Operator: XTO ENERGY INC 21003

810 HOUSTON ST  
 FORT WORTH, TX 76102-6203

Completion Type	
X	Single Zone
	Multiple Zone
	Commingled

Location Exception	
Order No	
	585117
	621099

Increased Density	
Order No	
	585016

Casing and Cement							
Type	Size	Weight	Grade	Feet	PSI	SAX	Top of CMT
CONDUCTOR	16	55	J-55	75		11	SURFACE
SURFACE	9 5/8	36	K-55	1013		340	SURFACE
PRODUCTION	5 1/2	20, 23	P-110	12788		1310	4414

Liner								
Type	Size	Weight	Grade	Length	PSI	SAX	Top Depth	Bottom Depth
There are no Liner records to display.								

**Total Depth: 12788**

Packer	
Depth	Brand & Type
There are no Packer records to display.	

Plug	
Depth	Plug Type
There are no Plug records to display.	

Initial Test Data										
Test Date	Formation	Oil BBL/Day	Oil-Gravity (API)	Gas MCF/Day	Gas-Oil Ratio Cu FT/BBL	Water BBL/Day	Pumpin or Flowing	Initial Shut-In Pressure	Choke Size	Flow Tubing Pressure
Feb 18, 2014	WOODFORD	100	38	722	7220	364	FLOWING	600	OPEN	230

Completion and Test Data by Producing Formation										
Formation Name: WOODFORD			Code: 319WDFD			Class: OIL				
<b>Spacing Orders</b>				<b>Perforated Intervals</b>						
<b>Order No</b>	<b>Unit Size</b>			<b>From</b>			<b>To</b>			
584675	640			7600			12650			
<b>Acid Volumes</b>				<b>Fracture Treatments</b>						
There are no Acid Volume records to display.				14 STAGES - 191,938 BTW, 826,878 POUNDS 100 MESH, 3,545,337 POUNDS 40/70						

Formation	Top
WOODFORD	7293

Were open hole logs run? No

Date last log run:

Were unusual drilling circumstances encountered? No

Explanation:

Other Remarks
IRREGULAR SECTION

Lateral Holes
Sec: 9 TWP: 5S RGE: 6E County: MARSHALL
NE NE NW NE
44 FNL 1597 FEL of 1/4 SEC
Depth of Deviation: 7000 Radius of Turn: 1935 Direction: 359 Total Length: 5498
Measured Total Depth: 12788 True Vertical Depth: 7641 End Pt. Location From Release, Unit or Property Line: 44

FOR COMMISSION USE ONLY
Status: Accepted
1123231

API NO. 095-20567  
 OTC PROD. UNIT NO. 095-212117

PLEASE TYPE OR USE BLACK INK  
 NOTE: Attach copy of original 1002A if recom

**AS SUBMITTED**

Form 1002A Rev. 2007

FEB 20 2014

OKLAHOMA CORPORATION COMMISSION

ORIGINAL  
 AMENDED  
 Reason Amended *Finish Drilling*

TYPE OF DRILLING OPERATION  
 STRAIGHT HOLE  DIRECTIONAL HOLE  HORIZONTAL HOLE

SPUD DATE 7/27/2011  
 DRLG FINISHED 8/7/2013

County: Marshall SEC: 16 TWP: 5S RGE: 6E  
 LEASE NAME: Veronica WELL NO.: 3-16H9  
 SHL: NE 1/4 NE 1/4 NW 1/4 NE 1/4 250' 1490'  
 ELEVATION: Derrick Ft GL: 784' Ground Latitude if Known: 34.128131°N Longitude if Known: 96.675714°W  
 OPERATOR NAME: XTO ENERGY INC. OTC/OCC OPERATOR NO.: 21003  
 ADDRESS: 210 PARK AVENUE, SUITE 2350  
 CITY: OKLAHOMA CITY STATE: OKLAHOMA ZIP: 73102

WELL COMPLETION 12/16/2013  
 1ST PROD DATE 1/24/2014  
 RECOMP DATE

LOCATE WELL


COMPLETION TYPE  
 SINGLE ZONE  
 MULTIPLE ZONE  
 Application Date  
 COMMINGLED  
 Application Date  
 LOCATION EXCEPTION ORDER NO. 585117  
 INCREASED DENSITY ORDER NO. 585016

CASING & CEMENT (Form 1002C must be attached)

TYPE	SIZE	WEIGHT	GRADE	FEET	PSI	SAX	TOP OF CMI
Conductor	16"	55	J-55	75			Surface
Surface	9 5/8"	36	K-55	1010		340	Surface
Intermediate							
Production	5 1/2"	20,23	P-110	12,788'		1310	4414
Liner							
PACKER @ _____ BRAND & TYPE _____ PLUG @ _____ TYPE _____ PLUG @ _____ TYPE _____ TOTAL DEPTH							12,788'

COMPLETION & TEST DATA BY PRODUCING FORMATION

*319 WDFD*

FORMATION	WOODFORD						
SPACING & SPACING ORDER NUMBER	640: 584675						
CLASS: Oil, Gas, Dry, Inj, Disp, Comm Disp, Svc	Oil						
PERFORATED INTERVALS	14 Stages 7600-12,650'						
ACID/VOLUME Fracture Treatment (Fluids/Prop Amounts)	0 acid 191,938 BTW 826,878# 100 Mesh 3,545,337# 40/70						

Request minimum gas allowable (165:10-17-7) Gas Purchaser/Measurer \_\_\_\_\_ 1st Sales Date \_\_\_\_\_

INITIAL TEST DATA

INITIAL TEST DATE	2/18/2014				
OIL-BBL/DAY	100				
OIL-GRAVITY ( API)	38				
GAS-MCF/DAY	722				
GAS-OIL RATIO CU FT/BBL	7220				
WATER-BBL/DAY	364				
PUMPING OR FLOWING	Flowing				
INITIAL SHUT-IN PRESSURE	600				
CHOKE SIZE	Open				
FLOW TUBING PRESSURE	230				

A record of the formations drilled through, and pertinent remarks are presented on the reverse. I declare that I have knowledge of the contents of this report and am authorized by my organization to make this report, which was prepared by me or under my supervision and direction, with the data and facts stated herein to be true, correct, and complete to the best of my knowledge and belief.

SIGNATURE: *Debbie Waggoner* NAME (PRINT OR TYPE): Debbie Waggoner, Regulatory Analyst DATE: 2/19/2014 PHONE NUMBER: 405-232-4011  
 ADDRESS: 210 Park Avenue, Suite 2350 CITY: Oklahoma CITY STATE: Oklahoma ZIP: 73102 EMAIL ADDRESS: debbie.waggoner@xtoenergy.com

**PLEASE TYPE OR USE BLACK INK ONLY**  
**FORMATION RECORD**

Give formation names and tops, if available, or descriptions and thickness of formations drilled through. Show intervals cored or drillstem tested.

LEASE NAME

**VERONICA**

WELL NO. **3-16H9**

NAMES OF FORMATIONS	TOP
WOODFORD	7293'

FOR COMMISSION USE ONLY

ITD on file  YES  NO

APPROVED \_\_\_\_\_ DISAPPROVED \_\_\_\_\_

2) Reject Codes

\_\_\_\_\_

\_\_\_\_\_

\_\_\_\_\_

\_\_\_\_\_

Were open hole logs run?                      yes  no

Date Last log was run \_\_\_\_\_

Was CO<sub>2</sub> encountered?                      yes  no at what depths? \_\_\_\_\_

Was H<sub>2</sub>S encountered?                      yes  no at what depths? \_\_\_\_\_

Were unusual drilling circumstances encountered?                      yes  no

If yes, briefly explain. \_\_\_\_\_

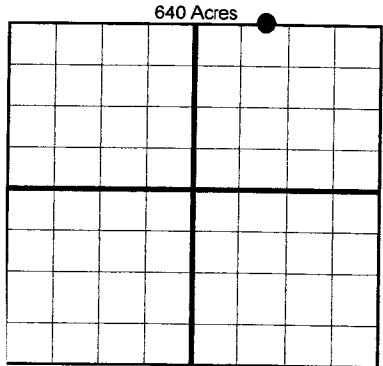
Other remarks: **IRREGULAR SECTION**

\_\_\_\_\_

\_\_\_\_\_

\_\_\_\_\_

\_\_\_\_\_



**BOTTOM HOLE LOCATION FOR DIRECTIONAL HOLE**

SEC	TWP	RGE	COUNTY
Spot Location	Feet From 1/4 Sec Lines		
1/4                      1/4                      1/4                      1/4	FSL	FWL	
Measured Total Depth	True Vertical Depth	BHL From Lease, Unit, or Property Line:	

**BOTTOM HOLE LOCATION FOR HORIZONTAL HOLE: (LATERALS)**

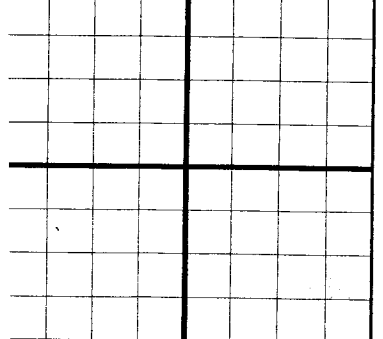
**LATERAL #1**

SEC	TWP	RGE	COUNTY
9	5S	6E	Marshall
Spot Location	Feet From 1/4 Sec Lines		
NE 1/4                      NE 1/4                      NW 1/4                      NE 1/4	44' FNL	1597' FEL	
Depth of Deviation	Radius of Turn	Direction	Total Length
7000'	1935'	359°	5498'
Measured Total Depth	True Vertical Depth	End Pt Location From Lease, Unit or Property Line:	
12,788'	7641'	44' FNL & 1597' FEL	

If more than three drainholes are proposed, attach a separate sheet indicating the necessary information.

Direction must be stated in degrees azimuth. Please note, the horizontal drainhole and its end point must be located within the boundaries of the lease or spacing unit.

**Directional surveys are required for all drainholes and directional wells.**



**LATERAL #2**

SEC	TWP	RGE	COUNTY
Spot Location	Feet From 1/4 Sec Lines		
1/4                      1/4                      1/4                      1/4	FSL	FWL	
Depth of Deviation	Radius of Turn	Direction	Total Length
Measured Total Depth	True Vertical Depth	End Pt Location From Lease, Unit or Property Line:	

**LATERAL #3**

SEC	TWP	RGE	COUNTY
Spot Location	Feet From 1/4 Sec Lines		
1/4                      1/4                      1/4                      1/4	FSL	FWL	
Depth of Deviation	Radius of Turn	Direction	Total Length
Measured Total Depth	True Vertical Depth	End Pt Location From Lease, Unit or Property Line:	