

Oklahoma Corporation Commission
Oil & Gas Conservation Division
Post Office Box 52000
Oklahoma City, Oklahoma 73152-2000
Rule 165: 10-3-25

Form 1002A

API No.: 35095206120001

Completion Report

Spud Date: March 30, 2013

OTC Prod. Unit No.: 095-212120

Drilling Finished Date: July 09, 2013

1st Prod Date: January 06, 2014

Completion Date: January 03, 2014

Drill Type: HORIZONTAL HOLE

Well Name: VERONICA 7-16H9

Purchaser/Measurer:

Location: MARSHALL 16 5S 6E
NE NE NW NW
268 FNL 1120 FWL of 1/4 SEC
Derrick Elevation: 0 Ground Elevation: 763

First Sales Date:

Operator: XTO ENERGY INC 21003

810 HOUSTON ST
FORT WORTH, TX 76102-6203

Completion Type	
X	Single Zone
	Multiple Zone
	Commingled

Location Exception	
Order No	
	610081
	610170
	621681

Increased Density	
Order No	
	610082

Casing and Cement							
Type	Size	Weight	Grade	Feet	PSI	SAX	Top of CMT
CONDUCTOR	16	75	J-55	80		12	SURFACE
SURFACE	9 5/8	36	J-55	1061		410	SURFACE
PRODUCTION	5 1/2	20	P-110	13014		1350	6020

Liner								
Type	Size	Weight	Grade	Length	PSI	SAX	Top Depth	Bottom Depth
There are no Liner records to display.								

Total Depth: 13020

Packer	
Depth	Brand & Type
There are no Packer records to display.	

Plug	
Depth	Plug Type
There are no Plug records to display.	

Initial Test Data										
Test Date	Formation	Oil BBL/Day	Oil-Gravity (API)	Gas MCF/Day	Gas-Oil Ratio Cu FT/BBL	Water BBL/Day	Pumpin or Flowing	Initial Shut-In Pressure	Choke Size	Flow Tubing Pressure
Feb 04, 2014	WOODFORD	306	38	1225	4003	681	FLOWING	340	OPEN	240

Completion and Test Data by Producing Formation										
Formation Name: WOODFORD			Code: 319WDFD			Class: OIL				
Spacing Orders				Perforated Intervals						
Order No	Unit Size			From			To			
584675	640			7850			12850			
Acid Volumes				Fracture Treatments						
There are no Acid Volume records to display.				14 STAGES - 194,026 BTW, 828,000 POUNDS 100 MESH, 3,536,210 POUNDS 40/70						

Formation	Top
WOODFORD	7760

Were open hole logs run? No

Date last log run:

Were unusual drilling circumstances encountered? No

Explanation:

Other Remarks
IRREGULAR SECTION

Lateral Holes
Sec: 9 TWP: 5S RGE: 6E County: MARSHALL
NW NW NE NW
37 FNL 1482 FWL of 1/4 SEC
Depth of Deviation: 7279 Radius of Turn: 1670 Direction: 4 Total Length: 5524
Measured Total Depth: 13020 True Vertical Depth: 7760 End Pt. Location From Release, Unit or Property Line: 37

FOR COMMISSION USE ONLY
Status: Accepted
1123085

API NO. 095-20612
OTC PROD. UNIT NO. 095-212120

PLEASE TYPE OR USE BLACK INK ON NOTE:
Attach copy of original 1002A if recompleting



FEB 10 2014

OKLAHOMA CORPORATION COMMISSION

ORIGINAL
 AMENDED
Reason Amended

TYPE OF DRILLING OPERATION
 STRAIGHT HOLE DIRECTIONAL HOLE HORIZONTAL HOLE

SPUD DATE 3/30/2013
DRLG FINISHED 7/9/2013

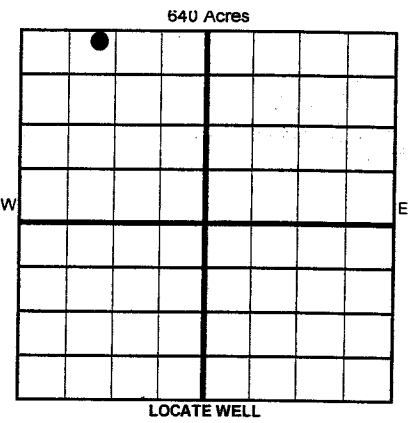
If directional or horizontal, see reverse for bottom hole location.

COUNTY Marshall SEC 16 TWP 5S RGE 6E
LEASE NAME Veronica WELL NO. 7-16H9
SHL NE 1/4 NE 1/4 NW 1/4 NW 1/4 FNL FWL OF 1/4 SE 268' 1120'

WELL COMPLETION 1/3/2014
1ST PROD DATE 1/6/2014
RECOMP DATE

ELEVATION Derrick Fl GL: 763' Ground Latitude if Known N34.128205° Longitude if Known W96.684828°

OPERATOR NAME XTO ENERGY INC. OTC/OCC OPERATOR NO. 21003
ADDRESS 210 PARK AVENUE, SUITE 2350
CITY OKLAHOMA CITY STATE OKLAHOMA ZIP 73102



COMPLETION TYPE
 SINGLE ZONE
 MULTIPLE ZONE
Application Date
 COMMINGLED
Application Date
LOCATION EXCEPTION ORDER NO. 610170, 610081
INCREASED DENSITY ORDER NO. 610082

CASING & CEMENT (Form 1002C must be attached)

TYPE	SIZE	WEIGHT	GRADE	FEET	PSI	SAX	TOP OF CMI
Conductor	16"	75	J-55	80			Surface
Surface	9 5/8"	36	J-55	2020		410	Surface
Intermediate							
Production							
Liner	5 1/2"	20	P-110	13,010		1350	6020'
				TOTAL DEPTH		13,020'	

PACKER @ _____ BRAND & TYPE _____ PLUG @ _____ TYPE _____ PLUG @ _____ TYPE _____
PACKER @ _____ BRAND & TYPE _____ PLUG @ _____ TYPE _____ PLUG @ _____ TYPE _____

COMPLETION & TEST DATA BY PRODUCING FORMATION *319 WDFD*

FORMATION	WOODFORD						
SPACING & SPACING ORDER NUMBER	640: 584675						<i>Reported to Frac Facets</i>
CLASS: Oil, Gas, Dry, Inj., Disp, Comm Disp, Svc	Oil						
PERFORATED INTERVALS	14 Stages 7852-12,850'						
ACID/VOLUME Fracture Treatment (Fluids/Prop Amounts)	0 acid 194,026 BTW 828,000# 100 Mesh 3,536,210# 40/70						

Request minimum gas allowable (165:10-17-7) Gas Purchaser/Measurer _____ 1st Sales Date _____

INITIAL TEST DATA

INITIAL TEST DATE	2/4/2014				
OIL-BBL/DAY	306				
OIL-GRAVITY (API)	38				
GAS-MCF/DAY	1225				
GAS-OIL RATIO CU FT/BBL	4003				
WATER-BBL/DAY	681				
PUMPING OR FLOWING	Flowing				
INITIAL SHUT-IN PRESSURE	340				
CHOKE SIZE	Open				
FLOW TUBING PRESSURE	240				

A record of the formations drilled through, and pertinent remarks are presented on the reverse. I declare that I have knowledge of the contents of this report and am authorized by my organization to make this report, which was prepared by me or under my supervision and direction, with the data and facts stated herein to be true, correct, and complete to the best of my knowledge and belief.

Debbie Waggoner SIGNATURE
Debbie Waggoner, Regulatory Analyst NAME (PRINT OR TYPE)
2/5/2014 DATE
405-232-4011 PHONE NUMBER
210 Park Avenue, Suite 2350 ADDRESS
Oklahoma City CITY
Oklahoma STATE
73102 ZIP
debbie.waggoner@xtoenergy.com EMAIL ADDRESS

VERONICA 7-16H9

SECTION 16
TOWNSHIP 5 SOUTH, RANGE 6 EAST
MARSHALL COUNTY, OKLAHOMA

OPERATOR:



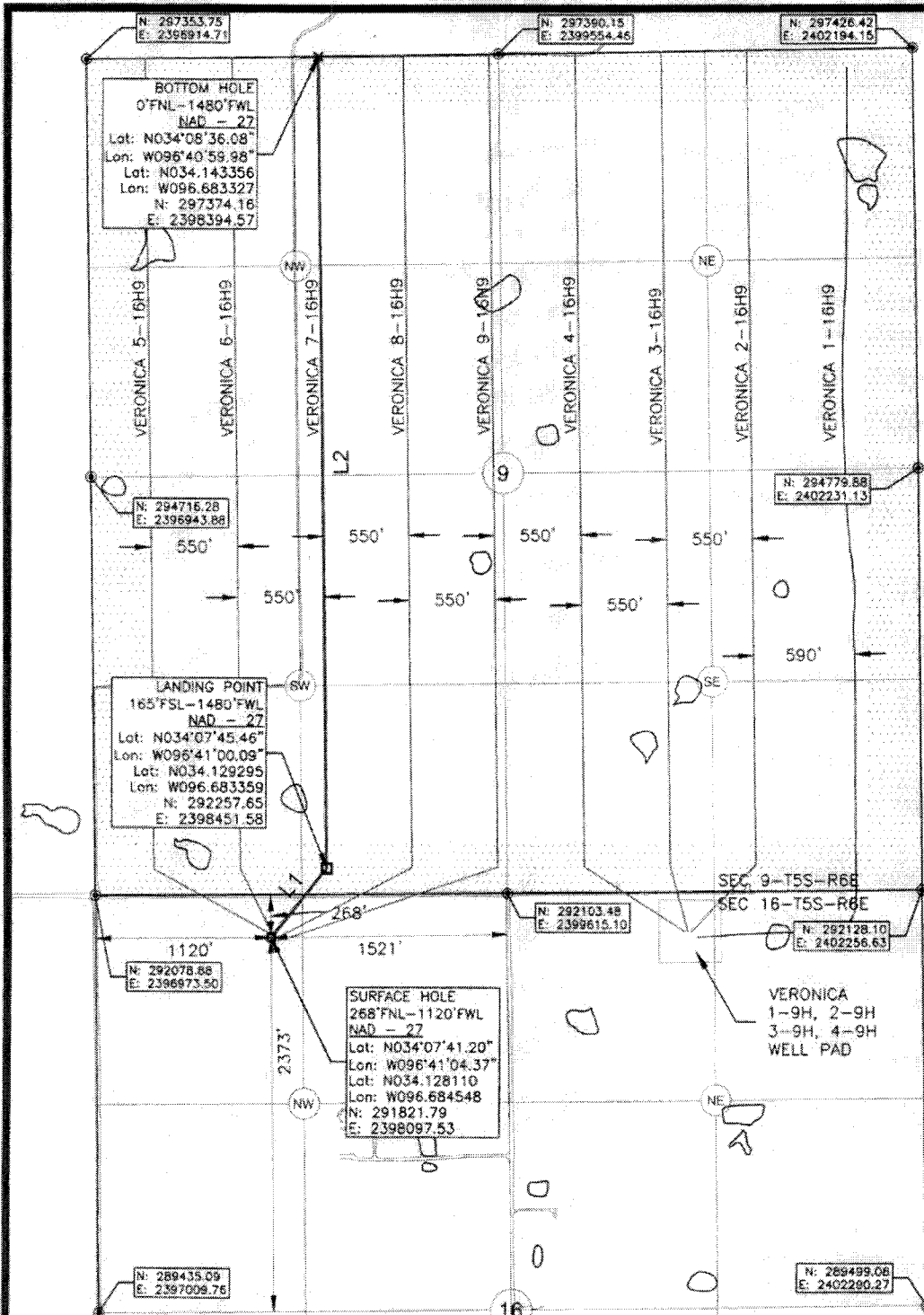
LEGEND:

- EXISTING WELL HEAD/PRODUCTION WELL
- PROPOSED SURFACE HOLE (PSHL)
- SECTION CORNER
- PROPOSED LANDING POINT (LP)
- PROPOSED BOTTOM HOLE (PBHL)
- EXISTING WELL BORE
- PROPOSED WELL BORE
- SUBJECT WELL BORE
- DRILLING UNIT

Line Table		
Line #	Azimuth	Length
L1	039.087107	561.54
L2	359.361601	5116.82



NOTES:
1. This survey does not represent a boundary survey. It is for Geographical Information Systems (GIS) purposes only as instructed by the client and is not to be relied upon for the establishment of fences, buildings or other further improvement lines. Positions were taken with Survey Grade RTK GPS and NGS OPUS processed control using the NAD02 Oklahoma South State Plane Coordinate System.
2. Bottom hole information provided by operator listed, not surveyed and corner coordinates are taken from points surveyed in field.



Surface Hole Location: 268' From North Line Section 16
1120' From West Line Section 16

Latitude: N34.128110° (NAD 27)
Longitude: W96.684548° (NAD 27)
Latitude: N34.128205° (NAD 83)
Longitude: W96.684828° (NAD 83)

Ground Elev: 763.4

Landing Point Location: 165' From South Line of Section 9
1480' From West Line of Section 9

Bottom Hole Location: 0' From North Line Section 9
1480' From West Line Section 9

Drilling Unit: Section 9, T5S, R6E

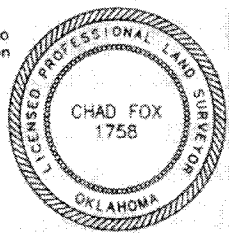
Operator: XTO Energy, Inc.

Best Accessibility to Location: From North

Distance & Direction from Hwy Jct or Town:
From Madill, Ok. go 3.9mi. Northeast on St Hwy 99, then 2.2mi. East on Jagger Rd. to well location on South Side of Road.

I, Chad Fox, a duly registered Professional Land Surveyor in the State of OKLAHOMA, do hereby certify that the drawing shown hereon was completed and represents a good and accurate survey made upon the ground by me or under my direct supervision.

CHAD FOX P.L.S. NO. 1758
C.O.A. NO. 6186 EX. DATE: 31JAN14



CDF AND ASSOCIATES, LLC.
404 Coggins Ave. Poteau, OK 74953 (918) 721-1262
Certificate of Authorization No. 6186

JOB NO: XTO/WP13/VERONICA 7-16H9 DRAWN BY: LD
DATE: 11/MAR/13 REV: B SCALE: 1" = 1,000' SHT NO. 1