

Oklahoma Corporation Commission
Oil & Gas Conservation Division
Post Office Box 52000
Oklahoma City, Oklahoma 73152-2000
Rule 165: 10-3-25

Form 1002A

API No.: 35019078240002

Completion Report

Spud Date: November 25, 1923

OTC Prod. Unit No.:

Drilling Finished Date: November 24, 1923

Amended

1st Prod Date: March 11, 1924

Amend Reason: RETURNED TO INJECTION / CORRECT FOOTAGE AND SPOT CALL

Completion Date: March 11, 1924

Recomplete Date: January 08, 2014

Drill Type: STRAIGHT HOLE

SERVICE WELL

Well Name: GRAHAM DEESE UNIT (APCO-HOLMAN 2B) 20-2B

Purchaser/Measurer:

Location: CARTER 25 2S 3W
S2 NW NW NE
2220 FSL 330 FWL of 1/4 SEC
Derrick Elevation: 0 Ground Elevation: 990

First Sales Date:

Operator: CITATION OIL & GAS CORPORATION 14156
PO BOX 690688
14077 CUTTEN RD
HOUSTON, TX 77269-0688

Completion Type	
X	Single Zone
	Multiple Zone
	Commingled

Location Exception
Order No
There are no Location Exception records to display.

Increased Density
Order No
There are no Increased Density records to display.

Casing and Cement							
Type	Size	Weight	Grade	Feet	PSI	SAX	Top of CMT
CONDUCTOR	12 1/2			53		75	SURFACE
INTERMEDIATE	8 1/4			2155		200	SURFACE
PRODUCTION	5 1/4			2687		100	SURFACE

Liner								
Type	Size	Weight	Grade	Length	PSI	SAX	Top Depth	Bottom Depth
LINER	6 5/8			259	0	0	2127	2386

Total Depth: 2687

Packer	
Depth	Brand & Type
1778	PACKER

Plug	
Depth	Plug Type
There are no Plug records to display.	

Initial Test Data										
Test Date	Formation	Oil BBL/Day	Oil-Gravity (API)	Gas MCF/Day	Gas-Oil Ratio Cu FT/BBL	Water BBL/Day	Pumpin or Flowing	Initial Shut-In Pressure	Choke Size	Flow Tubing Pressure
There are no Initial Data records to display.										

Completion and Test Data by Producing Formation										
Formation Name: DEESE			Code: 404DEESS				Class: INJ			
Spacing Orders					Perforated Intervals					
Order No		Unit Size			From			To		
There are no Spacing Order records to display.					1848			2619		
Acid Volumes					Fracture Treatments					
There are no Acid Volume records to display.					There are no Fracture Treatments records to display.					

Formation	Top
DEESE	1848

Were open hole logs run? No
Date last log run:

Were unusual drilling circumstances encountered? No
Explanation:

Other Remarks
SEE AS SUBMITTED COPY. OCC - UIC ORDER NUMBER 187652

FOR COMMISSION USE ONLY	
Status: Accepted	1122699

AS SUBMITTED

RECEIVED

Form 1002A
Rev. 2009

JAN 13 2014

API NO. 35-019-07824
OTC PROD. UNIT NO.PLEASE TYPE OR USE BLACK INK ONLY
NOTE: Attach copy of original 1002A if recompletion or reentryOKLAHOMA CORPORATION COMMISSION
Oil & Gas Conservation Division
Post Office Box 52000
Oklahoma City, Oklahoma 73152-2000
Rule 165:10-3-25

OKLAHOMA CORPORATION COMMISSION

640 Acres

 ORIGINAL
 AMENDED
Reason Amended Returned to Injection / Correct Footage & Spot Call

COMPLETION REPORT

TYPE OF DRILLING OPERATION
 STRAIGHT HOLE DIRECTIONAL HOLE HORIZONTAL HOLE
 SERVICE WELL
If directional or horizontal, see reverse for bottom hole location.SPUD DATE 11-25-23 Unknown-
DRLG FINISHED DATE 11-29-23 Unknown-
WELL COMPLETION DATE 3-11-24 10/02/1973

COUNTY Carter SEC 25 TWP 2S RGE 3W

WELL NO. 20-2B 1ST PROD DATE 3-11-24 Unknown

LEASE NAME Graham Deese

FSL 2220 2310 FWL OF 1/4 SEC 330

RECOMP DATE 01/08/2014

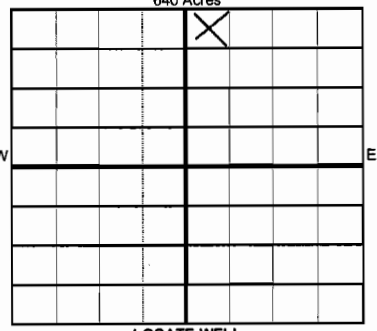
ELEVATION Derrick FL Ground 990' Latitude if Known

Longitude if Known

OPERATOR NAME Citation Oil & Gas Corp. OTC/OCC OPERATOR NO. 14156

ADDRESS P.O. Box 690688

CITY Houston STATE TX ZIP 77269



LOCATE WELL

COMPLETION TYPE

SINGLE ZONE

MULTIPLE ZONE

Application Date

COMMINGLED

Application Date

LOCATION EXCEPTION ORDER NO.

INCREASED DENSITY ORDER NO.

CASING & CEMENT (Form 1002C must be attached)

TYPE	SIZE	WEIGHT	GRADE	FEET	PSI	SAX	TOP OF CMT
Conductor	12 1/2			53			
Surface	18 1/4			2155		200	
Intermediate							
Production	5-1 1/4" 45			2059 2687		100	
Liner	6 5/8			2127-2386			

Using Original 1002A's

PACKER @ 1778 BRAND & TYPE PLUG @ TYPE PLUG @ TYPE TOTAL DEPTH 2687'

PACKER @ BRAND & TYPE PLUG @ TYPE PLUG @ TYPE

COMPLETION & TEST DATA BY PRODUCING FORMATION

404 DEESS

FORMATION	Deese				
SPACING & SPACING ORDER NUMBER					
CLASS: Oil, Gas, Dry, Inj, Disp, Comm Disp, Svc	Inj.				
PERFORATED INTERVALS	1848'-2619'				
ACID/VOLUME	N/A				
FRACTURE TREATMENT (Fluids/Prop Amounts)	N/A				

 Oil Allowable (165:10-13-3)
 Minimum Gas Allowable (165:10-17-7)
 Gas Purchaser/Measurer
 1st Sales Date

INITIAL TEST DATA

INITIAL TEST DATE	IR @ 502 bpd & 310# TP.			
OIL-BBL/DAY				
OIL-GRAVITY (API)				
GAS-MCF/DAY				
GAS-OIL RATIO CU FT/BBL				
WATER-BBL/DAY				
PUMPING OR FLOWING				
INITIAL SHUT-IN PRESSURE				
CHOKE SIZE				
FLOW TUBING PRESSURE				

A record of the formations drilled through, and pertinent remarks are presented on the reverse. I declare that I have knowledge of the contents of this report and am authorized by my organization to make this report, which was prepared by me or under my supervision and direction, with the data and facts stated herein to be true, correct, and complete to the best of my knowledge and belief.

Rena Schindewolf
 SIGNATURE: Rena Schindewolf / Completion Analyst
 NAME (PRINT OR TYPE): Rena Schindewolf / Completion Analyst
 DATE: 01/09/2014
 PHONE NUMBER: (281) 891-1585
 P.O. Box 690688 Houston Texas 77269 nschindewolf@cogc.com
 ADDRESS CITY STATE ZIP EMAIL ADDRESS

PLEASE TYPE OR USE BLACK INK ONLY
FORMATION RECORD

Give formation names and tops, if available, or descriptions and thickness of formation: drilled through. Show intervals cored or drillstem tested.

LEASE NAME Graham Deese

WELL NO. 20-2B

NAMES OF FORMATIONS	TOP
Deese	1848'

FOR COMMISSION USE ONLY

ITD on file YES NO

APPROVED _____ DISAPPROVED _____

2) Reject Codes

Were open hole logs run? yes no

Date Last log was run N/A

Was CO₂ encountered? yes no at what depths? _____

Was H₂S encountered? yes no at what depths? _____

Were unusual drilling circumstances encountered? yes no

If yes, briefly explain below

Other remarks: RU PT. Tested annulus to 300#, ok. POI @ 500 bpd & 350# TP. IR @ 502 bpd & 310# TP.

OCC - UIC order # 187652

640 Acres

If more than three drainholes are proposed, attach a separate sheet indicating the necessary information.

Direction must be stated in degrees azimuth. Please note, the horizontal drainhole and its end point must be located within the boundaries of the lease or spacing unit.

Directional surveys are required for all drainholes and directional wells.

640 Acres

BOTTOM HOLE LOCATION FOR DIRECTIONAL HOLE

SEC	TWP	RGE	COUNTY	Feet From 1/4 Sec Lines		FSL	FWL
Spot Location	1/4	1/4	1/4	1/4			
Measured Total Depth	True Vertical Depth		BHL From Lease, Unit, or Property Line				

BOTTOM HOLE LOCATION FOR HORIZONTAL HOLE: (LATERALS)

LATERAL #1

SEC	TWP	RGE	COUNTY	Feet From 1/4 Sec Lines		FSL	FWL
Spot Location	1/4	1/4	1/4	1/4			
Depth of Deviation	Radius of Turn		Direction	Total Length			
Measured Total Depth	True Vertical Depth		End Pt Location From Lease, Unit or Property Line				

LATERAL #2

SEC	TWP	RGE	COUNTY	Feet From 1/4 Sec Lines		FSL	FWL
Spot Location	1/4	1/4	1/4	1/4			
Depth of Deviation	Radius of Turn		Direction	Total Length			
Measured Total Depth	True Vertical Depth		End Pt Location From Lease, Unit or Property Line				

LATERAL #3

SEC	TWP	RGE	COUNTY	Feet From 1/4 Sec Lines		FSL	FWL
Spot Location	1/4	1/4	1/4	1/4			
Depth of Deviation	Radius of Turn		Direction	Total Length			
Measured Total Depth	True Vertical Depth		End Pt Location From Lease, Unit or Property Line				