

Oklahoma Corporation Commission
Oil & Gas Conservation Division
Post Office Box 52000
Oklahoma City, Oklahoma 73152-2000
Rule 165: 10-3-25

Form 1002A

API No.: 35003227430000

Completion Report

Spud Date: October 21, 2013

OTC Prod. Unit No.: 003212239

Drilling Finished Date: November 08, 2013

1st Prod Date: December 11, 2013

Completion Date: November 20, 2013

Drill Type: HORIZONTAL HOLE

Min Gas Allowable: Yes

Well Name: STANLEY 18-26-10 1H

Purchaser/Measurer: CHESAPEAKE OPERATING INC

Location: ALFALFA 7 26N 10W
S2 S2 SW SW
225 FSL 660 FWL of 1/4 SEC
Derrick Elevation: 1185 Ground Elevation: 1163

First Sales Date: 12/11/2013

Operator: CHESAPEAKE OPERATING INC 17441
PO BOX 18496
6100 N WESTERN AVE
OKLAHOMA CITY, OK 73154-0496

Completion Type	
X	Single Zone
	Multiple Zone
	Commingled

Location Exception
Order No
616217

Increased Density
Order No
There are no Increased Density records to display.

Casing and Cement							
Type	Size	Weight	Grade	Feet	PSI	SAX	Top of CMT
SURFACE	13 3/8	48	H-40	295		325	SURFACE
INTERMEDIATE	9 5/8	36	J-55	992		315	SURFACE
PRODUCTION	7	26	P-110EC	5701		290	2000

Liner								
Type	Size	Weight	Grade	Length	PSI	SAX	Top Depth	Bottom Depth
LINER	4 1/2	13.5	P-110EC	5593	0	580	4983	10576

Total Depth: 10576

Packer	
Depth	Brand & Type
4953	AS-3

Plug	
Depth	Plug Type
There are no Plug records to display.	

Initial Test Data										
Test Date	Formation	Oil BBL/Day	Oil-Gravity (API)	Gas MCF/Day	Gas-Oil Ratio Cu FT/BBL	Water BBL/Day	Pumpin or Flowing	Initial Shut-In Pressure	Choke Size	Flow Tubing Pressure
Dec 13, 2013	MISSISSIPPIAN	53	33.9	122	2302	3118	ARTIFICIA			71

Completion and Test Data by Producing Formation										
Formation Name: MISSISSIPPIAN			Code: 359MSSP			Class: OIL				
Spacing Orders				Perforated Intervals						
Order No	Unit Size			From			To			
596924	640			5700			10448			
Acid Volumes				Fracture Treatments						
18,000 GALLONS ACID				44,588 BARRELS FRAC FLUID, 374,247 POUNDS PROPPANT						

Formation	Top
MISSISSIPPIAN	5517

Were open hole logs run? No

Date last log run:

Were unusual drilling circumstances encountered? No

Explanation:

Other Remarks
OCC: FLE ORDER HAS NOT BEEN ISSUED. WE HAVE ACCEPTED OPERATORS DATA AS SUBMITTED. IRREGULAR SECTION.

Lateral Holes
Sec: 18 TWP: 26N RGE: 10W County: ALFALFA
S2 S2 SW SW
216 FSL 660 FWL of 1/4 SEC
Depth of Deviation: 5109 Radius of Turn: 410 Direction: 180 Total Length: 5059
Measured Total Depth: 10576 True Vertical Depth: 5519 End Pt. Location From Release, Unit or Property Line: 216

FOR COMMISSION USE ONLY
Status: Accepted
1122710

API NO: 35-003-22743
 OTC PROD. UNIT NO. 003-212239

PLEASE TYPE OR USE BLACK INK
 NOTE: Attach copy of original 1002A if record



MISSION ion
 2-2000

RECEIVED
 649728
 JAN 10 2014
 OKLAHOMA CORPORATION COMMISSION

ORIGINAL
 AMENDED
 Reason Amended

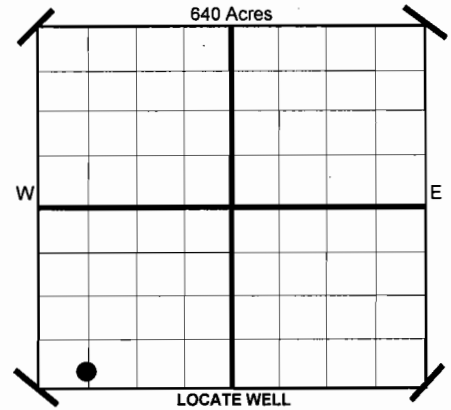
COMPLETION REPORT

TYPE OF DRILLING OPERATION
 STRAIGHT HOLE DIRECTIONAL HOLE HORIZONTAL HOLE

SPUD DATE 10/21/2013
 DRLG FINISHED DATE 11/8/2013
 DATE OF WELL COMPLETION 11/20/2013
 1ST PROD DATE 12/11/2013
 RECOMP DATE

COUNTY Alfalfa SEC 7 TWP 26N RGE 10W
 LEASE NAME Stanley 18-26-10
 SHL S2 1/4 S2 1/4 SW 1/4 SW 1/4 FSL 225 FWL OF 1/4 SEC 660
 ELEVATION 1,185 Ground 1,163
 Derrick Fl

OPERATOR NAME CHESAPEAKE OPERATING, INC. OTC/OCC OPERATOR NO. 17441
 ADDRESS P.O. BOX 18496
 CITY OKLAHOMA CITY STATE OK ZIP 73154



COMPLETION TYPE

SINGLE ZONE
 MULTIPLE ZONE
 LOCATION EXCEPTION ORDER NO. 616217 (interim)
 INCREASED DENSITY ORDER NO.

CASING & CEMENT (Form 1002C must be attached)

TYPE	SIZE	WEIGHT	GRADE	FEET	PSI	SAX	TOP	
CONDUCTOR								
SURFACE	13-3/8"	48#	H-40	295		325	Surface	
INTERMEDIATE 1	9-5/8"	36#	J-55	992		315	Surface	
INTERMEDIATE 2 <i>production</i>	7"	26#	P-110EC	5,701		290	2,000	
LINER	4-1/2"	13.5#	P-110EC	4,983-10,576		580	4,983	
							TOTAL DEPTH	10,576

PACKER @ 4.953 BRAND & TYPE AS-3 PLUG @ TYPE PLUG @ TYPE
 PACKER @ BRAND & TYPE PLUG @ TYPE PLUG @ TYPE

COMPLETION & TEST DATA BY PRODUCING FORMATION

FORMATION	SPACING & SPACING ORDER NUMBER	CLASS: Oil, Gas, Dry, Inj. Disp, Comm Disp, Svc	PERFORATED INTERVALS	ACID/VOLUME	FRACTURE TREATMENT (Fluids/Prop Amounts)
Mississippian	640 596924	Oil	5,700-10,448	18,000 gal Acid 44,588 bbls Frac Fluid 374,247 lbs Proppant	

359MSSP *Reported to Frac Focus*

Minimum Gas Allowable (165:10-17-7) OR Gas Purchaser/Measurer Chesapeake Operating, Inc.
 Oil Allowable (165:10-13-3) 1st Sales Date 12/11/2013

INITIAL TEST DATA

INITIAL TEST DATE	12/13/2013
OIL-BBL/DAY	53
OIL-GRAVITY (API)	33.9
GAS-MCF/DAY	122
GAS-OIL RATIO CU FT/BBL	2,302
WATER-BBL/DAY	3,118
PUMPING OR FLOWING	Artificial Lift
INITIAL SHUT-IN PRESSURE	
CHOKE SIZE	
FLOW TUBING PRESSURE	71

A record of the formations drilled through, and pertinent remarks are presented on the reverse. I declare that I have knowledge of the contents of this report and am authorized by my organization to make this report, which was prepared by me or under my supervision and direction, with the data and facts stated herein to be true, correct, and complete to the best of my knowledge and belief.

SIGNATURE: *Jay Stratton* NAME (PRINT OR TYPE): JAY STRATTON - PRODUCTION MANAGER DATE: 1/6/2014 PHONE NUMBER: 405-848-8000
 ADDRESS: P.O. BOX 18496 CITY: OKLAHOMA CITY STATE: OK ZIP: 73154 EMAIL ADDRESS: megan.moravec@chk.com

PLEASE TYPE OR USE BLACK INK ONLY
FORMATION RECORD

Give formation names and tops, if available, or descriptions and thickness of formations drilled through. Show intervals cored or drillstem tested.

LEASE NAME Stanley 18-26-10

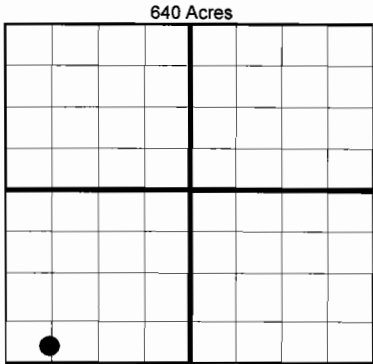
WELL NO. 1H

NAMES OF FORMATIONS	TOP
Mississippian	5,517

FOR COMMISSION USE ONLY	
ITD on file <input type="checkbox"/> YES <input type="checkbox"/> NO	
APPROVED _____ DISAPPROVED _____	2) Reject Codes

Were open hole logs run? _____ yes <input checked="" type="checkbox"/> no
Date Last log was run _____
Was CO ₂ encountered? _____ yes <input checked="" type="checkbox"/> no at what depths? _____
Was H ₂ S encountered? _____ yes <input checked="" type="checkbox"/> no at what depths? _____
Were unusual drilling circumstances encountered? _____ yes <input checked="" type="checkbox"/> no If yes, briefly explain. _____

Other remarks: _____



BOTTOM HOLE LOCATION FOR DIRECTIONAL HOLE

SEC	TWP	RGE	COUNTY			
Spot Location	1/4	1/4	1/4	Feet From 1/4 Sec Lines	FSL	FEL
Measured Total Depth	True Vertical Depth		BHL From Lease, Unit, or Property Line:			

BOTTOM HOLE LOCATION FOR HORIZONTAL HOLE: (LATERALS)

SEC	TWP	RGE	COUNTY			
18	26N	10W	Alfalfa			
Spot Location	S2 1/4	S2 1/4	SW 1/4	SW 1/4	Feet From 1/4 Sec Lines	FSL 216 FWL 660
Depth of Deviation	5,109	Radius of Turn	410	Direction	180	Total Length 5,059
Measured Total Depth	True Vertical Depth		BHL From Lease, Unit, or Property Line:			
10,576	5,519		216			

LATERAL #2

SEC	TWP	RGE	COUNTY			
Spot Location	1/4	1/4	1/4	1/4	Feet From 1/4 Sec Lines	FSL FWL
Depth of Deviation	Radius of Turn		Direction		Total Length	
Measured Total Depth	True Vertical Depth		BHL From Lease, Unit, or Property Line:			

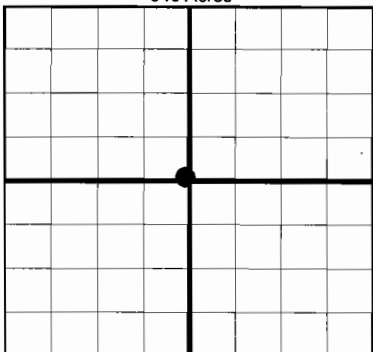
LATERAL #3

SEC	TWP	RGE	COUNTY			
Spot Location	1/4	1/4	1/4	1/4	Feet From 1/4 Sec Lines	FSL FWL
Depth of Deviation	Radius of Turn		Direction		Total Length	
Measured Total Depth	True Vertical Depth		BHL From Lease, Unit, or Property Line:			

If more than three drainholes are proposed, attach a separate sheet indicating the necessary information.

Direction must be stated in degrees azimuth. Please note, the horizontal drainhole and its end point must be located within the boundaries of the lease or spacing unit.

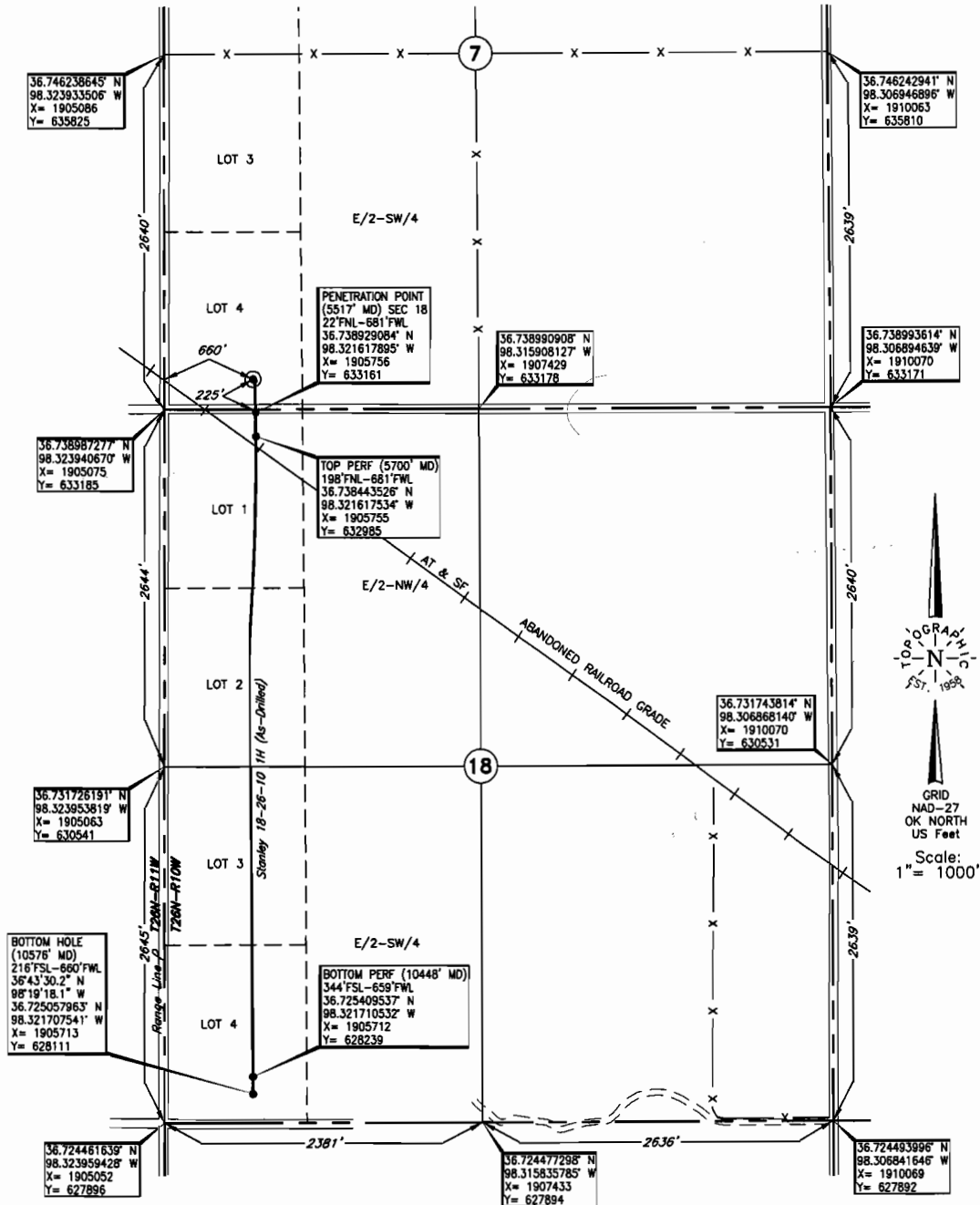
Directional surveys are required for all drainholes and directional wells.
640 Acres



ALFALFA

County, Oklahoma

225'FSL-660'FWL Section 7 Township 26N Range 10W I.M.



Operator: CHESAPEAKE OPERATING, INC.
 Lease Name: STANLEY 18-26-10 Well No.: 1H **ELEVATION:** 1163' Gr. at Pad
 Topography & Vegetation Loc. fell in wheat stub field, pipeline 165' South
 Good Drill Site? Yes Reference Stakes or Alternate Location Stakes Set None
 Best Accessibility to Location From South off county road
 Distance & Direction From the Jct. of US. Hwy. 64 S-W & St. Hwy. 11 N-E, North of Cherokee,
OK, go ±2 miles East on St. Hwy. 11, then ±4 miles South to the SW Cor. of Sec. 7-T26N-R10W

This information was gathered with a GPS receiver with ±1 foot horiz./vert. accuracy

DATUM: NAD-27
 LAT: 36°44'22.6"N
 LONG: 98°19'18.1"W
 LAT: 36.739606767° N
 LONG: 98.321687172° W
 STATE PLANE
 COORDINATES: (US Feet)
 ZONE: OK NORTH
 X: 1905736
 Y: 633408

212510 Date of Drawing: Dec. 03, 2013
 Invoice # 206020 Date Staked: Aug. 20, 2013 JP

FINAL AS-DRILLED PLAT
 AS-DRILLED INFORMATION
 FURNISHED BY CHESAPEAKE OPERATING