

Oklahoma Corporation Commission
 Oil & Gas Conservation Division
 Post Office Box 52000
 Oklahoma City, Oklahoma 73152-2000
 Rule 165: 10-3-25

Form 1002A

API No.: 35103008700003

Completion Report

Spud Date: September 11, 1953

OTC Prod. Unit No.: 103-004328

Drilling Finished Date: October 01, 1953

1st Prod Date: October 27, 1953

Amended

Completion Date: October 27, 1953

Amend Reason: CHANGE NAME OF WELL

Drill Type: STRAIGHT HOLE

Well Name: RICKY (JUANITA WHITE 1) 1-32

Purchaser/Measurer:

Location: NOBLE 32 22N 2E
 C SE NW
 660 FSL 1980 FWL of 1/4 SEC
 Derrick Elevation: 944 Ground Elevation: 938

First Sales Date:

Operator: LEWIS OIL CORPORATION 19777
 P.O. Box 1033
 1905 N CEDERDALE
 STILLWATER, OK 74076-1033

Completion Type	
X	Single Zone
	Multiple Zone
	Commingled

Location Exception	
Order No	
There are no Location Exception records to display.	

Increased Density	
Order No	
There are no Increased Density records to display.	

Casing and Cement							
Type	Size	Weight	Grade	Feet	PSI	SAX	Top of CMT
SURFACE	10 3/4	32.75	J-55	237		200	SURFACE
PRODUCTION	7	23	J-55	4522		300	

Liner								
Type	Size	Weight	Grade	Length	PSI	SAX	Top Depth	Bottom Depth
There are no Liner records to display.								

Total Depth: 4556

Packer	
Depth	Brand & Type
There are no Packer records to display.	

Plug	
Depth	Plug Type
3400	BAKER CIBP

Initial Test Data										
Test Date	Formation	Oil BBL/Day	Oil-Gravity (API)	Gas MCF/Day	Gas-Oil Ratio Cu FT/BBL	Water BBL/Day	Pumpin or Flowing	Initial Shut-In Pressure	Choke Size	Flow Tubing Pressure
Jan 22, 2014	LAYTON	2								

Completion and Test Data by Producing Formation										
Formation Name: LAYTON			Code: 405LYTN			Class: OIL				
Spacing Orders				Perforated Intervals						
Order No		Unit Size		From			To			
There are no Spacing Order records to display.				3255			3258			
Acid Volumes				Fracture Treatments						
There are no Acid Volume records to display.				There are no Fracture Treatments records to display.						

Formation	Top
SEE ORIGINAL	0

Were open hole logs run? No

Date last log run:

Were unusual drilling circumstances encountered? No

Explanation:

Other Remarks
OCC - WELL NAME FORMERLY JUANITA WHITE 1

FOR COMMISSION USE ONLY	
Status: Accepted	1122691

AS SUBMITTED

RECEIVED

Form 1002A
Rev. 2009

JAN 22 2014

OKLAHOMA CORPORATION
COMMISSION

API NO. 103-00870
OTC PROD. UNIT NO. 103-004328

PLEASE TYPE OR USE BLACK INK
NOTE:
Attach copy of original 1002A if recompletion or reentry.

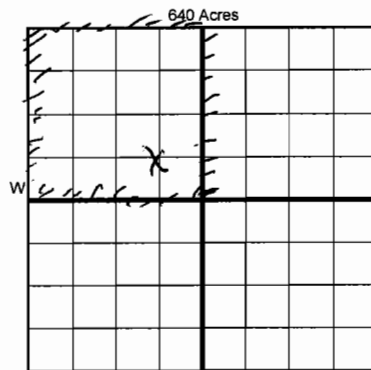
Rule 165:10-3-25

ORIGINAL
 AMENDED (Reason) Name of Well Change

COMPLETION REPORT

TYPE OF DRILLING OPERATION
 STRAIGHT HOLE DIRECTIONAL HOLE HORIZONTAL HOLE
 SERVICE WELL
If directional or horizontal, see reverse for bottom hole location.

SPUD DATE 9-11-53
DRLG FINISHED DATE 10-1-53
DATE OF WELL COMPLETION 10-27-53
1st PROD DATE 10-27-53



COUNTY Noble SEC 32 TWP 22N RGE 2E
LEASE NAME Ricky WELL NO. 1-32
C SE 1/4 NW 1/4 1/4 1/4 FSL OF 1/4 SEC 600 FWL OF 1/4 SEC 1980
ELEVATION N Derrick 944 Ground 938 Latitude (if known)
OPERATOR NAME Lewis Oil Corp. OTC/OCC OPERATOR NO. 19777
ADDRESS P.O. Box 1033
CITY Stillwater STATE OK ZIP 74076

COMPLETION TYPE
 SINGLE ZONE
 MULTIPLE ZONE Application Date
 COMMINGLED Application Date
LOCATION
EXCEPTION ORDER
INCREASED DENSITY ORDER NO.

CASING & CEMENT (Form 1002C must be attached)

TYPE	SIZE	WEIGHT	GRADE	FEET	PSI	SAX	TOP OF CMT
CONDUCTOR							
SURFACE	<u>10 3/4</u>	<u>3275</u>	<u>J-55</u>	<u>237</u>		<u>200</u>	<u>Sub</u>
INTERMEDIATE							
PRODUCTION	<u>7"</u>	<u>23</u>	<u>J-55</u>	<u>4522</u>		<u>300</u>	
LINER							

PACKER @ _____ BRAND & TYPE _____ PLUG @ 3400 TYPE Baker PLUG @ _____ TYPE _____ TOTAL DEPTH 4556
PACKER @ _____ BRAND & TYPE _____ PLUG @ _____ TYPE _____ PLUG @ _____ TYPE _____

COMPLETION & TEST DATA BY PRODUCING FORMATION 405L/TIN

FORMATION	SPACING & SPACING ORDER NUMBER	CLASS: Oil, Gas, Dry, Inj, Disp, Comm Disp, Svc	PERFORATED INTERVALS	ACID/VOLUME	FRACTURE TREATMENT (Fluids/Prop Amounts)
<u>(2nd) Layton</u>		<u>oil</u>	<u>3255-3258</u>		

Min Gas Allowable (165:10-17-7) OR Gas Purchaser/Measurer First Sales Date
 Oil Allowable (165:10-13-3)

INITIAL TEST DATA

INITIAL TEST DATE	<u>1-22-2014</u>			
OIL-BBL/DAY	<u>2</u>			
OIL-GRAVITY (API)				
GAS-MCF/DAY	<u>trace</u>			
GAS-OIL RATIO CU FT/BBL				
WATER-BBL/DAY				
PUMPING OR FLOWING				
INITIAL SHUT-IN PRESSURE				
CHOKE SIZE				
FLOW TUBING PRESSURE				

A record of the formations drilled through, and pertinent remarks are presented on the reverse. I declare that I have knowledge of the contents of this report and am authorized by my organization to make this report which was prepared by me or under my supervision and direction, with the data and facts stated herein to be true, correct, and complete to the best of my knowledge and belief.

SIGNATURE: Richard J Lewis NAME (PRINT OR TYPE)
DATE: 1-22-14 PHONE NUMBER
ADDRESS: P.O. Box 1033 CITY: Stillwater STATE: OK ZIP: 74076 EMAIL ADDRESS: richjlewis63@yahoo.com

PLEASE TYPE OR USE BLACK INK ONLY
FORMATION RECORD

Give formation names and tops, if available, or descriptions and thickness of formations drilled through. Show intervals cored or drillstem tested.

LEASE NAME _____ WELL NO. _____

NAMES OF FORMATIONS	TOP
<i>See original</i>	

FOR COMMISSION USE ONLY

ITD on file YES NO

APPROVED _____ DISAPPROVED _____

2) Reject Codes

Were open hole logs run? _____ yes _____ no

Date Last log was run _____

Was CO₂ encountered? _____ yes _____ no at what depths? _____

Was H₂S encountered? _____ yes _____ no at what depths? _____

Were unusual drilling circumstances encountered? _____ yes _____ no
If yes, briefly explain below

Other remarks: *O.C.C. - formerly Juanita White 1*

640 Acres

If more than three drainholes are proposed, attach a separate sheet indicating the necessary information.

Direction must be stated in degrees azimuth.
Please note, the horizontal drainhole and its end point must be located within the boundaries of the lease or spacing unit.

Directional surveys are required for all drainholes and directional wells.

640 Acres

BOTTOM HOLE LOCATION FOR DIRECTIONAL HOLE

SEC	TWP	RGE	COUNTY							
Spot Location				1/4	1/4	1/4	1/4	Feet From 1/4 Sec Lines	FSL	FWL
Measured Total Depth			True Vertical Depth		BHL From Lease, Unit, or Property Line:					

BOTTOM HOLE LOCATION FOR HORIZONTAL HOLE: (LATERALS)

LATERAL #1

SEC	TWP	RGE	COUNTY							
Spot Location				1/4	1/4	1/4	1/4	Feet From 1/4 Sec Lines	FSL	FWL
Depth of Deviation		Radius of Turn		Direction		Total Length				
Measured Total Depth			True Vertical Depth		BHL From Lease, Unit, or Property Line:					

LATERAL #2

SEC	TWP	RGE	COUNTY							
Spot Location				1/4	1/4	1/4	1/4	Feet From 1/4 Sec Lines	FSL	FWL
Depth of Deviation		Radius of Turn		Direction		Total Length				
Measured Total Depth			True Vertical Depth		BHL From Lease, Unit, or Property Line:					

LATERAL #3

SEC	TWP	RGE	COUNTY							
Spot Location				1/4	1/4	1/4	1/4	Feet From 1/4 Sec Lines	FSL	FWL
Depth of Deviation		Radius of Turn		Direction		Total Length				
Measured Total Depth			True Vertical Depth		BHL From Lease, Unit, or Property Line:					