

Oklahoma Corporation Commission  
Oil & Gas Conservation Division  
Post Office Box 52000  
Oklahoma City, Oklahoma 73152-2000  
Rule 165: 10-3-25

Form 1002A

API No.: 35003211280001

**Completion Report**

Spud Date: February 03, 1984

OTC Prod. Unit No.:

Drilling Finished Date: February 09, 1984

**Amended**

1st Prod Date:

Amend Reason: PLUGGED OCTOBER 17, 2013

Completion Date: March 03, 1984

Recomplete Date: October 17, 2013

**Drill Type: STRAIGHT HOLE**

Well Name: KILDOW 2-32

Purchaser/Measurer:

Location: ALFALFA 32 28N 11W  
SE NE NE NW  
2106 FSL 2467 FWL of 1/4 SEC  
Derrick Elevation: 1211 Ground Elevation: 1204

First Sales Date:

Operator: CHESAPEAKE OPERATING INC 17441  
PO BOX 18496  
6100 N WESTERN AVE  
OKLAHOMA CITY, OK 73154-0496

Completion Type	
X	Single Zone
	Multiple Zone
	Commingled

Location Exception	
Order No	
There are no Location Exception records to display.	

Increased Density	
Order No	
There are no Increased Density records to display.	

Casing and Cement							
Type	Size	Weight	Grade	Feet	PSI	SAX	Top of CMT
CONDUCTOR	16			60		190	SURFACE
SURFACE	8 5/8	17	J-55	447		325	SURFACE
PRODUCTION	5 1/2	15.5	J-55	4296		100	3791

Liner								
Type	Size	Weight	Grade	Length	PSI	SAX	Top Depth	Bottom Depth
There are no Liner records to display.								

**Total Depth: 4296**

Packer	
Depth	Brand & Type
There are no Packer records to display.	

Plug	
Depth	Plug Type
There are no Plug records to display.	

Initial Test Data										
Test Date	Formation	Oil BBL/Day	Oil-Gravity (API)	Gas MCF/Day	Gas-Oil Ratio Cu FT/BBL	Water BBL/Day	Pumpin or Flowing	Initial Shut-In Pressure	Choke Size	Flow Tubing Pressure
There are no Initial Data records to display.										

Completion and Test Data by Producing Formation										
Formation Name: TONKAWA			Code: 406TNKW				Class: DRY			
<b>Spacing Orders</b>					<b>Perforated Intervals</b>					
<b>Order No</b>		<b>Unit Size</b>			<b>From</b>			<b>To</b>		
There are no Spacing Order records to display.					4250			4286		
<b>Acid Volumes</b>					<b>Fracture Treatments</b>					
500 GALLONS HCL ACID					There are no Fracture Treatments records to display.					

Formation	Top
TONKAWA	4248

Were open hole logs run? Yes  
Date last log run: February 08, 1984

Were unusual drilling circumstances encountered? No  
Explanation:

Other Remarks
WELL PLUGGED OCTOBER 17, 2013.

FOR COMMISSION USE ONLY	
Status: Accepted	1122638

API NO. 35-003-21128  
 OTC PROD.  
 UNIT NO. N/A

PLEASE TYPE OR USE BLACK INK ON NOTE:  
 Attach copy of original 1002A if recomple



MISSION RECEIVED

JAN 08 2014

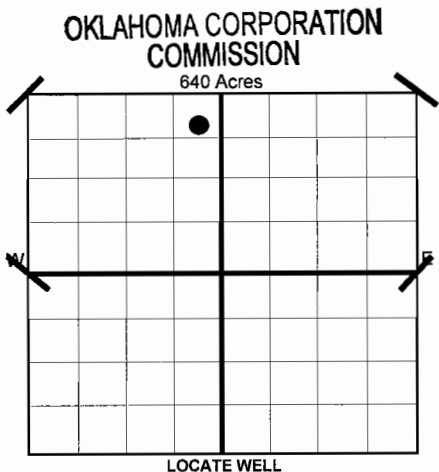
ORIGINAL AMENDED  
 Reason Amended **Plugged 10/17/2013**

COMPLETION REPORT

TYPE OF DRILLING OPERATION  
 STRAIGHT HOLE  DIRECTIONAL HOLE  HORIZONTAL HOLE  
 SERVICE WELL

SPUD DATE 2/3/1984  
 DRLG FINISHED DATE 2/9/1984  
 DATE OF WELL COMPLETION 3/3/1984  
 1ST PROD DATE N/A  
 RECOMP DATE 10-17-13

County Alfalfa SEC 32 TWP 28N RGE 11W  
 LEASE NAME Kildow WELL NO 2-32  
 SHL SE 1/4 NE 1/4 NE 1/4 NW 1/4 FSL 2,106 FWL OF 1/4 SEC 2,467  
 ELEVATION Derrick FI 1,211 Ground 1,204  
 OPERATOR NAME CHESAPEAKE OPERATING, INC. OTC/OCC OPERATOR NO. 17441  
 ADDRESS P.O. BOX 18496  
 CITY OKLAHOMA CITY STATE OK ZIP 73154



LOCATE WELL

COMPLETION TYPE  
 SINGLE ZONE  
 MULTIPLE ZONE  
 COMMINGLED  
 LOCATION EXCEPTION ORDER NO.  
 INCREASED DENSITY ORDER NO.

CASING & CEMENT (Form 1002C must be attached)

TYPE	SIZE	WEIGHT	GRADE	FEET	PSI	SAX	TOP	
CONDUCTOR	16			60		190	surface	
SURFACE	8-5/8"	17#	J-55	447		325	Surface	
INTERMEDIATE								
PRODUCTION	5-1/2"	15.5#	J-55	4,296		100	3,791	
LINER								
							TOTAL DEPTH	4,296

PACKER @ BRAND & TYPE PLUG @ TYPE PLUG @ TYPE  
 PACKER @ BRAND & TYPE PLUG @ TYPE PLUG @ TYPE

COMPLETION & TEST DATA BY PRODUCING FORMATION

*4067N&W*

FORMATION	Tonkawa
SPACING & SPACING ORDER NUMBER	320 244035
CLASS: Oil, Gas, Dry, Inj. Disp, Comm Disp, Svc	Dry
PERFORATED INTERVALS	4,250-4,286
ACID/VOLUME	500 gal HCL Acid
FRACTURE TREATMENT (Fluids/Prop Amounts)	

Minimum Gas Allowable (165:10-17-7) Gas Purchaser/Measurer Chesapeake Operating, Inc.  
 OR 1st Sales Date

INITIAL TEST DATA

INITIAL TEST DATE	<del>12/16/2013</del>
OIL-BBL/DAY	0
OIL-GRAVITY ( API)	
GAS-MCF/DAY	
GAS-OIL RATIO CU FT/BBL	
WATER-BBL/DAY	0
PUMPING OR FLOWING	
INITIAL SHUT-IN PRESSURE	
CHOKE SIZE	
FLOW TUBING PRESSURE	

A record of the formations drilled through, and pertinent remarks are presented on the reverse. I declare that I have knowledge of the contents of this report and am authorized by my organization to make this report, which was prepared by me or under my supervision and direction, with the data and facts stated herein to be true, correct, and complete to the best of my knowledge and belief.

*Jay Stratton* SIGNATURE JAY STRATTON - PRODUCTION MANAGER NAME (PRINT OR TYPE)  
 P.O. BOX 18496 ADDRESS OKLAHOMA CITY CITY OK STATE 73154 ZIP  
 12/26/2013 DATE 405-848-8000 PHONE NUMBER  
 megan.moravec@chk.com EMAIL ADDRESS

**PLEASE TYPE OR USE BLACK INK ONLY**  
FORMATION RECORD

Give formation names and tops, if available, or descriptions and thickness of formations drilled through. Show intervals cored or drillstem tested.

LEASE NAME Kildow

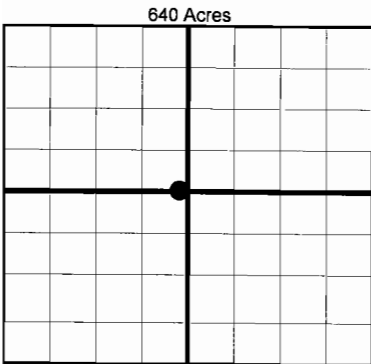
WELL NO. 2-32

NAMES OF FORMATIONS	TOP
Tonkawa	4,248

FOR COMMISSION USE ONLY	
ITD on file	<input type="checkbox"/> YES <input type="checkbox"/> NO
APPROVED	DISAPPROVED
2) Reject Codes	
_____	
_____	
_____	
_____	

Were open hole logs run?	<input checked="" type="checkbox"/> yes	<input type="checkbox"/> no
Date Last log was run	2/8/1984	
Was CO <sub>2</sub> encountered?	<input type="checkbox"/> yes	<input checked="" type="checkbox"/> no at what depths?
Was H <sub>2</sub> S encountered?	<input type="checkbox"/> yes	<input checked="" type="checkbox"/> no at what depths?
Were unusual drilling circumstances encountered?	<input type="checkbox"/> yes	<input checked="" type="checkbox"/> no
If yes, briefly explain.		

Other remarks: Well Plugged 10/17/2013.



**BOTTOM HOLE LOCATION FOR DIRECTIONAL HOLE**

SEC	TWP	RGE	COUNTY			
Spot Location	1/4	1/4	1/4	Feet From 1/4 Sec Lines	FSL	FEL
Measured Total Depth	True Vertical Depth		BHL From Lease, Unit, or Property Line:			

**BOTTOM HOLE LOCATION FOR HORIZONTAL HOLE: (LATERALS)**

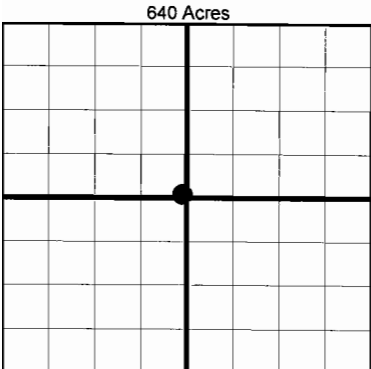
**LATERAL #1**

SEC	TWP	RGE	COUNTY				
Spot Location	1/4	1/4	1/4	1/4	Feet From 1/4 Sec Lines	FSL	FWL
Depth of Deviation	Radius of Turn		Direction		Total Length		
Measured Total Depth	True Vertical Depth		BHL From Lease, Unit, or Property Line:				

If more than three drainholes are proposed, attach a separate sheet indicating the necessary information.

Direction must be stated in degrees azimuth. Please note, the horizontal drainhole and its end point must be located within the boundaries of the lease or spacing unit.

**Directional surveys are required for all drainholes and directional wells.**



**LATERAL #2**

SEC	TWP	RGE	COUNTY				
Spot Location	1/4	1/4	1/4	1/4	Feet From 1/4 Sec Lines	FSL	FWL
Depth of Deviation	Radius of Turn		Direction		Total Length		
Measured Total Depth	True Vertical Depth		BHL From Lease, Unit, or Property Line:				

**LATERAL #3**

SEC	TWP	RGE	COUNTY				
Spot Location	1/4	1/4	1/4	1/4	Feet From 1/4 Sec Lines	FSL	FWL
Depth of Deviation	Radius of Turn		Direction		Total Length		
Measured Total Depth	True Vertical Depth		BHL From Lease, Unit, or Property Line:				