

Oklahoma Corporation Commission  
Oil & Gas Conservation Division  
Post Office Box 52000  
Oklahoma City, Oklahoma 73152-2000  
Rule 165: 10-3-25

Form 1002A

API No.: 35103244690000

**Completion Report**

Spud Date: January 07, 2013

OTC Prod. Unit No.: 103-210191

Drilling Finished Date: March 01, 2013

1st Prod Date: November 20, 2013

Completion Date: December 18, 2013

**Drill Type: HORIZONTAL HOLE**

Min Gas Allowable: Yes

Well Name: YEARLING 3-2S

Purchaser/Measurer: SUPERIOR

Location: NOBLE 3 23N 2W  
NW NE NW NW  
155 FNL 810 FWL of 1/4 SEC  
Derrick Elevation: 0 Ground Elevation: 958

First Sales Date: 11/20/2013

Operator: RANGE PRODUCTION COMPANY 22664

5600 N MAY AVE STE 350  
OKLAHOMA CITY, OK 73112-3967

Completion Type	
X	Single Zone
	Multiple Zone
	Commingled

Location Exception
Order No
611570

Increased Density
Order No
There are no Increased Density records to display.

Casing and Cement							
Type	Size	Weight	Grade	Feet	PSI	SAX	Top of CMT
SURFACE	9 5/8	36	J-55	365		225	SURFACE
PRODUCTION	7	23	P-110	5091		250	3409

Liner								
Type	Size	Weight	Grade	Length	PSI	SAX	Top Depth	Bottom Depth
LINER	4 1/2	11.6	P-110	2679	0	0	4984	7663

**Total Depth: 7835**

Packer	
Depth	Brand & Type
There are no Packer records to display.	

Plug	
Depth	Plug Type
There are no Plug records to display.	

Initial Test Data										
Test Date	Formation	Oil BBL/Day	Oil-Gravity (API)	Gas MCF/Day	Gas-Oil Ratio Cu FT/BBL	Water BBL/Day	Pumpin or Flowing	Initial Shut-In Pressure	Choke Size	Flow Tubing Pressure
Dec 20, 2013	MISSISSIPPIAN	25		295	11800	4653	PUMPING	80	64	86

Completion and Test Data by Producing Formation			
Formation Name: MISSISSIPPIAN	Code: 359MSSP	Class: OIL	
<b>Spacing Orders</b>		<b>Perforated Intervals</b>	
<b>Order No</b>	<b>Unit Size</b>	<b>From</b> <b>To</b>	
606745	640	There are no Perf. Intervals records to display.	
<b>Acid Volumes</b>		<b>Fracture Treatments</b>	
There are no Acid Volume records to display.		60,020 BW, 922,749 POUNDS SAND	

Formation	Top
BIG LIME	4031
OSWEGO	4108
CHEROKEE	4274
SKINNER	4330
PINK LIME	4448
RED FORK	4473
MISSISSIPPIAN	4857

Were open hole logs run? No

Date last log run:

Were unusual drilling circumstances encountered? No

Explanation:

Other Remarks
OCC - THIS WELL IS AN OPEN HOLE COMPLETION FROM BOTTOM OF THE 7" CASING SET AT 5,091' TO TERMINUS AT 7,835'. THE 4 1/2" LINER IS OPEN FROM 5,500' TO 7,649' BUT THE LINER IS NOT CEMENTED. IRREGULAR SECTION.

**Lateral Holes**

Sec: 3 TWP: 23N RGE: 2W County: NOBLE

SE SE NW SW

1417 FSL 1059 FWL of 1/4 SEC

Depth of Deviation: 3727 Radius of Turn: 720 Direction: 169 Total Length: 2977

Measured Total Depth: 7835 True Vertical Depth: 4547 End Pt. Location From Release, Unit or Property Line: 1059

**FOR COMMISSION USE ONLY**

1122597

Status: Accepted

API NO.  
**103-24469**  
OTC PROD. UNIT NO.  
**103-210191**

PLEASE TYPE OR USE BLACK INK ONLY  
NOTE:  
Attach copy of original 1002A if recompletion or reentry



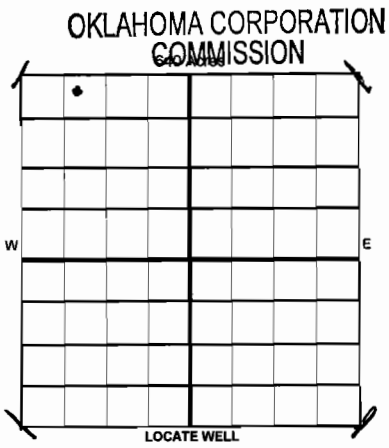
Form 1002A  
**RECEIVED**  
DEC 27 2013

ORIGINAL  
 AMENDED

Reason Amended  
TYPE OF DRILLING OPERATION  
 STRAIGHT HOLE  DIRECTIONAL HOLE  HORIZONTAL HOLE  
 SERVICE WELL  
If directional or horizontal, see reverse for bottom hole location.

COUNTY **NOBLE** SEC **3** TWP **23N** RGE **2W**  
LEASE NAME **YEARLING** WELL NO. **3-2S**  
SHL **NW 1/4 NE 1/4 NW 1/4 NW 1/4** FNL **155'** FWL OF 1/4 SEC **810'**  
ELEVATION **958'** Latitude if Known Longitude if Known  
Derrick Fl Groun  
OPERATOR NAME **RANGE PRODUCTION COMPANY** OTC/OCC OPERATOR NO. **22664**  
ADDRESS **5600 N. MAY, SUITE 350**  
CITY **OKLAHOMA CITY** STATE **OK** ZIP **73112**

COMPLETION REPORT  
SPUD DATE **1/7/2013**  
DRLG FINISHED **3/1/2013**  
WELL COMPLETION **12/18/2013**  
1ST PROD DATE **11/20/2013**  
RECOMP DATE



COMPLETION TYPE  
 SINGLE ZONE  
 MULTIPLE ZONE  
Application Date  
 COMMINGLED  
Application Date  
LOCATION EXCEPTION ORDER NO.  
**#611570**  
INCREASED DENSITY ORDER NO.

CASING & CEMENT (Form 1002C must be attached)

TYPE	SIZE	WEIGHT	GRADE	FEET	PSI	SAX	TOP	
Conductor								
Surface	9 5/8"	36#	J-55	365'		225	SURFACE	
Intermediate	7"	23#	P-110	5091'		250	3409'	
Production								
Liner	4 1/2"	11.6#	P-110	4984-7663'				
							TOTAL DEPTH	7835'

PACKER @ \_\_\_\_\_ BRAND & TYPE \_\_\_\_\_ PLUG @ \_\_\_\_\_ TYPE \_\_\_\_\_ PLUG @ \_\_\_\_\_ TYPE \_\_\_\_\_  
PACKER @ \_\_\_\_\_ BRAND & TYPE \_\_\_\_\_ PLUG @ \_\_\_\_\_ TYPE \_\_\_\_\_ PLUG @ \_\_\_\_\_ TYPE \_\_\_\_\_

COMPLETION & TEST DATA BY PRODUCING FORMATION

FORMATION	SPACING & SPACING	ORDER NUMBER	CLASS: Oil, Gas, Dry, Inj, Disp, Comm Disp, Svc	PERFORATED INTERVALS	ACID/VOLUME	Fracture Treatment (Fluids/Prop Amounts)
<b>MISSISSIPPIAN</b>		<b>640 acres, #606745</b>	<b>OIL</b>	<i>open hole</i> <del>5500-7649'</del>	<b>n/a</b>	<b>60020 BW, 922,749# sand</b>
<i>359MSSP</i>						
<i>Reported to Fedac Focus</i>						

INITIAL TEST DATA

INITIAL TEST DATE	<b>12/20/2013</b>	Gas Purchaser/Measurer	<b>SUPERIOR #21694</b>	1st Sales Date	<b>11/20/2013</b>
OIL-BBL/DAY	<b>25</b>				
OIL-GRAVITY ( API)					
GAS-MCF/DAY	<b>295</b>				
GAS-OIL RATIO CU FT/BBL	<b>11800:1</b>				
WATER-BBL/DAY	<b>4653</b>				
PUMPING OR FLOWING	<b>PUMPING</b>				
INITIAL SHUT-IN PRESSURE	<b>80</b>				
CHOKE SIZE	<b>64</b>				
FLOW TUBING PRESSURE	<b>86</b>				

A record of the formations drilled through, and pertinent remarks are presented on the reverse. I declare that I have knowledge of the contents of this report and am authorized by my organization to make this report, which was prepared by me or under my supervision and direction, with the data and facts stated herein to be true, correct, and complete to the best of my knowledge and belief.

SIGNATURE *Michelle Patton* **Michelle Patton, Regulatory Analyst II** DATE **12/26/2013** PHONE NUMBER **405-810-7341**  
NAME (PRINT OR TYPE)

**5600 N. May, Suite 350** **Oklahoma City** **OK** **73112** **mpatton@rangeresources.com**  
ADDRESS CITY STATE ZIP EMAIL ADDRESS

PLEASE TYPE OR USE BLACK INK ONLY  
FORMATION RECORD

Give formation names and tops, if available, or descriptions and thickness of formations drilled through. Show intervals cored or drillstem tested.

LEASE NAME YEARLING

WELL NO. 3-2S

NAMES OF FORMATIONS	TOP
BIG LIME	4031'
OSWEGO	4108'
CHEROKEE	4274'
SKINNER	4330'
PINK LIME	4448'
RED FORK	4473'
MISSISSIPPIAN	4857'

FOR COMMISSION USE ONLY

ITD on file  YES  NO

APPROVED \_\_\_\_\_ DISAPPROVED \_\_\_\_\_

2) Reject Codes

\_\_\_\_\_

\_\_\_\_\_

\_\_\_\_\_

\_\_\_\_\_

Were open hole logs run? yes  no

Date Last log was run \_\_\_\_\_

Was CO<sub>2</sub> encountered? yes  no at what depths? \_\_\_\_\_

Was H<sub>2</sub>S encountered? yes  no at what depths? \_\_\_\_\_

Were unusual drilling circumstances encountered? \_\_\_\_\_ yes  no  
If yes, briefly explain. \_\_\_\_\_

Other remarks: *OCC - This well is an open hole completion from bottom of the 7" casing set at 5041' to terminus at 7835'. The 4 1/2" liner is open from 5500' to 7649' but the liner is not cemented.*

640 Acres


If more than three drainholes are proposed, attach a separate sheet indicating the necessary information.

Direction must be stated in degrees azimuth. Please note, the horizontal drainhole and its end point must be located within the boundaries of the lease or spacing unit.

Directional surveys are required for all drainholes and directional wells.

640 Acres


**BOTTOM HOLE LOCATION FOR DIRECTIONAL HOLE**

SEC	TWP	RGE	COUNTY				
Spot Location	1/4	1/4	1/4	1/4	Feet From 1/4 Sec Lines	FSL	FWL
Measured Total Depth	True Vertical Depth		BHL From Lease, Unit, or Property Line:				

**BOTTOM HOLE LOCATION FOR HORIZONTAL HOLE: (LATERALS)**

**LATERAL #1**

SEC	TWP	RGE	COUNTY					
3	23N	2W	NOBLE					
Spot Location	1/4 SE	1/4 NW	1/4 SW	1/4	Feet From 1/4 Sec Lines	1417'	FSL 1059'	FWL
Depth of Deviation	Radius of Turn		720	Direction	169	Total Length	2977'	
Measured Total Depth	True Vertical Depth		End Pt Location From Lease, Unit or Property Line:					
7835'	4547'		1223'					

**LATERAL #2**

SEC	TWP	RGE	COUNTY				
Spot Location	1/4	1/4	1/4	1/4	Feet From 1/4 Sec Lines	FSL	FWL
Depth of Deviation	Radius of Turn		Direction	Total Length			
Measured Total Depth	True Vertical Depth		End Pt Location From Lease, Unit or Property Line:				

**LATERAL #3**

SEC	TWP	RGE	COUNTY				
Spot Location	1/4	1/4	1/4	1/4	Feet From 1/4 Sec Lines	FSL	FWL
Depth of Deviation	Radius of Turn		Direction	Total Length			
Measured Total Depth	True Vertical Depth		End Pt Location From Lease, Unit or Property Line:				