

Oklahoma Corporation Commission
Oil & Gas Conservation Division
Post Office Box 52000
Oklahoma City, Oklahoma 73152-2000
Rule 165: 10-3-25

Form 1002A

API No.: 35103244910000

Completion Report

Spud Date: March 07, 2013

OTC Prod. Unit No.:

Drilling Finished Date: March 12, 2013

1st Prod Date: November 18, 2013

Completion Date: November 07, 2013

Drill Type: STRAIGHT HOLE

Well Name: GRACE 8

Purchaser/Measurer:

Location: NOBLE 25 24N 2W
C NE SE SE
990 FSL 2310 FWL of 1/4 SEC
Derrick Elevation: 987 Ground Elevation: 976

First Sales Date:

Operator: DONRAY PETROLEUM LLC 21690

2525 NW EXPRESSWAY STE 640
OKLAHOMA CITY, OK 73112-7230

Completion Type	
X	Single Zone
	Multiple Zone
	Commingled

Location Exception
Order No
There are no Location Exception records to display.

Increased Density
Order No
There are no Increased Density records to display.

Casing and Cement							
Type	Size	Weight	Grade	Feet	PSI	SAX	Top of CMT
SURFACE	8 5/8	23		222		195	SURFACE
PRODUCTION	5 1/2	17		4460		485	1700

Liner								
Type	Size	Weight	Grade	Length	PSI	SAX	Top Depth	Bottom Depth
There are no Liner records to display.								

Total Depth: 4476

Packer	
Depth	Brand & Type
There are no Packer records to display.	

Plug	
Depth	Plug Type
4460	FLOAT SHOE CIBP

Initial Test Data										
Test Date	Formation	Oil BBL/Day	Oil-Gravity (API)	Gas MCF/Day	Gas-Oil Ratio Cu FT/BBL	Water BBL/Day	Pumpin or Flowing	Initial Shut-In Pressure	Choke Size	Flow Tubing Pressure
Nov 18, 2013	COTTAGE GROVE	6	40	6	1000	800	PUMPING	420		

Completion and Test Data by Producing Formation										
Formation Name: COTTAGE GROVE			Code: 405CGGV			Class: OIL				
Spacing Orders				Perforated Intervals						
Order No		Unit Size		From			To			
There are no Spacing Order records to display.				3370			3454			
Acid Volumes				Fracture Treatments						
1,000 GALLONS 10%				1,000 BGW N2 FOAM, 155,000 POUNDS SAND						

Formation	Top
PAWHUSKA	2000
HOOVER	2030
TONKAWA	2450
COTTAGE GROVE	3370
SKINNER	4080
RED FORK	4170
MISSISSIPPIAN	4290
VIOLA	4470

Were open hole logs run? Yes
Date last log run: March 12, 2013

Were unusual drilling circumstances encountered? No
Explanation:

Other Remarks
There are no Other Remarks.

FOR COMMISSION USE ONLY

Status: Accepted	1122348
------------------	---------

AS SUBMITTED

RECEIVED

DEC 05 2013

Form 1002A
Rev. 2009

OKLAHOMA CORPORATION COMMISSION

API NO. **10324491**
OTC PROD. UNIT NO. **21690**

PLEASE TYPE OR USE BLOCK LETTERS
NOTE:

Attach copy of original 1002A if recompletion or reentry.

Post Office Box 52000
Oklahoma City, Oklahoma 73152-2000
Rule 165:10-3-25

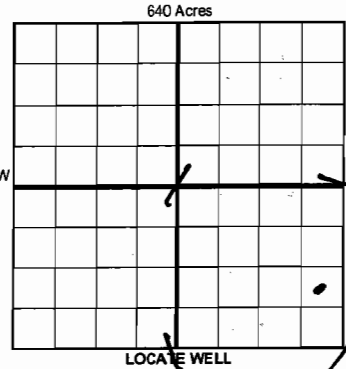
ORIGINAL
 AMENDED (Reason) _____

COMPLETION REPORT

TYPE OF DRILLING OPERATION
 STRAIGHT HOLE DIRECTIONAL HOLE HORIZONTAL HOLE
 SERVICE WELL

If directional or horizontal, see reverse for bottom hole location.

COUNTY **NOBLE** SEC **25** TWP **24N** RGE **20W**
LEASE NAME **GRACE** WELL NO. **#8**
DATE OF WELL COMPLETION **11-7-13**
1st PROD DATE **11-18-13**
RECOMP DATE _____
ELEVATION N Derrick **987'** Ground **976'** FSL OF 1/4 SEC **990'** FWL OF 1/4 SEC **2310'**
Longitude (if known) _____
OPERATOR NAME **DORRAN Petroleum LLC** OTC/OCC OPERATOR NO. **21690**
ADDRESS **2525 N.W. EXPRESSWAY #640**
CITY **OKC** STATE **OKLA** ZIP **73112**



COMPLETION TYPE
 SINGLE ZONE
 MULTIPLE ZONE
Application Date _____
 COMMINGLED
Application Date _____
LOCATION EXCEPTION ORDER INCREASED DENSITY ORDER NO. _____

CASING & CEMENT (Form 1002C must be attached)

TYPE	SIZE	WEIGHT	GRADE	FEET	PSI	SAX	TOP OF CMT
CONDUCTOR							
SURFACE	3 7/8	23#		222'		232	SURF.
INTERMEDIATE							
PRODUCTION	5 1/2	12#		4460'		485	1700'
LINER							CBL
							4476'

PACKER @ _____ BRAND & TYPE _____ PLUG @ **4460'** TYPE **FOOT VALVE** PLUG @ _____ TYPE _____
PACKER @ _____ BRAND & TYPE _____ PLUG @ _____ TYPE **CEBP** PLUG @ _____ TYPE _____

COMPLETION & TEST DATA BY PRODUCING FORMATION

FORMATION	Cottage Grove						
SPACING & SPACING ORDER NUMBER	11 spaced						
CLASS: Oil, Gas, Dry, Inj, Disp, Comm Disp, Svc	Oil						
PERFORATED INTERVALS	3370' TO 3454'						
ACID/VOLUME	1000 GAL 10% 1000 BGL W/ N2 FOAM 155K# SAND						

Min Gas Allowable (165:10-17-7)

Gas Purchaser/Measurer _____

OR

Oil Allowable (165:10-13-3)

First Sales Date _____

INITIAL TEST DATA

INITIAL TEST DATE	11-18-13				
OIL-BBL/DAY	6 B.O.P.D.				
OIL-GRAVITY (API)	40°				
GAS-MCF/DAY	6 MCF/D				
GAS-OIL RATIO CU FT/BBL					
WATER-BBL/DAY	500 B.P.D.				
PUMPING OR FLOWING	PUMPING				
INITIAL SHUT-IN PRESSURE	420 #				
CHOKE SIZE					
FLOW TUBING PRESSURE					

A record of the formations drilled through, and pertinent remarks are presented on the reverse. I declare that I have knowledge of the contents of this report and am authorized by my organization to make this report, which was prepared by me or under my supervision, and direction, with the data and facts stated herein to be true, correct, and complete to the best of my knowledge and belief.

SIGNATURE **RAY CORBITT JR.** NAME (PRINT OR TYPE)
DATE **12-3-13** PHONE NUMBER **405 4348**
ADDRESS **2525 N.W. EXPRESSWAY #640** CITY **OKC** STATE **OKLA** ZIP **73112** EMAIL ADDRESS **Karouat@DorranPetroleum.com**

PLEASE TYPE OR USE BLACK INK ONLY
FORMATION RECORD

Give formation names and tops, if available, or descriptions and thickness of formations drilled through. Show intervals cored or drillstem tested.

LEASE NAME GRACE WELL NO. #8

NAMES OF FORMATIONS	TOP
PAW HUSKA	2000'
HOOVER	2030'
TOOKANA	2450'
COTTAGE GROVE	3370'
SKINNER	4080'
RED FORK	4170'
MISSISSIPPIAN	4290'
VIOLA	4470'

FOR COMMISSION USE ONLY

ITD on file YES NO

APPROVED _____ DISAPPROVED _____

2) Reject Codes _____

Were open hole logs run? yes no

Date Last log was run 3-12-13

Was CO₂ encountered? yes no at what depths? _____

Was H₂S encountered? yes no at what depths? _____

Were unusual drilling circumstances encountered? yes no
If yes, briefly explain below _____

Other remarks: _____

640 Acres

If more than three drainholes are proposed, attach a separate sheet indicating the necessary information.

Direction must be stated in degrees azimuth.
Please note, the horizontal drainhole and its end point must be located within the boundaries of the lease or spacing unit.

Directional surveys are required for all drainholes and directional wells.

640 Acres

BOTTOM HOLE LOCATION FOR DIRECTIONAL HOLE

SEC	TWP	RGE	COUNTY			
Spot Location	1/4	1/4	1/4	Feet From 1/4 Sec Lines	FSL	FWL
Measured Total Depth	True Vertical Depth		BHL From Lease, Unit, or Property Line:			

BOTTOM HOLE LOCATION FOR HORIZONTAL HOLE: (LATERALS)

LATERAL #1

SEC	TWP	RGE	COUNTY			
Spot Location	1/4	1/4	1/4	Feet From 1/4 Sec Lines	FSL	FWL
Depth of Deviation	Radius of Turn		Direction	Total Length		
Measured Total Depth	True Vertical Depth		BHL From Lease, Unit, or Property Line:			

LATERAL #2

SEC	TWP	RGE	COUNTY			
Spot Location	1/4	1/4	1/4	Feet From 1/4 Sec Lines	FSL	FWL
Depth of Deviation	Radius of Turn		Direction	Total Length		
Measured Total Depth	True Vertical Depth		BHL From Lease, Unit, or Property Line:			

LATERAL #3

SEC	TWP	RGE	COUNTY			
Spot Location	1/4	1/4	1/4	Feet From 1/4 Sec Lines	FSL	FWL
Depth of Deviation	Radius of Turn		Direction	Total Length		
Measured Total Depth	True Vertical Depth		BHL From Lease, Unit, or Property Line:			