

Oklahoma Corporation Commission
Oil & Gas Conservation Division
Post Office Box 52000
Oklahoma City, Oklahoma 73152-2000
Rule 165: 10-3-25

Form 1002A

API No.: 35045233660000

Completion Report

Spud Date: July 01, 2013

OTC Prod. Unit No.: 045-211529

Drilling Finished Date: July 19, 2013

1st Prod Date: September 09, 2013

Completion Date: August 29, 2013

Drill Type: HORIZONTAL HOLE

Min Gas Allowable: Yes

Well Name: MARILYN 10-20-25 1H

Purchaser/Measurer: CHESAPEAKE OPERATING INC

Location: ELLIS 10 20N 25W
S2 S2 SE SW
245 FSL 1980 FWL of 1/4 SEC
Derrick Elevation: 2412 Ground Elevation: 2393

First Sales Date: 09/11/2013

Operator: CHESAPEAKE OPERATING INC 17441
PO BOX 18496
6100 N WESTERN AVE
OKLAHOMA CITY, OK 73154-0496

| Completion Type | |
|-----------------|---------------|
| X | Single Zone |
| | Multiple Zone |
| | Commingled |

| Location Exception | |
|--------------------|--------|
| Order No | |
| | 610269 |
| | 616678 |

| Increased Density | |
|-------------------|--------|
| Order No | |
| | 610266 |

| Casing and Cement | | | | | | | |
|-------------------|--------|--------|---------|------|-----|-----|------------|
| Type | Size | Weight | Grade | Feet | PSI | SAX | Top of CMT |
| SURFACE | 13 3/8 | 48 | H-40 | 785 | | 860 | SURFACE |
| INTERMEDIATE | 9 5/8 | 36 | K-55 | 1500 | | 530 | SURFACE |
| PRODUCTION | 7 | 26 | HCP-110 | 7613 | | 320 | 4620 |

| Liner | | | | | | | | |
|-------|-------|--------|-------|--------|-----|-----|-----------|--------------|
| Type | Size | Weight | Grade | Length | PSI | SAX | Top Depth | Bottom Depth |
| LINER | 4 1/2 | 13.5 | P-110 | 5311 | 0 | 470 | 7412 | 12723 |

Total Depth: 12723

| Packer | |
|--------|--------------|
| Depth | Brand & Type |
| 8116 | R |

| Plug | |
|-------|-----------|
| Depth | Plug Type |
| 12642 | PBTD |

| Initial Test Data | | | | | | | | | | |
|-------------------|-----------|-------------|-------------------|-------------|-------------------------|---------------|-------------------|--------------------------|------------|----------------------|
| Test Date | Formation | Oil BBL/Day | Oil-Gravity (API) | Gas MCF/Day | Gas-Oil Ratio Cu FT/BBL | Water BBL/Day | Pumpin or Flowing | Initial Shut-In Pressure | Choke Size | Flow Tubing Pressure |
| Oct 02, 2013 | CLEVELAND | 142 | 44.25 | 825 | 5810 | 77 | ARTIFICIA | | | 177 |

| Completion and Test Data by Producing Formation | | | | | | | | | | |
|---|------------------|--|---------------|--|--|------------|-----------|--|--|--|
| Formation Name: CLEVELAND | | | Code: 405CLVD | | | Class: OIL | | | | |
| Spacing Orders | | | | Perforated Intervals | | | | | | |
| Order No | Unit Size | | | From | | | To | | | |
| 612994 | 640 | | | 8490 | | | 12622 | | | |
| 569662 | 640 | | | | | | | | | |
| Acid Volumes | | | | Fracture Treatments | | | | | | |
| 5,000 GALLONS ACID | | | | 41,531 FRAC FLUID, 2,033,940 POUNDS PROPPANT | | | | | | |

| Formation | Top |
|-----------|------|
| CLEVELAND | 8229 |

Were open hole logs run? No

Date last log run:

Were unusual drilling circumstances encountered? No

Explanation:

| Other Remarks |
|--------------------|
| IRREGULAR SECTION. |

| Lateral Holes |
|---|
| Sec: 10 TWP: 20N RGE: 25W County: ELLIS |
| NE NW NE NW |
| 302 FNL 1970 FWL of 1/4 SEC |
| Depth of Deviation: 7802 Radius of Turn: 375 Direction: 357 Total Length: 4494 |
| Measured Total Depth: 12723 True Vertical Depth: 8177 End Pt. Location From Release, Unit or Property Line: 302 |

| FOR COMMISSION USE ONLY |
|-------------------------|
| Status: Accepted |
| 1121480 |

API NO. 045-23366
 OTC PROD.
 UNIT NO. 045-211529

PLEASE TYPE OR USE BLACK INK ONLY
 NOTE: Attach copy of original 1002A if recompleting



RECEIVED 649009
 OCT 09 2013
 OKLAHOMA CORPORATION COMMISSION

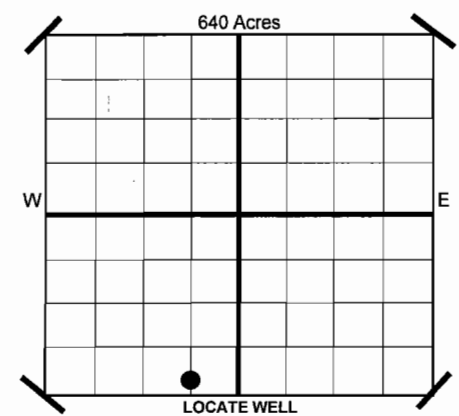
ORIGINAL
 AMENDED
 Reason Amended:

COMPLETION REPORT

TYPE OF DRILLING OPERATION
 STRAIGHT HOLE DIRECTIONAL HOLE HORIZONTAL HOLE
 If directional or horizontal, see reverse for bottom hole location.

SPUD DATE 7/1/2013
 DRLG FINISHED DATE 7/19/2013
 DATE OF WELL COMPLETION 8/29/2013
 1ST PROD DATE 9/9/2013
 RECOMP DATE

COUNTY ELLIS SEC 10 TWP 20N RGE 25W
 LEASE NAME MARILYN 10-20-25 WELL NO 1H
 SHL S2 1/4 S2 1/4 SE 1/4 SW 1/4 FSL 245 FWL OF 1/4 SEC 1980
 ELEVATION 2412 Ground 2393
 OPERATOR NAME CHESAPEAKE OPERATING, INC. OTC/OCC OPERATOR NO. 17441
 ADDRESS P.O. BOX 18496
 CITY OKLAHOMA CITY STATE OK ZIP 73154



COMPLETION TYPE
 SINGLE ZONE
 MULTIPLE ZONE
 COMMINGLED
 LOCATION EXCEPTION ORDER NO. 610269 (INTERIM)
 INCREASED DENSITY ORDER NO. 610266

CASING & CEMENT (Form 1002C must be attached)

| TYPE | SIZE | WEIGHT | GRADE | FEET | PSI | SAX | TOP | |
|--------------|--------|--------|---------|------------|-----|-----|-------------|--------|
| CONDUCTOR | | | | | | | | |
| SURFACE | 13 3/8 | 48# | H-40 | 785 | | 860 | SURFACE | |
| INTERMEDIATE | 9 5/8 | 36# | K-55 | 1500 | | 530 | SURFACE | |
| INTERMEDIATE | 7 | 26# | HCP-110 | 7613 | | 320 | 4,620 | |
| LINER | 4 1/2 | 13.5# | P-110 | 7412-12723 | | 470 | 7,516 | |
| | | | | | | | TOTAL DEPTH | 12,723 |

PACKER @ 8116 BRAND & TYPE R
 PLUG @ 12642 TYPE PBT
 PLUG @ TYPE

COMPLETION & TEST DATA BY PRODUCING FORMATION

| | | | | | | | | |
|---|---|--|--|--|--|--|--|--|
| FORMATION | CLEVELAND | | | | | | | |
| SPACING & SPACING ORDER NUMBER | 640 612994 | | | | | | | |
| CLASS: Oil, Gas, Dry, Inj, Disp, Comm Disp, Svc | OIL | | | | | | | |
| PERFORATED INTERVALS | 8490-12622 | | | | | | | |
| ACID/VOLUME | ACID 5,000 GAL | | | | | | | |
| FRACTURE TREATMENT (Fluids/Prop Amounts) | FRAC FLUID 41,531 PROPPANT 2,033,940 LBS | | | | | | | |

Minimum Gas Allowable (165-10-17-7) OR Gas Purchaser/Measurer Chesapeake Operating, Inc.
 Oil Allowable (165-10-13-3) 1st Sales Date 9/11/2013

INITIAL TEST DATA

| | | | | | |
|--------------------------|-----------------|--|--|--|--|
| INITIAL TEST DATE | 10/2/2013 | | | | |
| OIL-BBL/DAY | 142 | | | | |
| OIL-GRAVITY (API) | 44.25 | | | | |
| GAS-MCF/DAY | 825 | | | | |
| GAS-OIL RATIO CU FT/BBL | 5,809 | | | | |
| WATER-BBL/DAY | 77 | | | | |
| PUMPING OR FLOWING | ARTIFICIAL LIFT | | | | |
| INITIAL SHUT-IN PRESSURE | | | | | |
| CHOKE SIZE | | | | | |
| FLOW TUBING PRESSURE | 177 | | | | |

A record of the formations drilled through, and pertinent remarks are presented on the reverse. I declare that I have knowledge of the contents of this report and am authorized by my organization to make this report, which was prepared by me or under my supervision and direction, with the data and facts stated herein to be true, correct, and complete to the best of my knowledge and belief.

Ted Campbell
 SIGNATURE
 P.O. BOX 18496 OKLAHOMA CITY OK 73154
 ADDRESS CITY STATE ZIP

TED CAMPBELL-DISTRICT MANAGER
 NAME (PRINT OR TYPE)

10/4/13
 DATE

405-848-8000
 PHONE NUMBER

ARIANNA.BEDELL@chk.com
 EMAIL ADDRESS

PLEASE TYPE OR USE BLACK INK ONLY
FORMATION RECORD

Give formation names and tops, if available, or descriptions and thickness of formations drilled through. Show intervals cored or drillstem tested.

LEASE NAME MARILYN 10-20-25

WELL NO. 1H

| NAMES OF FORMATIONS | TOP |
|---------------------|-------|
| CLEVELAND | 8,229 |

FOR COMMISSION USE ONLY

ITD on file YES NO

APPROVED _____ DISAPPROVED _____

2) Reject Codes _____

Were open hole logs run? yes no

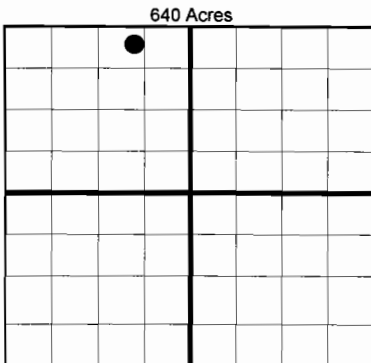
Date Last log was run N/A

Was CO₂ encountered? yes no at what depths?

Was H₂S encountered? yes no at what depths?

Were unusual drilling circumstances encountered? yes no
If yes, briefly explain.

Other remarks:



BOTTOM HOLE LOCATION FOR DIRECTIONAL HOLE

| SEC | TWP | RGE | COUNTY | | | |
|----------------------|---------------------|-----|---|-------------------------|-----|-----|
| Spot Location | 1/4 | 1/4 | 1/4 | Feet From 1/4 Sec Lines | FSL | FWL |
| Measured Total Depth | True Vertical Depth | | BHL From Lease, Unit, or Property Line: | | | |

BOTTOM HOLE LOCATION FOR HORIZONTAL HOLE: (LATERALS)

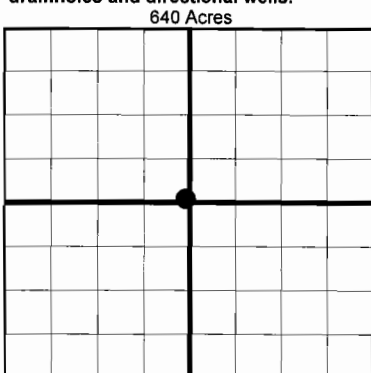
LATERAL #1

| SEC | TWP | RGE | COUNTY | | | | |
|----------------------|--------|---------------------|--------|---|-------------------------|--------------|----------|
| 10 | 20N | 25W | ELLIS | | | | |
| Spot Location | NE 1/4 | NW 1/4 | NE 1/4 | NW 1/4 | Feet From 1/4 Sec Lines | FNL 302 | FWL 1970 |
| Depth of Deviation | 7802 | Radius of Turn | 375 | Direction | 357 | Total Length | 4494 |
| Measured Total Depth | 12,723 | True Vertical Depth | 8,177 | BHL From Lease, Unit, or Property Line: 302 | | | |

If more than three drainholes are proposed, attach a separate sheet indicating the necessary information.

Direction must be stated in degrees azimuth. Please note, the horizontal drainhole and its end point must be located within the boundaries of the lease or spacing unit.

Directional surveys are required for all drainholes and directional wells.



LATERAL #2

| SEC | TWP | RGE | COUNTY | | | |
|----------------------|---------------------|-----|---|-------------------------|-----|-----|
| Spot Location | 1/4 | 1/4 | 1/4 | Feet From 1/4 Sec Lines | FSL | FWL |
| Depth of Deviation | Radius of Turn | | Direction | Total Length | | |
| Measured Total Depth | True Vertical Depth | | BHL From Lease, Unit, or Property Line: | | | |

LATERAL #3

| SEC | TWP | RGE | COUNTY | | | |
|----------------------|---------------------|-----|---|-------------------------|-----|-----|
| Spot Location | 1/4 | 1/4 | 1/4 | Feet From 1/4 Sec Lines | FSL | FWL |
| Depth of Deviation | Radius of Turn | | Direction | Total Length | | |
| Measured Total Depth | True Vertical Depth | | BHL From Lease, Unit, or Property Line: | | | |

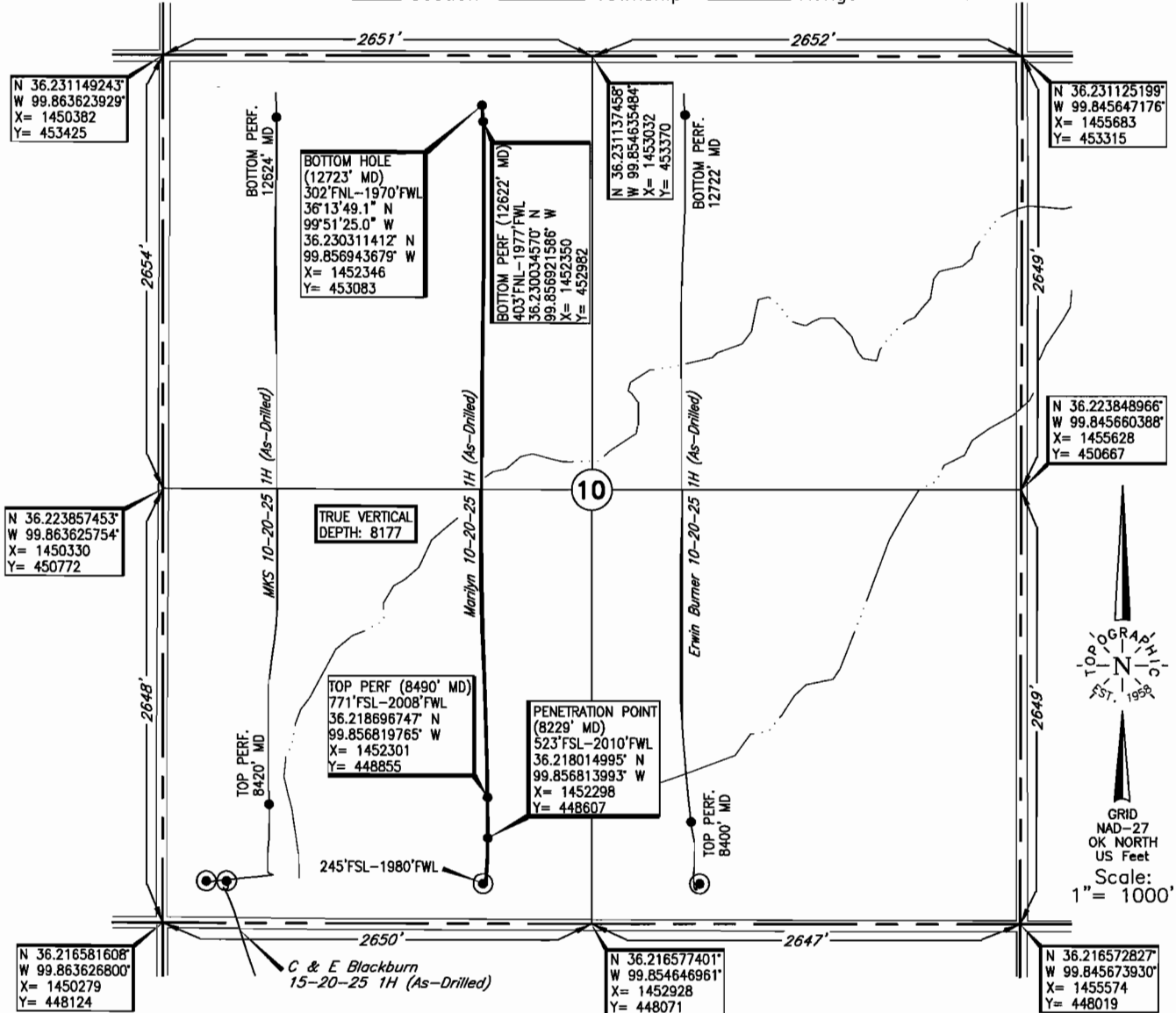
TOPOGRAPHIC LAND SURVEYORS OF OKLAHOMA

6709 NORTH CLASSEN BLVD., OKLA. CITY, OKLA. 73116 * LOCAL (405) 843-4847 * OUT OF STATE (800) 654-3219
 Certificate of Authorization No. 1293.

ELLIS

County, Oklahoma

245'FSL-1980'FWL Section 10 Township 20N Range 25W I.M.



Operator: CHESAPEAKE OPERATING, INC.

Lease Name: MARILYN 10-20-25

Well No.: 1H

ELEVATION:
2393' Gr. at Stake

Topography & Vegetation Loc. fell in terraced pasture.

Good Drill Site? Yes Reference Stakes or Alternate Location
 Stakes Set None

Best Accessibility to Location From county road South of location.

Distance & Direction
 from Hwy Jct or Town From Jct. of U.S. Hwy. 283 North and U.S. Hwy. 60, go ±5.5 mi. North on U.S. Hwy. 283,
then ±1.0 mi. East to the SW Corner of Section 10, T20N-R25W.

This information was gathered with a GPS receiver with ±1.0' accuracy.

DATUM: NAD-27
 LAT: 36°13'02.1"N
 LONG: 99°51'24.9"W
 LAT: 36.217251504° N
 LONG: 99.856914540° W
 STATE PLANE
 COORDINATES: (US Feet)
 ZONE: OK NORTH
 X: 1452263
 Y: 448329

206806 Date of Drawing: Aug. 28, 2013
 Invoice # 199277 Date Staked: Apr. 16, 2013 JP

FINAL AS-DRILLED PLAT

AS-DRILLED INFORMATION
 FURNISHED BY CHESAPEAKE OPERATING

GS1A
 CD #201301814