

Oklahoma Corporation Commission  
Oil & Gas Conservation Division  
Post Office Box 52000  
Oklahoma City, Oklahoma 73152-2000  
Rule 165: 10-3-25

Form 1002A

API No.: 35045233650000

**Completion Report**

Spud Date: June 27, 2013

OTC Prod. Unit No.: 045-211576

Drilling Finished Date: July 22, 2013

1st Prod Date: September 14, 2013

Completion Date: September 14, 2013

**Drill Type: HORIZONTAL HOLE**

Min Gas Allowable: Yes

Well Name: MGS 27-21-26 1H

Purchaser/Measurer: CHESAPEAKE OPERATING INC

Location: ELLIS 27 21N 26W  
SE SW SE SE  
261 FSL 700 FEL of 1/4 SEC  
Derrick Elevation: 2318 Ground Elevation: 2296

First Sales Date: 09/18/2013

Operator: CHESAPEAKE OPERATING INC 17441  
PO BOX 18496  
6100 N WESTERN AVE  
OKLAHOMA CITY, OK 73154-0496

Completion Type	
X	Single Zone
	Multiple Zone
	Commingled

Location Exception
Order No
615455

Increased Density
Order No
There are no Increased Density records to display.

Casing and Cement							
Type	Size	Weight	Grade	Feet	PSI	SAX	Top of CMT
SURFACE	13 3/8	48	H-40	575		715	SURFACE
INTERMEDIATE	9 5/8	36	J-55	1512		550	SURFACE
PRODUCTION	7	26	P-110HC	7210		315	4494

Liner								
Type	Size	Weight	Grade	Length	PSI	SAX	Top Depth	Bottom Depth
LINER	4 1/2	13.5	HCP-110	5360	0	470	6986	12346

**Total Depth: 12346**

Packer	
Depth	Brand & Type
There are no Packer records to display.	

Plug	
Depth	Plug Type
12266	PBTD

Initial Test Data										
Test Date	Formation	Oil BBL/Day	Oil-Gravity (API)	Gas MCF/Day	Gas-Oil Ratio Cu FT/BBL	Water BBL/Day	Pumpin or Flowing	Initial Shut-In Pressure	Choke Size	Flow Tubing Pressure
Sep 28, 2013	CLEVELAND	425	43.84	2631	6191		FLOWING	978	28/64	462

Completion and Test Data by Producing Formation										
Formation Name: CLEVELAND			Code: 405CLVD			Class: OIL				
<b>Spacing Orders</b>				<b>Perforated Intervals</b>						
<b>Order No</b>	<b>Unit Size</b>			<b>From</b>			<b>To</b>			
612524	640			8170			12216			
<b>Acid Volumes</b>				<b>Fracture Treatments</b>						
9,000 GALLONS HCL ACID				44,949 BARRELS FRAC FLUID, 2,697,420 POUNDS PROPPANT						

Formation	Top
CLEVELAND	7959

Were open hole logs run? No

Date last log run:

Were unusual drilling circumstances encountered? No

Explanation:

Other Remarks
OCC: FLE ORDER HAS NOT BEEN ISSUED. WE HAVE ACCEPTED OPERATORS DATA AS SUBMITTED. IRREGULAR SECTION.

Lateral Holes
Sec: 27 TWP: 21N RGE: 26W County: ELLIS
NE NW NE NE
231 FNL 719 FEL of 1/4 SEC
Depth of Deviation: 7367 Radius of Turn: 463 Direction: 3 Total Length: 4387
Measured Total Depth: 12346 True Vertical Depth: 7831 End Pt. Location From Release, Unit or Property Line: 231

FOR COMMISSION USE ONLY
Status: Accepted
1121338

API NO. 35-045-23365  
 OTC PROD.  
 UNIT NO. 045-211576

PLEASE TYPE OR USE BLACK INK  
 NOTE: Attach copy of original 1002A if recompl



RECEIVED Form 1002A  
 648913  
 Rev. 2009

OCT 08 2013

OKLAHOMA CORPORATION COMMISSION

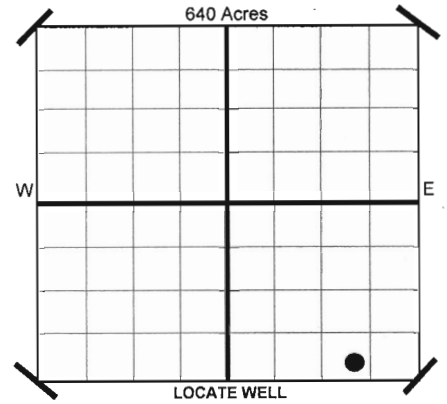
ORIGINAL  
 AMENDED  
 Reason Amended

TYPE OF DRILLING OPERATION  
 STRAIGHT HOLE  DIRECTIONAL HOLE  HORIZONTAL HOLE  
 SERVICE WELL  
 If directional or horizontal, see reverse for bottom hole location.

SPUD DATE 6/27/2013  
 DRLG FINISHED DATE 7/22/2013  
 DATE OF WELL COMPLETION 9/14/2013  
 1ST PROD DATE 9/14/2013  
 RECOMP DATE

COUNTY ELLIS SEC 27 TWP 21N RGE 26W  
 LEASE NAME MGS 27-21-26 WELL NO 1H  
 SHL SE 1/4 SW 1/4 SE 1/4 SE 1/4 FSL 261 FEL OF 1/4 SEC 700  
 ELEVATION Derrick FI 2,318 Ground 2,296 Latitude (if Known) Longitude (if Known)

OPERATOR NAME CHESAPEAKE OPERATING, INC. OTC/OCC OPERATOR NO. 17441  
 ADDRESS P.O. BOX 18496  
 CITY OKLAHOMA CITY STATE OK ZIP 73154



COMPLETION TYPE  
 SINGLE ZONE  
 MULTIPLE ZONE  
 COMMINGLED  
 LOCATION EXCEPTION ORDER NO. 615455 (INTERIM)  
 INCREASED DENSITY ORDER NO. N/A

CASING & CEMENT (Form 1002C must be attached)

TYPE	SIZE	WEIGHT	GRADE	FEET	PSI	SAX	TOP	
CONDUCTOR								
SURFACE	13 3/8"	48#	H-40	575		715	SURFACE	
INTERMEDIATE I	9 5/8"	36#	J-55	1,512		550	SURFACE	
INTERMEDIATE II	7"	26#	P-110HC	7,210		315	4,494	
LINER	4 1/2"	13.5#	HCP-110	6,986-12,346		470	7,020	
							TOTAL DEPTH	12,346

PACKER @ \_\_\_\_\_ BRAND & TYPE \_\_\_\_\_ PLUG @ 12.266 TYPE PBDT PLUG @ \_\_\_\_\_ TYPE \_\_\_\_\_  
 PACKER @ \_\_\_\_\_ BRAND & TYPE \_\_\_\_\_ PLUG @ \_\_\_\_\_ TYPE \_\_\_\_\_ PLUG @ \_\_\_\_\_ TYPE \_\_\_\_\_

COMPLETION & TEST DATA BY PRODUCING FORMATION

FORMATION	CLEVELAND						
SPACING & SPACING ORDER NUMBER	640 612524						
CLASS: Oil, Gas, Dry, Inj. Disp, Comm Disp, Svc	Oil						
PERFORATED INTERVALS	8,170-12,216						
ACID/VOLUME	HCL Acid 9,000 GAL						
FRACTURE TREATMENT (Fluids/Prop Amounts)	Frac Fluid 44,949 BBLs Proppant 2,697,420 LBS						

Minimum Gas Allowable (165-10-17-7) Gas Purchaser/Measurer Chesapeake Operating, Inc.  
 OR  
 1st Sales Date 9/18/2013

INITIAL TEST DATA

INITIAL TEST DATE	9/28/2013				
OIL-BBL/DAY	425				
OIL-GRAVITY (API)	43.84				
GAS-MCF/DAY	2,631				
GAS-OIL RATIO CU FT/BBL	6,191				
WATER-BBL/DAY	0				
PUMPING OR FLOWING	Flowing				
INITIAL SHUT-IN PRESSURE	978				
CHOKE SIZE	28/64				
FLOW TUBING PRESSURE	462				

A record of the formations drilled through, and pertinent remarks are presented on the reverse. I declare that I have knowledge of the contents of this report and am authorized by my organization to make this report, which was prepared by me or under my supervision and direction, with the data and facts stated herein to be true, correct, and complete to the best of my knowledge and belief.

*Ted Campbell*  
 SIGNATURE NAME (PRINT OR TYPE) Ted Campbell - DISTRICT MANAGER  
 P.O. BOX 18496 OKLAHOMA CITY OK 73154  
 ADDRESS CITY STATE ZIP  
 DATE 9/30/2013  
 PHONE NUMBER 405-848-8000  
 EMAIL ADDRESS dawn.richardson@chk.com

PLEASE TYPE OR USE BLACK INK ONLY  
FORMATION RECORD

Give formation names and tops, if available, or descriptions and thickness of formations drilled through. Show intervals cored or drillstem tested.

LEASE NAME MGS 27-21-26

WELL NO. 1H

NAMES OF FORMATIONS	TOP
CLEVELAND	7,959

FOR COMMISSION USE ONLY

ITD on file  YES  NO

APPROVED \_\_\_\_\_ DISAPPROVED \_\_\_\_\_

2) Reject Codes

\_\_\_\_\_

\_\_\_\_\_

\_\_\_\_\_

\_\_\_\_\_

Were open hole logs run?      yes  no

Date Last log was run      N/A

Was CO<sub>2</sub> encountered?      yes  no at what depths?

Was H<sub>2</sub>S encountered?      yes  no at what depths?

Were unusual drilling circumstances encountered?      yes  no   
If yes, briefly explain.

Other remarks:

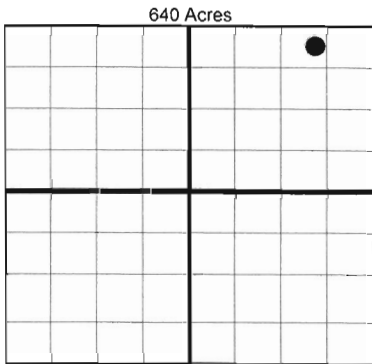
\_\_\_\_\_

\_\_\_\_\_

\_\_\_\_\_

\_\_\_\_\_

\_\_\_\_\_



**BOTTOM HOLE LOCATION FOR DIRECTIONAL HOLE**

SEC	TWP	RGE	COUNTY				
Spot Location	1/4	1/4	1/4	1/4	Feet From 1/4 Sec Lines	FSL	FWL
Measured Total Depth	True Vertical Depth		BHL From Lease, Unit, or Property Line:				

**BOTTOM HOLE LOCATION FOR HORIZONTAL HOLE: (LATERALS)**

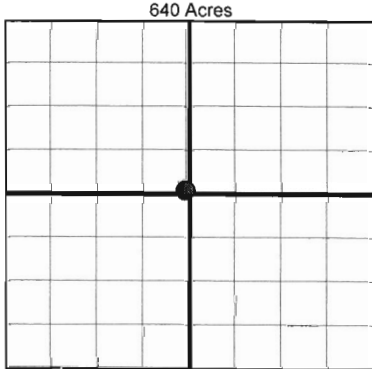
**LATERAL #1**

SEC	TWP	RGE	COUNTY				
27	21N	26W	ELLIS				
Spot Location	NE 1/4	NW 1/4	NE 1/4	NE 1/4	Feet From 1/4 Sec Lines	FNL 231	FEL 719
Depth of Deviation	7,367	Radius of Turn	463	Direction	3	Total Length	4,387
Measured Total Depth	True Vertical Depth		BHL From Lease, Unit, or Property Line:				
12,346	7,830		231				

If more than three drainholes are proposed, attach a separate sheet indicating the necessary information.

Direction must be stated in degrees azimuth. Please note, the horizontal drainhole and its end point must be located within the boundaries of the lease or spacing unit.

Directional surveys are required for all drainholes and directional wells.



**LATERAL #2**

SEC	TWP	RGE	COUNTY				
Spot Location	1/4	1/4	1/4	1/4	Feet From 1/4 Sec Lines	FSL	FWL
Depth of Deviation	Radius of Turn		Direction		Total Length		
Measured Total Depth	True Vertical Depth		BHL From Lease, Unit, or Property Line:				

**LATERAL #3**

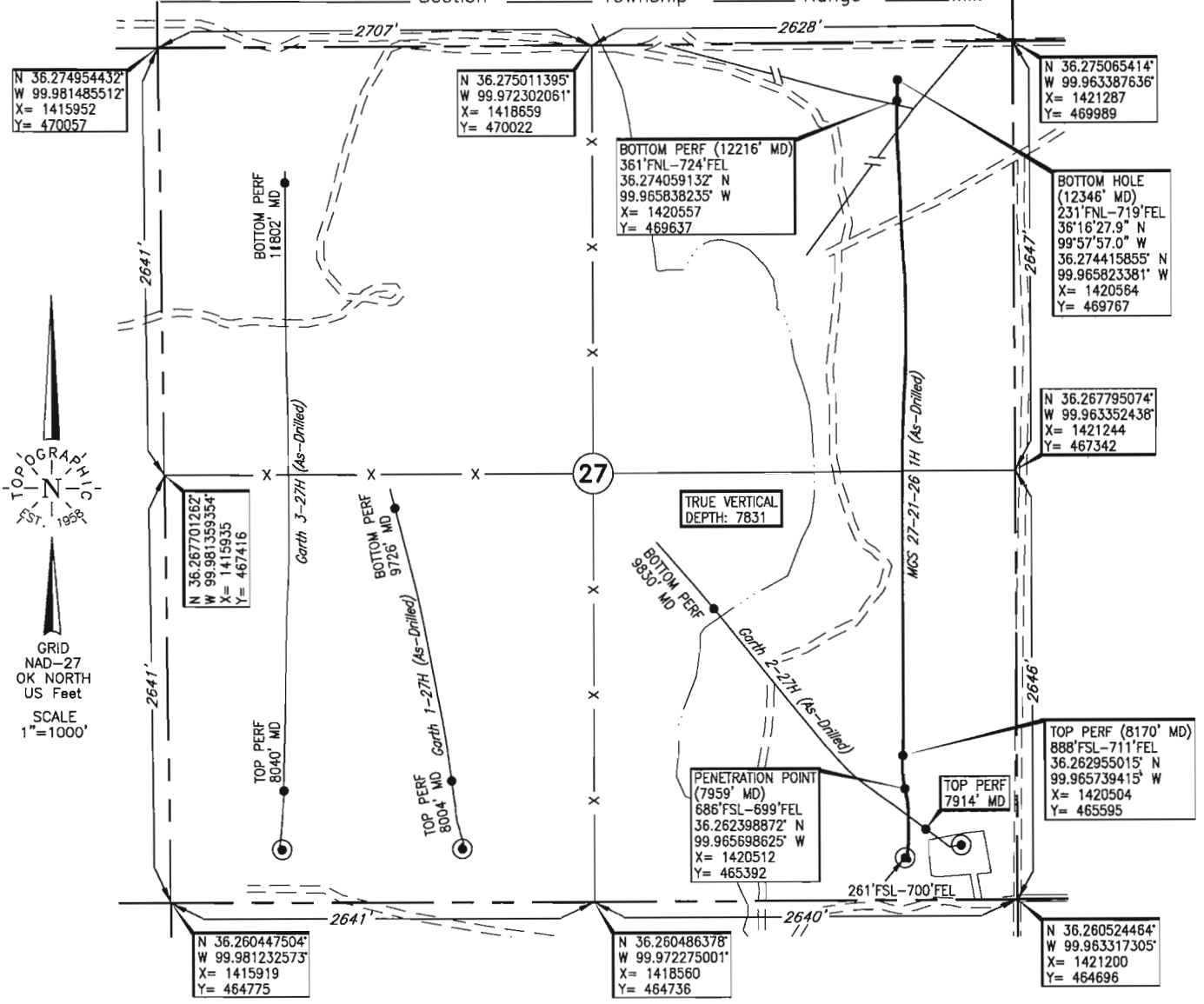
SEC	TWP	RGE	COUNTY				
Spot Location	1/4	1/4	1/4	1/4	Feet From 1/4 Sec Lines	FSL	FWL
Depth of Deviation	Radius of Turn		Direction		Total Length		
Measured Total Depth	True Vertical Depth		BHL From Lease, Unit, or Property Line:				

**TOPOGRAPHIC LAND SURVEYORS OF OKLAHOMA**

6709 NORTH CLASSEN BLVD., OKLA. CITY, OKLA. 73116 \* LOCAL (405) 843-4847 \* OUT OF STATE (800) 654-3219  
 Certificate of Authorization No. 1293.

ELLIS County, Oklahoma

261'FSL-700'FEL Section 27 Township 21N Range 26W I.M.



Operator: CHESAPEAKE OPERATING, INC.

Lease Name: MGS 27-21-26

Well No.: 1H

**ELEVATION:**  
 2296' Gr. at Stake

Topography & Vegetation Loc. fell in brush pasture, wellhead ±350' East, existing well pad 180' East

Good Drill Site? Yes Reference Stakes or Alternate Location Stakes Set None

Best Accessibility to Location From South off lease road

Distance & Direction from Hwy Jct or Town From US. Hwy. 283 & Railroad tracks in Shattack, OK, go ±1 mile

South on US. Hwy. 283, then ±4.7 miles West on county road and lease road to the SE Cor. of Sec. 27-T21N-R26W

(This information was gathered with a GPS receiver with ±1.0' accuracy.)  
 DATUM: NAD-27  
 LAT: 36°15'40.4"N  
 LONG: 99°57'56.5"W  
 LAT: 36.261230671° N  
 LONG: 99.965695284° W  
 STATE PLANE COORDINATES: (US Feet)  
 ZONE: OK NORTH  
 X: 1420505  
 Y: 464967

207703 Date of Drawing: Sep. 10, 2013  
 Invoice # 198131 Date Staked: Apr. 4, 2013 JP

**FINAL AS-DRILLED PLAT**

AS-DRILLED INFORMATION  
 FURNISHED BY CHESAPEAKE OPERATING