

Oklahoma Corporation Commission  
Oil & Gas Conservation Division  
Post Office Box 52000  
Oklahoma City, Oklahoma 73152-2000  
Rule 165: 10-3-25

Form 1002A

API No.: 35003226820000

**Completion Report**

Spud Date: July 07, 2013

OTC Prod. Unit No.: 003-211486

Drilling Finished Date: July 29, 2013

1st Prod Date: September 04, 2013

Completion Date: August 13, 2013

**Drill Type: HORIZONTAL HOLE**

Min Gas Allowable: Yes

Well Name: HOUSE 35-28-10 1H

Purchaser/Measurer: CHESAPEAKE OPERATING INC

Location: ALFALFA 35 28N 10W  
S2 S2 SE SE  
200 FSL 660 FEL of 1/4 SEC  
Derrick Elevation: 1182 Ground Elevation: 1167

First Sales Date: 09/04/2013

Operator: CHESAPEAKE OPERATING INC 17441  
PO BOX 18496  
6100 N WESTERN AVE  
OKLAHOMA CITY, OK 73154-0496

Completion Type	
X	Single Zone
	Multiple Zone
	Commingled

Location Exception	
Order No	
	613675
	616685

Increased Density	
Order No	
There are no Increased Density records to display.	

Casing and Cement							
Type	Size	Weight	Grade	Feet	PSI	SAX	Top of CMT
SURFACE	13 3/8	48	J-55	362		245	SURFACE
INTERMEDIATE	9 5/8	36	J-55	1527		460	SURFACE
PRODUCTION	7	26	P-110EC	5392		285	5290

Liner								
Type	Size	Weight	Grade	Length	PSI	SAX	Top Depth	Bottom Depth
LINER	4 1/2	13.5	P-110EC	5272	0	685	4344	9616

**Total Depth: 10002**

Packer	
Depth	Brand & Type
5085	MODEL R

Plug	
Depth	Plug Type
9570	PBTD

Initial Test Data										
Test Date	Formation	Oil BBL/Day	Oil-Gravity (API)	Gas MCF/Day	Gas-Oil Ratio Cu FT/BBL	Water BBL/Day	Pumpin or Flowing	Initial Shut-In Pressure	Choke Size	Flow Tubing Pressure
Sep 09, 2013	MISSISSIPPIAN	198	37.05	746	3768	1924	ARTIFICIA			175

Completion and Test Data by Producing Formation										
Formation Name: MISSISSIPPIAN			Code: 359MSSP			Class: OIL				
<b>Spacing Orders</b>				<b>Perforated Intervals</b>						
<b>Order No</b>	<b>Unit Size</b>			<b>From</b>			<b>To</b>			
613529	640			5415			9489			
<b>Acid Volumes</b>				<b>Fracture Treatments</b>						
16,500 GALLONS ACID				40,451 BARRELS FRAC FLUID, 466,920 POUNDS PROPPANT						

Formation	Top
MISSISSIPPIAN	5114

Were open hole logs run? No

Date last log run:

Were unusual drilling circumstances encountered? No

Explanation:

Other Remarks
IRREGULAR SECTION.

Lateral Holes
Sec: 35 TWP: 28N RGE: 10W County: ALFALFA
NW NE NE NE
107 FNL 644 FEL of 1/4 SEC
Depth of Deviation: 4869 Radius of Turn: 326 Direction: 1 Total Length: 4888
Measured Total Depth: 10002 True Vertical Depth: 5195 End Pt. Location From Release, Unit or Property Line: 107

FOR COMMISSION USE ONLY
Status: Accepted
1121311

API NO. **35-003-22682**  
 OTC PROD. UNIT NO. **003-211486**

PLEASE TYPE OR USE BLACK INK  
 NOTE: Attach copy of original 1002A if received



MISSION ion  
 2-2000

**RECEIVED**

OCT 02 2013

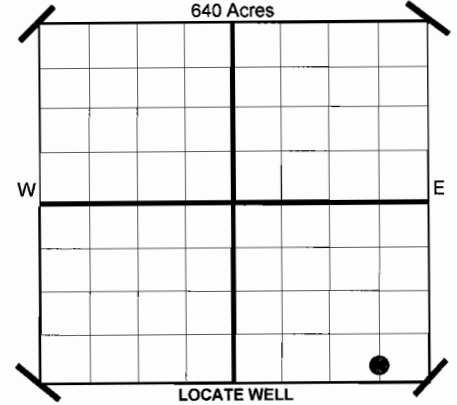
OKLAHOMA CORPORATION COMMISSION

ORIGINAL  
 AMENDED  
 Reason Amended  
 TYPE OF DRILLING OPERATION  
 STRAIGHT HOLE  DIRECTIONAL HOLE  HORIZONTAL HOLE  
 SERVICE WELL

COMPLETION REPORT

If directional or horizontal, see reverse for bottom hole location.

COUNTY	Alfalfa	SEC	35	TWP	28N	RGE	10W	SPUD DATE	7/7/2013
LEASE NAME	House 35-28-10			WELL NO	1H			DRLG FINISHED DATE	7/29/2013
SHL	S2 1/4	S2 1/4	SE 1/4	SE 1/4	FSL	200	FEL OF	1/4 SEC	660
ELEVATION	Derrick Fl 1,182		Ground 1,167		Latitude (if Known)		Longitude (if Known)		
OPERATOR NAME	CHESAPEAKE OPERATING, INC.				OTC/OCC OPERATOR NO.		17441		
ADDRESS	P.O. BOX 18496								
CITY	OKLAHOMA CITY			STATE	OK		ZIP	73154	



COMPLETION TYPE

SINGLE ZONE  
 MULTIPLE ZONE  
 Application Date  
 COMMINGLED  
 Application Date  
 LOCATION EXCEPTION ORDER NO. **613675 (interim)**  
 INCREASED DENSITY ORDER NO.

CASING & CEMENT (Form 1002C must be attached)

TYPE	SIZE	WEIGHT	GRADE	FEET	PSI	SAX	TOP
CONDUCTOR							
SURFACE	13-3/8"	48#	J-55	362		245	Surface
INTERMEDIATE 1	9-5/8"	36#	J-55	1,527		460	Surface
<del>INTERMEDIATE 2</del> Production	7"	26#	P-110EC	5,392		285	5,290
LINER	4-1/2"	13.5#	P-110EC	4,344-9,616		685	5,460

PACKER @ 5,085 BRAND & TYPE Model R PLUG @            TYPE            PLUG @ 9,570 TYPE PBTD TOTAL DEPTH 10,002  
 PACKER @            BRAND & TYPE            PLUG @            TYPE            PLUG @            TYPE           

COMPLETION & TEST DATA BY PRODUCING FORMATION

FORMATION	Mississippian								<i>Reported to Frac Focus</i>
SPACING & SPACING ORDER NUMBER	640 613529								
CLASS: Oil, Gas, Dry, Inj. Disp, Comm Disp, Svc	Oil								
PERFORATED INTERVALS	5,415-9,489								
ACID/VOLUME	16,500 gal Acid								
FRACTURE TREATMENT (Fluids/Prop Amounts)	40,451 bbls Frac Fluid 466,920 lbs Proppant								

Minimum Gas Allowable (165:10-17-7) Gas Purchaser/Measurer Chesapeake Operating, Inc.  
 OR 1st Sales Date 9/4/2013

INITIAL TEST DATA

INITIAL TEST DATE	9/9/2013					
OIL-BBL/DAY	198					
OIL-GRAVITY ( API)	37.05					
GAS-MCF/DAY	746					
GAS-OIL RATIO CU FT/BBL	3,768					
WATER-BBL/DAY	1,924					
PUMPING OR FLOWING	Artificial Lift					
INITIAL SHUT-IN PRESSURE						
CHOKE SIZE						
FLOW TUBING PRESSURE	175					

A record of the formations drilled through, and pertinent remarks are presented on the reverse. I declare that I have knowledge of the contents of this report and am authorized by my organization to make this report, which was prepared by me or under my supervision and direction, with the data and facts stated herein to be true, correct, and complete to the best of my knowledge and belief.

*Jay Stratton*  
 SIGNATURE JAY STRATTON - DISTRICT MANAGER DATE 9/23/2013 PHONE NUMBER 405-848-8000  
P.O. BOX 18496 OKLAHOMA CITY OK 73154 megan.moravec@chk.com  
 ADDRESS CITY STATE ZIP EMAIL ADDRESS

**PLEASE TYPE OR USE BLACK INK ONLY**  
FORMATION RECORD

Give formation names and tops, if available, or descriptions and thickness of formations drilled through. Show intervals cored or drillstem tested.

LEASE NAME House 35-28-10

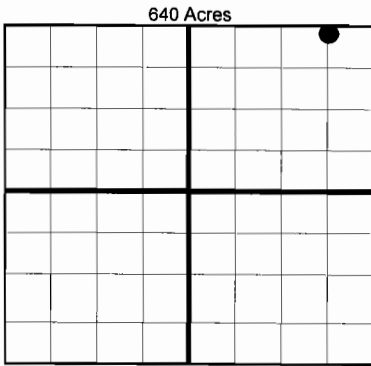
WELL NO. 1H

NAMES OF FORMATIONS	TOP
Mississippian	5,114

FOR COMMISSION USE ONLY	
ITD on file	<input type="checkbox"/> YES <input type="checkbox"/> NO
APPROVED	DISAPPROVED
2) Reject Codes	
_____	
_____	
_____	
_____	

Were open hole logs run?	yes	<input checked="" type="checkbox"/> no
Date Last log was run	_____	
Was CO <sub>2</sub> encountered?	yes	<input checked="" type="checkbox"/> no at what depths?
Was H <sub>2</sub> S encountered?	yes	<input checked="" type="checkbox"/> no at what depths?
Were unusual drilling circumstances encountered?	yes	<input checked="" type="checkbox"/> no
If yes, briefly explain.		
_____		

Other remarks: \_\_\_\_\_  
 \_\_\_\_\_  
 \_\_\_\_\_  
 \_\_\_\_\_  
 \_\_\_\_\_



**BOTTOM HOLE LOCATION FOR DIRECTIONAL HOLE**

SEC	TWP	RGE	COUNTY			
Spot Location	1/4	1/4	1/4	Feet From 1/4 Sec Lines	FSL	FEL
Measured Total Depth	True Vertical Depth		BHL From Lease, Unit, or Property Line:			

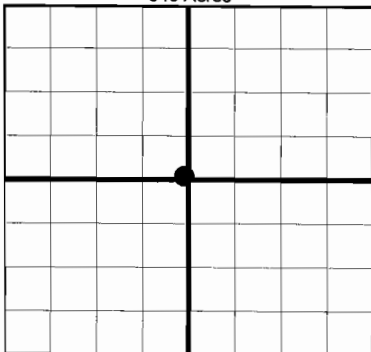
**BOTTOM HOLE LOCATION FOR HORIZONTAL HOLE: (LATERALS)**

SEC	TWP	RGE	COUNTY					
35	28N	10W	Alfalfa					
Spot Location	NW 1/4	NE 1/4	NE 1/4	NE 1/4	Feet From 1/4 Sec Lines	FNL 107	FEL 644	
Depth of Deviation	4,869		Radius of Turn	326	Direction	1	Total Length	4,888
Measured Total Depth	10,002		True Vertical Depth	5,195		BHL From Lease, Unit, or Property Line: 107		

If more than three drainholes are proposed, attach a separate sheet indicating the necessary information.

Direction must be stated in degrees azimuth. Please note, the horizontal drainhole and its end point must be located within the boundaries of the lease or spacing unit.

**Directional surveys are required for all drainholes and directional wells.**



**LATERAL #2**

SEC	TWP	RGE	COUNTY				
Spot Location	1/4	1/4	1/4	1/4	Feet From 1/4 Sec Lines	FSL	FWL
Depth of Deviation	Radius of Turn		Direction		Total Length		
Measured Total Depth	True Vertical Depth		BHL From Lease, Unit, or Property Line:				

**LATERAL #3**

SEC	TWP	RGE	COUNTY				
Spot Location	1/4	1/4	1/4	1/4	Feet From 1/4 Sec Lines	FSL	FWL
Depth of Deviation	Radius of Turn		Direction		Total Length		
Measured Total Depth	True Vertical Depth		BHL From Lease, Unit, or Property Line:				

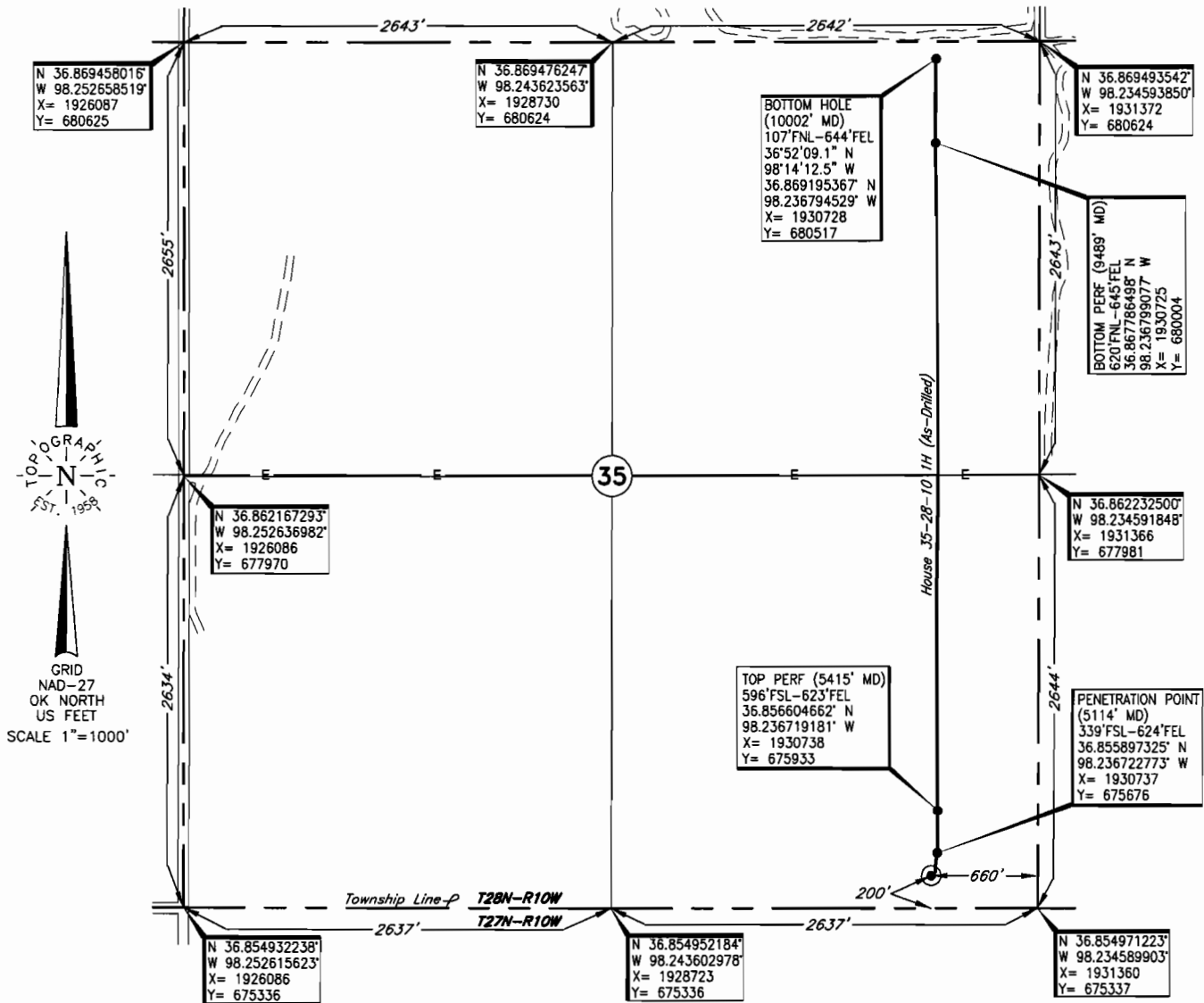
**TOPOGRAPHIC LAND SURVEYORS OF OKLAHOMA**

6709 NORTH CLASSEN BLVD., OKLA. CITY, OKLA. 73116 \* LOCAL (405) 843-4847 \* OUT OF STATE (800) 654-3219  
 Certificate of Authorization No. 1293.

ALFALFA

County, Oklahoma

200'FSL - 660'FEL Section 35 Township 28N Range 10W I.M.



Operator: CHESAPEAKE OPERATING, INC.

Lease Name: HOUSE 35-28-10

Well No.: 1H

**ELEVATION:**

1167' Gr. at Stake

Topography & Vegetation Loc. fell in pasture

Good Drill Site? Yes Reference Stakes or Alternate Location  
 Stakes Set None

Best Accessibility to Location From East off lease road

Distance & Direction  
 from Hwy Jct or Town From Byron, OK, go ±3.0 mi. East on paved road, then ±3.0 mi. South  
to the SE Cor. of Sec. 35-T28N-R10W

DATUM: NAD-27  
 LAT: 36°51'19.9"N  
 LONG: 98°14'12.6"W  
 LAT: 36.855515131° N  
 LONG: 98.236847134° W

STATE PLANE  
 COORDINATES: (US Feet)  
 ZONE: OK NORTH  
 X: 1930700  
 Y: 675536

206042 Date of Drawing: Aug. 15, 2013  
 Invoice # 201858 Date Staked: May 30, 2013 JP

**FINAL AS-DRILLED PLAT**

AS-DRILLED INFORMATION  
 FURNISHED BY CHESAPEAKE OPERATING

This information was gathered with a GPS receiver with ±1.0' accuracy.