

Oklahoma Corporation Commission  
Oil & Gas Conservation Division  
Post Office Box 52000  
Oklahoma City, Oklahoma 73152-2000  
Rule 165: 10-3-25

Form 1002A

API No.: 35045233640000

**Completion Report**

Spud Date: July 02, 2013

OTC Prod. Unit No.: 045-211539

Drilling Finished Date: August 01, 2013

1st Prod Date: September 12, 2013

Completion Date: August 28, 2013

**Drill Type: HORIZONTAL HOLE**

Min Gas Allowable: Yes

Well Name: MKS 10-20-25 1H

Purchaser/Measurer: CHESAPEAKE OPERATING INC

Location: ELLIS 10 20N 25W  
SW SW SW SW  
255 FSL 270 FWL of 1/4 SEC  
Derrick Elevation: 2399 Ground Elevation: 2381

First Sales Date: 09/13/2013

Operator: CHESAPEAKE OPERATING INC 17441  
PO BOX 18496  
6100 N WESTERN AVE  
OKLAHOMA CITY, OK 73154-0496

Completion Type	
X	Single Zone
	Multiple Zone
	Commingled

Location Exception
Order No
610268

Increased Density
Order No
610266

Casing and Cement							
Type	Size	Weight	Grade	Feet	PSI	SAX	Top of CMT
SURFACE	13 3/8	48	J-55	740		810	SURFACE
INTERMEDIATE	9 5/8	36	J-55	1525		530	SURFACE
PRODUCTION	7	26	P-110HC	7647		310	4190

Liner								
Type	Size	Weight	Grade	Length	PSI	SAX	Top Depth	Bottom Depth
LINER	4 1/2	13.5	HCP-110	5371	0	470	7404	12775

**Total Depth: 12775**

Packer	
Depth	Brand & Type
8146	R

Plug	
Depth	Plug Type
12694	PBTD

Initial Test Data										
Test Date	Formation	Oil BBL/Day	Oil-Gravity (API)	Gas MCF/Day	Gas-Oil Ratio Cu FT/BBL	Water BBL/Day	Pumpin or Flowing	Initial Shut-In Pressure	Choke Size	Flow Tubing Pressure
Sep 21, 2013	CLEVELAND	145	43.21	884	6097	60	ARTIFICIA			356

Completion and Test Data by Producing Formation										
Formation Name: CLEVELAND			Code: 405CLVD			Class: OIL				
<b>Spacing Orders</b>				<b>Perforated Intervals</b>						
<b>Order No</b>	<b>Unit Size</b>			<b>From</b>	<b>To</b>					
569662	640			8420	12624					
612994	640									
<b>Acid Volumes</b>				<b>Fracture Treatments</b>						
1,000 GALLONS HCL ACID				40,522 BARRELS FRAC FLUID, 2,036,880 POUNDS PROPPANT						

Formation	Top
CLEVELAND	8212

Were open hole logs run? No

Date last log run:

Were unusual drilling circumstances encountered? No

Explanation:

Other Remarks
OCC: FLE ORDER HAS NOT BEEN ISSUED. WE HAVE ACCEPTED OPERATORS DATA AS SUBMITTED. IRREGULAR SECTION.

Lateral Holes
Sec: 10 TWP: 20N RGE: 25W County: ELLIS
NW NE NW NW
229 FNL 696 FWL of 1/4 SEC
Depth of Deviation: 7807 Radius of Turn: 353 Direction: 360 Total Length: 4563
Measured Total Depth: 12775 True Vertical Depth: 8160 End Pt. Location From Release, Unit or Property Line: 229

FOR COMMISSION USE ONLY
Status: Accepted
1121175

API NO. 35-045-23364  
 OTC PROD.  
 UNIT NO. 045-211539

PLEASE TYPE OR USE BLACK INK ONLY  
 NOTE:  
 Attach copy of original 1002A if recompletion or reentry



RECEIVED  
 648498  
 SEP 26 2013

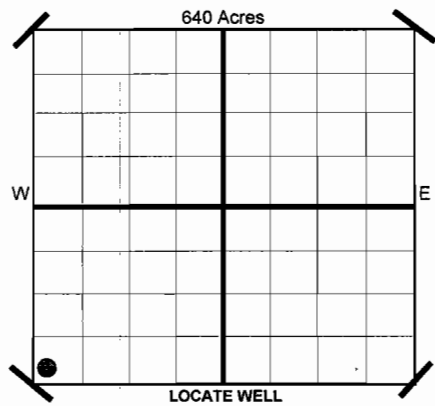
ORIGINAL  
 AMENDED  
 Reason Amended

COMPLETION REPORT

OKLAHOMA CORPORATION  
 COMMISSION

TYPE OF DRILLING OPERATION  
 STRAIGHT HOLE  DIRECTIONAL HOLE  HORIZONTAL HOLE

SPUD DATE	7/2/2013
DRLG FINISHED DATE	8/1/2013
DATE OF WELL COMPLETION	8/28/2013
1ST PROD DATE	9/12/2013
RECOMP DATE	
Longitude (if Known)	
Latitude (if Known)	
WELL NO	1H
FWL OF 1/4 SEC	270
FSL	255
SW 1/4 SW 1/4 SW 1/4 SW 1/4	
Derrick Ft	2,399
Ground	2,381
OPERATOR NAME	CHESAPEAKE OPERATING, INC.
OTC/OCC OPERATOR NO.	17441
ADDRESS	P.O. BOX 18496
CITY	OKLAHOMA CITY
STATE	OK
ZIP	73154



COUNTY	ELLIS	SEC	10	TWP	20N	RGE	25W
LEASE NAME	MKS 10-20-25	WELL NO	1H				
SHL	SW 1/4 SW 1/4 SW 1/4 SW 1/4	FSL	255	FWL OF 1/4 SEC	270		
ELEVATION	Derrick Ft 2,399	Ground	2,381				
OPERATOR NAME	CHESAPEAKE OPERATING, INC.			OTC/OCC OPERATOR NO.	17441		
ADDRESS	P.O. BOX 18496						
CITY	OKLAHOMA CITY	STATE	OK	ZIP	73154		

COMPLETION TYPE

<input checked="" type="checkbox"/> SINGLE ZONE
<input type="checkbox"/> MULTIPLE ZONE Application Date
<input type="checkbox"/> COMMINGLED Application Date
LOCATION EXCEPTION ORDER NO. 610268 (INTERIM)
INCREASED DENSITY ORDER NO. 610266

CASING & CEMENT (Form 1002C must be attached)

TYPE	SIZE	WEIGHT	GRADE	FEET	PSI	SAX	TOP	
CONDUCTOR								
SURFACE	13 3/8"	48#	J-55	740		810	SURFACE	
INTERMEDIATE I	9 5/8"	36#	J-55	1,525		530	SURFACE	
INTERMEDIATE II	7"	26#	P-110HC	7,647		310	4,190	
LINER	4 1/2"	13.5#	HCP-110	7,404-12,775		470	7,736	
							TOTAL DEPTH	12,775

PACKER @ 8.146 BRAND & TYPE R  
 PLUG @ 12.694 TYPE PBDT

COMPLETION & TEST DATA BY PRODUCING FORMATION

FORMATION	CLEVELAND								
SPACING & SPACING ORDER NUMBER	640 569662								
CLASS: Oil, Gas, Dry, Inj, Disp, Comm Disp, Svc	Oil								
PERFORATED INTERVALS	8,420-12,624								
ACID/VOLUME	HCL Acid 1,000 GAL								
FRACTURE TREATMENT (Fluids/Prop Amounts)	Frac Fluid 40,522 BBLs Proppant 2,036,880 LBS								

Minimum Gas Allowable (165:10-17-7) OR Gas Purchaser/Measurer Chesapeake Operating, Inc.  
 Oil Allowable (165:10-13-3) 1st Sales Date 9/13/2013

INITIAL TEST DATA

INITIAL TEST DATE	9/21/2013								
OIL-BBL/DAY	145								
OIL-GRAVITY ( API)	43.21								
GAS-MCF/DAY	884								
GAS-OIL RATIO CU FT/BBL	6,097								
WATER-BBL/DAY	60								
PUMPING OR FLOWING	Artificial Lift								
INITIAL SHUT-IN PRESSURE									
CHOKE SIZE									
FLOW TUBING PRESSURE	356								

A record of the formations drilled through, and pertinent remarks are presented on the reverse. I declare that I have knowledge of the contents of this report and am authorized by my organization to make this report, which was prepared by me or under my supervision and direction, with the data and facts stated herein to be true, correct, and complete to the best of my knowledge and belief.

*Ted Campbell*  
 SIGNATURE NAME (PRINT OR TYPE) Ted Campbell - DISTRICT MANAGER  
 P.O. BOX 18496 OKLAHOMA CITY OK 73154  
 ADDRESS CITY STATE ZIP  
 9/23/2013 DATE  
 405-848-8000 PHONE NUMBER  
 dawn.richardson@chk.com EMAIL ADDRESS

PLEASE TYPE OR USE BLACK INK ONLY  
FORMATION RECORD

Give formation names and tops, if available, or descriptions and thickness of formations drilled through. Show intervals cored or drillstem tested.

LEASE NAME MKS 10-20-25

WELL NO. 1H

NAMES OF FORMATIONS	TOP
CLEVELAND	8,212

FOR COMMISSION USE ONLY

ITD on file  YES  NO

APPROVED \_\_\_\_\_ DISAPPROVED \_\_\_\_\_

2) Reject Codes

\_\_\_\_\_

\_\_\_\_\_

\_\_\_\_\_

\_\_\_\_\_

Were open hole logs run? \_\_\_\_\_ yes  no

Date Last log was run N/A

Was CO<sub>2</sub> encountered? \_\_\_\_\_ yes  no at what depths?

Was H<sub>2</sub>S encountered? \_\_\_\_\_ yes  no at what depths?

Were unusual drilling circumstances encountered? \_\_\_\_\_ yes  no  
If yes, briefly explain.

Other remarks:

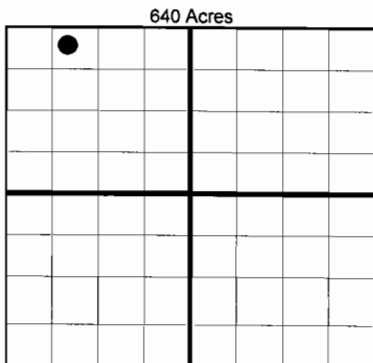
\_\_\_\_\_

\_\_\_\_\_

\_\_\_\_\_

\_\_\_\_\_

\_\_\_\_\_



**BOTTOM HOLE LOCATION FOR DIRECTIONAL HOLE**

SEC	TWP	RGE	COUNTY				
Spot Location	1/4	1/4	1/4	1/4	Feet From 1/4 Sec Lines	FSL	FWL
Measured Total Depth	True Vertical Depth		BHL From Lease, Unit, or Property Line:				

**BOTTOM HOLE LOCATION FOR HORIZONTAL HOLE: (LATERALS)**

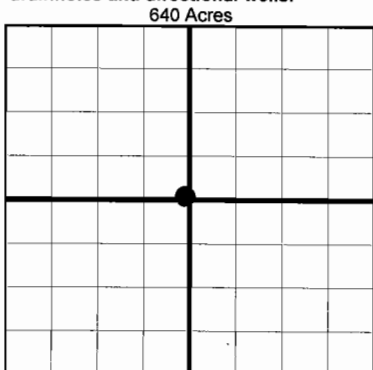
**LATERAL #1**

SEC	TWP	RGE	COUNTY				
10	20N	25W	ELLIS				
Spot Location	NW 1/4	NE 1/4	NW 1/4	NW 1/4	Feet From 1/4 Sec Lines	FNL 229	FWL 696
Depth of Deviation	7,807	Radius of Turn	353	Direction	360	Total Length	4,563
Measured Total Depth	True Vertical Depth		BHL From Lease, Unit, or Property Line:				
	12,775	8,160	229				

If more than three drainholes are proposed, attach a separate sheet indicating the necessary information.

Direction must be stated in degrees azimuth. Please note, the horizontal drainhole and its end point must be located within the boundaries of the lease or spacing unit.

**Directional surveys are required for all drainholes and directional wells.**



**LATERAL #2**

SEC	TWP	RGE	COUNTY				
Spot Location	1/4	1/4	1/4	1/4	Feet From 1/4 Sec Lines	FSL	FWL
Depth of Deviation	Radius of Turn		Direction				Total Length
Measured Total Depth	True Vertical Depth		BHL From Lease, Unit, or Property Line:				

**LATERAL #3**

SEC	TWP	RGE	COUNTY				
Spot Location	1/4	1/4	1/4	1/4	Feet From 1/4 Sec Lines	FSL	FWL
Depth of Deviation	Radius of Turn		Direction				Total Length
Measured Total Depth	True Vertical Depth		BHL From Lease, Unit, or Property Line:				

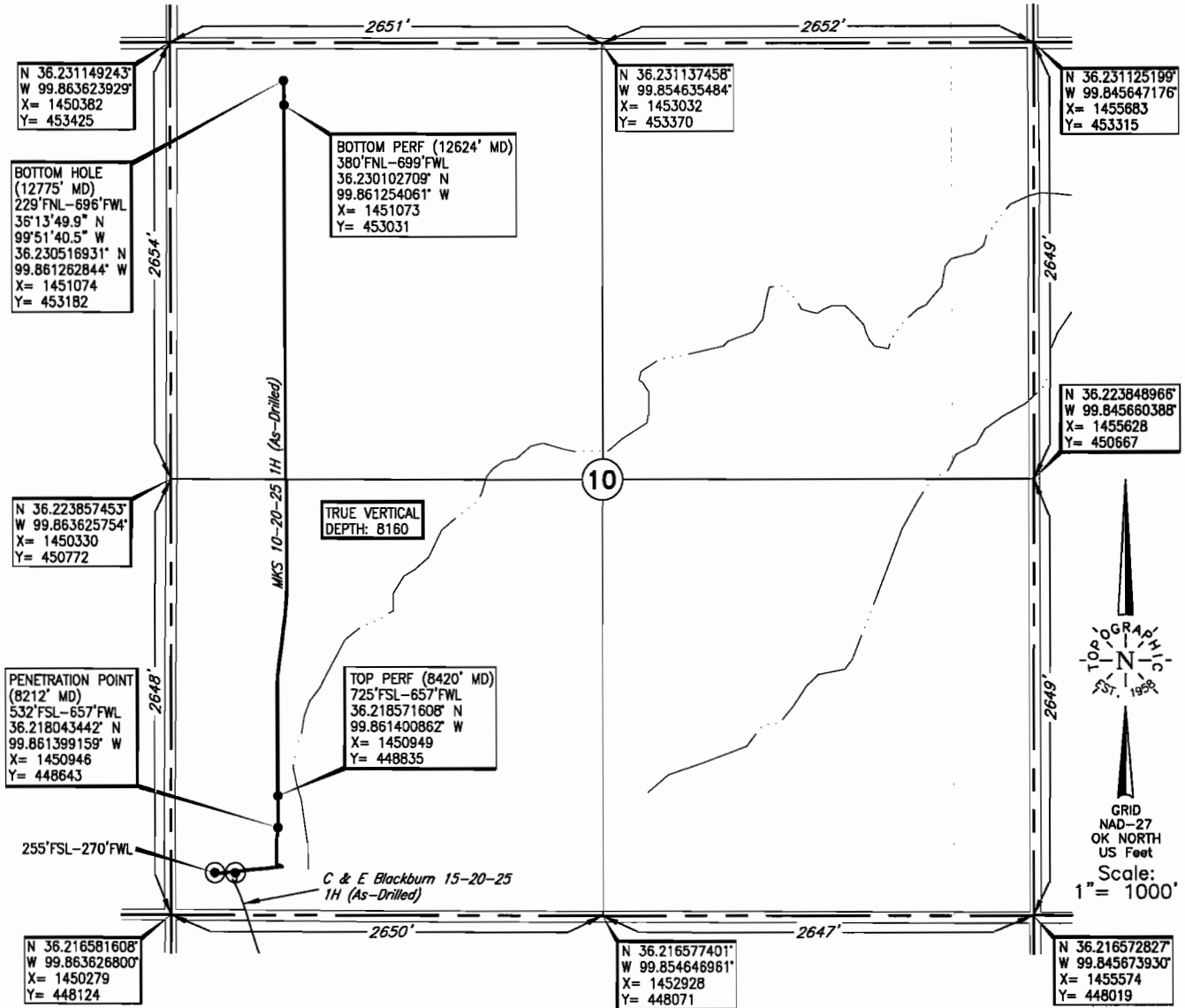
**TOPOGRAPHIC LAND SURVEYORS OF OKLAHOMA**

6709 NORTH CLASSEN BLVD., OKLA. CITY, OKLA. 73116 \* LOCAL (405) 843-4847 \* OUT OF STATE (800) 654-3219  
 Certificate of Authorization No. 1293.

ELLIS

County, Oklahoma

255'FSL-270'FWL Section 10 Township 20N Range 25W I.M.



Operator: CHESAPEAKE OPERATING, INC.  
 Lease Name: MKS 10-20-25

Well No.: 1H **ELEVATION:** 2381' Gr. at Stake

Topography & Vegetation Loc. fell in grassy pasture

Good Drill Site? Yes Reference Stakes or Alternate Location Stakes Set None

Best Accessibility to Location From South off county road  
 Distance & Direction from Hwy Jct or Town From US. Hwy. 283 North and US. Hwy. 60-St. Hwy. 51, go 5.5 miles North on US. Hwy. 283, then 1 mile East to the SW Cor. of Sec. 10-T20N-R25W

DATUM: NAD-27  
 LAT: 36°13'02.2"N  
 LONG: 99°51'45.8"W  
 LAT: 36.217281636  
 LONG: 99.862711402  
 STATE PLANE COORDINATES: (US Feet)  
 ZONE: OK NORTH  
 X: 1450554  
 Y: 448373

206655 Date of Drawing: Aug. 22, 2013  
 Invoice # 195655A Date Staked: Jan. 17, 2013 JP

**FINAL AS-DRILLED PLAT**

AS-DRILLED INFORMATION  
 FURNISHED BY CHESAPEAKE OPERATING

This information was gathered with a GPS receiver with ±1.0' accuracy.