

Oklahoma Corporation Commission
Oil & Gas Conservation Division
Post Office Box 52000
Oklahoma City, Oklahoma 73152-2000
Rule 165: 10-3-25

Form 1002A

API No.: 35105410590000

Completion Report

Spud Date: August 07, 2013

OTC Prod. Unit No.:

Drilling Finished Date: August 08, 2013

1st Prod Date:

Completion Date: September 19, 2013

Drill Type: STRAIGHT HOLE

Well Name: CARTWRIGHT 1W

Purchaser/Measurer:

Location: NOWATA 6 26N 16E
SW NW SW NW
790 FSL 110 FWL of 1/4 SEC
Derrick Elevation: 0 Ground Elevation: 765

First Sales Date:

Operator: AOG OPERATING LLC 23059

1803 E 17TH ST
TULSA, OK 74104-5304

Completion Type	
X	Single Zone
	Multiple Zone
	Commingled

Location Exception
Order No
There are no Location Exception records to display.

Increased Density
Order No
There are no Increased Density records to display.

Casing and Cement							
Type	Size	Weight	Grade	Feet	PSI	SAX	Top of CMT
SURFACE	8.625			103	1000	55	SURFACE
PRODUCTION	4.5	10.5	J-55	810	400	85	SURFACE

Liner								
Type	Size	Weight	Grade	Length	PSI	SAX	Top Depth	Bottom Depth
There are no Liner records to display.								

Total Depth: 810

Packer	
Depth	Brand & Type
749	SEAL TITE

Plug	
Depth	Plug Type
There are no Plug records to display.	

Initial Test Data										
Test Date	Formation	Oil BBL/Day	Oil-Gravity (API)	Gas MCF/Day	Gas-Oil Ratio Cu FT/BBL	Water BBL/Day	Pumpin or Flowing	Initial Shut- In Pressure	Choke Size	Flow Tubing Pressure
There are no Initial Data records to display.										

Completion and Test Data by Producing Formation									
Formation Name: BARTLESVILLE				Code: 404BRVL			Class: DISP		
Spacing Orders				Perforated Intervals					
Order No		Unit Size		From			To		
There are no Spacing Order records to display.				767			793		
Acid Volumes				Fracture Treatments					
300 GALLONS MUD ACID				There are no Fracture Treatments records to display.					

Formation	Top
BARTLESVILLE	765

Were open hole logs run? Yes

Date last log run: August 09, 2013

Were unusual drilling circumstances encountered? No

Explanation:

Other Remarks
UIC PERMIT NUMBER 1400110072

FOR COMMISSION USE ONLY
Status: Accepted
1121061

API NO. 105-41059
OTC PROD.
UNIT NO.

PLEASE TYPE OR USE BLACK
NOTE:

Attach copy of original
if recompletion or retest

AS SUBMITTED

RECEIVED

SEP 23 2013

Form 1002A
Rev. 2009

OHMA CORPORATION
COMMISSION

☒ ORIGINAL
☐ AMENDED (Reason)

COMPLETION REPORT

TYPE OF DRILLING OPERATION

☒ STRAIGHT HOLE ☐ DIRECTIONAL HOLE ☐ HORIZONTAL HOLE
☐ SERVICE WELL

If directional or horizontal, see reverse for bottom hole location.

COUNTY	Nowata	SEC	6	TWP	26N	RGE	16E
LEASE NAME	Cartwright			WELL NO.	1W		
SW 1/4 NW 1/4 SW 1/4 NW 1/4	FSL OF 1/4 SEC	790'	FWL OF 1/4 SEC	110'			
ELEVATION	Ground	765'	Latitude (if known)	Longitude (if known)			
OPERATOR NAME	AOG OPERATING, LLC			OTC/OCC OPERATOR NO.	23059		
ADDRESS	1803 E. 17th St.						
CITY	Tulsa	STATE	OK	ZIP	74104		

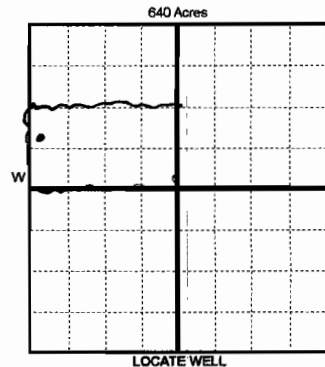
SPUD DATE 8/7/2013

DRLG FINISHED DATE 8/8/2013

DATE OF WELL COMPLETION 9/19/2013

1st PROD DATE N/A

RECOMP DATE N/A



COMPLETION TYPE

☒ SINGLE ZONE
☐ MULTIPLE ZONE
Application Date
☐ COMMINGLED
Application Date
EXCEPTION ORDER NO.
INCREASED DENSITY ORDER NO.

CASING & CEMENT (Form 1002C must be attached)

TYPE	SIZE	WEIGHT	GRADE	FEET	PSI	SAX	TOP OF CMT
CONDUCTOR							
SURFACE	8.625"			103'	100#	55	Surface
INTERMEDIATE							
PRODUCTION	4.5"	10.5	J-55	810'	400	85	Surface
LINER							

PACKER @ 749' BRAND & TYPE Seal Title PLUG @ TYPE PLUG @ TYPE
PACKER @ BRAND & TYPE PLUG @ TYPE PLUG @ TYPE
TOTAL DEPTH 810

COMPLETION & TEST DATA BY PRODUCING FORMATION

FORMATION	Bartlesville
SPACING & SPACING ORDER NUMBER	
CLASS: Oil, Gas, Dry, Inj, Disp, Comm Disp, Svc	Disp.
PERFORATED INTERVALS	767-777'
	783-793'
ACID VOLUME	300 gall mud acid
FRACTURE TREATMENT (Fluids/Prop Amounts)	

Min Gas Allowable (165:10-17-7)

Gas Purchaser/Measurer



OR

First Sales Date

INITIAL TEST DATA

Oil Allowable (165:10-13-3)

INITIAL TEST DATE	None - Disposal
OIL-BBL/DAY	
OIL-GRAVITY (API)	
GAS-MCF/DAY	
GAS-OIL RATIO CU FT/BBL	
WATER-BBL/DAY	
PUMPING OR FLOWING	
INITIAL SHUT-IN PRESSURE	
CHOKE SIZE	
FLOW TUBING PRESSURE	

A record of the formations drilled through, and pertinent remarks are presented on the reverse. I declare that I have knowledge of the contents of this report and am authorized by my organization to make this report, which was prepared by me or under my supervision and direction, with the data and facts stated herein to be true, correct, and complete to the best of my knowledge and belief.

SIGNATURE Douglas Smith DATE 9/19/2013 PHONE NUMBER 512-497-4496
ADDRESS 1803 E. 17th St. CITY Tulsa STATE OK ZIP 74104 EMAIL ADDRESS custin@aspectoil.com

PLEASE TYPE OR USE BLACK INK ONLY

FORMATION RECORD

Give formation names and tops, if available, or descriptions and thickness of formations drilled through. Show intervals cored or drillstem tested.

NAMES OF FORMATIONS	TOP
Bartlesville	765'-800'

LEASE NAME

Cordwright #111

WELL NO.

FOR COMMISSION USE ONLY

ITD on file ☐ YES ☐ NO

APPROVED ☐ DISAPPROVED ☐

2) Reject Codes

Were open hole logs run? ☒ yes ☐ no

Date Last log was run 8/4/2013

Was CO₂ encountered? ☐ yes ☒ no at what depths? _____

Was H₂S encountered? ☐ yes ☒ no at what depths? _____

Were unusual drilling circumstances encountered? ☐ yes ☒ no

If yes, briefly explain below

Other remarks:

UIC Permit # 1400110072

640 Acres

If more than three drainholes are proposed, attach a separate sheet indicating the necessary information.

Direction must be stated in degrees azimuth. Please note, the horizontal drainhole and its end point must be located within the boundaries of the lease or spacing unit.

Directional surveys are required for all drainholes and directional wells.

640 Acres

BOTTOM HOLE LOCATION FOR DIRECTIONAL HOLE

SEC	TWP	RGE	COUNTY
Spot Location	1/4	1/4	1/4
Measured Total Depth	True Vertical Depth		
Feet From 1/4 Sec Lines FSL			
BHL From Lease, Unit, or Property Line: FWL			

BOTTOM HOLE LOCATION FOR HORIZONTAL HOLE: (LATERALS)

LATERAL #1

SEC	TWP	RGE	COUNTY
Spot Location	1/4	1/4	1/4
Depth of Deviation	Radius of Turn		
Measured Total Depth	True Vertical Depth		
Feet From 1/4 Sec Lines FSL			
Direction Total Length			
BHL From Lease, Unit, or Property Line: FWL			

LATERAL #2

SEC	TWP	RGE	COUNTY
Spot Location	1/4	1/4	1/4
Depth of Deviation	Radius of Turn		
Measured Total Depth	True Vertical Depth		
Feet From 1/4 Sec Lines FSL			
Direction Total Length			
BHL From Lease, Unit, or Property Line: FWL			

LATERAL #3

SEC	TWP	RGE	COUNTY
Spot Location	1/4	1/4	1/4
Depth of Deviation	Radius of Turn		
Measured Total Depth	True Vertical Depth		
Feet From 1/4 Sec Lines FSL			
Direction Total Length			
BHL From Lease, Unit, or Property Line: FWL			