

Oklahoma Corporation Commission  
Oil & Gas Conservation Division  
Post Office Box 52000  
Oklahoma City, Oklahoma 73152-2000  
Rule 165: 10-3-25

Form 1002A

API No.: 35149216760002

**Completion Report**

Spud Date: May 12, 2013

OTC Prod. Unit No.: 149211010

Drilling Finished Date: June 22, 2013

1st Prod Date: July 14, 2013

Completion Date: July 12, 2013

**Drill Type: HORIZONTAL HOLE**

Well Name: MCNATT 18-11-18 3H

Purchaser/Measurer: CHESAPEAKE OPERATING INC

Location: WASHITA 19 11N 18W  
NW NW NW NE  
230 FNL 2365 FEL of 1/4 SEC  
Derrick Elevation: 1787 Ground Elevation: 1766

First Sales Date: 07/14/2013

Operator: CHESAPEAKE OPERATING INC 17441  
PO BOX 18496  
6100 N WESTERN AVE  
OKLAHOMA CITY, OK 73154-0496

Completion Type	
X	Single Zone
	Multiple Zone
	Commingled

Location Exception	
Order No	
	608739
	614833

Increased Density	
Order No	
	608738

Casing and Cement							
Type	Size	Weight	Grade	Feet	PSI	SAX	Top of CMT
SURFACE	9 5/8	40	P-110	1500		658	SURFACE
INTERMEDIATE	7	26	P-110EC	12012		369	8900
PRODUCTION	4 1/2	13.5	HCP-110	17499		720	11512

Liner								
Type	Size	Weight	Grade	Length	PSI	SAX	Top Depth	Bottom Depth
There are no Liner records to display.								

**Total Depth: 17499**

Packer	
Depth	Brand & Type
There are no Packer records to display.	

Plug	
Depth	Plug Type
There are no Plug records to display.	

Initial Test Data										
Test Date	Formation	Oil BBL/Day	Oil-Gravity (API)	Gas MCF/Day	Gas-Oil Ratio Cu FT/BBL	Water BBL/Day	Pumpin or Flowing	Initial Shut-In Pressure	Choke Size	Flow Tubing Pressure
Jul 20, 2013	DES MOINES GRANITE WASH	321	55.38	5380	16760	2022	FLOWING		22/64	3486

Completion and Test Data by Producing Formation		
Formation Name: DES MOINES GRANITE WASH	Code: 404DMSGW	Class: GAS
<b>Spacing Orders</b>		<b>Perforated Intervals</b>
<b>Order No</b>	<b>Unit Size</b>	<b>From</b> <b>To</b>
281578	640	12775      17387
<b>Acid Volumes</b>		<b>Fracture Treatments</b>
10,000 GALLONS ACID		71,723 BARRELS FRAC FLUID, 4,259,520 POUNDS PROPPANT

Formation	Top
DES MOINES GRANITE WASH	12439

Were open hole logs run? No

Date last log run:

Were unusual drilling circumstances encountered? No

Explanation:

Other Remarks
IRREGULAR SECTION.

Lateral Holes
Sec: 18 TWP: 11N RGE: 18W County: WASHITA
NW NW NW NE
236 FNL 2519 FEL of 1/4 SEC
Depth of Deviation: 12171 Radius of Turn: 372 Direction: 352 Total Length: 5060
Measured Total Depth: 17499 True Vertical Depth: 12543 End Pt. Location From Release, Unit or Property Line: 236

FOR COMMISSION USE ONLY
Status: Accepted
1120594

API NO. 35-149-21676  
 OTC PROD.  
 UNIT NO. 149-211010

PLEASE TYPE OR USE BLACK INK ONLY  
 NOTE:  
 Attach copy of original 1002A if recompleting



ISSION RECEIVED Form 1002A Rev. 2009

AUG 14 2013

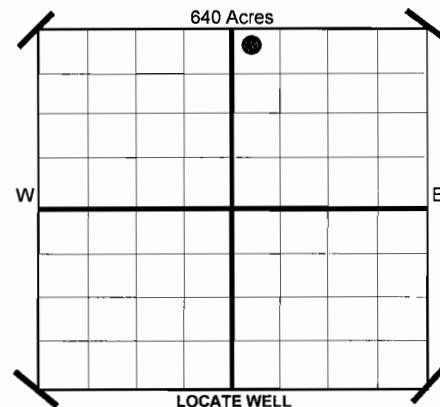
OKLAHOMA CORPORATION COMMISSION

ORIGINAL  
 AMENDED  
 Reason Amended  
 TYPE OF DRILLING OPERATION  
 STRAIGHT HOLE  DIRECTIONAL HOLE  HORIZONTAL HOLE  
 SERVICE WELL

COMPLETION REPORT

If directional or horizontal, see reverse for bottom hole location.

COUNTY	Washita	SEC	19	TWP	11N	RGE	18W	SPUD DATE	5/12/2013
LEASE NAME	McNatt 18-11-18	WELL NO	3H	DRLG FINISHED DATE	6/22/2013	DATE OF WELL COMPLETION	7/12/2013	1ST PROD DATE	7/14/2013
SHL	NW 1/4 NW 1/4 NW 1/4 NE 1/4	FNL	230	FEL OF	1/4 SEC	2,365	RECOMP DATE		
ELEVATION	Derrick Fl 1,787 Ground 1,766	Latitude (if Known)		Longitude (if Known)					
OPERATOR NAME	CHESAPEAKE OPERATING, INC.	OTC/OCC OPERATOR NO.	17441						
ADDRESS	P.O. BOX 18496								
CITY	OKLAHOMA CITY	STATE	OK	ZIP	73154				



COMPLETION TYPE

SINGLE ZONE  
 MULTIPLE ZONE  
 Application Date  
 COMMINGLED  
 Application Date  
 LOCATION EXCEPTION ORDER NO. 608739 (interim)  
 INCREASED DENSITY ORDER NO. 608738

CASING & CEMENT (Form 1002C must be attached)

TYPE	SIZE	WEIGHT	GRADE	FEET	PSI	SAX	TOP
CONDUCTOR							
SURFACE	9-5/8"	40#	P-110	1,500		658	Surface
INTERMEDIATE 1	7"	26#	P-110EC	12,012		369	8,900
PRODUCTION	4-1/2"	13.5#	HCP-110	17,499		720	11,512
LINER							
							17,499

PACKER @ \_\_\_\_\_ BRAND & TYPE \_\_\_\_\_ PLUG @ \_\_\_\_\_ TYPE \_\_\_\_\_ PLUG @ \_\_\_\_\_ TYPE \_\_\_\_\_  
 PACKER @ \_\_\_\_\_ BRAND & TYPE \_\_\_\_\_ PLUG @ \_\_\_\_\_ TYPE \_\_\_\_\_ PLUG @ \_\_\_\_\_ TYPE \_\_\_\_\_

COMPLETION & TEST DATA BY PRODUCING FORMATION

FORMATION	Des Moines Granite Wash						
SPACING & SPACING ORDER NUMBER	640 281578						
CLASS: Oil, Gas, Dry, Inj. Disp, Comm Disp, Svc	Gas						
PERFORATED INTERVALS	12,775-17-,387						
ACID/VOLUME	10,000 gal Acid						
FRACTURE TREATMENT (Fluids/Prop Amounts)	71,723 bbls Frac Fluid 4,259,520 lbs Proppant						

404 DMS 6W

Reported to Edge Focus

Minimum Gas Allowable (165:10-17-7) OR  Gas Purchaser/Measurer  
 Oil Allowable (165:10-13-3) 1st Sales Date

Chesapeake Operating, Inc.  
 7/14/2013

INITIAL TEST DATA

INITIAL TEST DATE	7/20/2013				
OIL-BBL/DAY	321				
OIL-GRAVITY ( API)	55.38				
GAS-MCF/DAY	5,380				
GAS-OIL RATIO CU FT/BBL	16,760				
WATER-BBL/DAY	2,022				
PUMPING OR FLOWING	Flowing				
INITIAL SHUT-IN PRESSURE					
CHOKE SIZE	22/64				
FLOW CASING PRESSURE	3,486				

A record of the formations drilled through, and pertinent remarks are presented on the reverse. I declare that I have knowledge of the contents of this report and am authorized by my organization to make this report, which was prepared by me or under my supervision and direction, with the data and facts stated herein to be true, correct, and complete to the best of my knowledge and belief.

SIGNATURE: *Michael Park* MICHAEL PARK - DISTRICT MANAGER 8/9/2013 405-848-8000  
 NAME (PRINT OR TYPE) DATE PHONE NUMBER  
 P.O. BOX 18496 OKLAHOMA CITY OK 73154 megan.moravec@chk.com  
 ADDRESS CITY STATE ZIP EMAIL ADDRESS

PLEASE TYPE OR USE BLACK INK ONLY  
FORMATION RECORD

Give formation names and tops, if available, or descriptions and thickness of formations drilled through. Show intervals cored or drillstem tested.

LEASE NAME McNatt 18-11-18

WELL NO. 3H

NAMES OF FORMATIONS	TOP
Des Moines Granite Wash	12,439

FOR COMMISSION USE ONLY	
ITD on file	<input type="checkbox"/> YES <input type="checkbox"/> NO
APPROVED	DISAPPROVED
2) Reject Codes	
_____	
_____	
_____	
_____	

Were open hole logs run?	yes	<input checked="" type="checkbox"/>	no
Date Last log was run	_____		
Was CO <sub>2</sub> encountered?	yes	<input checked="" type="checkbox"/>	no at what depths?
Was H <sub>2</sub> S encountered?	yes	<input checked="" type="checkbox"/>	no at what depths?
Were unusual drilling circumstances encountered?	yes	<input checked="" type="checkbox"/>	no
If yes, briefly explain.			

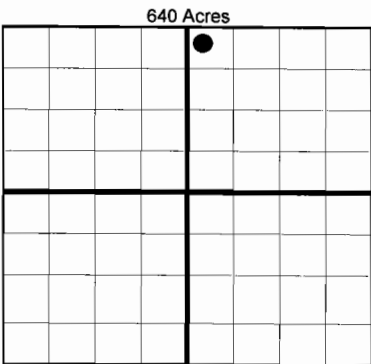
Other remarks:

\_\_\_\_\_

\_\_\_\_\_

\_\_\_\_\_

\_\_\_\_\_



**BOTTOM HOLE LOCATION FOR DIRECTIONAL HOLE**

SEC	TWP	RGE	COUNTY
Spot Location			
1/4	1/4	1/4	1/4
Measured Total Depth	True Vertical Depth	BHL From Lease, Unit, or Property Line:	

**BOTTOM HOLE LOCATION FOR HORIZONTAL HOLE: (LATERALS)**

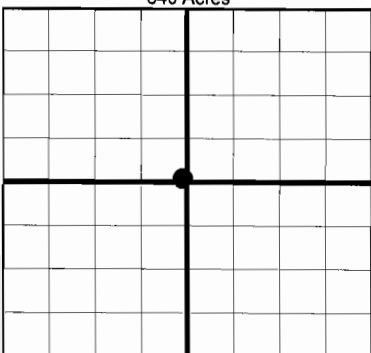
**LATERAL #1**

SEC	TWP	RGE	COUNTY
18	11N	18W	Washita
Spot Location			
NW 1/4	NW 1/4	NW 1/4	NE 1/4
Depth of Deviation	Radius of Turn	Direction	Total Length
12,171	372	352	5,060
Measured Total Depth	True Vertical Depth	BHL From Lease, Unit, or Property Line:	
17,499	12,543	236	

If more than three drainholes are proposed, attach a separate sheet indicating the necessary information.

Direction must be stated in degrees azimuth. Please note, the horizontal drainhole and its end point must be located within the boundaries of the lease or spacing unit.

**Directional surveys are required for all drainholes and directional wells.**



**LATERAL #2**

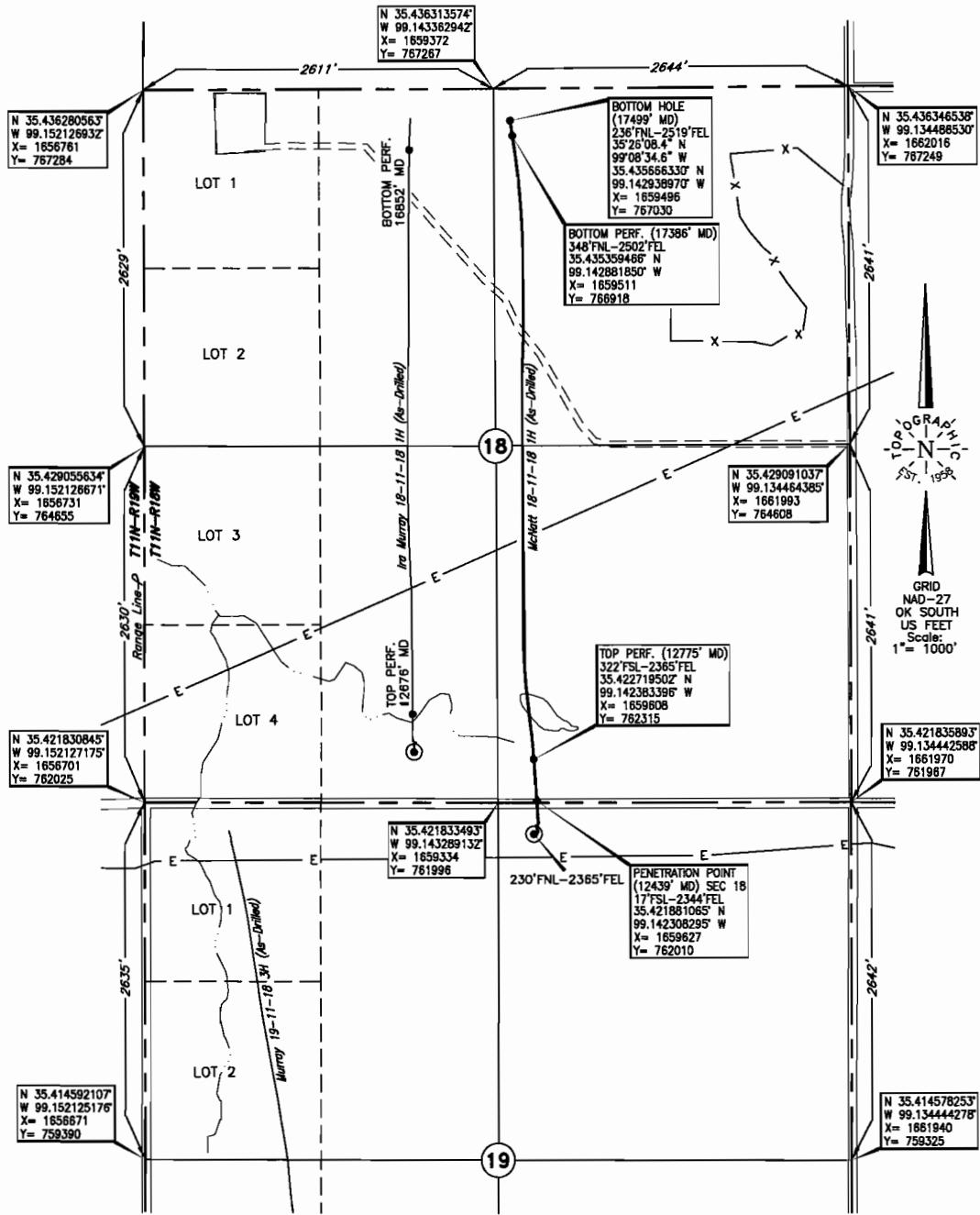
SEC	TWP	RGE	COUNTY
Spot Location			
1/4	1/4	1/4	1/4
Depth of Deviation	Radius of Turn	Direction	Total Length
Measured Total Depth	True Vertical Depth	BHL From Lease, Unit, or Property Line:	

**LATERAL #3**

SEC	TWP	RGE	COUNTY
Spot Location			
1/4	1/4	1/4	1/4
Depth of Deviation	Radius of Turn	Direction	Total Length
Measured Total Depth	True Vertical Depth	BHL From Lease, Unit, or Property Line:	

**TOPOGRAPHIC LAND SURVEYS OF OKLAHOMA**  
 6709 NORTH CLASSEN BLVD., OKLA. CITY, OKLA. 73116 • LOCAL (405) 843-4847 • OUT OF STATE (800) 654-3219  
 Certificate of Authorization No. 1293

WASHITA County, Oklahoma  
 230° FNL-2365° FEL Section 19 Township 11N Range 18W I.M.



Operator: CHESAPEAKE OPERATING, INC.  
 Lease Name: McNatt 18-11-18 Well No.: 3H **ELEVATION:** 1766' Gr. at Stake  
 Topography & Vegetation Loc. fell in wheat field, ±145' North of E-W Enogex pipeline  
 Good Drill Site? Yes Reference Stakes or Alternate Location Stakes Set None  
 Best Accessibility to Location From North off county road  
 Distance & Direction From Custer-Washita county line on St. Hwy. 44, go ±3 miles South on St. Hwy. 44,  
then ±2 miles East to the NE Cor. of Sec. 19-T11N-R18W

(This information was gathered with a GPS receiver with ±1.0' accuracy.)  
 DATUM: NAD-27  
 LAT: 35°25'16.3"N  
 LONG: 99°08'32.6"W  
 LAT: 35.421202109°  
 LONG: 99.142379598°  
 STATE PLANE COORDINATES: (US Feet)  
 ZONE: OK SOUTH  
 X: 1659603  
 Y: 761763

204802 Date of Drawing: July 24, 2013  
 Invoice # 197216 Date Staked: Feb. 20, 2013 JP

**FINAL AS-DRILLED PLAT**

AS-DRILLED INFORMATION  
 FURNISHED BY CHESAPEAKE OPERATING