

Oklahoma Corporation Commission
Oil & Gas Conservation Division
Post Office Box 52000
Oklahoma City, Oklahoma 73152-2000
Rule 165: 10-3-25

Form 1002A

API No.: 35047246370000

Completion Report

Spud Date: December 08, 2012

OTC Prod. Unit No.: 047-210020

Drilling Finished Date: January 12, 2013

1st Prod Date: March 09, 2013

Completion Date: March 04, 2013

Drill Type: HORIZONTAL HOLE

Min Gas Allowable: Yes

Well Name: TOMCAT 1-12H

Purchaser/Measurer: PVR GAS PROCESSING LLC

Location: GARFIELD 12 21N 3W
NW NW NE NE
250 FNL 1110 FEL of 1/4 SEC
Derrick Elevation: 1155 Ground Elevation: 1137

First Sales Date: 03/01/2013

Operator: LIMESTONE EXPLORATION II LLC 23066
PO BOX 10280
1100 W WALL ST
MIDLAND, TX 79702-7280

Completion Type	
X	Single Zone
	Multiple Zone
	Commingled

Location Exception	
Order No	
	609545
	611510

Increased Density	
Order No	
There are no Increased Density records to display.	

Casing and Cement							
Type	Size	Weight	Grade	Feet	PSI	SAX	Top of CMT
CONDUCTOR	20	94	H-40	70		9	SURFACE
SURFACE	9 5/8	36	J-55	505		265	SURFACE
PRODUCTION	7	26	P-110	5404		330	2400

Liner								
Type	Size	Weight	Grade	Length	PSI	SAX	Top Depth	Bottom Depth
LINER	4 1/2	11.6	P-110	4411	0	0	5076	9487

Total Depth: 9488

Packer	
Depth	Brand & Type
There are no Packer records to display.	

Plug	
Depth	Plug Type
There are no Plug records to display.	

Initial Test Data										
Test Date	Formation	Oil BBL/Day	Oil-Gravity (API)	Gas MCF/Day	Gas-Oil Ratio Cu FT/BBL	Water BBL/Day	Pumpin or Flowing	Initial Shut-In Pressure	Choke Size	Flow Tubing Pressure
Jun 03, 2013	MISSISSIPPIAN	27	37.5	829	30704	3183	PUMPING		64	275

Completion and Test Data by Producing Formation										
Formation Name: MISSISSIPPIAN			Code: 359MSSP			Class: GAS				
Spacing Orders				Perforated Intervals						
Order No		Unit Size		From			To			
604242		640		5562			9058			
Acid Volumes				Fracture Treatments						
1,548 BARRELS 15% HCL				64,516 BARRELS SLICK WATER, 1,267,900 POUNDS 20/40 SAND						

Formation	Top
HOGSHOOTER	4366
BIG LIME	4746
1ST OSWEGO	4805
RED FORK	5200
MISSISSIPPIAN	5288

Were open hole logs run? Yes

Date last log run: January 13, 2013

Were unusual drilling circumstances encountered? No

Explanation:

Other Remarks
MOST HEEL-WARD OPEN HOLE PACKER @ 5,474 MD. MOST TOE-WARD OPEN HOLE PACKER @ 8,358 MD (UNABLE TO SET DEEPER DUE TO RESTRICTION IN OPEN HOLE). FRAC PORTS AT THE FOLLOWING MEASURED DEPTHS: 5,562', 5,738', 5,913', 6,089', 6,265', 6,441', 6,616', 6,835', 7,053', 7,271', 7,489', 7,707', 7,967', 8,228', 9,058'. THERE IS A "TANGENT" SECTION IN THE WELLBORE FROM 4,975' TO 5,069' MD AT AN APPROXIMATE INCLINATION OF 48 DEGREES. OCC - THIS WELL IS AN OPEN HOLE COMPLETION FROM BOTTOM OF 7" CASING AT 5,404' TO TERMINUS AT 9,488'. IRREGULAR SECTION.

Lateral Holes

Sec: 12 TWP: 21N RGE: 3W County: GARFIELD

SE SW SE SE

292 FSL 663 FEL of 1/4 SEC

Depth of Deviation: 4427 Radius of Turn: 851 Direction: 175 Total Length: 3884

Measured Total Depth: 9488 True Vertical Depth: 5128 End Pt. Location From Release, Unit or Property Line: 292

FOR COMMISSION USE ONLY

1119663

Status: Accepted

API NO. 35-047-24637
 OTC PROD. UNIT NO. 0472100200000

PLEASE TYPE OR USE BLACK INK
 NOTE:

Attach copy of original 1002C
 if recompletion or reentry

AS SUBMITTED

RECEIVED

JUN 07 2013

Form 1002A
 Rev. 2009

OKLAHOMA CORPORATION
 COMMISSION

ORIGINAL
 AMENDED (Reason)

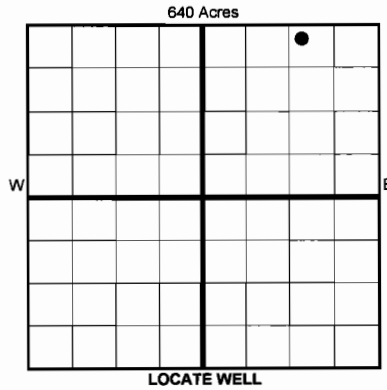
COMPLETION REPORT

TYPE OF DRILLING OPERATION

STRAIGHT HOLE DIRECTIONAL HOLE HORIZONTAL HOLE
 SERVICE WELL

If directional or horizontal, see reverse for bottom hole location.

COUNTY	Garfield	SEC	12	TWP	21N	RGE	03W	SPUD DATE	12/08/2012
LEASE NAME	Tomcat	WELL NO.	1-12H	DRLG FINISHED DATE	01/12/2013	DATE OF WELL COMPLETION	03/04/2013	1st PROD DATE	03/09/2013
NW 1/4	NW 1/4	NE 1/4	NE 1/4	FNL OF 1/4 SEC	250	FEL OF 1/4 SEC	1,110	RECOMP DATE	
ELEVATION N Derrick	1,155	Ground	1,137	Latitude (if known)	36.317509 N			Longitude (if known)	97.464554 W
OPERATOR NAME	Limestone Exploration II, LLC			OTC/OCC OPERATOR NO.	23066				
ADDRESS	P.O. Box 10280								
CITY	Midland	STATE	TX	ZIP	79702-7280				



COMPLETION TYPE

<input checked="" type="checkbox"/> SINGLE ZONE	Mississippian
<input type="checkbox"/> MULTIPLE ZONE	
Application Date	
<input type="checkbox"/> COMMINGLED	
Application Date	
LOCATION EXCEPTION ORDER INCREASED DENSITY ORDER NO.	609545 Final

CASING & CEMENT (Form 1002C must be attached)

TYPE	SIZE	WEIGHT	GRADE	FEET	PSI	SAX	TOP OF CMT	
CONDUCTOR	20"	94 lb/ft	H-40	70		0	n/a	
SURFACE	9 5/8"	36 lb/ft	J-55	505		265	surface	
INTERMEDIATE	7"	26 lb/ft	P-110	5,404		330	2,400	
PRODUCTION								
LINER	4 1/2"	11.6 lb/ft	P-110	5,076 - 9,487 MD		0	n/a	
							TOTAL DEPTH	9,488

PACKER @ _____ BRAND & TYPE _____ PLUG @ _____ TYPE _____ PLUG @ _____ TYPE _____
 PACKER @ _____ BRAND & TYPE _____ PLUG @ _____ TYPE _____ PLUG @ _____ TYPE _____

COMPLETION & TEST DATA BY PRODUCING FORMATION

FORMATION	Mississippian			
SPACING & SPACING ORDER NUMBER	640 ac - 604242			
CLASS: Oil, Gas, Dry, Inj, Disp, Comm Disp, Svc	Gas			
PERFORATED INTERVALS	OH pkr/frac port system			
	5,423 - 9,488 MD			
	15 frac ports			
ACID/VOLUME	1,548 bbl 15% HCl			
FRACTURE TREATMENT (Fluids/Prop Amounts)	64,516 bbls slick wtr			
	1,267,900 lb 20/40 sd			

Min Gas Allowable (165:10-17-7)

Gas Purchaser/Measurer

PVR Gas Processing, LLC

OR

First Sales Date

March 2013

INITIAL TEST DATA

INITIAL TEST DATE	6/3/2013			
OIL-BBL/DAY	27			
OIL-GRAVITY (API)	37.5			
GAS-MCF/DAY	829			
GAS-OIL RATIO CU FT/BBL	31,084			
WATER-BBL/DAY	3,183			
PUMPING OR FLOWING	pumping via ESP			
INITIAL SHUT-IN PRESSURE	0			
CHOKE SIZE	64			
FLOW TUBING PRESSURE	275 psi (pumping)			

A record of the formations drilled through, and pertinent remarks are presented on the reverse. I declare that I have knowledge of the contents of this report and am authorized by my organization to make this report, which was prepared by me or under my supervision and direction, with the data and facts stated herein to be true, correct, and complete to the best of my knowledge and belief.

	Bruce Burdett	6/3/2013	(432) 687 4220
SIGNATURE	NAME (PRINT OR TYPE)	DATE	PHONE NUMBER
P.O. Box 10280	Midland TX 79702-7280	bburdett@limestone2.com	
ADDRESS	CITY STATE ZIP	EMAIL ADDRESS	

PLEASE TYPE OR USE BLACK INK ONLY
FORMATION RECORD

Give formation names and tops, if available, or descriptions and thickness of formations drilled through. Show intervals cored or drillstem tested.

NAMES OF FORMATIONS	TOP
Hogshooter	4,366 MD
Big Lime	4,746 MD
1st Oswego	4,805 MD
Red Fork	5,200 MD
Mississippian	5,288 MD

LEASE NAME Tomcat WELL NO. 1-12H

FOR COMMISSION USE ONLY	
ITD on file <input type="checkbox"/> YES <input type="checkbox"/> NO	
APPROVED _____	DISAPPROVED _____
2) Reject Codes _____ _____ _____ _____	

Were open hole logs run? yes no

Date Last log was run 01/13/2013

Was CO₂ encountered? yes no at what depths? _____

Was H₂S encountered? yes no at what depths? _____

Were unusual drilling circumstances encountered? yes no
 If yes, briefly explain below _____

Other remarks: Most heel-ward openhole packer @ 5,474 MD. Most toe-ward openhole packer @ 8,358 MD (unable to set deeper due to restriction in open hole). Frac ports at the following measured depths: 5562, 5738, 5913, 6089, 6265, 6441, 6616, 6835, 7053, 7271, 7489, 7707, 7967, 8228, 9058.

There is a "tangent" section in the wellbore from 4,975 to 5,069 MD at an approximate inclination of 48 degrees. *OCC this well is an open hole completion from bottom of 7" casing at 5404' to terminus at 9488*

640 Acres

BOTTOM HOLE LOCATION FOR DIRECTIONAL HOLE

SEC	TWP	RGE	COUNTY				
Spot Location	1/4	1/4	1/4	1/4	Feet From 1/4 Sec Lines	FSL	FWL
Measured Total Depth	True Vertical Depth		BHL From Lease, Unit, or Property Line:				

If more than three drainholes are proposed, attach a separate sheet indicating the necessary information.

Direction must be stated in degrees azimuth. Please note, the horizontal drainhole and its end point must be located within the boundaries of the lease or spacing unit.

Directional surveys are required for all drainholes and directional wells.

640 Acres

BOTTOM HOLE LOCATION FOR HORIZONTAL HOLE: (LATERALS)

LATERAL #1

SEC	TWP	RGE	COUNTY						
12	21N	03W	Garfield						
Spot Location	SE 1/4	SW 1/4	SE 1/4	SE 1/4	Feet From 1/4 Sec Lines	FSL	292	FEL	663
Depth of Deviation	KOP @ 4,427 MD		Radius of Turn	851	Direction	175	Total Length	3,884	
Measured Total Depth	9,488		True Vertical Depth	5,128 @ TMD		BHL From Lease, Unit, or Property Line: 292' FSL 663' FEL of Sec 12			

LATERAL #2

SEC	TWP	RGE	COUNTY						
Spot Location	1/4	1/4	1/4	1/4	Feet From 1/4 Sec Lines	FSL	FWL		
Depth of Deviation	Radius of Turn		Direction		Total Length				
Measured Total Depth	True Vertical Depth		BHL From Lease, Unit, or Property Line:						

LATERAL #3

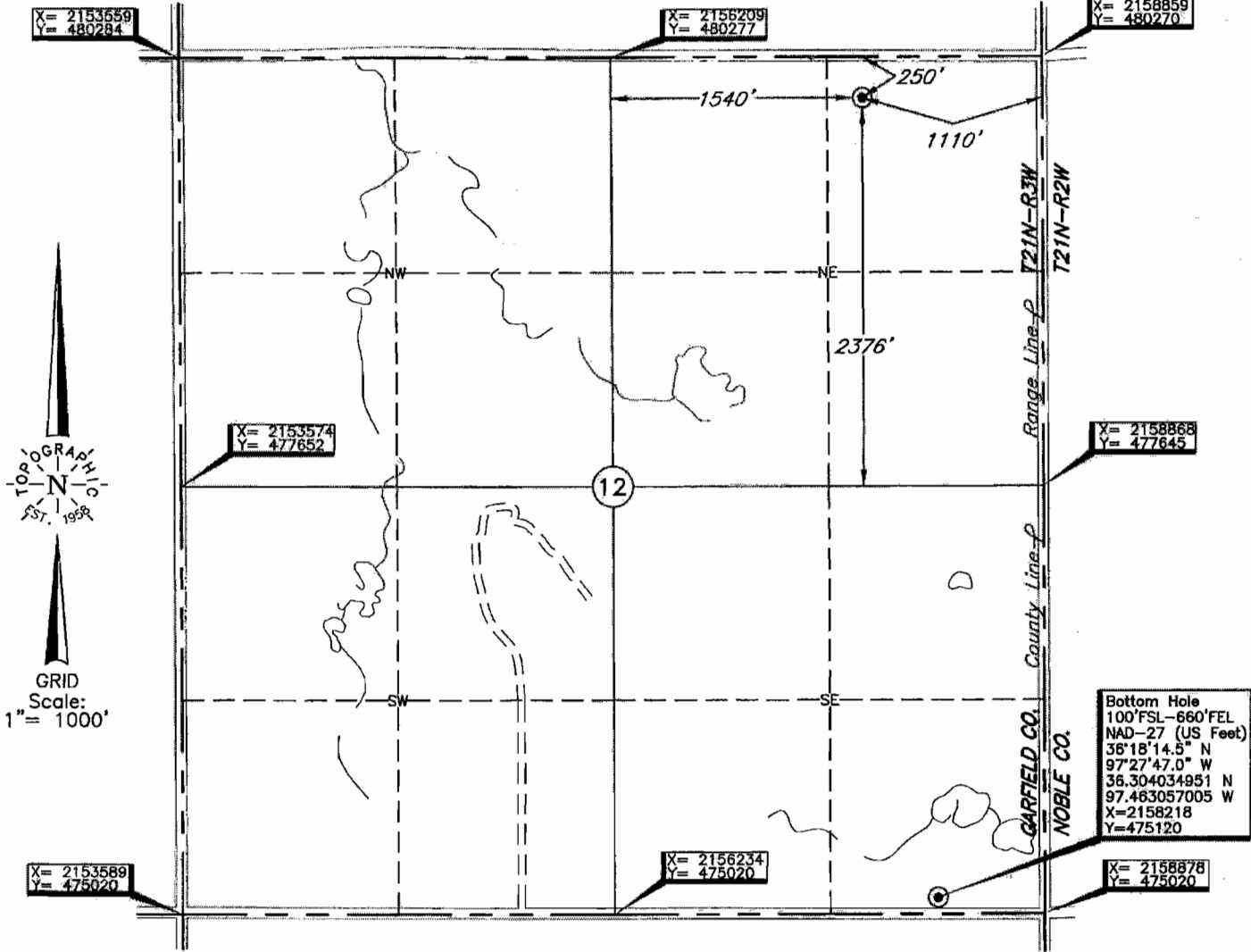
SEC	TWP	RGE	COUNTY						
Spot Location	1/4	1/4	1/4	1/4	Feet From 1/4 Sec Lines	FSL	FWL		
Depth of Deviation	Radius of Turn		Direction		Total Length				
Measured Total Depth	True Vertical Depth		BHL From Lease, Unit, or Property Line:						

TOPOGRAPHIC LAND SURVEYORS OF OKLAHOMA
 6709 NORTH CLASSEN BLVD., OKLA. CITY, OKLA. 73116 * LOCAL (405) 843-4847 * OUT OF STATE (800) 654-3219
 Certificate of Authorization No. 1293.

GARFIELD

County, Oklahoma

250'FNL-1110'FEL Section 12 Township 21N Range 3W I.M.



Bottom Hole, Landing Point and Drill Path Information
 Provided by Operator Listed, NOT Surveyed.
 Distance Between Drill Paths are Calculated and Corner
 Coordinates are Taken from Points Surveyed in the Field.

Distances shown in (parenthesis) are calculated based upon the Quarter Section being 2640 feet, those shown in [brackets] are based on GLO (General Land Office) distances and have NOT been measured on the ground.

Operator: LIMESTONE EXPLORATION II, LLC

Lease Name: TOMCAT

Well No.: 1-12H

ELEVATION:
1137' Gr. at Stake

Topography & Vegetation Loc. fell in rolling pasture

Good Drill Site? Yes Reference Stakes or Alternate Location
 Stakes Set None

Best Accessibility to Location From North off county road

Distance & Direction
 from Hwy Jct or Town From Covington, OK, go 6 mi. East, then 1 mi. North to the NW

Cor. of Sec. 12--T21N-R3W.

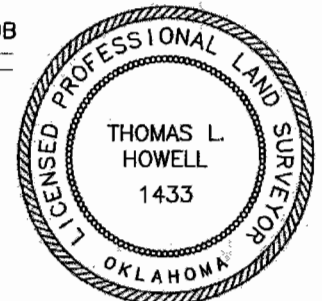
DATUM: NAD-27
 LAT: 36°19'03.0"N
 LONG: 97°27'52.4"W
 LAT: 36.317509318 N
 LONG: 97.464553781 W
 STATE PLANE
 COORDINATES (US Feet)
 ZONE: OK NORTH
 X: 2157750
 Y: 480023

Invoice # 191174 Date of Drawing: Oct. 10, 2012
 Date Staked: Oct. 9, 2012 DB

CERTIFICATE:

I, Thomas L. Howell a Oklahoma Licensed Land Surveyor and an authorized agent of Topographic Land Surveyors of Oklahoma, do hereby certify that the above described well location was surveyed and staked on the ground as shown herein.

Thomas L. Howell
 Oklahoma Lic. No. 1433



This information was gathered with a GPS receiver with Sub-Meter accuracy.

7113

API NO. 35-047-24637
OTC PROD. UNIT NO. 047210020

PLEASE TYPE OR USE BLACK INK
NOTE:

Attach copy of original 1002C
if recompletion or reentry

AS SUBMITTED

RECEIVED

Form 1002A
Rev. 2009

JUN 07 2013

OKLAHOMA CORPORATION
COMMISSION

1016EZ

ORIGINAL
 AMENDED (Reason)

A: 210020 I

COMPLETION REPORT

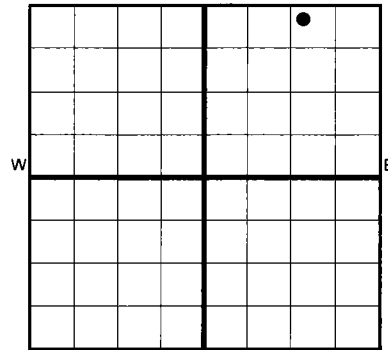
TYPE OF DRILLING OPERATION

STRAIGHT HOLE DIRECTIONAL HOLE HORIZONTAL HOLE
 SERVICE WELL

If directional or horizontal, see reverse for bottom hole location.

COUNTY	Garfield	SEC	12	TWP	21N	RGE	03W	SPUD DATE	12/08/2012
LEASE NAME	Tomcat	WELL NO.	1-12H	DRLG FINISHED DATE	01/12/2013	DATE OF WELL COMPLETION	03/04/2013	1st PROD DATE	03/09/2013
NW 1/4	NW 1/4	NE 1/4	NE 1/4	FNL OF 1/4 SEC	250	FEL OF 1/4 SEC	1,110	RECOMP DATE	
ELEVATIO N Derrick	1,155	Ground	1,137	Latitude (if known)	36.317509 N	Longitude (if known)	97.464554 W		
OPERATOR NAME	Limestone Exploration II, LLC			OTC/OCC OPERATOR NO.	23066				
ADDRESS	P.O. Box 10280			DEVON		20751			
CITY	Midland	STATE	TX	ZIP	79702-7280				

640 Acres



LOCATE WELL

COMPLETION TYPE

<input checked="" type="checkbox"/> SINGLE ZONE	Mississippian
<input type="checkbox"/> MULTIPLE ZONE	
Application Date	
<input type="checkbox"/> COMMINGLED	
Application Date	
LOCATION	609545 Final
EXCEPTION ORDER	
INCREASED DENSITY ORDER NO.	

CASING & CEMENT (Form 1002C must be attached)

TYPE	SIZE	WEIGHT	GRADE	FEET	PSI	SAX	TOP OF CMT	
CONDUCTOR	20"	94 lb/ft	H-40	70		0	n/a	
SURFACE	9 5/8"	36 lb/ft	J-55	505		265	surface	
INTERMEDIATE	7"	26 lb/ft	P-110	5,404		330	2,400	
PRODUCTION								
LINER	4 1/2"	11.6 lb/ft	P-110	5,076 - 9,487 MD		0	n/a	
							TOTAL DEPTH	9,488

PACKER @ _____ BRAND & TYPE _____ PLUG @ _____ TYPE _____ PLUG @ _____ TYPE _____
PACKER @ _____ BRAND & TYPE _____ PLUG @ _____ TYPE _____ PLUG @ _____ TYPE _____

COMPLETION & TEST DATA BY PRODUCING FORMATION

FORMATION	Mississippian				
SPACING & SPACING ORDER NUMBER	640 ac - 604242				
CLASS: Oil, Gas, Dry, Inj, Disp, Comm Disp, Svc	Gas				
PERFORATED INTERVALS	OH pkr/frac port system				
	5,423 - 9,488 MD				
	15 frac ports				
ACID/VOLUME	1,548 bbl 15% HCl				
FRACTURE TREATMENT (Fluids/Prop Amounts)	64,516 bbls slick wtr				
	1,267,900 lb 20/40 sd				

Min Gas Allowable (165:10-17-7)

Gas Purchaser/Measurer
First Sales Date

PVR Gas Processing, LLC

INITIAL TEST DATA

INITIAL TEST DATE	6/3/2013				
OIL-BBL/DAY	27				
OIL-GRAVITY (API)	37.5				
GAS-MCF/DAY	829				
GAS-OIL RATIO CU FT/BBL	31,084				
WATER-BBL/DAY	3,183				
PUMPING OR FLOWING	pumping via ESP				
INITIAL SHUT-IN PRESSURE	0				
CHOKE SIZE	64				
FLOW TUBING PRESSURE	275 psi (pumping)				

A record of the formations drilled through, and pertinent remarks are presented on the reverse. I declare that I have knowledge of the contents of this report and am authorized by my organization to make this report, which was prepared by me or under my supervision and direction, with the data and facts stated herein to be true, correct, and complete to the best of my knowledge and belief.

SIGNATURE	Bruce Burdett	DATE	6/3/2013	PHONE NUMBER	(432) 687 4220
ADDRESS	P.O. Box 10280	CITY	Midland	STATE	TX
		ZIP	79702-7280	EMAIL ADDRESS	bburdett@limestone2.com

SCANNED

Handwritten initials/signature