

Oklahoma Corporation Commission
Oil & Gas Conservation Division
Post Office Box 52000
Oklahoma City, Oklahoma 73152-2000
Rule 165: 10-3-25

Form 1002A

API No.: 35047246280000

Completion Report

Spud Date: October 09, 2012

OTC Prod. Unit No.: 047-209788

Drilling Finished Date: November 24, 2012

1st Prod Date: January 15, 2013

Completion Date: January 06, 2013

Drill Type: HORIZONTAL HOLE

Min Gas Allowable: Yes

Well Name: SPITFIRE 1-26H

Purchaser/Measurer: PVR MIDSTREAM LLC

Location: GARFIELD 26 21N 3W
NW NE NE NE
250 FNL 485 FEL of 1/4 SEC
Latitude: 36.2742069 Longitude: 97.4806383
Derrick Elevation: 1165 Ground Elevation: 1147

First Sales Date:

Operator: LIMESTONE EXPLORATION II LLC 23066
PO BOX 10280
1100 W WALL ST
MIDLAND, TX 79702-7280

Completion Type	
X	Single Zone
	Multiple Zone
	Commingled

Location Exception
Order No
609132

Increased Density
Order No
There are no Increased Density records to display.

Casing and Cement							
Type	Size	Weight	Grade	Feet	PSI	SAX	Top of CMT
CONDUCTOR	20	94	H-40	70		9	SURFACE
SURFACE	9 5/8	36	J-55	510		265	SURFACE
PRODUCTION	7	26	P-110	5782		300	3500

Liner								
Type	Size	Weight	Grade	Length	PSI	SAX	Top Depth	Bottom Depth
LINER	4 1/2	11.6	P-110	3889	0	0	5571	9460

Total Depth: 9467

Packer	
Depth	Brand & Type
There are no Packer records to display.	

Plug	
Depth	Plug Type
There are no Plug records to display.	

Initial Test Data										
Test Date	Formation	Oil BBL/Day	Oil-Gravity (API)	Gas MCF/Day	Gas-Oil Ratio Cu FT/BBL	Water BBL/Day	Pumpin or Flowing	Initial Shut-In Pressure	Choke Size	Flow Tubing Pressure
Feb 22, 2013	MISSISSIPPIAN	87	37	599	6885	5644	PUMPING		64	225

Completion and Test Data by Producing Formation										
Formation Name: MISSISSIPPIAN			Code: 359MSSP			Class: OIL				
Spacing Orders				Perforated Intervals						
Order No	Unit Size			From			To			
601761	640			There are no Perf. Intervals records to display.						
Acid Volumes				Fracture Treatments						
1,548 BARRELS 15% HCL				64,516 BARRELS SLICK WATER, 1,267,900 POUNDS 20/40 SAND						

Formation	Top
HOGSHOOTER	4544
BIG LIME	4924
OSWEGO	4984
MISSISSIPPIAN	5676

Were open hole logs run? No

Date last log run: November 24, 2012

Were unusual drilling circumstances encountered? Yes

Explanation: DRILL STRING ENCOUNTERED A CAVERN / VOID FROM 9,462' - 9,467' MD.

Other Remarks
WELL IS COMPLETED WITH HALLIBURTON COMPLETION TOOLS COMPRISED OF: LINER HANGER / PACKER @ 5,570'; CASED HOLE PACKER @ 5,667'; OPEN HOLE PACKERS @ 5,883', 6,140', 6,394', 6,648, 6,959', 7,113', 7,369', 7,626', 7,837', 8,092', 8,353', 8,614', 8,829', 9,078', 9,332'; 15 FRAC SLEEVES (ALL SLEEVES OPEN, EXCEPT AS NOTED OTHERWISE) @ 6,013', 6,267', 6,524', 6,774', 6,982', 7,238', 7,495', 7,714', 7,968', 8,222', 8,483', 8,740', 8,951', 9,204' (UNOPENED) AND 9,373'. A CAST IRON BRIDGE PLUG WAS SET IN THE 4 1/2" LINER @ 9,120' TO ISOLATE A WATER-BEING INTERVAL. EFFECTIVE COMPLETED INTERVAL IS 5,883' (THE MOST HEEL-WARD OPEN HOLE PACKER) TO 9,078' (THE FIRST OPEN HOLE PACKER UPHOLE FROM THE CIBP SET @ 9,120'). IRREGULAR SECTION.

Lateral Holes

Sec: 26 TWP: 21N RGE: 3W County: GARFIELD

SW NW SE SE

803 FSL 1118 FEL of 1/4 SEC

Depth of Deviation: 4672 Radius of Turn: 748 Direction: 215 Total Length: 3667

Measured Total Depth: 9467 True Vertical Depth: 5390 End Pt. Location From Release, Unit or Property Line: 803

FOR COMMISSION USE ONLY

1118893

Status: Accepted

AS SUBMITTED

RECEIVED

Form 1002A
Rev. 2009

MAR 08 2013

OKLAHOMA CORPORATION
COMMISSIONAPI NO. 35-047-24628
OTC PROD. UNIT NO. 047209788PLEASE TYPE OR USE BLACK
NOTE:Attach copy of original
if recompletion or reentry.

Oklahoma City, Oklahoma 73102-2000

Rule 165:10-3-25

 ORIGINAL
 AMENDED (Reason)

COMPLETION REPORT

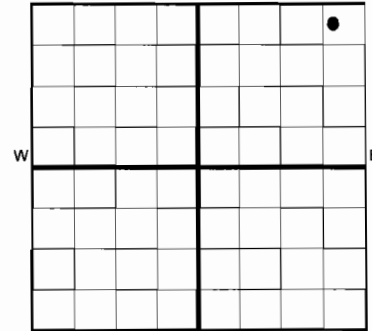
TYPE OF DRILLING OPERATION

 STRAIGHT HOLE DIRECTIONAL HOLE HORIZONTAL HOLE
 SERVICE WELL

If directional or horizontal, see reverse for bottom hole location.

COUNTY	Garfield	SEC	26	TWP	21N	RGE	03W	SPUD DATE	10/9/2012
LEASE NAME	Spitfire			WELL NO.	1-26H			DRLG FINISHED DATE	11/24/2012
NW 1/4	NE 1/4	NE 1/4	NE 1/4	FNL OF 1/4 SEC	250	FEL OF 1/4 SEC	485	DATE OF WELL COMPLETION	1/6/2013
ELEVATIO N Demick	1,165	Ground	1,147	Latitude (if known)	36.2742069			1st PROD DATE	1/15/2013
OPERATOR NAME	Limestone Exploration II, LLC			OTC/OCC OPERATOR NO.	23066				
ADDRESS	P.O. Box 10280								
CITY	Midland	STATE	TX	ZIP	79702-7280				

640 Acres



COMPLETION TYPE

<input checked="" type="checkbox"/>	SINGLE ZONE	Mississippi Lime
<input type="checkbox"/>	MULTIPLE ZONE	Application Date
<input type="checkbox"/>	COMMINGLED	Application Date
LOCATION EXCEPTION ORDER <u>609132 602674</u>		
INCREASED DENSITY ORDER NO.		

CASING & CEMENT (Form 1002C must be attached)

TYPE	SIZE	WEIGHT	GRADE	FEET	PSI	SAX	TOP OF CMT	
CONDUCTOR	20"	94 lb/ft	H-40	70		0	n/a	
SURFACE	9 5/8"	36 lb/ft	J-55	501		265	surface	
INTERMEDIATE	7"	26 lb/ft	P-110	5,800		300	3,500	
PRODUCTION								
LINER	4 1/2"	11.6 lb/ft	P-110	5,571 - 9,460 MD		0	n/a	
							TOTAL DEPTH	9,467

PACKER @ _____ BRAND & TYPE _____ PLUG @ _____ TYPE _____ PLUG @ _____ TYPE _____
PACKER @ _____ BRAND & TYPE _____ PLUG @ _____ TYPE _____ PLUG @ _____ TYPE _____

COMPLETION & TEST DATA BY PRODUCING FORMATION

FORMATION	Mississippi Lime <i>Mississippian</i>
SPACING & SPACING ORDER NUMBER	640 ac - 601761
CLASS: Oil, Gas, Dry, Inj, Disp, Comm Disp, Svc	Oil
PERFORATED INTERVALS	Uncemented Liner <i>open hole</i> 5,883 - 9,078 MD
	(see Other Remarks)
ACID/VOLUME	1,548 bbl 15% HCl
FRACTURE TREATMENT (Fluids/Prop Amounts)	64,516 bbls slick wtr 1,267,900 lb 20/40 sd



Min Gas Allowable (165:10-17-7)

OR

Oil Allowable (165:10-13-3)

Gas Purchaser/Measurer

First Sales Date

PVR Midstream, LLC

sales line not yet available

INITIAL TEST DATA

INITIAL TEST DATE	2/22/2013
OIL-BBL/DAY	87
OIL-GRAVITY (API)	37
GAS-MCF/DAY	599
GAS-OIL RATIO CU FT/BBL	6,885
WATER-BBL/DAY	5,644
PUMPING OR FLOWING	pumping via ESP
INITIAL SHUT-IN PRESSURE	0
CHOKE SIZE	64
FLOW TUBING PRESSURE	225 psi (pumping)

A record of the formations drilled through, and pertinent remarks are presented on the reverse. I declare that I have knowledge of the contents of this report and am authorized by my organization to make this report, which was prepared by me or under my supervision and direction, with the data and facts stated herein to be true, correct, and complete to the best of my knowledge and belief.

<i>Bruce Burdett</i>	Bruce Burdett	3/5/2013	(432) 687 4220
SIGNATURE	NAME (PRINT OR TYPE)	DATE	PHONE NUMBER
P.O. Box 10280	Midland TX 79702-7280	bburdett@limestone2.com	
ADDRESS	CITY STATE ZIP	EMAIL ADDRESS	

PLEASE TYPE OR USE BLACK INK ONLY
FORMATION RECORD

Give formation names and tops, if available, or descriptions and thickness of formations drilled through. Show intervals cored or drillstem tested.

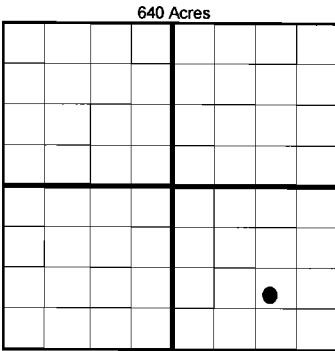
LEASE NAME Spitfire WELL NO. 1-26H

NAMES OF FORMATIONS	TOP
Hogshooter	4,544 MD
Big Lime	4,924 MD
Oswego	4,984 MD
Mississippian	5,676 MD

FOR COMMISSION USE ONLY		
ITD on file	<input type="checkbox"/> YES	<input type="checkbox"/> NO
APPROVED	DISAPPROVED	2) Reject Codes

Were open hole logs run?	___ yes	<input checked="" type="checkbox"/> no
Date Last log was run	<u>11/24/2012 (MWD GR)</u>	
Was CO ₂ encountered?	___ yes	<input checked="" type="checkbox"/> no at what depths? _____
Was H ₂ S encountered?	___ yes	<input checked="" type="checkbox"/> no at what depths? _____
Were unusual drilling circumstances encountered?	<input checked="" type="checkbox"/> yes ___ no	
If yes, briefly explain below		
Drill string encountered a cavern/void from 9462 to 9467' MD		

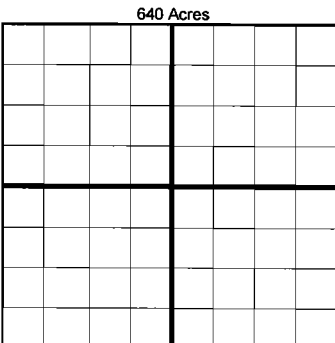
Other remarks: Well is completed with Halliburton completion tools comprised of: liner hanger/packer @ 5570; cased hole packer @ 5667; openhole packers @ 5883, 6140, 6394, 6648, 6859, 7113, 7369, 7626, 7837, 8092, 8353, 8614, 8829, 9078, 9332; 15 frac sleeves (all sleeves open, except as noted otherwise) @ 6013, 6267, 6524, 6774, 6982, 7238, 7495, 7714, 7968, 8222, 8483, 8740, 8951, 9204 (unopened), and 9373. A cast iron bridge plug was set in the 4 1/2" liner @ 9120 to isolate a water-bearing interval. Effective completed interval is 5883 (the most heel-ward openhole packer) to 9078 (the first openhole packer uphole from the CIBP set @ 9120).



If more than three drainholes are proposed, attach a separate sheet indicating the necessary information.

Direction must be stated in degrees azimuth. Please note, the horizontal drainhole and its end point must be located within the boundaries of the lease or spacing unit.

Directional surveys are required for all drainholes and directional wells.



BOTTOM HOLE LOCATION FOR DIRECTIONAL HOLE

SEC	TWP	RGE	COUNTY
Spot Location			
1/4	1/4	1/4	1/4
Measured Total Depth		True Vertical Depth	BHL From Lease, Unit, or Property Line:

BOTTOM HOLE LOCATION FOR HORIZONTAL HOLE: (LATERALS)

LATERAL #1

SEC	TWP	RGE	COUNTY
26	21N	03W	Garfield
Spot Location			
SW 1/4	NW 1/4	SE 1/4	SE 1/4
Depth of Deviation		Radius of Turn	Direction
KOP @ 4,672 MD		748	215, then 182
Measured Total Depth		True Vertical Depth	Total Length
9,467		5,390 @ TMD	3,667
BHL From Lease, Unit, or Property Line:			
807' FSL 1169' FEL of Sec 26			

LATERAL #2

SEC	TWP	RGE	COUNTY
Spot Location			
1/4	1/4	1/4	1/4
Depth of Deviation		Radius of Turn	Direction
Measured Total Depth		True Vertical Depth	Total Length
BHL From Lease, Unit, or Property Line:			

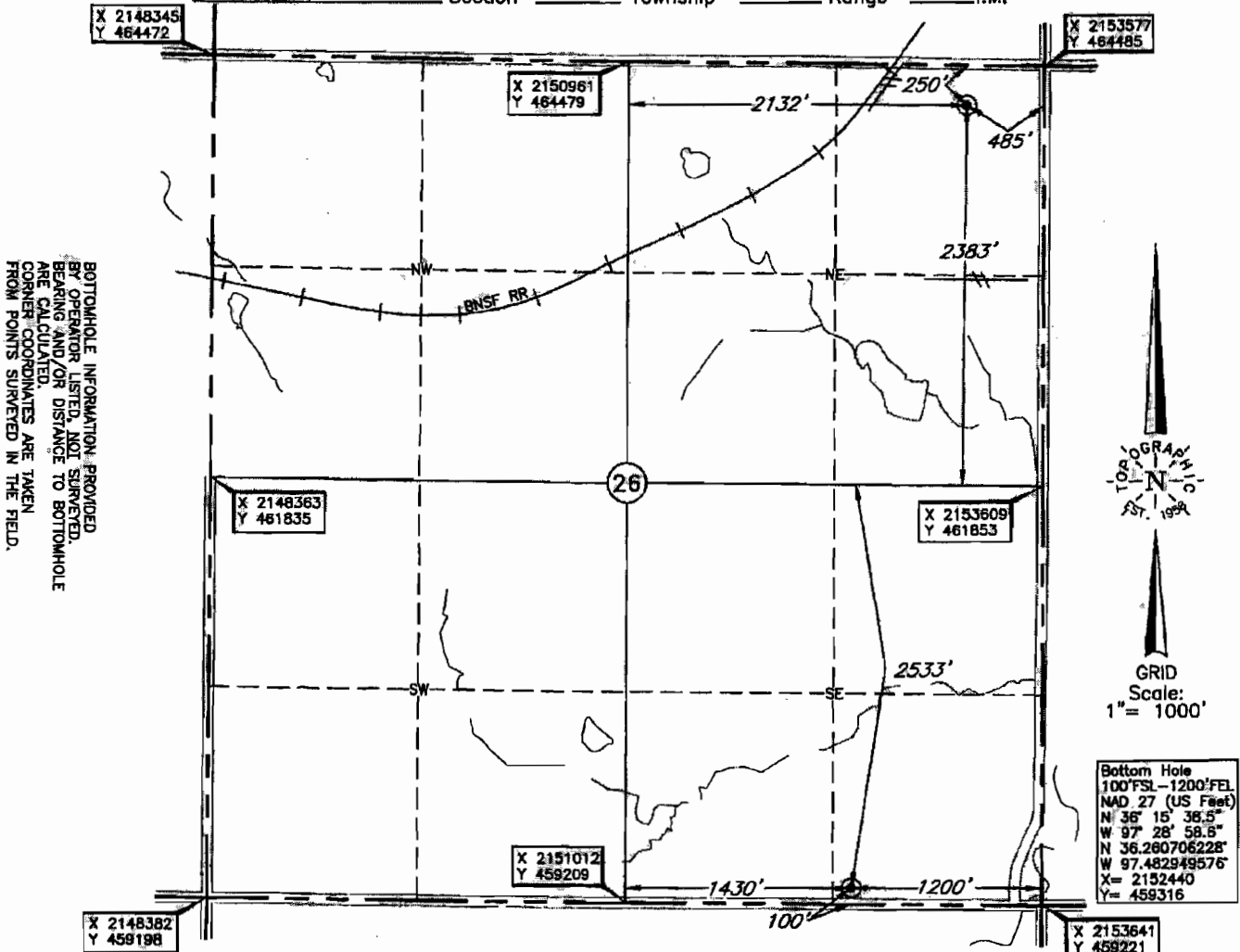
LATERAL #3

SEC	TWP	RGE	COUNTY
Spot Location			
1/4	1/4	1/4	1/4
Depth of Deviation		Radius of Turn	Direction
Measured Total Depth		True Vertical Depth	Total Length
BHL From Lease, Unit, or Property Line:			

TOPOGRAPHIC LAND SURVEYORS OF OKLAHOMA
 6709 NORTH CLASSEN BLVD., OKLA. CITY, OKLA. 73116 * LOCAL (405) 843-4847 * OUT OF STATE (800) 654-3219
 Certificate of Authorization No. 1293.

API
047-24628

GARFIELD County, Oklahoma
 250' FNL - 485' FEL Section 26 Township 21N Range 3W I.M.



BOTTOMHOLE INFORMATION PROVIDED BY OPERATOR LISTED, NOT SURVEYED. BEARING AND/OR DISTANCE TO BOTTOMHOLE ARE CALCULATED. CORNER COORDINATES ARE TAKEN FROM POINTS SURVEYED IN THE FIELD.

Bottom Hole
 100' FSL - 1200' FEL
 NAD 27 (US Feet)
 N 36° 15' 36.5"
 W 97° 28' 58.8"
 N 36.260706228"
 W 97.482949576"
 X = 2152440
 Y = 459316

Distances shown in (parenthesis) are calculated based upon the Quarter Section being 2640 feet, those shown in [brackets] are based on GLO (General Land Office) distances and have NQI been measured on the ground.

Operator: LIMESTONE EXPLORATION II, LLC Well No.: 1-26H **ELEVATION:** 1147' Gr. at Stake
 Lease Name: SPITFIRE

Topography & Vegetation Loc. fell in rolling pasture.

Good Drill Site? Yes Reference Stakes or Alternate Location Stakes Set None

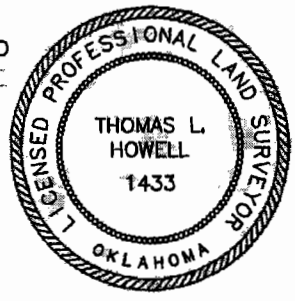
Best Accessibility to Location From county road North of location.
 Distance & Direction from Hwy Jct or Town From Covington, Oklahoma, go 7.5 mi. SE-E on St. Hwy. 164, then 0.5 mi. South to the NE Corner of Section 26, T21N-R3W.

SCANNED

DATUM: NAD-27
 LAT: 36°16'27.1"N
 LONG: 97°28'50.3"W
 LAT: 36.274206940°
 LONG: 97.480638283°
 STATE PLANE COORDINATES: (US Feet)
 ZONE: OK NORTH
 X: 2153095
 Y: 464234

Date of Drawing: Sep. 21, 2012
 Invoice # 190174 Date Staked: Sep. 19, 2012 AD

CERTIFICATE:
 I, Thomas L. Howell a Oklahoma Licensed Land Surveyor and an authorized agent of Topographic Land Surveyors of Oklahoma, do hereby certify that the above described well location was surveyed and staked on the ground as shown herein.
 Oklahoma Lic. No. 1433



This information was gathered with a GPS receiver with Sub-Meter accuracy.