

Oklahoma Corporation Commission
Oil & Gas Conservation Division
Post Office Box 52000
Oklahoma City, Oklahoma 73152-2000
Rule 165: 10-3-25

Form 1002A

API No.: 35081241160001

Completion Report

Spud Date: January 03, 2013

OTC Prod. Unit No.: 081-209846

Drilling Finished Date: February 03, 2013

1st Prod Date: February 20, 2013

Completion Date: February 19, 2013

Drill Type: HORIZONTAL HOLE

Min Gas Allowable: Yes

Well Name: PEGASUS 1-29H

Purchaser/Measurer: SCISSORTAIL

Location: LINCOLN 29 14N 5E
NW NW NW NW
2418 FSL 205 FWL of 1/4 SEC
Derrick Elevation: 0 Ground Elevation: 957

First Sales Date: 02/20/2013

Operator: EQUAL ENERGY US INC 22671

4801 GAILLARDIA PKWY STE 325
OKLAHOMA CITY, OK 73142-1920

Completion Type	
X	Single Zone
	Multiple Zone
	Commingled

Location Exception	
Order No	
	607582
	610220

Increased Density	
Order No	
There are no Increased Density records to display.	

Casing and Cement							
Type	Size	Weight	Grade	Feet	PSI	SAX	Top of CMT
SURFACE	9 5/8	36	J-55	632		250	SURFACE
PRODUCTION	7	26	J-55	5240		185	3785

Liner								
Type	Size	Weight	Grade	Length	PSI	SAX	Top Depth	Bottom Depth
There are no Liner records to display.								

Total Depth: 8226

Packer	
Depth	Brand & Type
There are no Packer records to display.	

Plug	
Depth	Plug Type
There are no Plug records to display.	

Initial Test Data										
Test Date	Formation	Oil BBL/Day	Oil-Gravity (API)	Gas MCF/Day	Gas-Oil Ratio Cu FT/BBL	Water BBL/Day	Pumpin or Flowing	Initial Shut-In Pressure	Choke Size	Flow Tubing Pressure
Feb 28, 2013	HUNTON			876		4370	PUMPING	763		

Completion and Test Data by Producing Formation			
Formation Name: HUNTON	Code: 269HNTN	Class: GAS	
Spacing Orders		Perforated Intervals	
Order No	Unit Size	From To	
605722	640	There are no Perf. Intervals records to display.	
Acid Volumes		Fracture Treatments	
There are no Acid Volume records to display.		There are no Fracture Treatments records to display.	

Formation	Top
CHECKERBOARD	2872
OSWEGO	3605
VERDIGRIS	3740
PINK LIME	3939
INOLA	4111
BROWN LIME	4251
MISSISSIPPI	4760
WOODFORD	4932
HUNTON	5024
SYLVAN	5191

Were open hole logs run? Yes

Date last log run: January 10, 2013

Were unusual drilling circumstances encountered? No

Explanation:

Other Remarks
OCC - THIS WELL IS AN OPEN HOLE COMPLETION FROM BOTTOM OF THE 7" CASING AT 5,240' TO TERMINUS AT 8,226' AND SECOND LATERAL 6,552'. IRREGULAR SECTION.

Lateral Holes

Sec: 29 TWP: 14N RGE: 5E County: LINCOLN

SW NE SE NW

844 FSL 2096 FWL of 1/4 SEC

Depth of Deviation: 5041 Radius of Turn: 811 Direction: 128 Total Length: 1511

Measured Total Depth: 6697 True Vertical Depth: 4719 End Pt. Location From Release, Unit or Property Line: 844

Sec: 29 TWP: 14N RGE: 5E County: LINCOLN

SW SW NE NE

1293 FNL 1289 FEL of 1/4 SEC

Depth of Deviation: 5293 Radius of Turn: 952 Direction: 95 Total Length: 2933

Measured Total Depth: 8303 True Vertical Depth: 4736 End Pt. Location From Release, Unit or Property Line: 1289

FOR COMMISSION USE ONLY

1118819

Status: Accepted

API NO. 081-24116
 OTC PROD. UNIT NO. 081-209846

PLEASE TYPE OR USE NO

Attach copy of c if recompleter



RECEIVED

Form 1002A Rev. 2009

APR 10 2013

OKLAHOMA CORPORATION COMMISSION

ORIGINAL
 AMENDED (Reason)

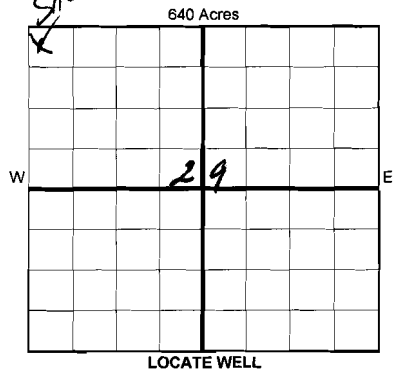
COMPLETION REPORT

TYPE OF DRILLING OPERATION

STRAIGHT HOLE DIRECTIONAL HOLE HORIZONTAL HOLE
 SERVICE WELL

If directional or horizontal, see reverse for bottom hole location.

COUNTY	LINCOLN	SEC	29	TWP	14N	RGE	05E	SPUD DATE	01/03/2013
LEASE NAME	PEGASUS			WELL NO.	1-29H		DRLG FINISHED DATE	02/03/2013	
NW 1/4	NW 1/4	NW 1/4	NW 1/4	FSL OF 1/4 SEC	2418	FWL OF 1/4 SEC	205	DATE OF WELL COMPLETION	02/19/2013
ELEVATIO N Derrick	Ground	957	Latitude (if known)			Longitude (if known)			
OPERATOR NAME	EQUAL ENERGY US, INC			OTC/OCC OPERATOR NO.	22671				
ADDRESS	4801 GAILLARDIA PARKWAY - SUITE 325								
CITY	OKLAHOMA CITY	STATE	OK	ZIP	73142				



COMPLETION TYPE

SINGLE ZONE
 MULTIPLE ZONE
 Application Date
 COMMINGLED
 Application Date
 LOCATION EXCEPTION ORDER INCREASED DENSITY ORDER NO. 607582 (Interim)

CASING & CEMENT (Form 1002C must be attached)

TYPE	SIZE	WEIGHT	GRADE	FEET	PSI	SAX	TOP OF CMT	
CONDUCTOR								
SURFACE	9 5/8	36#	J-55	632		250	SURFACE	
INTERMEDIATE	7	26#	J-55	5,240		185	3,785	
PRODUCTION								
LINER								
							TOTAL DEPTH	8,226

PACKER @ _____ BRAND & TYPE _____ PLUG @ _____ TYPE _____ PLUG @ _____ TYPE _____
 PACKER @ _____ BRAND & TYPE _____ PLUG @ _____ TYPE _____ PLUG @ _____ TYPE _____

COMPLETION & TEST DATA BY PRODUCING FORMATION

FORMATION	HUNTON						
SPACING & SPACING ORDER NUMBER	640 / 605722						
CLASS: Oil, Gas, Dry, Inj, Disp, Comm Disp, Svc	GAS						
PERFORATED INTERVALS	OH - 5041-6552 OH - 5293-8226						
ACID/VOLUME							
FRACTURE TREATMENT (Fluids/Prop Amounts)							

Min Gas Allowable (165:10-17-7) OR Oil Allowable (165:10-13-3) Gas Purchaser/Measurer SCISSORTAIL First Sales Date 2/20/2013

INITIAL TEST DATE	2/28/2013						
OIL-BBL/DAY	0						
OIL-GRAVITY (API)	N/A						
GAS-MCF/DAY	876						
GAS-OIL RATIO CU FT/BBL	N/A						
WATER-BBL/DAY	4370						
PUMPING OR FLOWING	PUMPING						
INITIAL SHUT-IN PRESSURE	763						
CHOKE SIZE							
FLOW TUBING PRESSURE							

A record of the formation is drilled through, and pertinent remarks are presented on the reverse. I declare that I have knowledge of the contents of this report and am authorized by my organization to make this report, which was prepared by me or under my supervision and direction, with the data and facts stated herein to be true, correct, and complete to the best of my knowledge and belief.

SIGNATURE: *[Signature]* NAME (PRINT OR TYPE): LORRI L. YOWELL DATE: 04/04/2013 PHONE NUMBER: 405-242-6086
 ADDRESS: P O BOX 420 CITY: CARNEY STATE: OK ZIP: 74832 EMAIL ADDRESS: lyowell@equalenergyus.ca

SCANNED

PLEASE TYPE OR USE BLACK INK ONLY
FORMATION RECORD

Give formation names and tops, if available, or descriptions and thickness of formations drilled through. Show intervals cored or drillstem tested.

LEASE NAME PEGASUS WELL NO. 1-29H

NAMES OF FORMATIONS	TOP
CHEKEBOARD	2,872
OSWEGO	3,605
VERDIGRIS	3740
PINK LIME	3,939
INOLA	4,111
BROWN LIME	4,251
MISSISSIPPI	4,760
WOODFORD	4,932
HUNTON	5,024
SYLVAN	5,191

FOR COMMISSION USE ONLY

ITD on file YES NO

APPROVED _____ DISAPPROVED _____

2) Reject Codes _____

Were open hole logs run? yes no

Date Last log was run 1/10/2013

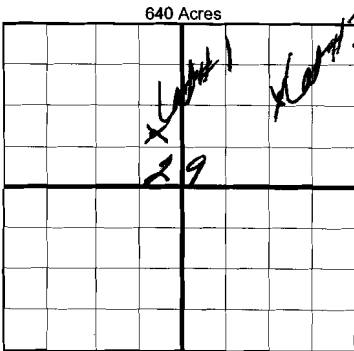
Was CO₂ encountered? yes no at what depths? _____

Was H₂S encountered? yes no at what depths? _____

Were unusual drilling circumstances encountered? yes no

If yes, briefly explain below _____

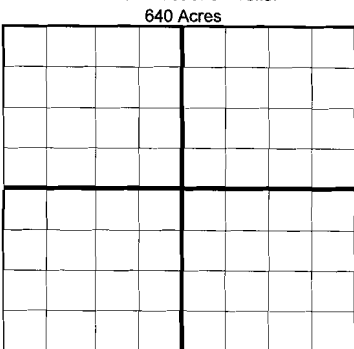
Other remarks: OCB - This well is an open hole completion from bottom of the 7" casing at 5240' to terminus at 8226 and 2nd lateral 6552'



If more than three drainholes are proposed, attach a separate sheet indicating the necessary information.

Direction must be stated in degrees azimuth. Please note, the horizontal drainhole and its end point must be located within the boundaries of the lease or spacing unit.

Directional surveys are required for all drainholes and directional wells.



BOTTOM HOLE LOCATION FOR DIRECTIONAL HOLE

SEC	TWP	RGE	COUNTY				
Spot Location	1/4	1/4	1/4	1/4	Feet From 1/4 Sec Lines	FSL	FWL
Measured Total Depth	True Vertical Depth		BHL From Lease, Unit, or Property Line:				

BOTTOM HOLE LOCATION FOR HORIZONTAL HOLE: (LATERALS)

LATERAL #1

SEC	TWP	RGE	COUNTY				
SEC 29	TWP 14N	RGE 05E	COUNTY LINCOLN				
Spot Location	SW 1/4	NE 1/4	SE 1/4	NW 1/4	Feet From 1/4 Sec Lines	FSL 844	FWL 2096
Depth of Deviation	5,041		Radius of Turn	811.3	Direction	128.7	Total Length 1,511
Measured Total Depth	6,552		True Vertical Depth	4,718			
BHL From Lease, Unit, or Property Line:							

LATERAL #2

SEC	TWP	RGE	COUNTY				
SEC 29	TWP 14N	RGE 05E	COUNTY LINCOLN				
Spot Location	SW 1/4	SW 1/4	NE 1/4	NE 1/4	Feet From 1/4 Sec Lines	FSL 1347	FWL 1351
Depth of Deviation	5293		Radius of Turn	952.5	Direction	95	Total Length 2933
Measured Total Depth	8226		True Vertical Depth	4734.5			
BHL From Lease, Unit, or Property Line:							

LATERAL #3

SEC	TWP	RGE	COUNTY				
Spot Location	1/4	1/4	1/4	1/4	Feet From 1/4 Sec Lines	FSL	FWL
Depth of Deviation	Radius of Turn		Direction		Total Length		
Measured Total Depth	True Vertical Depth		BHL From Lease, Unit, or Property Line:				

57113

01

API NO. 081-24116
OTC PROD. UNIT NO. 081-209846

PLEASE TYPE OR USE NO

Attach copy of c if recompletor

AS SUBMITTED

MISSION on 2000

RECEIVED

Form 1002A Rev. 2009

APR 10 2013

1016EZ

OKLAHOMA CORPORATION COMMISSION

ORIGINAL
 AMENDED (Reason)

COMPLETION REPORT

TYPE OF DRILLING OPERATION
 STRAIGHT HOLE DIRECTIONAL HOLE HORIZONTAL HOLE

SPUD DATE 01/03/2013

DRLG FINISHED DATE 02/03/2013

COUNTY LINCOLN SEC 29 TWP 14N RGE 05E

DATE OF WELL COMPLETION 02/19/2013

LEASE NAME PEGASUS WELL NO. 1-29H

1st PROD DATE 02/20/2013

NW 1/4 NW 1/4 NW 1/4 NW 1/4 FSL OF 1/4 SEC 2418 FWL OF 1/4 SEC 205

RECOMP DATE

ELEVATION N Derrick Ground 957

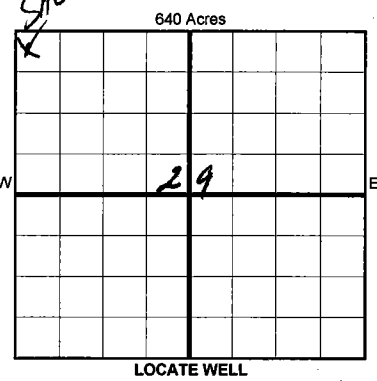
Longitude (if known)

OPERATOR NAME EQUAL ENERGY US, INC

OTC/OCC OPERATOR NO. 22671

ADDRESS 4801 GAILLARDIA PARKWAY - SUITE 325

CITY OKLAHOMA CITY STATE OK ZIP 73142



COMPLETION TYPE
 SINGLE ZONE
 MULTIPLE ZONE
Application Date
 COMMINGLED
Application Date
LOCATION 607582 (Interim)
EXCEPTION ORDER
INCREASED DENSITY
ORDER NO.

CASING & CEMENT (Form 1002C must be attached)

TYPE	SIZE	WEIGHT	GRADE	FEET	PSI	SAX	TOP OF CMT
CONDUCTOR							
SURFACE	9 5/8	36#	J-55	632		250	SURFACE
INTERMEDIATE	7	26#	J-55	5,240		185	3,785
PRODUCTION							
LINER							
TOTAL DEPTH							8,226

PACKER @ _____ BRAND & TYPE _____ PLUG @ _____ TYPE _____ PLUG @ _____ TYPE _____
PACKER @ _____ BRAND & TYPE _____ PLUG @ _____ TYPE _____ PLUG @ _____ TYPE _____

COMPLETION & TEST DATA BY PRODUCING FORMATION 219 HNTN

FORMATION	HUNTON				
SPACING & SPACING ORDER NUMBER	640 / 605722				
CLASS: Oil, Gas, Dry, Inj, Disp, Comm Disp, Svc	GAS				
PERFORATED INTERVALS	OH - 5041-6552 OH - 5293-8226				
ACID/VOLUME					
FRACTURE TREATMENT (Fluids/Prop Amounts)					

Min Gas Allowable (165:10-17-7)

Gas Purchaser/Measurer

SCISSORTAIL

OR

First Sales Date

2/20/2013

INITIAL TEST DATA

Oil Allowable (165:10-13-3)

INITIAL TEST DATE	2/28/2013			
OIL-BBL/DAY	0			
OIL-GRAVITY (API)	N/A			
GAS-MCF/DAY	876			
GAS-OIL RATIO CU FT/BBL	N/A			
WATER-BBL/DAY	4370			
PUMPING OR FLOWING	PUMPING			
INITIAL SHUT-IN PRESSURE	763			
CHOKE SIZE				
FLOW TUBING PRESSURE				

SCANNED

A record of the formations drilled through, and pertinent remarks are presented on the reverse. I declare that I have knowledge of the contents of this report and am authorized by my organization to make this report, which was prepared by me or under my supervision and direction, with the data and facts stated herein to be true, correct, and complete to the best of my knowledge and belief.

SIGNATURE
P O BOX 420
ADDRESS

LORRI L. YOWELL
NAME (PRINT OR TYPE)
CARNEY OK 74832
CITY STATE ZIP

4/10/2013 405-242-6086
DATE PHONE NUMBER
lyowell@equalenergyus.ca
EMAIL ADDRESS

Handwritten initials

Handwritten initials