

Oklahoma Corporation Commission
Oil & Gas Conservation Division
Post Office Box 52000
Oklahoma City, Oklahoma 73152-2000
Rule 165: 10-3-25

Form 1002A

API No.: 35003223290001

Completion Report

Spud Date: June 22, 2012

OTC Prod. Unit No.: 003-208619

Drilling Finished Date: July 21, 2012

1st Prod Date: August 27, 2012

Completion Date: August 07, 2012

Drill Type: HORIZONTAL HOLE

Min Gas Allowable: Yes

Well Name: LWH TRUST 18-27-10 1H

Purchaser/Measurer: CHESAPEAKE OPERATING INC

Location: ALFALFA 18 27N 10W
S2 S2 SE SE
200 FSL 660 FEL of 1/4 SEC
Derrick Elevation: 1177 Ground Elevation: 1159

First Sales Date: 08/27/2012

Operator: CHESAPEAKE OPERATING INC 17441
PO BOX 18496
6100 N WESTERN AVE
OKLAHOMA CITY, OK 73154-0496

Completion Type		Location Exception		Increased Density	
X	Single Zone	Order No		Order No	
	Multiple Zone	599403		There are no Increased Density records to display.	
	Commingled	605186			

Casing and Cement								
Type		Size	Weight	Grade	Feet	PSI	SAX	Top of CMT
SURFACE		9 5/8	36	J-55	1226		470	SURFACE
INTERMEDIATE		7	26	P-110	5510		175	3718

Liner								
Type	Size	Weight	Grade	Length	PSI	SAX	Top Depth	Bottom Depth
LINER	4 1/2	13.5	P-110	5272	0	550	4810	

Total Depth: 10084

Packer		Plug	
Depth	Brand & Type	Depth	Plug Type
4777	A-3	There are no Plug records to display.	

Initial Test Data										
Test Date	Formation	Oil BBL/Day	Oil-Gravity (API)	Gas MCF/Day	Gas-Oil Ratio Cu FT/BBL	Water BBL/Day	Pumpin or Flowing	Initial Shut-In Pressure	Choke Size	Flow Tubing Pressure
Sep 04, 2012	MISSISSIPPIAN	581	36.55	1531	2635	4351	ARTIFICIA			278

Completion and Test Data by Producing Formation														
Formation Name: MISSISSIPPIAN		Code: 359MSSP												
		Class: OIL												
<table border="1" style="width: 100%;"> <tr> <th colspan="2">Spacing Orders</th> </tr> <tr> <th>Order No</th> <th>Unit Size</th> </tr> <tr> <td>599085</td> <td>640</td> </tr> </table>		Spacing Orders		Order No	Unit Size	599085	640	<table border="1" style="width: 100%;"> <tr> <th colspan="2">Perforated Intervals</th> </tr> <tr> <th>From</th> <th>To</th> </tr> <tr> <td>5272</td> <td>9981</td> </tr> </table>	Perforated Intervals		From	To	5272	9981
Spacing Orders														
Order No	Unit Size													
599085	640													
Perforated Intervals														
From	To													
5272	9981													
<table border="1" style="width: 100%;"> <tr> <th>Acid Volumes</th> </tr> <tr> <td>25,000 GALLONS 15% HCL ACID</td> </tr> </table>		Acid Volumes	25,000 GALLONS 15% HCL ACID	<table border="1" style="width: 100%;"> <tr> <th>Fracture Treatments</th> </tr> <tr> <td>50,758 BARRELS FRAC FLUID, 999,380 POUNDS PROPPANT</td> </tr> </table>	Fracture Treatments	50,758 BARRELS FRAC FLUID, 999,380 POUNDS PROPPANT								
Acid Volumes														
25,000 GALLONS 15% HCL ACID														
Fracture Treatments														
50,758 BARRELS FRAC FLUID, 999,380 POUNDS PROPPANT														

Formation	Top
MISSISSIPPIAN	5271

Were open hole logs run? No

Date last log run:

Were unusual drilling circumstances encountered? No

Explanation:

Other Remarks
There are no Other Remarks.

Lateral Holes
Sec: 18 TWP: 27N RGE: 10W County: ALFALFA NE NW NE NE 67 FNL 712 FEL of 1/4 SEC Depth of Deviation: 4934 Radius of Turn: 325 Direction: 359 Total Length: 4813 Measured Total Depth: 10084 True Vertical Depth: 5259 End Pt. Location From Release, Unit or Property Line: 67

FOR COMMISSION USE ONLY	
Status: Accepted	1116255

API NO. 35-003-22329
OTC PROD.
UNIT NO. 003-208619

PLEASE TYPE OR USE BLACK INK ONLY
NOTE:
Attach copy of original 1002A if recompletion



Form 1002
Rev. 2009

642404
RECEIVED

SEP 14 2012

☒ ORIGINAL
☐ AMENDED
Reason Amended

TYPE OF DRILLING OPERATION

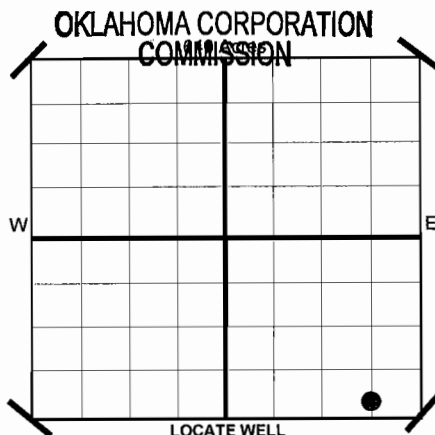
☐ STRAIGHT HOLE ☐ DIRECTIONAL HOLE ☒ HORIZONTAL HOLE

If directional or horizontal, see reverse for bottom hole location.

COUNTY	ALFALFA	SEC	18	TWP	27N	RGE	10W
LEASE NAME	LWH TRUST 18-27-10			WELL NO	1H		
SHL	S2 1/4	S2 1/4	SE 1/4	SE 1/4	200	1/4 SEC	660
ELEVATION	Derrick Fl 1,177			Ground	1,159		
Latitude (if Known)				Longitude (if Known)			
OPERATOR NAME	CHESAPEAKE OPERATING, INC.			OTC/OCC OPERATOR NO.	17441		
ADDRESS	P.O. BOX 18496						
CITY	OKLAHOMA CITY			STATE	OK	ZIP	73154

COMPLETION REPORT

SPUD DATE	6/22/2012
DRLG FINISHED DATE	7/21/2012
DATE OF WELL COMPLETION	8/7/2012
1ST PROD DATE	8/27/2012
RECOMP DATE	



COMPLETION TYPE

<input checked="" type="checkbox"/> SINGLE ZONE	
<input type="checkbox"/> MULTIPLE ZONE	
Application Date	
COMINGLED	
Application Date	
LOCATION EXCEPTION ORDER NO.	599403 (Interim)
INCREASED DENSITY ORDER NO.	N/A

CASING & CEMENT (Form 1002C must be attached)

TYPE	SIZE	WEIGHT	GRADE	FEET	PSI	SAX	TOP
CONDUCTOR							
SURFACE	9 5/8"	36#	J-55	1,226		470	Surface
INTERMEDIATE	7"	26#	P-110	5,510		175	3,718
INTERMEDIATE							
LINER	4 1/2"	13.5#	P-110	4,810-10,082		550	4,824
							10,084

PACKER @ 4.777 BRAND & TYPE A-3
PACKER @ BRAND & TYPE

PLUG @ TYPE PLUG @ TYPE
PLUG @ TYPE PLUG @ TYPE

TOTAL DEPTH

COMPLETION & TEST DATA BY PRODUCING FORMATION

FORMATION	MISSISSIPPIAN				
SPACING & SPACING ORDER NUMBER	640 599085				
CLASS: Oil, Gas, Dry, Inj. Disp, Comm Disp, Svc	Oil				
PERFORATED INTERVALS	5,272-9,981				
ACID/VOLUME	15% HCL Acid 25,000 gal Frac Fluid				
FRACTURE TREATMENT (Fluids/Prop Amounts)	50,758 bbls Proppant 999,380 lbs				

Minimum Gas Allowable (165:10-17-7) Gas Purchaser/Measurer Chesapeake Operating, Inc.
☒ OR 1st Sales Date 8/27/2012
Oil Allowable (165:10-13-3)

INITIAL TEST DATA

INITIAL TEST DATE	9/4/2012				
OIL-BBL/DAY	581				
OIL-GRAVITY (API)	36.55				
GAS-MCF/DAY	1,531				
GAS-OIL RATIO CU FT/BBL	2,635				
WATER-BBL/DAY	4,351				
PUMPING OR FLOWING	Artificial Lift				
INITIAL SHUT-IN PRESSURE					
CHOKE SIZE					
FLOW TUBING PRESSURE	278				

A record of the formations drilled through, and pertinent remarks are presented on the reverse. I declare that I have knowledge of the contents of this report and am authorized by my organization to make this report, which was prepared by me or under my supervision and direction, with the data and facts stated herein to be true, correct, and complete to the best of my knowledge and belief.

David Craycraft - DISTRICT MANAGER 9/12/2012 405-848-8000
SIGNATURE NAME (PRINT OR TYPE) DATE PHONE NUMBER
P.O. BOX 18496 OKLAHOMA CITY OK 73154 dawn.richardson@chk.com
ADDRESS CITY STATE ZIP EMAIL ADDRESS

Give formation names and tops, if available, or descriptions and thickness of formations drilled through. Show intervals cored or drillstem tested.

WELL NO. 1H

NAMES OF FORMATIONS	TOP
MISSISSIPPIAN	5,271

FOR COMMISSION USE ONLY	
ITD on file	<input type="checkbox"/> YES <input type="checkbox"/> NO
APPROVED	DISAPPROVED
2) Reject Codes	

Were open hole logs run?	yes	<u>X</u>	no
Date Last log was run	N/A		
Was CO ₂ encountered?	yes	<u>X</u>	no at what depths?
Was H ₂ S encountered?	yes	<u>X</u>	no at what depths?
Were unusual drilling circumstances encountered?		yes	<u>X</u> no
If yes, briefly explain.			

Other remarks:

640 Acres

If more than three drainholes are proposed, attach a separate sheet indicating the necessary information.

Direction must be stated in degrees azimuth.
Please note, the horizontal drainhole and its end
point must be located within the boundaries of the
lease or spacing unit.

Directional surveys are required for all drainholes and directional wells.

SEC	TWP	RGE	COUNTY
Spot Location	1/4	1/4	1/4
Measured Total Depth	True Vertical Depth	Feet From 1/4 Sec Lines	FSL
		FWL	
BHL From Lease, Unit, or Property Line:			

BOTTOM HOLE LOCATION FOR HORIZONTAL WELL: (LATERALS)											
LATERAL #1											
SEC	18	TWP	27	RGE	10	COUNTY					
						ALFALFA					
Spot Location						Feet From 1/4 Sec Lines		FNL	67	FEL	712
NE 1/4		NW 1/4		NE 1/4		NE 1/4					
Depth of Deviation				Radius of Turn		Direction		Total Length			
4,934				325		359		4,813			
Measured Total Depth				True Vertical Depth		BHL From Lease, Unit, or Property Line:					
10,084				5,259		67					

SEC	TWP	RGE	COUNTY				
Spot Location					Feet From 1/4 Sec Lines	FSL	FWL
1/4	1/4	1/4	1/4				
Depth of Deviation		Radius of Turn		Direction		Total Length	
Measured Total Depth		True Vertical Depth		BHL From Lease, Unit, or Property Line:			

EXTERNAL #3							
SEC	TWP	RGE	COUNTY				
Spot Location							
1/4	1/4	1/4	1/4	Feet From 1/4 Sec Lines	FSL	FWL	
Depth of Deviation		Radius of Turn		Direction		Total Length	
Measured Total Depth		True Vertical Depth		BHL From Lease, Unit, or Property Line:			

Image @ 1002A

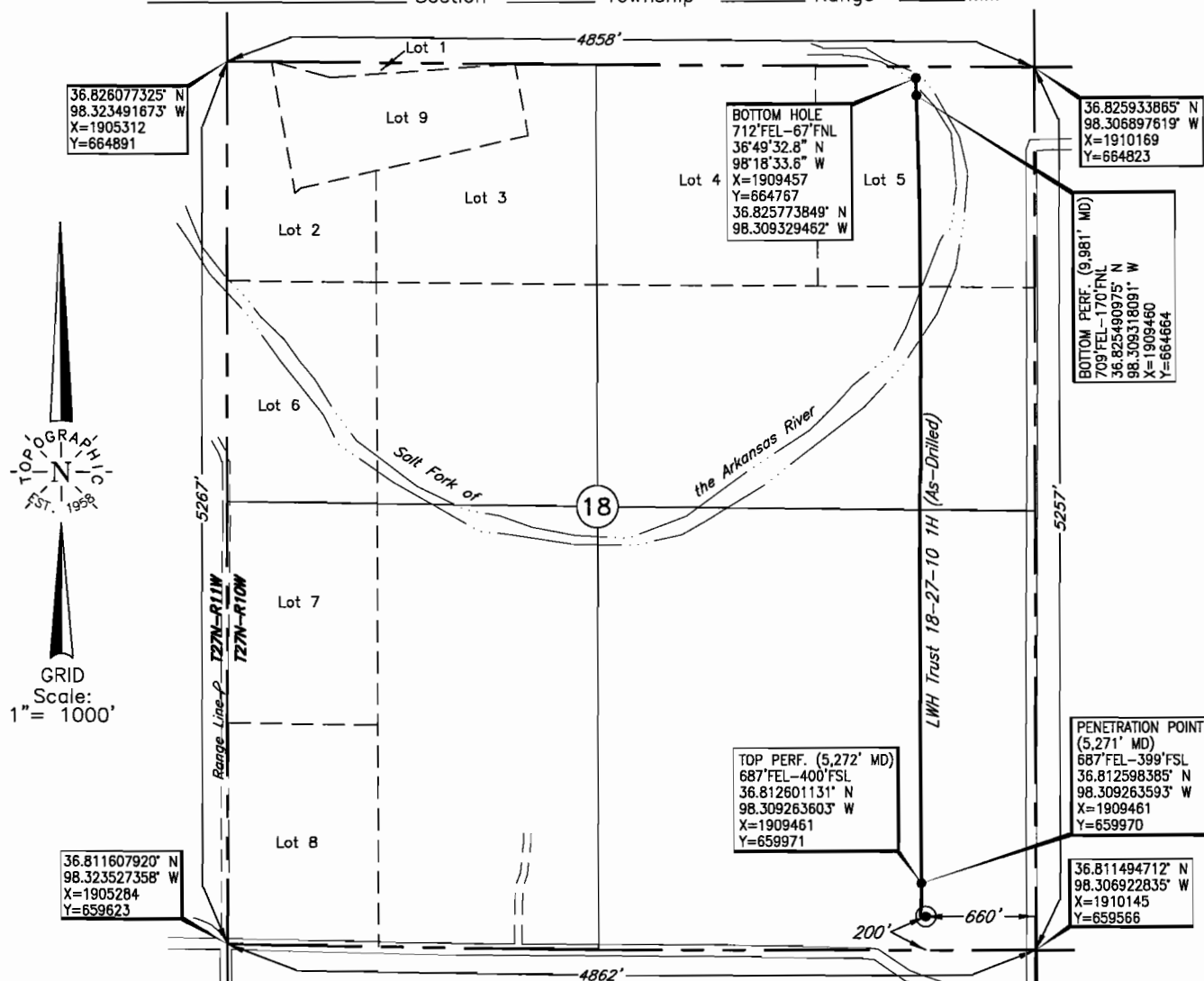
TOPOGRAPHIC LAND SURVEYORS OF OKLAHOMA

6709 NORTH CLASSEN BLVD., OKLA. CITY, OKLA. 73116 * LOCAL (405) 843-4847 * OUT OF STATE (800) 654-3219
Certificate of Authorization No. 1293.

ALFALFA

County, Oklahoma

200'FSL - 660'FEL Section 18 Township 27N Range 10W I.M.



Distances shown in (parenthesis) are calculated based upon the Quarter Section being 2640 feet, those shown in [brackets] are based on GLO (General Land Office) distances and have NOT been measured on the ground.

Operator: CHESAPEAKE OPERATING, INC.

Lease Name: LWH TRUST 18-27-10

Well No.: 1H

ELEVATION:

1162' Gr. at Stake

Topography & Vegetation Loc. fell in rolling pasture

Good Drill Site? Yes Reference Stakes or Alternate Location Stakes Set None

Best Accessibility to Location From South off County Road

Distance & Direction

from Hwy Jct or Town From Cherokee, Ok., go 3 miles East on St. Hwy. 11, then 1 mile

North to the SE Cor. of Sec. 18-T27N-R10W

This information was gathered with a GPS receiver with Sub-Meter accuracy.

DATUM: NAD-27
LAT: 36°48'43.4"N
LONG: 98°18'33.0"W
LAT: 36.812048150
LONG: 98.309176801

STATE PLANE
COORDINATES: (US Feet)
ZONE: OK NORTH
X: 1909486
Y: 659770

188602 Date of Drawing: Aug. 14, 2012
Invoice # 182012 Date Staked: Apr. 12, 2012 JP

FINAL AS-DRILLED PLAT

AS-DRILLED INFORMATION
FURNISHED BY CHESAPEAKE OPERATING