

Oklahoma Corporation Commission
Oil & Gas Conservation Division
Post Office Box 52000
Oklahoma City, Oklahoma 73152-2000
Rule 165: 10-3-25

Form 1002A

API No.: 35003222930000

Completion Report

Spud Date: May 18, 2012

OTC Prod. Unit No.: 003-208736

Drilling Finished Date: June 16, 2012

1st Prod Date: September 06, 2012

Completion Date: July 12, 2012

Drill Type: HORIZONTAL HOLE

Min Gas Allowable: Yes

Well Name: LOVINA 7-26-12 1H

Purchaser/Measurer: CHESAPEAKE OPERATING INC

Location: ALFALFA 7 26N 12W
SW SE SW SE
260 FSL 1850 FEL of 1/4 SEC
Derrick Elevation: 1501 Ground Elevation: 1483

First Sales Date: 09/12/2012

Operator: CHESAPEAKE OPERATING INC 17441
PO BOX 18496
6100 N WESTERN AVE
OKLAHOMA CITY, OK 73154-0496

| Completion Type | |
|-----------------|---------------|
| X | Single Zone |
| | Multiple Zone |
| | Commingled |

| Location Exception | |
|--------------------|--------|
| Order No | |
| | 597000 |
| | 605393 |

| Increased Density | |
|--|--|
| Order No | |
| There are no Increased Density records to display. | |

| Casing and Cement | | | | | | | |
|-------------------|--------|--------|-------|------|-----|-----|------------|
| Type | Size | Weight | Grade | Feet | PSI | SAX | Top of CMT |
| SURFACE | 13 3/8 | 48 | H-40 | 460 | | 440 | SURFACE |
| INTERMEDIATE | 9 5/8 | 36 | J-55 | 1500 | | 681 | SURFACE |
| INTERMEDIATE | 7 | 26 | P-110 | 5997 | | 246 | 4201 |

| Liner | | | | | | | | |
|-------|-------|--------|-------|--------|-----|-----|-----------|--------------|
| Type | Size | Weight | Grade | Length | PSI | SAX | Top Depth | Bottom Depth |
| LINER | 4 1/2 | 13.5 | P-110 | 5234 | 0 | 550 | 5378 | |

Total Depth: 10612

| Packer | |
|--------|--------------|
| Depth | Brand & Type |
| 5324 | AS-3 |

| Plug | |
|-------|-----------|
| Depth | Plug Type |
| 10490 | PBTD |

| Initial Test Data | | | | | | | | | | |
|-------------------|---------------|-------------|-------------------|-------------|-------------------------|---------------|-------------------|--------------------------|------------|----------------------|
| Test Date | Formation | Oil BBL/Day | Oil-Gravity (API) | Gas MCF/Day | Gas-Oil Ratio Cu FT/BBL | Water BBL/Day | Pumpin or Flowing | Initial Shut-In Pressure | Choke Size | Flow Tubing Pressure |
| Sep 17, 2012 | MISSISSIPPIAN | 255 | | 1061 | 4161 | 4333 | ARTIFICIA | | | 194 |

| Completion and Test Data by Producing Formation | | | | | | | | | | |
|---|------------------|--|---------------|--|--|------------|-----------|--|--|--|
| Formation Name: MISSISSIPPIAN | | | Code: 359MSSP | | | Class: OIL | | | | |
| Spacing Orders | | | | Perforated Intervals | | | | | | |
| Order No | Unit Size | | | From | | | To | | | |
| 595283 | 640 | | | 5900 | | | 10461 | | | |
| Acid Volumes | | | | Fracture Treatments | | | | | | |
| 20,000 GALLONS 15% HCL ACID | | | | 46,133 BARRELS FRAC FLUID, 1,006,342 POUNDS PROPPANT | | | | | | |

| Formation | Top |
|---------------|------|
| MISSISSIPPIAN | 5872 |

Were open hole logs run? No

Date last log run:

Were unusual drilling circumstances encountered? No

Explanation:

| Other Remarks |
|-----------------------------|
| There are no Other Remarks. |

| Lateral Holes |
|--|
| Sec: 7 TWP: 26N RGE: 12W County: ALFALFA |
| NW NE NW NE |
| 49 FNL 1833 FEL of 1/4 SEC |
| Depth of Deviation: 5499 Radius of Turn: 343 Direction: 4 Total Length: 4740 |
| Measured Total Depth: 10612 True Vertical Depth: 5842 End Pt. Location From Release, Unit or Property Line: 49 |

| FOR COMMISSION USE ONLY |
|-------------------------|
| Status: Accepted |
| 1116376 |

API NO. 35-003-22293
 OTC PROD.
 UNIT NO. 003-208736

PLEASE TYPE OR USE BLACK INK ONLY
 NOTE:
 Attach copy of original 1002A if recompletion or



RECEIVED Form 1002A
 612436 Rev. 2009

SEP 26 2012

OKLAHOMA CORPORATION
 COMMISSION

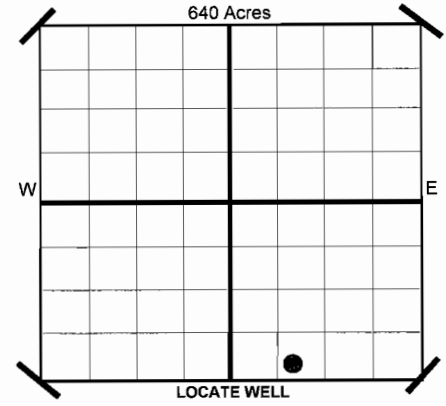
ORIGINAL
 AMENDED
 Reason Amended

COMPLETION REPORT

TYPE OF DRILLING OPERATION
 STRAIGHT HOLE DIRECTIONAL HOLE HORIZONTAL HOLE
 SERVICE WELL

If directional or horizontal, see reverse for bottom hole location.

| | | | | | | | | | |
|---------------|-------------------------------|----------------------|-------|----------------------|-----------|-------------------------|-------------|---------------|-----------|
| COUNTY | ALFALFA | SEC | 7 | TWP | 26N | RGE | 12W | SPUD DATE | 5/18/2012 |
| LEASE NAME | LOVINA 7-26-12 | WELL NO | 1H | DRLG FINISHED DATE | 6/16/2012 | DATE OF WELL COMPLETION | 7/12/2012 | 1ST PROD DATE | 9/6/2012 |
| SHL | SW 1/4 SE 1/4 SW 1/4 SE 1/4 | FSL | 260 | FEL OF | 1/4 SEC | 1,850 | RECOMP DATE | | |
| ELEVATION | Derrick Fl 1,501 Ground 1,483 | Latitude (if Known) | | Longitude (if Known) | | | | | |
| OPERATOR NAME | CHESAPEAKE OPERATING, INC. | OTC/OCC OPERATOR NO. | 17441 | | | | | | |
| ADDRESS | P.O. BOX 18496 | | | | | | | | |
| CITY | OKLAHOMA CITY | STATE | OK | ZIP | 73154 | | | | |



COMPLETION TYPE

| | |
|-------------------------------------|-----------------------------------|
| <input checked="" type="checkbox"/> | SINGLE ZONE |
| <input type="checkbox"/> | MULTIPLE ZONE Application Date |
| <input type="checkbox"/> | COMMINGLED Application Date |
| LOCATION EXCEPTION ORDER NO. | 59700 (Interim) |
| INCREASED DENSITY ORDER NO. | N/A |

CASING & CEMENT (Form 1002C must be attached)

| TYPE | SIZE | WEIGHT | GRADE | FEET | PSI | SAX | TOP | |
|--------------|---------|--------|-------|--------------|-----|-----|-------------|--------|
| CONDUCTOR | | | | | | | | |
| SURFACE | 13 3/8" | 48# | H-40 | 460 | | 440 | Surface | |
| INTERMEDIATE | 9 5/8" | 36# | J-55 | 1,500 | | 681 | Surface | |
| INTERMEDIATE | 7" | 26# | P-110 | 5,997 | | 246 | 4,201 | |
| LINER | 4 1/2" | 13.5# | P-110 | 5,378-10,612 | | 550 | 5,378 | |
| | | | | | | | TOTAL DEPTH | 10,612 |

PACKER @ 5.324 BRAND & TYPE AS-3 PLUG @ 10.490 TYPE PBTD PLUG @ _____ TYPE _____
 PACKER @ _____ BRAND & TYPE _____ PLUG @ _____ TYPE _____ PLUG @ _____ TYPE _____

COMPLETION & TEST DATA BY PRODUCING FORMATION

| | | | | | | | |
|---|--|--|--|--|--|--|--|
| FORMATION | MISSISSIPPIAN | | | | | | |
| SPACING & SPACING ORDER NUMBER | 640 595283 | | | | | | |
| CLASS: Oil, Gas, Dry, Inj, Disp, Comm Disp, Svc | Oil | | | | | | |
| PERFORATED INTERVALS | 5,900-10,461 | | | | | | |
| ACID/VOLUME | 15% HCL Acid 20,000 gal | | | | | | |
| FRACTURE TREATMENT (Fluids/Prop Amounts) | Frac Fluid 46,133 bbls Proppant 1,006,342 lbs | | | | | | |

Minimum Gas Allowable (165:10-17-7) Gas Purchaser/Measurer Chesapeake Operating, Inc.
 OR
 Oil Allowable (165:10-13-3) 1st Sales Date 9/12/2012

INITIAL TEST DATA

| | | | | |
|--------------------------|-----------------|--|--|--|
| INITIAL TEST DATE | 9/17/2012 | | | |
| OIL-BBL/DAY | 255 | | | |
| OIL-GRAVITY (API) | | | | |
| GAS-MCF/DAY | 1,061 | | | |
| GAS-OIL RATIO CU FT/BBL | 4,162 | | | |
| WATER-BBL/DAY | 4,333 | | | |
| PUMPING OR FLOWING | Artificial Lift | | | |
| INITIAL SHUT-IN PRESSURE | | | | |
| CHOKE SIZE | | | | |
| FLOW TUBING PRESSURE | 194 | | | |

A record of the formations drilled through, and pertinent remarks are presented on the reverse. I declare that I have knowledge of the contents of this report and am authorized by my organization to make this report, which was prepared by me or under my supervision and direction, with the data and facts stated herein to be true, correct, and complete to the best of my knowledge and belief.

Signature: *David Craycraft* David Craycraft - DISTRICT MANAGER 9/24/2012 405-848-8000
 P.O. BOX 18496 OKLAHOMA CITY OK 73154 dawn.richardson@chk.com
 ADDRESS CITY STATE ZIP EMAIL ADDRESS

PLEASE TYPE OR USE BLACK INK ONLY
FORMATION RECORD

Give formation names and tops, if available, or descriptions and thickness of formations drilled through. Show intervals cored or drillstem tested.

LEASE NAME LOVINA 7-26-12

WELL NO. 1H

| NAMES OF FORMATIONS | TOP |
|---------------------|-------|
| MISSISSIPPIAN | 5,872 |

FOR COMMISSION USE ONLY

ITD on file YES NO

APPROVED _____ DISAPPROVED _____

2) Reject Codes

Were open hole logs run? yes no

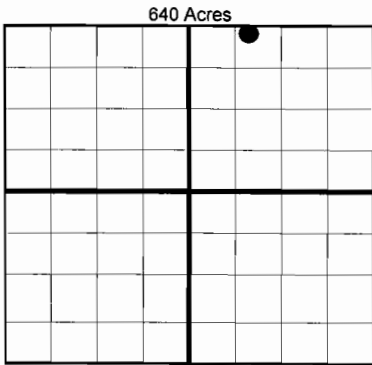
Date Last log was run N/A

Was CO₂ encountered? yes no at what depths?

Was H₂S encountered? yes no at what depths?

Were unusual drilling circumstances encountered? yes no
If yes, briefly explain.

Other remarks:



BOTTOM HOLE LOCATION FOR DIRECTIONAL HOLE

| SEC | TWP | RGE | COUNTY | | | | |
|----------------------|---------------------|-----|---|-----|-------------------------|-----|-----|
| Spot Location | 1/4 | 1/4 | 1/4 | 1/4 | Feet From 1/4 Sec Lines | FSL | FWL |
| Measured Total Depth | True Vertical Depth | | BHL From Lease, Unit, or Property Line: | | | | |

BOTTOM HOLE LOCATION FOR HORIZONTAL HOLE: (LATERALS)

LATERAL #1

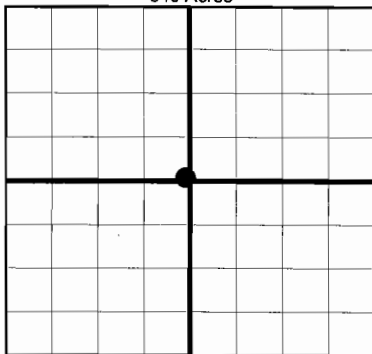
| SEC | TWP | RGE | COUNTY | | | | | |
|----------------------|--------|---------------------|---------|---|-------------------------|--------------|-------|-------|
| 7 | 26N | 12W | ALFALFA | | | | | |
| Spot Location | NW 1/4 | NE 1/4 | NW 1/4 | NE 1/4 | Feet From 1/4 Sec Lines | FNL | FEL | 1,833 |
| Depth of Deviation | 5,499 | Radius of Turn | 343 | Direction | 4 | Total Length | 4,740 | |
| Measured Total Depth | 10,612 | True Vertical Depth | 5,842 | BHL From Lease, Unit, or Property Line: | | | | 49 |

If more than three drainholes are proposed, attach a separate sheet indicating the necessary information.

Direction must be stated in degrees azimuth. Please note, the horizontal drainhole and its end point must be located within the boundaries of the lease or spacing unit.

Directional surveys are required for all drainholes and directional wells.

640 Acres



LATERAL #2

| SEC | TWP | RGE | COUNTY | | | | |
|----------------------|---------------------|-----|---|--------------|-------------------------|-----|-----|
| Spot Location | 1/4 | 1/4 | 1/4 | 1/4 | Feet From 1/4 Sec Lines | FSL | FWL |
| Depth of Deviation | Radius of Turn | | Direction | Total Length | | | |
| Measured Total Depth | True Vertical Depth | | BHL From Lease, Unit, or Property Line: | | | | |

LATERAL #3

| SEC | TWP | RGE | COUNTY | | | | |
|----------------------|---------------------|-----|---|--------------|-------------------------|-----|-----|
| Spot Location | 1/4 | 1/4 | 1/4 | 1/4 | Feet From 1/4 Sec Lines | FSL | FWL |
| Depth of Deviation | Radius of Turn | | Direction | Total Length | | | |
| Measured Total Depth | True Vertical Depth | | BHL From Lease, Unit, or Property Line: | | | | |

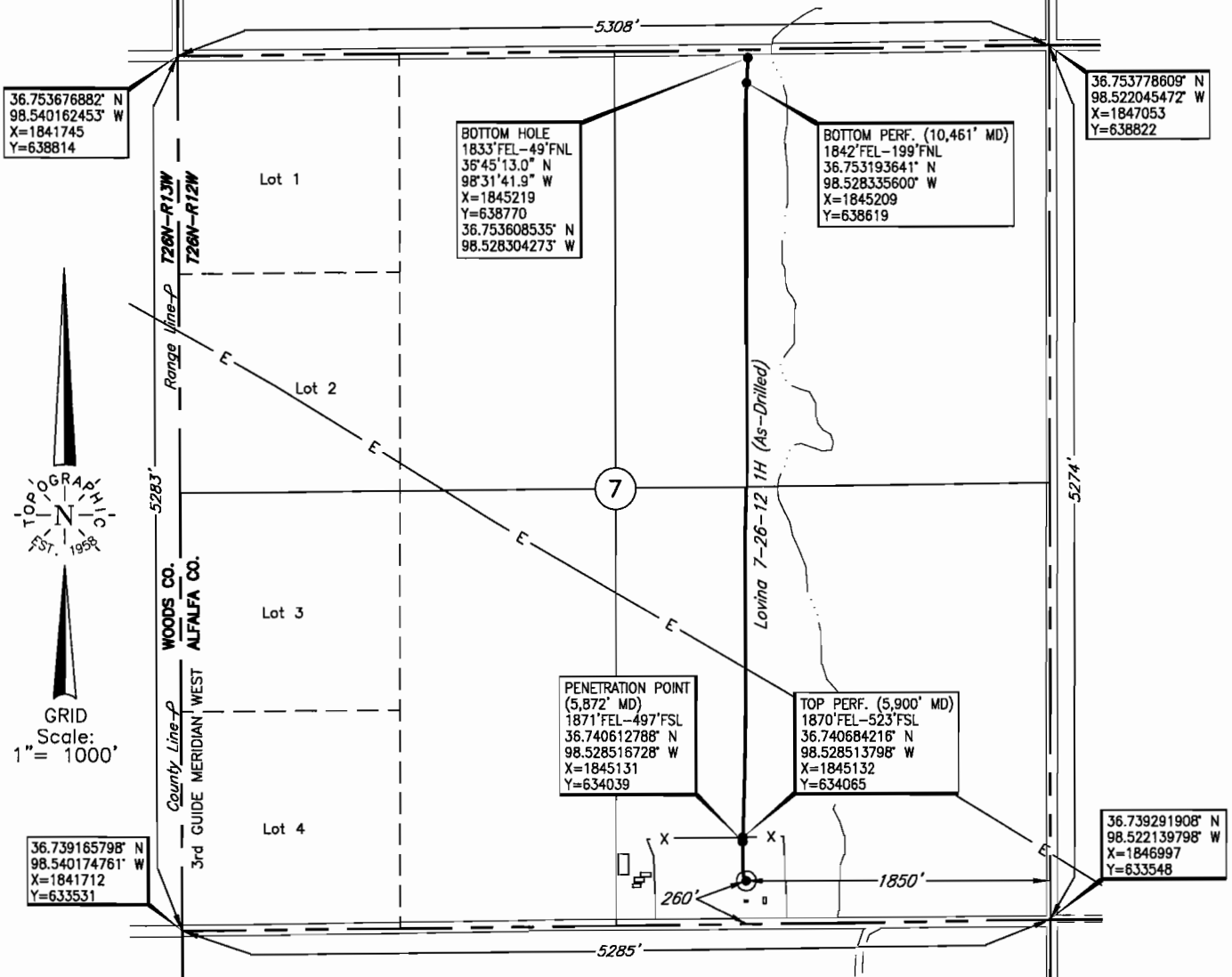
Image @ 1002A

TOPOGRAPHIC LAND SURVEYORS OF OKLAHOMA

6709 NORTH CLASSEN BLVD., OKLA. CITY, OKLA. 73116 * LOCAL (405) 843-4847 * OUT OF STATE (800) 654-3219
 Certificate of Authorization No. 1293.

ALFALFA County, Oklahoma

260'FSL - 1850'FEL Section 7 Township 26N Range 12W I.M.



Distances shown in (parenthesis) are calculated based upon the Quarter Section being 2640 feet, those shown in [brackets] are based on GLO (General Land Office) distances and have NOT been measured on the ground.

Operator: CHESAPEAKE OPERATING, INC.

Lease Name: LOVINA 7-26-12

Well No.: 1H

ELEVATION:
1483' Gr. at Stake

Topography & Vegetation Loc. fell in rolling pasture

Good Drill Site? Yes Reference Stakes or Alternate Location Stakes Set None

Best Accessibility to Location From South off county road

Distance & Direction from Hwy Jct or Town From Cherokee, OK, go 9.0 mi. West on paved road, then 1.0 mi. South to the SE Cor. of Sec. 7-T26N-R12W

(This information was gathered with a GPS receiver with Sub-Meter accuracy.)
 DATUM: NAD-27
 LAT: 36°44'23.9"N
 LONG: 98°31'42.4"W
 LAT: 36.739962112
 LONG: 98.528447486
 STATE PLANE COORDINATES: (US Feet)
 ZONE: OK NORTH
 X: 1845150
 Y: 633802

187298 Date of Drawing: July 25, 2012
 Invoice # 178702 Date Staked: Feb. 09, 2012 JP

FINAL AS-DRILLED PLAT
 AS-DRILLED INFORMATION
 FURNISHED BY CHESAPEAKE OPERATING