

Oklahoma Corporation Commission
Oil & Gas Conservation Division
Post Office Box 52000
Oklahoma City, Oklahoma 73152-2000
Rule 165: 10-3-25

Form 1002A

API No.: 35045231780000

Completion Report

Spud Date: March 21, 2012

OTC Prod. Unit No.: 045-208339

Drilling Finished Date: May 10, 2012

1st Prod Date: June 16, 2012

Completion Date: July 19, 2012

Drill Type: HORIZONTAL HOLE

Min Gas Allowable: Yes

Well Name: MILTON LEE 10-19-23 1H

Purchaser/Measurer: CHESAPEAKE OPERATING INC

Location: ELLIS 10 19N 23W
SW SW SW SW
232 FSL 300 FWL of 1/4 SEC
Derrick Elevation: 2501 Ground Elevation: 2483

First Sales Date: 06/21/2012

Operator: CHESAPEAKE OPERATING INC 17441
P.O. Box 18496
6100 N WESTERN AVE
OKLAHOMA CITY, OK 73154-0496

Completion Type	
X	Single Zone
	Multiple Zone
	Commingled

Location Exception
Order No
602814

Increased Density
Order No
There are no Increased Density records to display.

Casing and Cement							
Type	Size	Weight	Grade	Feet	PSI	SAX	Top of CMT
SURFACE	13 3/8	48	H-40	758		789	SURFACE
INTERMEDIATE	9 5/8	36	J-55	1508		513	SURFACE
PRODUCTION	7	26	P-110EC	8049		325	7030

Liner								
Type	Size	Weight	Grade	Length	PSI	SAX	Top Depth	Bottom Depth
LINER	4 1/2	13.5	HCP-110	5597	0	490	7818	

Total Depth: 13415

Packer	
Depth	Brand & Type
8556	MODEL R

Plug	
Depth	Plug Type
13324	PBTD

Initial Test Data										
Test Date	Formation	Oil BBL/Day	Oil-Gravity (API)	Gas MCF/Day	Gas-Oil Ratio Cu FT/BBL	Water BBL/Day	Pumpin or Flowing	Initial Shut-In Pressure	Choke Size	Flow Tubing Pressure
Jul 25, 2012	CLEVELAND	133	41	292	2195	235	FLOWING	175	64/64	118

Completion and Test Data by Producing Formation										
Formation Name: CLEVELAND			Code: 405CLVD			Class: OIL				
Spacing Orders				Perforated Intervals						
Order No	Unit Size			From			To			
231090	640			8910			13288			
Acid Volumes				Fracture Treatments						
4,000 GALLONS 15% HCL ACID				49,128 FRAC FLUID, 3,034,510 BARRELS PROPPANT						

Formation	Top
CLEVELAND	8818

Were open hole logs run? No

Date last log run:

Were unusual drilling circumstances encountered? No

Explanation:

Other Remarks
There are no Other Remarks.

Lateral Holes
Sec: 10 TWP: 19N RGE: 23W County: ELLIS
NW NE NW NW
231 FNL 752 FWL of 1/4 SEC
Depth of Deviation: 8279 Radius of Turn: 386 Direction: 2 Total Length: 4597
Measured Total Depth: 13415 True Vertical Depth: 8665 End Pt. Location From Release, Unit or Property Line: 231

FOR COMMISSION USE ONLY
Status: Accepted
1115772

API NO 35-045-23178
 OTC PROD.
 UNIT NO. 045-208339

PLEASE TYPE OR USE BLACK INK ONLY
 NOTE:
 Attach copy of original 1002A if recompleting

AS SUBMITTED

RECEIVED 1002A
 83997 2009

AUG 07 2012

OKLAHOMA CORPORATION
 COMMISSION

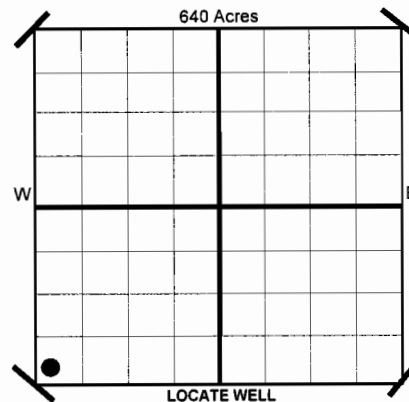
ORIGINAL
 AMENDED
 Reason Amended

COMPLETION REPORT

TYPE OF DRILLING OPERATION
 STRAIGHT HOLE DIRECTIONAL HOLE HORIZONTAL HOLE

If directional or horizontal, see reverse for bottom hole location.

COUNTY	Ellis	SEC	10	TWP	19N	RGE	23W	SPUD DATE	3/21/2012
LEASE NAME	Milton Lee 10-19-23	WELL NO						DRLG FINISHED DATE	5/10/2012
SHL		FSL		FWL OF				DATE OF WELL COMPLETION	7/19/2012
SW 1/4 SW 1/4 SW 1/4 SW 1/4		232		1/4 SEC		300		1ST PROD DATE	6/16/2012
ELEVATION		Latitude (if Known)		Longitude (if Known)					
KB	2,501	Ground	2,483						
OPERATOR NAME	CHESAPEAKE OPERATING, INC.			OTC/OCC OPERATOR NO.		17441			
ADDRESS	P.O. BOX 18496								
CITY	OKLAHOMA CITY	STATE	OK	ZIP	73154				



COMPLETION TYPE

SINGLE ZONE
 MULTIPLE ZONE
 COMMINGLED
 LOCATION EXCEPTION ORDER NO. 596002 (Interim)
 INCREASED DENSITY ORDER NO. N/A

CASING & CEMENT (Form 1002C must be attached)

TYPE	SIZE	WEIGHT	GRADE	FEET	PSI	SAX	TOP	
CONDUCTOR								
SURFACE	13 3/8	48#	H-40	758		789	Surface	
INTERMEDIATE	9 5/8"	36#	J-55	1,508		513	Surface	
INTERMEDIATE - II	7"	26#	P-110EC	8,049		325	7,030	
Production	4 1/2"	13.5#	HCP-110	7,818-13,415		490	8,610	
							TOTAL DEPTH	13,415

PACKER @ 8,556 BRAND & TYPE Model R PLUG @ TYPE PLUG @ TYPE
 PACKER @ BRAND & TYPE PLUG @ 13,324 TYPE PBTD PLUG @ TYPE

COMPLETION & TEST DATA BY PRODUCING FORMATION

405 CLVD

FORMATION	Cleveland						
SPACING & SPACING	640						
ORDER NUMBER	231090						
CLASS: Oil, Gas, Dry, Inj, Disp, Comm Disp, Svc	Oil						
PERFORATED INTERVALS	8,910 - 13,288						
ACID/VOLUME	15% HCL Acid 4,000 gal						
FRACTURE TREATMENT (Fluids/Prop Amounts)	Frac Fluid 49,128 Proppant 3034510 bbls						

Minimum Gas Allowable (165:10-17-7)

Gas Purchaser/Measurer

Chesapeake Operating, Inc.

OR

1st Sales Date

6/21/2012

Oil Allowable (165:10-13-3)

INITIAL TEST DATA

INITIAL TEST DATE	7/25/2012				
OIL-BBL/DAY	133				
OIL-GRAVITY (API)	41.45				
GAS-MCF/DAY	292				
GAS-OIL RATIO CU FT/BBL	2,195				
WATER-BBL/DAY	235				
PUMPING OR FLOWING	flowing				
INITIAL SHUT-IN PRESSURE	175				
CHOKE SIZE	64/64				
FLOW TUBING PRESSURE	118				

A record of the formations drilled through, and pertinent remarks are presented on the reverse. I declare that I have knowledge of the contents of this report and am authorized by my organization to make this report, which was prepared by me or under my supervision and direction, with the data and facts stated herein to be true, correct, and complete to the best of my knowledge and belief.

Ted Campbell
 SIGNATURE
 P.O. BOX 18496
 ADDRESS
 OKLAHOMA CITY
 CITY
 OK
 STATE
 73154
 ZIP
 TED CAMPBELL - DISTRICT MANAGER
 NAME (PRINT OR TYPE)
 8/1/2012
 DATE
 405-848-8000
 PHONE NUMBER
 aletha.dewbre@chk.com
 aleta.dewbre@chk.com

PLEASE TYPE OR USE BLACK INK ONLY
FORMATION RECORD

Give formation names and tops, if available, or descriptions and thickness of formations LEASE NAME Milton Lee 10-19-23
drilled through. Show intervals cored or drillstem tested.

WELL NO. 1H

NAMES OF FORMATIONS	TOP
Cleveland	8,818

FOR COMMISSION USE ONLY

ITD on file YES NO

APPROVED _____ DISAPPROVED _____

2) Reject Codes

Were open hole logs run? yes no

Date Last log was run N/A

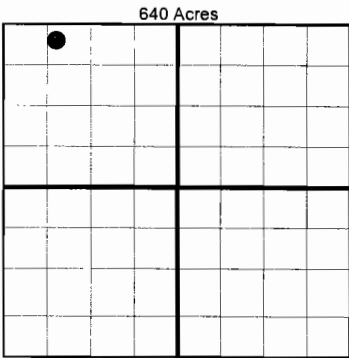
Was CO₂ encountered? yes no at what depths?

Was H₂S encountered? yes no at what depths?

Were unusual drilling circumstances encountered? yes no

If yes, briefly explain.

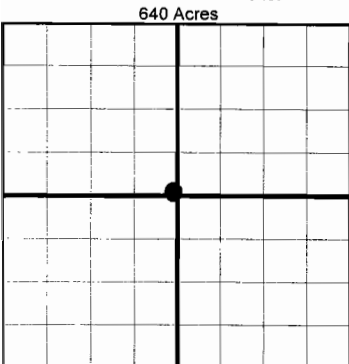
Other remarks:



If more than three drainholes are proposed, attach a separate sheet indicating the necessary information.

Direction must be stated in degrees azimuth. Please note, the horizontal drainhole and its end point must be located within the boundaries of the lease or spacing unit.

Directional surveys are required for all drainholes and directional wells.



BOTTOM HOLE LOCATION FOR DIRECTIONAL HOLE

SEC	TWP	RGE	COUNTY				
Spot Location	1/4	1/4	1/4	1/4	Feet From 1/4 Sec Lines	FNL	FWL
Measured Total Depth	True Vertical Depth		BHL From Lease, Unit, or Property Line:				

BOTTOM HOLE LOCATION FOR HORIZONTAL HOLE: (LATERALS)

LATERAL #1

SEC	TWP	RGE	COUNTY				
10	19N	23W	Ellis				
Spot Location	NW 1/4	NE 1/4	NW 1/4	NW 1/4	Feet From 1/4 Sec Lines	FNL 231	FWL 752
Depth of Deviation	8,279	Radius of Turn	386	Direction	359	Total Length	4,597
Measured Total Depth	True Vertical Depth		BHL From Lease, Unit, or Property Line:				
	13,415	8,665	231				

LATERAL #2

SEC	TWP	RGE	COUNTY			
Spot Location	1/4	1/4	1/4	Feet From 1/4 Sec Lines	FSL	FWL
Depth of Deviation	Radius of Turn		Direction	Total Length		
Measured Total Depth	True Vertical Depth		BHL From Lease, Unit, or Property Line:			

LATERAL #3

SEC	TWP	RGE	COUNTY			
Spot Location	1/4	1/4	1/4	Feet From 1/4 Sec Lines	FSL	FWL
Depth of Deviation	Radius of Turn		Direction	Total Length		
Measured Total Depth	True Vertical Depth		BHL From Lease, Unit, or Property Line:			

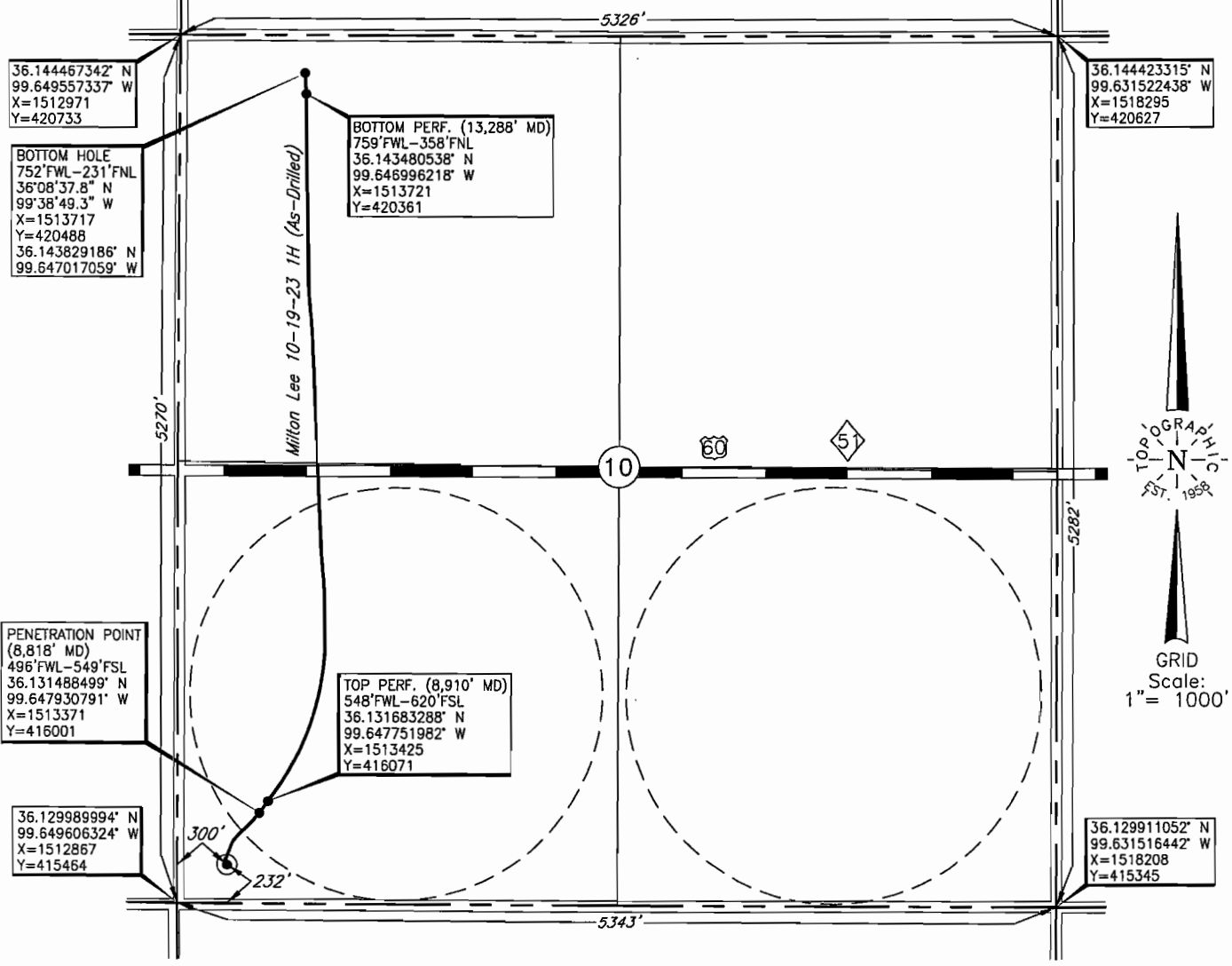
Image @ 11:04

TOPOGRAPHIC LAND SURVEYORS OF OKLAHOMA

6709 NORTH CLASSEN BLVD., OKLA. CITY, OKLA. 73116 * LOCAL (405) 843-4847 * OUT OF STATE (800) 654-3219
 Certificate of Authorization No. 1293.

ELLIS County, Oklahoma

232'FSL - 300'FWL Section 10 Township 19N Range 23W I.M.



Distances shown in (parenthesis) are calculated based upon the Quarter Section being 2640 feet, those shown in [brackets] are based on GLO (General Land Office) distances and have NOT been measured on the ground.

Operator: CHESAPEAKE OPERATING, INC.

Lease Name: MILTON LEE 10-19-23

Well No.: 1H

ELEVATION:
2483' Gr. at Stake

Topography & Vegetation Loc. fell in sloping pasture, ±200' North of right-of-way fence

Good Drill Site? Yes Reference Stakes or Alternate Location
 Stakes Set None

Best Accessibility to Location From South off county road

Distance & Direction
 from Hwy Jct or Town From Jct. St. Hwy. 51 and US Hwy. 283 South at Arnett, OK, go ±7.0 mi. East
on St. Hwy. 51, then ±0.5 mi. South, then 1.0 mi. West to the SW Cor. of Sec. 10-T19N-R23W

(This information was gathered with a GPS receiver with Sub-Meter accuracy.)
 DATUM: NAD-27
 LAT: 36°07'50.2"N
 LONG: 99°38'54.9"W
 LAT: 36.130622146
 LONG: 99.648593391
 STATE PLANE
 COORDINATES: (US Feet)
 ZONE: OK NORTH
 X: 1513170
 Y: 415689

185834 Date of Drawing: June 14, 2012
 Invoice # 176540 Date Staked: Jan. 18, 2012 JP

FINAL AS-DRILLED PLAT

AS-DRILLED INFORMATION
 FURNISHED BY CHESAPEAKE OPERATING