

Oklahoma Corporation Commission
Oil & Gas Conservation Division
Post Office Box 52000
Oklahoma City, Oklahoma 73152-2000
Rule 165: 10-3-25

Form 1002A

API No.: 35003222100000

Completion Report

Spud Date: January 18, 2012

OTC Prod. Unit No.: 003-208624

Drilling Finished Date: February 09, 2012

1st Prod Date: August 28, 2012

Completion Date: March 02, 2012

Drill Type: HORIZONTAL HOLE

Min Gas Allowable: Yes

Well Name: SYMNS 32-27-11 1H

Purchaser/Measurer: CHESAPEAKE OPERATING INC

Location: ALFALFA 32 27N 11W
N2 N2 NE NE
200 FNL 660 FEL of 1/4 SEC
Derrick Elevation: 1222 Ground Elevation: 1207

First Sales Date: 08/28/2012

Operator: CHESAPEAKE OPERATING INC 17441
P.O. Box 18496
6100 N WESTERN AVE
OKLAHOMA CITY, OK 73154-0496

Completion Type	
X	Single Zone
	Multiple Zone
	Commingled

Location Exception	
Order No	
	593432
	600040

Increased Density	
Order No	
There are no Increased Density records to display.	

Casing and Cement							
Type	Size	Weight	Grade	Feet	PSI	SAX	Top of CMT
SURFACE	13 3/8	48	J-55	247		230	SURFACE
INTERMEDIATE	9 5/8	36	J-55	1500		535	SURFACE
INTERMEDIATE	7	26	P-110	5519		250	2520

Liner								
Type	Size	Weight	Grade	Length	PSI	SAX	Top Depth	Bottom Depth
LINER	4 1/2	13.5	HCP, P-110	5229	0	560	5014	10243

Total Depth: 10243

Packer	
Depth	Brand & Type
4964	R

Plug	
Depth	Plug Type
10153	PBTD

Initial Test Data										
Test Date	Formation	Oil BBL/Day	Oil-Gravity (API)	Gas MCF/Day	Gas-Oil Ratio Cu FT/BBL	Water BBL/Day	Pumpin or Flowing	Initial Shut-In Pressure	Choke Size	Flow Tubing Pressure
Sep 05, 2012	MISSISSIPPIAN	100		916	9160	5009	ARTIFICIA			1025

Completion and Test Data by Producing Formation										
Formation Name: MISSISSIPPIAN			Code: 359MSSP			Class: OIL				
Spacing Orders				Perforated Intervals						
Order No	Unit Size			From			To			
593207	640			5510			10142			
Acid Volumes				Fracture Treatments						
27,500 GALLONS 15% HCL ACID				52,957 BARRELS FRAC FLUID, 2,317,625 POUNDS PROPPANT						

Formation	Top
MISSISSIPPIAN	5430

Were open hole logs run? Yes

Date last log run: February 07, 2012

Were unusual drilling circumstances encountered? No

Explanation:

Other Remarks
There are no Other Remarks.

Lateral Holes
Sec: 32 TWP: 27N RGE: 11W County: ALFALFA
SW SE SE SE
67 FSL 654 FEL of 1/4 SEC
Depth of Deviation: 5096 Radius of Turn: 344 Direction: 182 Total Length: 4813
Measured Total Depth: 10243 True Vertical Depth: 5440 End Pt. Location From Release, Unit or Property Line: 67

FOR COMMISSION USE ONLY
Status: Accepted
1116377

API NO. 35-003-22210
 OTC PROD.
 UNIT NO. 003-208624

PLEASE TYPE OR USE BLACK INK ON NOTE:
 Attach copy of original 1002A if recomplet



RECEIVED 642393 Form 1002A Rev. 2009

SEP 26 2012

OKLAHOMA CORPORATION COMMISSION

ORIGINAL
 AMENDED
 Reason Amended

COMPLETION REPORT

TYPE OF DRILLING OPERATION
 STRAIGHT HOLE DIRECTIONAL HOLE HORIZONTAL HOLE
 SERVICE WELL

SPUD DATE 1/18/2012

DRLG FINISHED DATE 2/9/2012

DATE OF WELL COMPLETION 3/2/2012

1ST PROD DATE 8/28/2012

RECOMP DATE

Longitude (if Known)

COUNTY ALFALFA SEC 32 TWP 27N RGE 11W

LEASE NAME SYMNS 32-27-11 WELL NO 1H

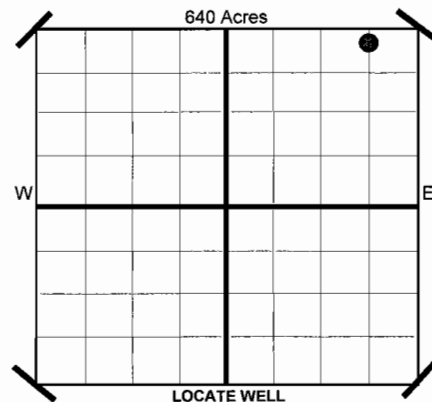
SHL N2 1/4 N2 1/4 NE 1/4 NE 1/4 FNL 200 FEL OF 1/4 SEC 660

ELEVATION Derrick Fl 1,222 Ground 1,207 Latitude (if Known)

OPERATOR NAME CHESAPEAKE OPERATING, INC. OTC/OCC OPERATOR NO. 17441

ADDRESS P.O. BOX 18496

CITY OKLAHOMA CITY STATE OK ZIP 73154



COMPLETION TYPE

SINGLE ZONE
 MULTIPLE ZONE Application Date
 COMMINGLED Application Date
 LOCATION EXCEPTION ORDER NO. 593432 (Interim)
 INCREASED DENSITY ORDER NO. N/A

CASING & CEMENT (Form 1002C must be attached)

TYPE	SIZE	WEIGHT	GRADE	FEET	PSI	SAX	TOP	
CONDUCTOR								
SURFACE	13 3/8"	48#	J-55	247		230	Surface	
INTERMEDIATE	9 5/8"	36#	J-55	1,500		535	Surface	
INTERMEDIATE	7"	26#	P-110	5,519		250	2,520	
LINER	4 1/2"	13.5#	HCP,P-110	5,014-10,243		560	5,328	
							TOTAL DEPTH	10,243

PACKER @ 4.964 BRAND & TYPE R
 PLUG @ 10,153 TYPE PBDT
 PLUG @ TYPE

COMPLETION & TEST DATA BY PRODUCING FORMATION

FORMATION	MISSISSIPPIAN						
SPACING & SPACING ORDER NUMBER	640 593207						
CLASS: Oil, Gas, Dry, Inj. Disp, Comm Disp, Svc	Oil						
PERFORATED INTERVALS	5,510-10,142						
ACID/VOLUME	15% HCL Acid 27,500 gal						
FRACTURE TREATMENT (Fluids/Prop Amounts)	Frac Fluid 52,957 bbbls Proppant 2,317,625 lbs						

Minimum Gas Allowable (165:10-17-7) OR Gas Purchaser/Measurer Chesapeake Operating, Inc.
 Oil Allowable (165:10-13-3) 1st Sales Date 8/28/2012

INITIAL TEST DATA

INITIAL TEST DATE	9/5/2012				
OIL-BBL/DAY	100				
OIL-GRAVITY (API)					
GAS-MCF/DAY	916				
GAS-OIL RATIO CU FT/BBL	9,160				
WATER-BBL/DAY	5,009				
PUMPING OR FLOWING	ARTIFICIAL LIFT				
INITIAL SHUT-IN PRESSURE					
CHOKE SIZE					
FLOW TUBING PRESSURE	1,025				

A record of the formations drilled through, and pertinent remarks are presented on the reverse. I declare that I have knowledge of the contents of this report and am authorized by my organization to make this report, which was prepared by me or under my supervision and direction, with the data and facts stated herein to be true, correct, and complete to the best of my knowledge and belief.

David Craycraft
 SIGNATURE David Craycraft- DISTRICT MANAGER 9/20/2012 405-848-8000
 P.O. BOX 18496 OKLAHOMA CITY OK 73154 dawn.richardson@chk.com
 ADDRESS CITY STATE ZIP EMAIL ADDRESS

PLEASE TYPE OR USE BLACK INK ONLY
FORMATION RECORD

Give formation names and tops, if available, or descriptions and thickness of formations drilled through. Show intervals cored or drillstem tested.

LEASE NAME SYMNS 32-27-11

WELL NO. 1H

NAMES OF FORMATIONS	TOP
MISSISSIPPIAN	5,430

FOR COMMISSION USE ONLY

ITD on file YES NO

APPROVED _____ DISAPPROVED _____

2) Reject Codes

Were open hole logs run? yes no

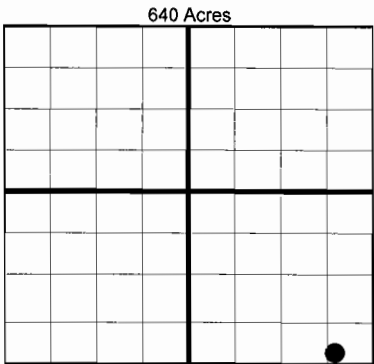
Date Last log was run 2/7/2012

Was CO₂ encountered? yes no at what depths?

Was H₂S encountered? yes no at what depths?

Were unusual drilling circumstances encountered? yes no
If yes, briefly explain.

Other remarks:



BOTTOM HOLE LOCATION FOR DIRECTIONAL HOLE

SEC	TWP	RGE	COUNTY				
Spot Location	1/4	1/4	1/4	1/4	Feet From 1/4 Sec Lines	FSL	FWL
Measured Total Depth	True Vertical Depth		BHL From Lease, Unit, or Property Line:				

BOTTOM HOLE LOCATION FOR HORIZONTAL HOLE: (LATERALS)

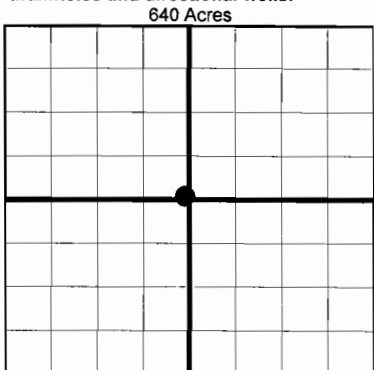
LATERAL #1

SEC	TWP	RGE	COUNTY				
32	27N	11W	ALFALFA				
Spot Location	SW 1/4	SE 1/4	SE 1/4	SE 1/4	Feet From 1/4 Sec Lines	FSL 67	FEL 654
Depth of Deviation	5,096	Radius of Turn	344	Direction	182	Total Length	4,813
Measured Total Depth	True Vertical Depth		BHL From Lease, Unit, or Property Line:				
10,243	5,440		67				

If more than three drainholes are proposed, attach a separate sheet indicating the necessary information.

Direction must be stated in degrees azimuth. Please note, the horizontal drainhole and its end point must be located within the boundaries of the lease or spacing unit.

Directional surveys are required for all drainholes and directional wells.



LATERAL #2

SEC	TWP	RGE	COUNTY				
Spot Location	1/4	1/4	1/4	1/4	Feet From 1/4 Sec Lines	FSL	FWL
Depth of Deviation	Radius of Turn		Direction		Total Length		
Measured Total Depth	True Vertical Depth		BHL From Lease, Unit, or Property Line:				

LATERAL #3

SEC	TWP	RGE	COUNTY				
Spot Location	1/4	1/4	1/4	1/4	Feet From 1/4 Sec Lines	FSL	FWL
Depth of Deviation	Radius of Turn		Direction		Total Length		
Measured Total Depth	True Vertical Depth		BHL From Lease, Unit, or Property Line:				