

Oklahoma Corporation Commission
 Oil & Gas Conservation Division
 Post Office Box 52000
 Oklahoma City, Oklahoma 73152-2000
 Rule 165: 10-3-25

Form 1002A

API No.: 35129235130000

Completion Report

Spud Date: May 22, 2011

OTC Prod. Unit No.: 129-206450

Drilling Finished Date: July 14, 2011

1st Prod Date: September 25, 2011

Completion Date: September 24, 2011

Drill Type: HORIZONTAL HOLE

Min Gas Allowable: Yes

Well Name: SCOTT G 15-11-23 1H

Purchaser/Measurer: CHESAPEAKE OPERATING INC

Location: ROGER MILLS 15 11N 23W
 S2 S2 SE SE
 240 FSL 660 FEL of 1/4 SEC
 Derrick Elevation: 2105 Ground Elevation: 2083

First Sales Date: 09/25/2011

Operator: CHESAPEAKE OPERATING INC 17441
 P.O. Box 18496
 6100 N WESTERN AVE
 OKLAHOMA CITY, OK 73154-0496

Completion Type	
X	Single Zone
	Multiple Zone
	Commingled

Location Exception	
Order No	
	591076
	600149

Increased Density	
Order No	
There are no Increased Density records to display.	

Casing and Cement							
Type	Size	Weight	Grade	Feet	PSI	SAX	Top of CMT
SURFACE	9 5/8	40	J-55	1500		620	SURFACE
INTERMEDIATE	7	29	HCP-110	10880		550	6729

Liner								
Type	Size	Weight	Grade	Length	PSI	SAX	Top Depth	Bottom Depth
LINER	4 1/2	13.5	P-110	5297	0	630	10590	

Total Depth: 15997

Packer	
Depth	Brand & Type
There are no Packer records to display.	

Plug	
Depth	Plug Type
15875	PBTD

Initial Test Data										
Test Date	Formation	Oil BBL/Day	Oil-Gravity (API)	Gas MCF/Day	Gas-Oil Ratio Cu FT/BBL	Water BBL/Day	Pumpin or Flowing	Initial Shut-In Pressure	Choke Size	Flow Tubing Pressure
Apr 14, 2012	HOGSHOOTER	42	54	1693	40310	13	FLOWING		64/64	250

Completion and Test Data by Producing Formation										
Formation Name: HOGSHOOTER			Code: 405HGSR			Class: GAS				
Spacing Orders				Perforated Intervals						
Order No		Unit Size		From			To			
581128		640		11620			15862			
Acid Volumes				Fracture Treatments						
There are no Acid Volume records to display.				65,780 BSW + LINEAR GEL + 3,157,820 POUNDS 30/50 SAND						

Formation	Top
HOGSHOOTER	11378

Were open hole logs run? No

Date last log run:

Were unusual drilling circumstances encountered? No

Explanation:

Other Remarks
There are no Other Remarks.

Lateral Holes
Sec: 15 TWP: 11N RGE: 23W County: ROGER MILLS
NW NE NE NE
248 FNL 547 FEL of 1/4 SEC
Depth of Deviation: 11040 Radius of Turn: 335 Direction: 1 Total Length: 4599
Measured Total Depth: 15997 True Vertical Depth: 11378 End Pt. Location From Release, Unit or Property Line: 248

FOR COMMISSION USE ONLY
Status: Accepted
1114723

API NO. 129-23513
OTC PROD.
UNIT NO. 129-206450

PLEASE TYPE OR USE BLACK INK
NOTE:
Attach copy of original 1002A if revised

AS SUBMITTED

COMMISSION
vision
152-2000

RECEIVED

MAY 18 2012

ORIGINAL
 AMENDED
Reason Amended

TYPE OF DRILLING OPERATION
 STRAIGHT HOLE DIRECTIONAL HOLE HORIZONTAL HOLE

SPUD DATE 5/22/2011

DRLG FINISHED DATE 7/14/2011

If directional or horizontal, see reverse for bottom hole location.

COUNTY Roger Mills SEC 15 TWP 11N RGE 23W

DATE OF WELL COMPLETION 9/24/2011

LEASE NAME Scott G 15-11-23 WELL NO 1H

1ST PROD DATE 9/25/2011

SHL S2 1/4 S2 1/4 SE 1/4 SE 1/4 FSL 240 FEL OF 1/4 SEC 660

RECOMP DATE

ELEVATION Derrick Fl 2,105 Ground 2,083

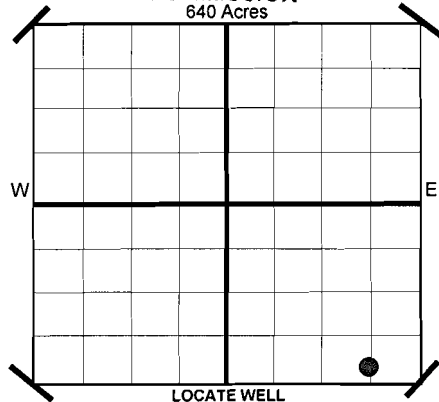
Longitude (if Known)

Latitude (if Known)

OPERATOR NAME CHESAPEAKE OPERATING, INC. OTC/OCC OPERATOR NO. 17441

ADDRESS P.O. BOX 18496

CITY OKLAHOMA CITY STATE OK ZIP 73154



COMPLETION TYPE

SINGLE ZONE
 MULTIPLE ZONE
Application Date
 COMMINGLED
Application Date
LOCATION 591076
EXCEPTION ORDER NO.
INCREASED DENSITY ORDER NO. N/A

CASING & CEMENT (Form 1002C must be attached)

TYPE	SIZE	WEIGHT	GRADE	FEET	PSI	SAX	TOP
CONDUCTOR							
SURFACE	9-5/8"	40#	J-55	1,500		620	Surface
INTERMEDIATE	7"	29#	HCP-110	10,880		550	6,729
PRODUCTION							
LINER	4-1/2"	13.5#	P-110	10,590-15,887		630	10,612
							15,977

PACKER @ BRAND & TYPE
PACKER @ BRAND & TYPE

PLUG @ TYPE PLUG @ 15,875 TYPE PBDT
PLUG @ TYPE PLUG @ TYPE

TOTAL DEPTH

COMPLETION & TEST DATA BY PRODUCING FORMATION

FORMATION	Hogshooter						
SPACING & SPACING ORDER NUMBER	640 581128						
CLASS: Oil, Gas, Dry, Inj, Disp, Comm Disp, Svc	Gas						
PERFORATED INTERVALS	11,620 - 15,862						
ACID/VOLUME							
FRACTURE TREATMENT (Fluids/Prop Amounts)	65,780 BSW + linear gel + 3,157,820# 30/50 sand						

SCANNED

Minimum Gas Allowable (165-10-17-7) Gas Purchaser/Measurer Chesapeake Operating, Inc.
 OR 1st Sales Date 9/25/2011

INITIAL TEST DATA Oil Allowable (165-10-13-3)

INITIAL TEST DATE	4/14/2012				
OIL-BBL/DAY	42				
OIL-GRAVITY (API)	54				
GAS-MCF/DAY	1,693				
GAS-OIL RATIO CU FT/BBL	40,310				
WATER-BBL/DAY	13				
PUMPING OR FLOWING	Flowing				
INITIAL SHUT-IN PRESSURE	N/A				
CHOKE SIZE	64/64				
FLOW TUBING PRESSURE	250				

A record of the formations drilled through, and pertinent remarks are presented on the reverse. I declare that I have knowledge of the contents of this report and am authorized by my organization to make this report, which was prepared by me or under my supervision and direction, with the data and facts stated herein to be true, correct, and complete to the best of my knowledge and belief.

SIGNATURE MICHAEL PARK - DISTRICT MANAGER 5/16/2012 405-848-8000
P.O. BOX 18496 OKLAHOMA CITY OK 73154 juanita.cooper@chk.com
ADDRESS CITY STATE ZIP EMAIL ADDRESS

PLEASE TYPE OR USE BLACK INK ONLY
FORMATION RECORD

Give formation names and tops, if available, or descriptions and thickness of formations drilled through. Show intervals cored or drillstem tested.

LEASE NAME Scott G 15-11-23

WELL NO. 1H

NAMES OF FORMATIONS	TOP
Hogshooter	11,378

FOR COMMISSION USE ONLY

ITD on file YES NO

APPROVED _____ DISAPPROVED _____

2) Reject Codes

Were open hole logs run? yes no

Date Last log was run N/A

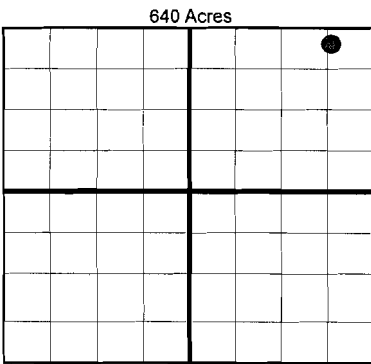
Was CO₂ encountered? yes no at what depths?

Was H₂S encountered? yes no at what depths?

Were unusual drilling circumstances encountered? yes no

If yes, briefly explain.

Other remarks:



BOTTOM HOLE LOCATION FOR DIRECTIONAL HOLE

SEC	TWP	RGE	COUNTY				
Spot Location	1/4	1/4	1/4	1/4	Feet From 1/4 Sec Lines	FSL	FWL
Measured Total Depth	True Vertical Depth		BHL From Lease, Unit, or Property Line:				

BOTTOM HOLE LOCATION FOR HORIZONTAL HOLE: (LATERALS)

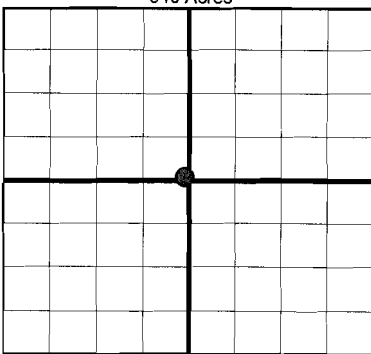
LATERAL #1

SEC	TWP	RGE	COUNTY	Roger Mills			
Spot Location	NW 1/4	NE 1/4	NE 1/4	NE 1/4	Feet From 1/4 Sec Lines	FNL 248	FEL 547
Depth of Deviation	11,040	Radius of Turn	335	Direction	1.5	Total Length	4,599
Measured Total Depth	True Vertical Depth		BHL From Lease, Unit, or Property Line:				
	15,977	11,374	248				

If more than three drainholes are proposed, attach a separate sheet indicating the necessary information.

Direction must be stated in degrees azimuth. Please note, the horizontal drainhole and its end point must be located within the boundaries of the lease or spacing unit.

Directional surveys are required for all drainholes and directional wells.



LATERAL #2

SEC	TWP	RGE	COUNTY				
Spot Location	1/4	1/4	1/4	1/4	Feet From 1/4 Sec Lines	FSL	FWL
Depth of Deviation	Radius of Turn		Direction		Total Length		
Measured Total Depth	True Vertical Depth		BHL From Lease, Unit, or Property Line:				

LATERAL #3

SEC	TWP	RGE	COUNTY				
Spot Location	1/4	1/4	1/4	1/4	Feet From 1/4 Sec Lines	FSL	FWL
Depth of Deviation	Radius of Turn		Direction		Total Length		
Measured Total Depth	True Vertical Depth		BHL From Lease, Unit, or Property Line:				

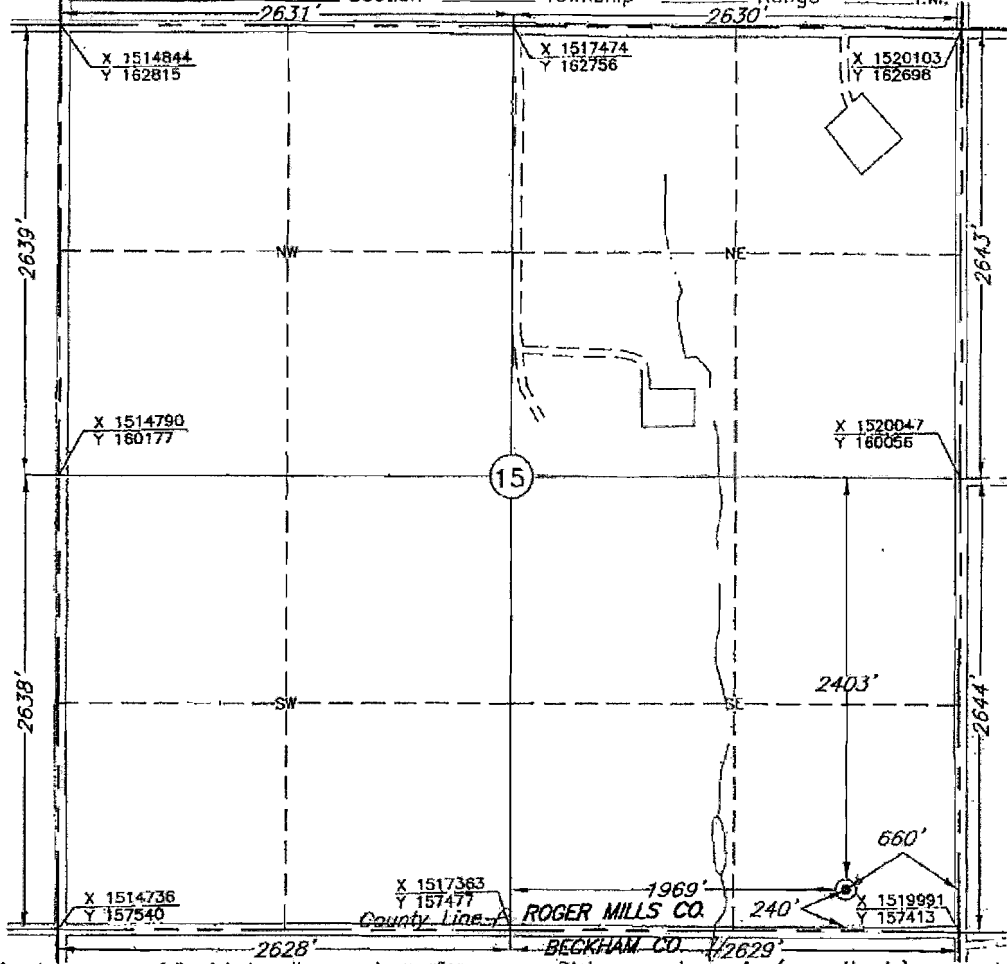
Image @ 1002A

TOPOGRAPHIC LAND SURVEYORS OF OKLAHOMA
6709 NORTH CLASSEN BLVD., OKLA. CITY, OKLA. 73116 * LOCAL (405) 843-4847 * OUT OF STATE (800) 654-3219
Certificate of Authorization No. 1293.

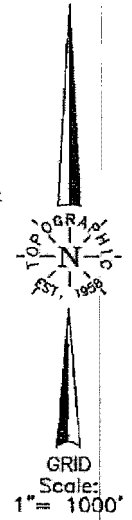
ROGER MILLS County, Oklahoma

240' FSL - 660' FEL Section 15 Township 11N Range 23W 1.M.

CORNER COORDINATES ARE TAKEN FROM POINTS SURVEYED IN THE FIELD.



API
129-23513



This location has been very carefully staked on the ground according to the best official survey records, maps, and photographs available to us, but its accuracy is not guaranteed. Review this plat and notify us immediately of any possible discrepancy.

Distances shown in (parenthesis) are calculated based upon the Quarter Section being 2640 feet, those shown in [brackets] are based on GLO (General Land Office) distances and have not been measured.

Operator: CHESAPEAKE OPERATING, INC.
Lease Name: SCOTT G 15-11-23

Well No.: 1H
ELEVATION:
2083' Gr. at Stake

Topography & Vegetation Loc. fell in field, 200' North of right-of-way fence

Good Drill Site? Yes Reference Stakes or Alternate Location
Stakes Set None

Best Accessibility to Location From South
Distance & Direction From Jct. of St. Hwy. 6 and US. Hwy. 283, go 2.5 miles East on St. Hwy. 6, then ±1 mile North to the SE Cor. of Sec. 15-T11N-R23W

SCANNED

(The following information was gathered using a GPS receiver Accuracy ±2-3 Meters.)

GPS
DATUM: NAD-27
LAT: 35°25'19.8"N
LONG: 99°36'47.5"W
STATE PLANE
COORDINATES:
ZONE: OK NORTH
X: 1519336
Y: 157669

Revision A Date of Drawing: Apr. 18, 2011
Invoice # 162599 Date Staked: Dec. 6, 2010 LC

CERTIFICATE:

I, Virgil R. Rogers a Oklahoma Licensed Land Surveyor and an authorized agent of Topographic Land Surveyors of Oklahoma, do hereby certify that the above described well location was surveyed and staked on the ground as shown herein.

Virgil R. Rogers
Oklahoma Reg. No. 569

