

Oklahoma Corporation Commission  
Oil & Gas Conservation Division  
Post Office Box 52000  
Oklahoma City, Oklahoma 73152-2000  
Rule 165: 10-3-25

Form 1002A

API No.: 35069201330001

**Completion Report**

Spud Date: March 22, 2012

OTC Prod. Unit No.: 069-208063

Drilling Finished Date: April 26, 2012

1st Prod Date: July 19, 2012

Completion Date: June 22, 2012

**Drill Type: HORIZONTAL HOLE**

Min Gas Allowable: Yes

Well Name: VELIN 1-22H15

Purchaser/Measurer:

Location: JOHNSTON 22 4S 4E  
SW NW NE NE  
337 FNL 1129 FEL of 1/4 SEC  
Derrick Elevation: 0 Ground Elevation: 700

First Sales Date:

Operator: XTO ENERGY INC 21003

810 HOUSTON ST  
FORT WORTH, TX 76102-6203

Completion Type		Location Exception		Increased Density	
X	Single Zone	<b>Order No</b>		<b>Order No</b>	
	Multiple Zone	593986		593935	
	Commingled	600880			

Casing and Cement							
Type	Size	Weight	Grade	Feet	PSI	SAX	Top of CMT
SURFACE	9 5/8	36	K-55	1028		340	SURFACE
PRODUCTION	5 1/2	20	P-110	15316		1875	5520

Liner								
Type	Size	Weight	Grade	Length	PSI	SAX	Top Depth	Bottom Depth
There are no Liner records to display.								

**Total Depth: 15316**

Packer	
Depth	Brand & Type
There are no Packer records to display.	

Plug	
Depth	Plug Type
There are no Plug records to display.	

Initial Test Data										
Test Date	Formation	Oil BBL/Day	Oil-Gravity (API)	Gas MCF/Day	Gas-Oil Ratio Cu FT/BBL	Water BBL/Day	Pumpin or Flowing	Initial Shut-In Pressure	Choke Size	Flow Tubing Pressure
Jul 23, 2012	WOODFORD	46	47	1270	27609	995	FLOWING	1650	48	

Completion and Test Data by Producing Formation										
Formation Name: WOODFORD			Code: 319WDFD			Class: GAS				
<b>Spacing Orders</b>				<b>Perforated Intervals</b>						
<b>Order No</b>	<b>Unit Size</b>			<b>From</b>			<b>To</b>			
559187	640			10217			15215			
<b>Acid Volumes</b>				<b>Fracture Treatments</b>						
39,000 GALLONS FE / HCL				13 STAGES - 193,220 BTW, 790,500 POUNDS 100 MESH, 2,341,360 POUNDS 40/70, 980,985 POUNDS 30/50						

Formation	Top
WOODFORD	9905

Were open hole logs run? No

Date last log run:

Were unusual drilling circumstances encountered? No

Explanation:

Other Remarks
IRREGULAR SECTION

Lateral Holes
Sec: 15 TWP: 4S RGE: 4E County: JOHNSTON
NW NE NE NE
93 FNL 344 FEL of 1/4 SEC
Depth of Deviation: 6554 Radius of Turn: 2389 Direction: 74 Total Length: 826
Measured Total Depth: 15316 True Vertical Depth: 9035 End Pt. Location From Release, Unit or Property Line: 93

FOR COMMISSION USE ONLY
Status: Accepted
1115832

API NO. 069-20133  
 OTC PROD. UNIT NO. 069-208063

PLEASE TYPE OR USE BLACK INK  
 NOTE: Attach copy of original 1002A if recorded

**AS SUBMITTED**

RECEIVED Form 1002A Rev. 2007

AUG 13 2012

OKLAHOMA CORPORATION COMMISSION

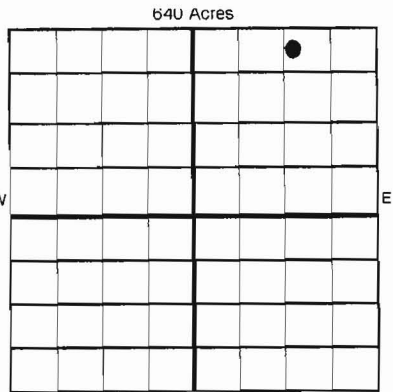
ORIGINAL  
 AMENDED  
 Reason Amended

TYPE OF DRILLING OPERATION  
 STRAIGHT HOLE  DIRECTIONAL HOLE  HORIZONTAL HOLE  
 SERVICE WELL

SPUD DATE 3/22/2012  
 DRUG FINISHED 4/26/2012

If directional or horizontal, see reverse for bottom hole location.

COUNTY Johnston SEC 22 TWP 4S RGE 4E WELL COMPLETION 6/22/2012  
 LEASE NAME Velin WELL NO. 1-22H15 1ST PROD DATE 7/19/2012  
 SHL SW 1/4 NW 1/4 NE 1/4 NE 1/4 FNL 337 FEL OF 1/4 SEC 1129 RECOMP DATE  
 ELEVATION Derrick Fl GL: 700' Ground Latitude if Known 34°12'02.1"N Longitude if Known 96°52'00.3"W  
 OPERATOR NAME XTO ENERGY INC. OTC/OCC OPERATOR NO. 21003  
 ADDRESS 210 PARK AVENUE, SUITE 2350  
 CITY OKLAHOMA CITY STATE OKLAHOMA ZIP 73102



COMPLETION TYPE  
 SINGLE ZONE  
 MULTIPLE ZONE  
 COMMINGLED  
 LOCATION EXCEPTION ORDER NO. 593986  
 INCREASED DENSITY ORDER NO. 593935

CASING & CEMENT (Form 1002C must be attached)

TYPE	SIZE	WEIGHT	GRADE	FEET	PSI	SAX	TOP OF CMI
Conductor							
Surface	9 5/8"	36	K-55	1028		340	Surface
Intermediate							
Production	5 1/2"	20	P-110	15,316		1875	5520
Liner							

PACKER @ \_\_\_\_\_ BRAND & TYPE \_\_\_\_\_ PLUG @ \_\_\_\_\_ TYPE \_\_\_\_\_ PLUG @ \_\_\_\_\_ TYPE \_\_\_\_\_ TOTAL DEPTH **15,316'**  
 PACKER @ \_\_\_\_\_ BRAND & TYPE \_\_\_\_\_ PLUG @ \_\_\_\_\_ TYPE \_\_\_\_\_ PLUG @ \_\_\_\_\_ TYPE \_\_\_\_\_

COMPLETION & TEST DATA BY PRODUCING FORMATION *319 WDFD*

FORMATION	WOODFORD	13 STAGES				
SPACING & SPACING ORDER NUMBER	640: 559187					
CLASS: Oil, Gas, Dry, Inj, Disp, Comm Disp, Svc	Gas					
PERFORATED INTERVALS	10,217-15,215'					
	39,000 gals FE/HC1					
ACID/VOLUME Fracture Treatment (Fluids/Prop Amounts)	193,220 BTW					
	790,500# 100 Mesh					
	2,341,360# 40/70					
	980,985# 30/50					

INITIAL TEST DATA  Request minimum gas allowable (165:10-17-7) Gas Purchaser/Measurer \_\_\_\_\_ 1st Sales Date \_\_\_\_\_

INITIAL TEST DATE	7/23/2012			
OIL-BBL/DAY	46			
OIL-GRAVITY ( API)	47			
GAS-MCF/DAY	1270			
GAS-OIL RATIO CU FT/BBL	27609			
WATER-BBL/DAY	995			
PUMPING OR FLOWING	Flowing			
INITIAL SHUT-IN PRESSURE	1650			
CHOKE SIZE	48			
FLOW TUBING PRESSURE				

A record of the formations drilled through, and pertinent remarks are presented on the reverse. I declare that I have knowledge of the contents of this report and am authorized by my organization to make this report, which was prepared by me or under my supervision and direction, with the data and facts stated herein to be true, correct, and complete to the best of my knowledge and belief.

*Debbie Waggoner* Signature DATE 8/6/2012 PHONE NUMBER 405-232-4011  
 Debbie Waggoner, Regulatory Analyst NAME (PRINT OR TYPE)  
 210 Park Avenue, Suite 2350 Oklahoma City Oklahoma 73102 debbie\_waggoner@xtoenergy.com  
 ADDRESS CITY STATE ZIP EMAIL ADDRESS

SCANNED

PLEASE TYPE OR USE BLACK INK ONLY

FORMATION RECORD

Give formation names and tops, if available, or descriptions and thickness of formations drilled through. Show intervals cored or drillstem tested.

LEASE NAME VELIN

WELL NO. 1-22H15

NAMES OF FORMATIONS	TOP
WOODFORD	9905'

FOR COMMISSION USE ONLY

ITD on file  YES  NO

APPROVED \_\_\_\_\_ DISAPPROVED \_\_\_\_\_

2) Reject Codes

\_\_\_\_\_

\_\_\_\_\_

\_\_\_\_\_

\_\_\_\_\_

Were open hole logs run? yes  no

Date Last log was run \_\_\_\_\_

Was CO<sub>2</sub> encountered? yes  no  at what depths? \_\_\_\_\_

Was H<sub>2</sub>S encountered? yes  no  at what depths? \_\_\_\_\_

Were unusual drilling circumstances encountered? \_\_\_\_\_ yes  no

If yes, briefly explain. \_\_\_\_\_

*Per Pebbie Waggoner*

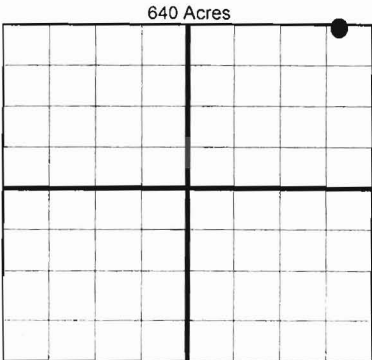
Other remarks: IRREGULAR SECTION

\_\_\_\_\_

\_\_\_\_\_

\_\_\_\_\_

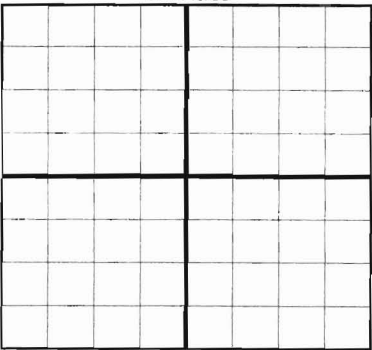
\_\_\_\_\_



If more than three drainholes are proposed, attach a separate sheet indicating the necessary information.

Direction must be stated in degrees azimuth. Please note, the horizontal drainhole and its end point must be located within the boundaries of the lease or spacing unit.

**Directional surveys are required for all drainholes and directional wells.**



**BOTTOM HOLE LOCATION FOR DIRECTIONAL HOLE**

SEC	TWP	RGE	COUNTY
Spot Location	Feet From 1/4 Sec Lines		
1/4 1/4 1/4 1/4	FSL	FWL	
Measured Total Depth	True Vertical Depth	BHL From Lease, Unit, or Property Line:	

**BOTTOM HOLE LOCATION FOR HORIZONTAL HOLE: (LATERALS)**

**LATERAL #1**

SEC	TWP	RGE	COUNTY
15	4S	4E	JOHNSTON
Spot Location	Feet From 1/4 Sec Lines		
NW 1/4 NE 1/4 NE 1/4 NE 1/4	337	FNL	4127.3 FWL
Depth of Deviation	Radius of Turn	Direction	Total Length
6554	2389.9	74.5°	826.6'
Measured Total Depth	True Vertical Depth	End Pt Location From Lease, Unit or Property Line:	
15316	9035	337 FNL & 4127.3 FWL	

**LATERAL #2**

SEC	TWP	RGE	COUNTY
Spot Location	Feet From 1/4 Sec Lines		
1/4 1/4 1/4 1/4	FSL	FWL	
Depth of Deviation	Radius of Turn	Direction	Total Length
Measured Total Depth	True Vertical Depth	End Pt Location From Lease, Unit or Property Line:	

**LATERAL #3**

SEC	TWP	RGE	COUNTY
Spot Location	Feet From 1/4 Sec Lines		
1/4 1/4 1/4 1/4	FSL	FWL	
Depth of Deviation	Radius of Turn	Direction	Total Length
Measured Total Depth	True Vertical Depth	End Pt Location From Lease, Unit or Property Line:	