

Oklahoma Corporation Commission  
Oil & Gas Conservation Division  
Post Office Box 52000  
Oklahoma City, Oklahoma 73152-2000  
Rule 165: 10-3-25

Form 1002A

API No.: 35081241000000

**Completion Report**

Spud Date: April 20, 2012

OTC Prod. Unit No.: 081-207896

Drilling Finished Date: May 19, 2012

1st Prod Date: June 27, 2012

Completion Date: June 27, 2012

**Drill Type: HORIZONTAL HOLE**  
**DIRECTIONAL HOLE**

Min Gas Allowable: Yes

Well Name: PONTUS 1-30H

Purchaser/Measurer: SCISSORTAIL ENERGY

Location: LINCOLN 29 14N 5E  
NW NW NW NW  
2418 FSL 187 FWL of 1/4 SEC  
Derrick Elevation: 0 Ground Elevation: 957

First Sales Date: 06/27/2012

Operator: EQUAL ENERGY US INC 22671

4801 GAILLARDIA PKWY STE 325  
OKLAHOMA CITY, OK 73142-1920

Completion Type	
X	Single Zone
	Multiple Zone
	Commingled

Location Exception
Order No
599329

Increased Density
Order No
There are no Increased Density records to display.

Casing and Cement							
Type	Size	Weight	Grade	Feet	PSI	SAX	Top of CMT
SURFACE	9 5/8	36	J-55	633		275	SURFACE
INTERMEDIATE	7	26	J-55	5413		200	3781

Liner								
Type	Size	Weight	Grade	Length	PSI	SAX	Top Depth	Bottom Depth
There are no Liner records to display.								

**Total Depth: 9972**

Packer	
Depth	Brand & Type
There are no Packer records to display.	

Plug	
Depth	Plug Type
There are no Plug records to display.	

Initial Test Data										
Test Date	Formation	Oil BBL/Day	Oil-Gravity (API)	Gas MCF/Day	Gas-Oil Ratio Cu FT/BBL	Water BBL/Day	Pumpin or Flowing	Initial Shut-In Pressure	Choke Size	Flow Tubing Pressure
Jul 06, 2012	HUNTON			1240		7328	PUMPING			

Completion and Test Data by Producing Formation										
Formation Name: HUNTON			Code: 269HNTN			Class: GAS				
<b>Spacing Orders</b>				<b>Perforated Intervals</b>						
<b>Order No</b>		<b>Unit Size</b>		<b>From</b>			<b>To</b>			
594330		640		There are no Perf. Intervals records to display.						
<b>Acid Volumes</b>				<b>Fracture Treatments</b>						
There are no Acid Volume records to display.				There are no Fracture Treatments records to display.						

Formation	Top
OSWEGO	3606
VERDIGRIS	3745
PINK LIME	3939
INOLA	4082
BROWN LIME	4206
MISSISSIPPI	4486
WOODFORD	4574
HUNTON	4624
SYLVAN	4704

Were open hole logs run? Yes  
Date last log run: April 29, 2012

Were unusual drilling circumstances encountered? No  
Explanation:

Other Remarks
OCC - THIS WELL IS AN OPEN HOLE COMPLETION PRODUCING FROM TWO LATERALS. LATERAL #1 - OPEN FROM 5,238' TO 9,972', AND LATERAL #2 - OPEN FROM 5,458' TO 8,966', BOTH IN MEASURED DEPTH.

**Bottom Holes**

Sec: 30 TWP: 14N RGE: 5E County: LINCOLN

SE SW NE NE

1615 FSL 1962 FWL of 1/4 SEC

Depth of Deviation: 0 Radius of Turn: 0 Direction: 0 Total Length: 0

Measured Total Depth: 5195 True Vertical Depth: 4623 End Pt. Location From Release, Unit or Property Line: 0

**Lateral Holes**

Sec: 30 TWP: 14N RGE: 5E County: LINCOLN

NE NE SW SW

1058 FSL 1079 FWL of 1/4 SEC

Depth of Deviation: 5238 Radius of Turn: 62 Direction: 230 Total Length: 4734

Measured Total Depth: 9972 True Vertical Depth: 4735 End Pt. Location From Release, Unit or Property Line: 1058

Sec: 30 TWP: 14N RGE: 5E County: LINCOLN

SW NW SE SE

690 FSL 1482 FWL of 1/4 SEC

Depth of Deviation: 5458 Radius of Turn: 91 Direction: 179 Total Length: 3508

Measured Total Depth: 8966 True Vertical Depth: 4700 End Pt. Location From Release, Unit or Property Line: 690

**FOR COMMISSION USE ONLY**

1115398

Status: Accepted

API NO. 081-24100  
 OTC PROD. UNIT NO. 081-207896

PLEASE TYPE OR USE BLACK INK ON NOTE:  
 Attach copy of original 1002A if recompletion or reentry.

**AS SUBMITTED**

**RECEIVED**

Form 1002A Rev. 2009

JUL 12 2012

ORIGINAL  
 AMENDED (Reason)

Rule 165:10-3-25

**COMPLETION REPORT**

TYPE OF DRILLING OPERATION  
 STRAIGHT HOLE  DIRECTIONAL HOLE  HORIZONTAL HOLE  
 SERVICE WELL

SPUD DATE 04/20/2012  
 DRLG FINISHED DATE 05/19/2012

if directional or horizontal, see reverse for bottom hole location.  
 COUNTY LINCOLN SEC 29 TWP 14N RGE 05E  
 LEASE NAME PONTUS WELL NO. 1-30H

DATE OF WELL COMPLETION 06/27/2012  
 1st PROD DATE 06/27/2012

NW 1/4 NW 1/4 NW 1/4 NW 1/4 FSL OF 1/4 SEC 2418 FWL OF 1/4 SEC 187  
 ELEVATION N Derrick Ground 957 Latitude (if known) Longitude (if known)

RECOMP DATE

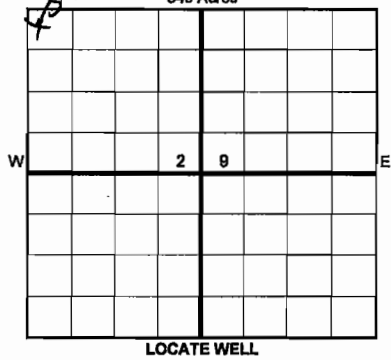
OPERATOR NAME EQUAL ENERGY US, INC OTC/OCC OPERATOR NO. 22671

ADDRESS 4801 GAILLARDIA PARKWAY - SUITE 325

CITY OKLAHOMA CITY STATE OK ZIP 73142

OKLAHOMA CORPORATION COMMISSION

840 Acres



**COMPLETION TYPE**  
 SINGLE ZONE  
 MULTIPLE ZONE  
 Application Date  
 COMMINGLED  
 Application Date  
 LOCATION EXCEPTION ORDER INCREASED DENSITY ORDER NO. 599329

**CASING & CEMENT (Form 1002C must be attached)**

TYPE	SIZE	WEIGHT	GRADE	FEET	PSI	SAX	TOP OF CMT	
CONDUCTOR								
SURFACE	9 5/8"	36#	J-55	633		175	SURFACE	
INTERMEDIATE	7"	26#	J-55	5,413		200	3781'	
PRODUCTION								
LINER								
							TOTAL DEPTH	9972'

PACKER @ BRAND & TYPE PLUG @ TYPE PLUG @ TYPE  
 PACKER @ BRAND & TYPE PLUG @ TYPE PLUG @ TYPE

**COMPLETION & TEST DATA BY PRODUCING FORMATION** *269 HUNTN*

FORMATION	SPACING & SPACING ORDER NUMBER	CLASS: Oil, Gas, Dry, Inj, Disp, Comm Disp, Svc	PERFORATED INTERVALS	ACID/VOLUME	FRACTURE TREATMENT (Fluids/Prop Amounts)
HUNTON	640 / 594330	GAS	<del>5238-9972 (OH)</del> <i>open hole</i> <del>5458-8966 (OH)</del>		

Min Gas Allowable (165:10-17-7) OR  Oil Allowable (165:10-13-3)  
 Gas Purchaser/Measurer SCISSORTAIL ENERGY  
 First Sales Date 6/27/2012

**INITIAL TEST DATA**

INITIAL TEST DATE	7/6/2012
OIL-BBL/DAY	0
OIL-GRAVITY (API)	NA
GAS-MCF/DAY	1240.3
GAS-OIL RATIO CU FT/BBL	NA
WATER-BBL/DAY	7328
PUMPING OR FLOWING	PUMPING
INITIAL SHUT-IN PRESSURE	
CHOKE SIZE	
FLOW TUBING PRESSURE	

A record of the formation drilled through, and pertinent remarks are presented on the reverse. I declare that I have knowledge of the contents of this report and am authorized by my organization to make this report, which was prepared by me or under my supervision and direction, with the data and facts stated herein to be true, correct, and complete to the best of my knowledge and belief.

SIGNATURE LORRI L. YOWELL DATE 7/9/2012 PHONE NUMBER 405-242-6086  
 ADDRESS P O BOX 420 CITY CARNEY STATE OK ZIP 74832 EMAIL ADDRESS lyowell@equalenergyus.ca

PLEASE TYPE OR USE BLACK INK ONLY  
FORMATION RECORD

Give formation names and tops, if available, or descriptions and thickness of formations drilled through. Show intervals cored or drillstem tested.

LEASE NAME PONTUS WELL NO. 1-30H

NAMES OF FORMATIONS	TOP
OSWEGO	3,606
VERDIGRIS	3,745
PINK LIME	3939
INOLA	4,082
BROWN LIME	4,206
MSSP	4,486
WOODFROD	4,574
HUNTON	4,624
SYLVAN	4,704
ALL TOPS ABOVE ARE TVD	

FOR COMMISSION USE ONLY

ITD on file  YES  NO

APPROVED \_\_\_\_\_ DISAPPROVED \_\_\_\_\_

2) Reject Codes \_\_\_\_\_

\_\_\_\_\_

\_\_\_\_\_

\_\_\_\_\_

Were open hole logs run?  yes  no

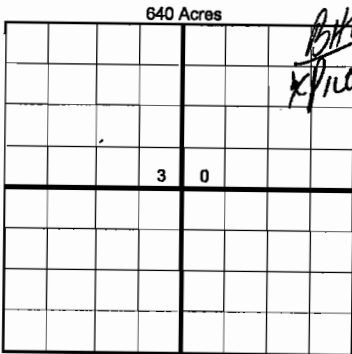
Date Last log was run 4/29/2012

Was CO<sub>2</sub> encountered?  yes  no at what depths? \_\_\_\_\_

Was H<sub>2</sub>S encountered?  yes  no at what depths? \_\_\_\_\_

Were unusual drilling circumstances encountered?  yes  no  
If yes, briefly explain below \_\_\_\_\_

Other remarks: OCC - This well is an open hole completion producing from 2 laterals. Lateral #1 open from 5238' to 9972' and Lateral #2 open from 5458' to 8966', both in measured depth



BOTTOM HOLE LOCATION FOR DIRECTIONAL HOLE

SEC 30	TWP 14N	RGE 05E	COUNTY LINCOLN
Spot Location SE 1/4 SW 1/4 NE 1/4 NE 1/4		Feet From 1/4 Sec Lines	FSL 1615 FWL 1962
Measured Total Depth	5195	True Vertical Depth	4623
BHL From Lease, Unit, or Property Line:			

BOTTOM HOLE LOCATION FOR HORIZONTAL HOLE: (LATERALS)

LATERAL #1

SEC 30	TWP 14N	RGE 05E	COUNTY LINCOLN
Spot Location NE 1/4 NE 1/4 SW 1/4 SW 1/4		Feet From 1/4 Sec Lines	FSL 1058 FWL 1079
Depth of Deviation	5,238	Radius of Turn	62.3
Direction	230.6	Total Length	4,734
Measured Total Depth	9,972	True Vertical Depth	4,735
BHL From Lease, Unit, or Property Line: 1058			

LATERAL #2

SEC 30	TWP 14N	RGE 05E	COUNTY LINCOLN
Spot Location SW 1/4 NW 1/4 SE 1/4 SE 1/4		Feet From 1/4 Sec Lines	FSL 690 FWL 1482
Depth of Deviation	5458	Radius of Turn	91.5
Direction	179.8	Total Length	3508
Measured Total Depth	8966	True Vertical Depth	4700
BHL From Lease, Unit, or Property Line: 690			

LATERAL #3

SEC	TWP	RGE	COUNTY
Spot Location 1/4 1/4 1/4 1/4		Feet From 1/4 Sec Lines	FSL FWL
Depth of Deviation	Radius of Turn	Direction	Total Length
Measured Total Depth	True Vertical Depth	BHL From Lease, Unit, or Property Line:	

If more than three drainholes are proposed, attach a separate sheet indicating the necessary information.

Direction must be stated in degrees azimuth. Please note, the horizontal drainhole and its end point must be located within the boundaries of the lease or spacing unit.

Directional surveys are required for all drainholes and directional wells.

