

Oklahoma Corporation Commission
Oil & Gas Conservation Division
Post Office Box 52000
Oklahoma City, Oklahoma 73152-2000
Rule 165: 10-3-25

Form 1002A

API No.: 35151235900000

Completion Report

Spud Date: December 31, 2011

OTC Prod. Unit No.: 151-207690

Drilling Finished Date: January 27, 2012

1st Prod Date: January 27, 2012

Completion Date: February 21, 2012

Drill Type: HORIZONTAL HOLE

Min Gas Allowable: Yes

Well Name: LITTLE 24-28-17 1H

Purchaser/Measurer: CHESAPEAKE OPERATING INC

Location: WOODS 24 28N 17W
SE SW SW SE
200 FSL 2130 FEL of 1/4 SEC
Derrick Elevation: 1984 Ground Elevation: 1968

First Sales Date:

Operator: CHESAPEAKE OPERATING INC 17441
P.O. Box 18496
6100 N WESTERN AVE
OKLAHOMA CITY, OK 73154-0496

Completion Type	
X	Single Zone
	Multiple Zone
	Commingled

Location Exception
Order No
596887

Increased Density
Order No
There are no Increased Density records to display.

Casing and Cement							
Type	Size	Weight	Grade	Feet	PSI	SAX	Top of CMT
SURFACE	13 3/8	48	J-55	635		715	SURFACE
INTERMEDIATE	9 5/8	36	J-55	1507		570	SURFACE
INTERMEDIATE	7	26	P-110EC	6050		200	4456

Liner								
Type	Size	Weight	Grade	Length	PSI	SAX	Top Depth	Bottom Depth
LINER	4 1/2	13.5	P-110EC	5142	0	585	5325	

Total Depth: 10467

Packer	
Depth	Brand & Type
5283	BAKER R

Plug	
Depth	Plug Type
10378	PBTD

Initial Test Data										
Test Date	Formation	Oil BBL/Day	Oil-Gravity (API)	Gas MCF/Day	Gas-Oil Ratio Cu FT/BBL	Water BBL/Day	Pumpin or Flowing	Initial Shut-In Pressure	Choke Size	Flow Tubing Pressure
May 25, 2012	MISSISSIPPIAN	73		1892	25918	1435	PUMPING		ARTIFIC	

Completion and Test Data by Producing Formation										
Formation Name: MISSISSIPPIAN			Code: 359MSSP			Class: GAS				
Spacing Orders				Perforated Intervals						
Order No		Unit Size		From			To			
591584		640		5895			10359			
Acid Volumes				Fracture Treatments						
32,500 GALLONS ACID				1,610,539 POUNDS PROPPANT, 35.962 BARRELS FLUID						

Formation	Top
MISSISSIPPIAN	0

Were open hole logs run? Yes
Date last log run: January 24, 2012

Were unusual drilling circumstances encountered? No
Explanation:

Other Remarks
There are no Other Remarks.

Lateral Holes
Sec: 24 TWP: 28N RGE: 17W County: WOODS NE NW NW NE 67 FNL 2127 FEL of 1/4 SEC Depth of Deviation: 5356 Radius of Turn: -368 Direction: 360 Total Length: 4680 Measured Total Depth: 10467 True Vertical Depth: 4988 End Pt. Location From Release, Unit or Property Line: 67

FOR COMMISSION USE ONLY
Status: Accepted
1115221

PLEASE TYPE OR USE BLACK INK
NOTE:
Attach copy of original 1002A if recon

AS SUBMITTED

MISSION 636704
ion RECEIVED

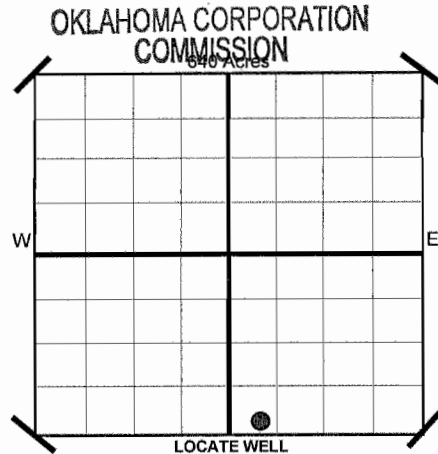
JUN 22 2012

151-23590
PROD.
NO. 151-207690

ORIGINAL
AMENDED
Reason Amended
TYPE OF DRILLING OPERATION
STRAIGHT HOLE DIRECTIONAL HOLE HORIZONTAL HOLE
SERVICE WELL
Sectional or horizontal, see reverse for bottom hole location.

COMPLETION REPORT

NTY WOODS SEC 24 TWP 28N RGE 17W
SE
E LITTLE 24-28-17 WELL NO 1H
1/4 SW 1/4 SW 1/4 SE 1/4 FSL 200 FEL OF 1/4 SEC 2130
LOCATION
Section 1984 Ground 1968
OPERATOR CHESAPEAKE OPERATING, INC. OTC/OCC OPERATOR NO. 17441
ADDRESS P.O. BOX 18496
OKLAHOMA CITY STATE OK ZIP 73154



PLETION TYPE
SINGLE ZONE
MULTIPLE ZONE
Application Date
COMMINGLED
Application Date
PLETION ORDER NO. 596887
INCREASED DENSITY
SER NO.

CASING & CEMENT (Form 1002C must be attached)

TYPE	SIZE	WEIGHT	GRADE	FEET	PSI	SAX	TOP
CONDUCTOR							
SURFACE	13 3/8	48#	J-55	635		715 1115	SURFAC
INTERMEDIATE	9 5/8	36#	J-55	1507		570	SURFAC
INTERMEDIATE	7	26#	P-110EC	6050		200	4,456
LINER	4 1/2	13.5#	P-110EC	5325-10467		585	5360

PLUG @ 5283' BRAND & TYPE Baker R PLUG @ 10,378 TYPE PBDT PLUG @ _____ TYPE _____ TOTAL DEPTH 10,467
PLUG @ _____ BRAND & TYPE _____ PLUG @ _____ TYPE _____ PLUG @ _____ TYPE _____

PLETION & TEST DATA BY PRODUCING FORMATION

359 MSSP

FORMATION	SPACING & SPACING	WELL NUMBER	TEST: Oil, Gas, Dry, Inj.	PERFORATED	VOLUME	STURTURE TREATMENT
MISSISSIPPIAN	640	591584	GAS	5895-10359	32,500 gal acid	1,610,539 lbs proppant 35962 bbls fluid

Minimum Gas Allowable (165:10-17-7) Gas Purchaser/Measurer Chesapeake Operating, Inc
 OR 1st Sales Date

AL TEST DATA

AL TEST DATE	5/25/2012
IBL/DAY	73
GRAVITY (API)	
MCF/DAY	1,892
OIL RATIO CU FT/BBL	25,918
PER-BBL/DAY	1435
PUMPING OR FLOWING	PUMPING
MAX SHUT-IN PRESSURE	
WEIR SIZE	artificial lift
WELL TUBING PRESSURE	

Third of the formations drilled through, and pertinent remarks are presented on the reverse. I declare that I have knowledge of the contents of this report and am authorized by my organization to make this report which was prepared by me or under my supervision and direction, with the data and facts stated herein to be true, correct, and complete to the best of my knowledge and belief.

SIGNATURE: *David Craycraft* DAVID CRAYCRAFT - DISTRICT MANAGER 6/15/2012 405-848-8000
ADDRESS: P.O. BOX 18496 OKLAHOMA CITY OK 73154 EMAIL ADDRESS: ARIANNA.BEDELL@chk.com

PLEASE TYPE OR USE BLACK INK ONLY
FORMATION RECORD

formation names and tops, if available, or descriptions and thickness of formations and through. Show intervals cored or drillstem tested.

LEASE NAME LITTLE 24-28-17

WELL NO. 1H

LIST OF FORMATIONS	TOP
MISSISSIPPIAN	

FOR COMMISSION USE ONLY

ITD on file YES NO

APPROVED _____ DISAPPROVED _____

2) Reject Codes

Were open hole logs run? yes no

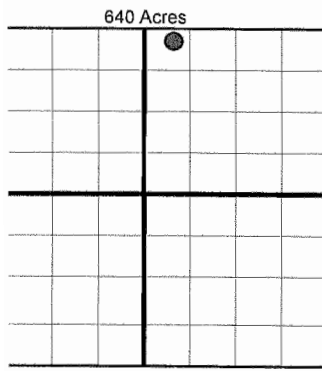
Date Last log was run 1/24/2012

Was CO₂ encountered? yes no at what depths?

Was H₂S encountered? yes no at what depths?

Were unusual drilling circumstances encountered? yes no
If yes, briefly explain.

Remarks:



BOTTOM HOLE LOCATION FOR DIRECTIONAL HOLE

SEC	TWP	RGE	COUNTY				
Spot Location	1/4	1/4	1/4	1/4	Feet From 1/4 Sec Lines	FSL	FWL
Measured Total Depth	True Vertical Depth		BHL From Lease, Unit, or Property Line:				

BOTTOM HOLE LOCATION FOR HORIZONTAL HOLE: (LATERALS)

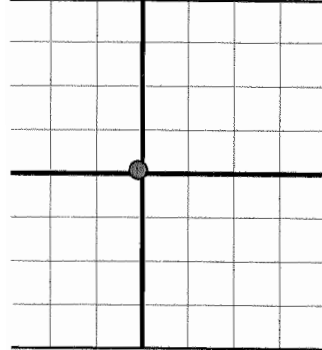
LATERAL #1

SEC	TWP	RGE	COUNTY				
24	28N	17W	WOODS				
Spot Location	NE 1/4	NW 1/4	NW 1/4	NE 1/4	Feet From 1/4 Sec Lines	FNL 67	FEL 2127
Depth of Deviation	5356	Radius of Turn	-368	Direction	360	Total Length	4680
Measured Total Depth	True Vertical Depth		BHL From Lease, Unit, or Property Line:				
10,467	4,988		67				

If more than three drainholes are proposed, attach a site sheet indicating the necessary information.

Direction must be stated in degrees azimuth.
Note, the horizontal drainhole and its end must be located within the boundaries of the acre spacing unit.

Directional surveys are required for all holes and directional wells.



LATERAL #2

SEC	TWP	RGE	COUNTY				
Spot Location	1/4	1/4	1/4	1/4	Feet From 1/4 Sec Lines	FSL	FWL
Depth of Deviation	Radius of Turn		Direction		Total Length		
Measured Total Depth	True Vertical Depth		BHL From Lease, Unit, or Property Line:				

LATERAL #3

SEC	TWP	RGE	COUNTY				
Spot Location	1/4	1/4	1/4	1/4	Feet From 1/4 Sec Lines	FSL	FWL
Depth of Deviation	Radius of Turn		Direction		Total Length		
Measured Total Depth	True Vertical Depth		BHL From Lease, Unit, or Property Line:				

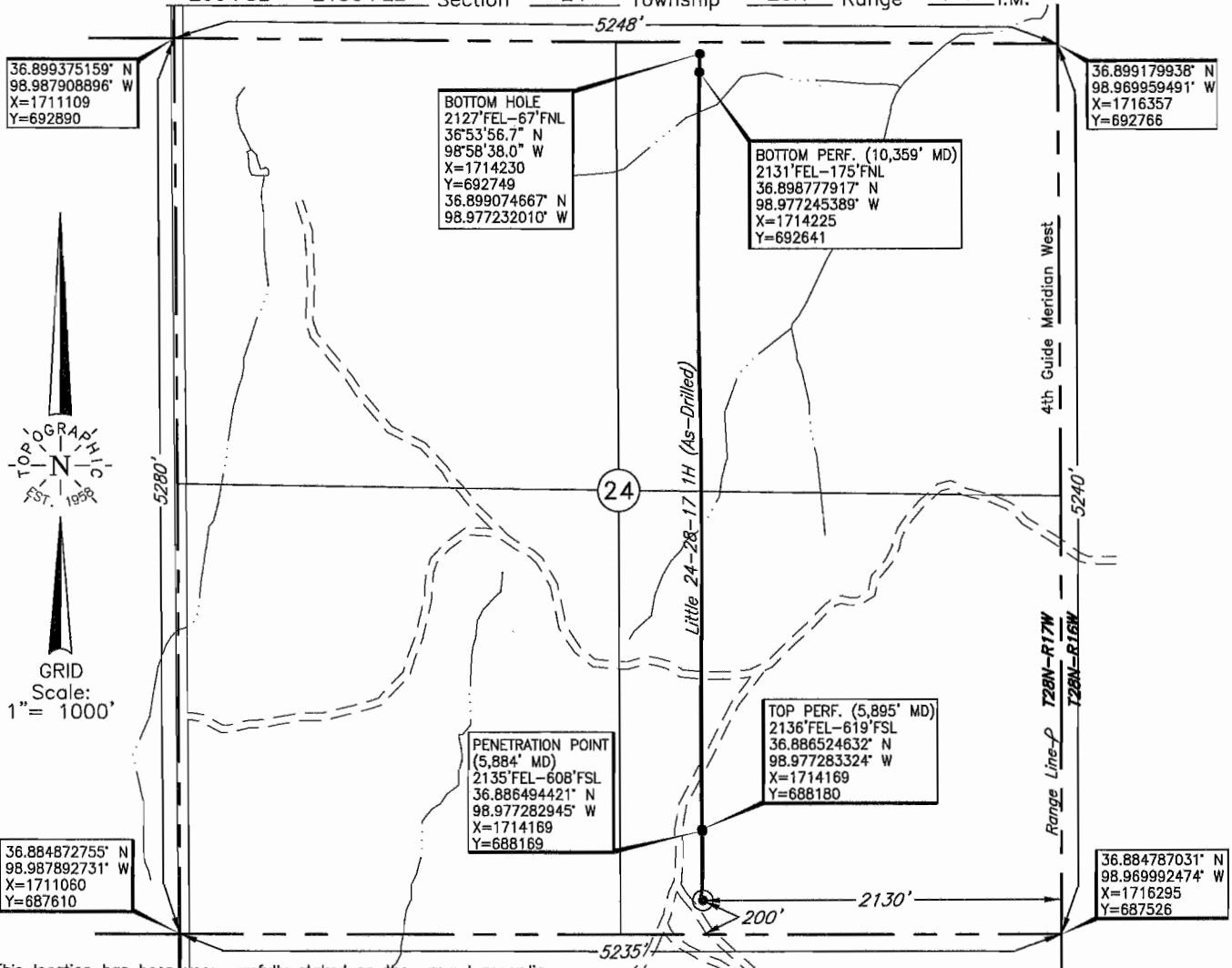
Image @ 1002A

TOPOGRAPHIC LAND SURVEYORS OF OKLAHOMA

6709 NORTH CLASSEN BLVD., OKLA. CITY, OKLA. 73116 * LOCAL (405) 843-4847 * OUT OF STATE (800) 654-3219
Certificate of Authorization No. 1293

WOODS County, Oklahoma

200'FSL - 2130'FEL Section 24 Township 28N Range 17W I.M.



This location has been very carefully staked on the ground according to the best official survey records, maps, and photographs available to us, but its accuracy is not guaranteed. Review this plat and notify us immediately of any possible discrepancy.

Operator: CHESAPEAKE OPERATING, INC.

Lease Name: LITTLE 24-28-17

Well No.: 1H

ELEVATION:
1968' Gr. at Stake

Topography & Vegetation Loc. fell in rough sloped pasture, ±75' East of field trail

Good Drill Site? Yes Reference Stakes or Alternate Location Stakes Set None

Best Accessibility to Location From NW

Distance & Direction from Hwy Jct or Town From Camp Houston, Ok., go 7.5 miles East on US. Hwy. 64, then 5.9 miles North to the SW Cor. Sec. 24, then travel ±1 mile East thru Sec. 24 on field trail to the SE Cor. of Sec. 24-T28N-R17W

GPS
DATUM: NAD-27
LAT: 36°53'07.3"N
LONG: 98°58'38.2"W
LAT: 36.885373855
LONG: 98.977272323

180901 Date of Drawing: Mar. 23, 2012
Invoice # 173564 Date Staked: Oct. 31, 2011 JP

FINAL AS-DRILLED PLAT

AS-DRILLED INFORMATION
FURNISHED BY CHESAPEAKE OPERATING

STATE PLANE
COORDINATES:
ZONE: OK NORTH
X: 1714168
Y: 687761