

Oklahoma Corporation Commission
Oil & Gas Conservation Division
Post Office Box 52000
Oklahoma City, Oklahoma 73152-2000
Rule 165: 10-3-25

Form 1002A

API No.: 35081240720001

Completion Report

Spud Date: March 26, 2011

OTC Prod. Unit No.: 081-205403

Drilling Finished Date: May 01, 2011

Amended

1st Prod Date: May 11, 2011

Amend Reason: RE-ENTRY (THIRD LATERAL)

Completion Date: May 11, 2011

Recomplete Date: July 29, 2011

Drill Type: HORIZONTAL HOLE
DIRECTIONAL HOLE

Min Gas Allowable: Yes

Well Name: ADONIS 1-22H

Purchaser/Measurer: SCISSORTAIL ENERGY

Location: LINCOLN 21 14N 5E
NE SE SE SE
363 FSL 2387 FWL of 1/4 SEC
Derrick Elevation: 0 Ground Elevation: 922

First Sales Date: 05/11/2011

Operator: EQUAL ENERGY US INC 22671

4801 GAILLARDIA PKWY STE 325
OKLAHOMA CITY, OK 73142-1920

Completion Type	
X	Single Zone
	Multiple Zone
	Commingled

Location Exception	
Order No	
	589362
	586623

Increased Density	
Order No	
There are no Increased Density records to display.	

Casing and Cement							
Type	Size	Weight	Grade	Feet	PSI	SAX	Top of CMT
SURFACE	9 5/8	36	J-55	600		270	SURFACE
PRODUCTION	7	26	J-55	5439		230	3837

Liner								
Type	Size	Weight	Grade	Length	PSI	SAX	Top Depth	Bottom Depth
There are no Liner records to display.								

Total Depth: 9370

Packer	
Depth	Brand & Type
There are no Packer records to display.	

Plug	
Depth	Plug Type
There are no Plug records to display.	

Initial Test Data										
Test Date	Formation	Oil BBL/Day	Oil-Gravity (API)	Gas MCF/Day	Gas-Oil Ratio Cu FT/BBL	Water BBL/Day	Pumpin or Flowing	Initial Shut-In Pressure	Choke Size	Flow Tubing Pressure
Jun 05, 2011	HUNTON			322		2295	PUMPING	140		

Completion and Test Data by Producing Formation										
Formation Name: HUNTON			Code: 269HNTN			Class: GAS				
Spacing Orders				Perforated Intervals						
Order No		Unit Size		From			To			
574732		640		5153			8844			
Acid Volumes				Fracture Treatments						
There are no Acid Volume records to display.				There are no Fracture Treatments records to display.						

Formation	Top
OSWEGO	3508
VERDIGRIS	3640
PINK LIME	3846
INOLA	3986
BROWN LIME	4136
MISSISSIPPI LIME	4516
WOODFORD	4582
HUNTON	4614
SYLVAN	4694

Were open hole logs run? Yes

Date last log run: April 05, 2011

Were unusual drilling circumstances encountered? No

Explanation:

Other Remarks
There are no Other Remarks.

Bottom Holes

Sec: 22 TWP: 14N RGE: 5E County: LINCOLN

SW NE SW SW

970 FSL 975 FWL of 1/4 SEC

Depth of Deviation: 0 Radius of Turn: 0 Direction: 0 Total Length: 0

Measured Total Depth: 5431 True Vertical Depth: 4776 End Pt. Location From Release, Unit or Property Line: 970

Lateral Holes

Sec: 22 TWP: 14N RGE: 5E County: LINCOLN

SW NW NE SE

2213 FSL 1450 FWL of 1/4 SEC

Depth of Deviation: 5121 Radius of Turn: 1099 Direction: 71 Total Length: 3534

Measured Total Depth: 8758 True Vertical Depth: 4650 End Pt. Location From Release, Unit or Property Line: 1190

Sec: 22 TWP: 14N RGE: 5E County: LINCOLN

SE SE NE NW

1554 FSL 2338 FWL of 1/4 SEC

Depth of Deviation: 5312 Radius of Turn: 1105 Direction: 21 Total Length: 3500

Measured Total Depth: 8904 True Vertical Depth: 4637 End Pt. Location From Release, Unit or Property Line: 1086

Sec: 22 TWP: 14N RGE: 5E County: LINCOLN

NE NW NE SE

2591 FSL 1950 FWL of 1/4 SEC

Depth of Deviation: 5244 Radius of Turn: 1217 Direction: 69 Total Length: 4066

Measured Total Depth: 9370 True Vertical Depth: 4702 End Pt. Location From Release, Unit or Property Line: 690

FOR COMMISSION USE ONLY

1112723

Status: Accepted

RECEIVED

Form 1002A Rev. 2009

NOV 22 2011

OKLAHOMA CORPORATION COMMISSION

AS SUBMITTED

API NO. 081-24072
OTC PROD. UNIT NO. 081-205403

PLEASE TYPE OR USE... Attach copy of original if recompleting...

ORIGINAL AMENDED (Reason)

COMPLETION REPORT

TYPE OF DRILLING OPERATION: STRAIGHT HOLE, DIRECTIONAL HOLE, HORIZONTAL HOLE, SERVICE WELL

SPUD DATE 03-26-2011, DRLG FINISHED DATE 05-01-2011, DATE OF WELL COMPLETION 05-11-2011

COUNTY LINCOLN, SEC 21, TWP 14N, RGE 5E, LEASE NAME ADONIS, WELL NO. 1-22H

1st PROD DATE 05-11-2011, RECOMP DATE

ELEVATION 922', FSL OF 1/4 SEC 363, FWL OF 1/4 SEC 2387

Longitude (if known)

OPERATOR NAME EQUAL ENERGY US, INC

OTC/OCC OPERATOR NO. 22671

ADDRESS 4801 GAILLARDIA PARKWAY - SUITE 325

CITY OKLAHOMA CITY, STATE OK, ZIP 73142

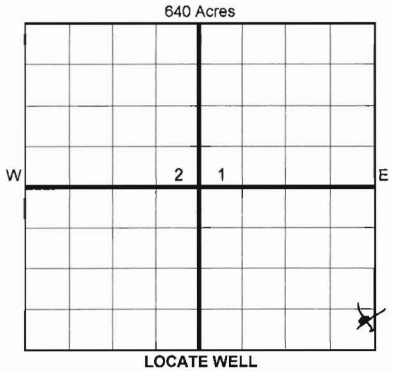


Table with 2 columns: Completion Type (Single Zone, Multiple Zone, etc.) and Location Exception Order (583453, N/A)

Table with 9 columns: Type, Size, Weight, Grade, Feet, PSI, SAX, Top of CMT. Rows include Conductor, Surface, Intermediate, Production, Liner.

PACKER @ BRAND & TYPE PLUG @ TYPE PLUG @ TYPE TOTAL DEPTH 8844 8904

Table with 2 columns: Formation (HUNTON) and Spacing & Spacing Order Number (574732 (640)). Includes perforated intervals and fracture treatment data.

Min Gas Allowable (165:10-17-7) OR Oil Allowable (165:10-13-3) Gas Purchaser/Measurer SCISSORTAIL ENERGY First Sales Date 5/11/2011

Table with 2 columns: Initial Test Data (Date: 6/5/2011, Oil-BBL/DAY: 0, GAS-MCF/DAY: 322.2, etc.)

A record of the formations drilled through, and pertinent remarks are presented on the reverse. I declare that I have knowledge of the contents of this report and am authorized by my organization to make this report... LORRI L. YOWELL SIGNATURE, NAME (PRINT OR TYPE), DATE 11/14/2011, PHONE NUMBER 405-242-6086, ADDRESS P O BOX 420, CITY CARNEY, STATE OK, ZIP 74832, EMAIL ADDRESS lyowell@equalenergyus.ca

PLEASE TYPE OR USE BLACK INK ONLY
FORMATION RECORD

Give formation names and tops, if available, or descriptions and thickness of formations drilled through. Show intervals cored or drillstem tested.

LEASE NAME ADONIS WELL NO. 1-22H

NAMES OF FORMATIONS	TOP
Oswego	3,508
Verdigris	3,640
Pink Lime	3846
Inola	3,986
Brown Lime	4,136
Mississippi Lime	4,516
Woodford	4,582
Hunton	4,614
Sylvan	4,694

FOR COMMISSION USE ONLY

ITD on file YES NO

APPROVED _____ DISAPPROVED _____

2) Reject Codes _____

Were open hole logs run? yes no

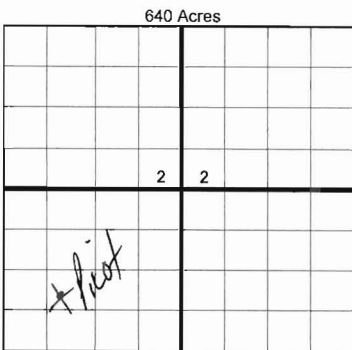
Date Last log was run 4/5/2011

Was CO₂ encountered? yes no at what depths? _____

Was H₂S encountered? yes no at what depths? _____

Were unusual drilling circumstances encountered? yes no
If yes, briefly explain below

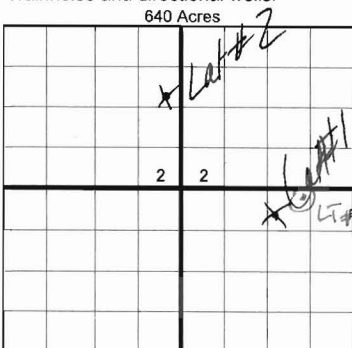
Other remarks:



If more than three drainholes are proposed, attach a separate sheet indicating the necessary information.

Direction must be stated in degrees azimuth. Please note, the horizontal drainhole and its end point must be located within the boundaries of the lease or spacing unit.

Directional surveys are required for all drainholes and directional wells.



BOTTOM HOLE LOCATION FOR DIRECTIONAL HOLE

Pilot

SEC	TWP	RGE	COUNTY
22	14N	05E	LINCOLN
Spot Location		Feet From 1/4 Sec Lines	
SW 1/4	NE 1/4	SW 1/4	SW 1/4
Measured Total Depth		True Vertical Depth	BHL From Lease, Unit, or Property Line:
5431		4776	FSL 947' FWL 932'

BOTTOM HOLE LOCATION FOR HORIZONTAL HOLE: (LATERALS)

LATERAL #1

SEC	TWP	RGE	COUNTY
22	14N	05E	LINCOLN
Spot Location		Feet From 1/4 Sec Lines	
SW 1/4	NW 1/4	NE 1/4	SE 1/4
Depth of Deviation	Radius of Turn	Direction	Total Length
5,121	1099.7	71.4	3,534
Measured Total Depth	True Vertical Depth	BHL From Lease, Unit, or Property Line:	
8,055 8758	4,651		

LATERAL #2

SEC	TWP	RGE	COUNTY
22	14N	05E	LINCOLN
Spot Location		Feet From 1/4 Sec Lines	
SE 1/4	SE 1/4	NE 1/4	NW 1/4
Depth of Deviation	Radius of Turn	Direction	Total Length
5312	1105.5	21.8	3500
Measured Total Depth	True Vertical Depth	BHL From Lease, Unit, or Property Line:	
8844 8904	4637		

LATERAL #3

SEC	TWP	RGE	COUNTY
22	14N	05E	LINCOLN
Spot Location		Feet From 1/4 Sec Lines	
1/4	1/4	1/4	1/4
Depth of Deviation	Radius of Turn	Direction	Total Length
9370	4702		2612
Measured Total Depth	True Vertical Depth	BHL From Lease, Unit, or Property Line:	
9370	4702	2612, 690	

API NO. 081-24072
 OTC PROD. UNIT NO. 081-205403

PLEASE TYPE OR USE BLACK INK ONLY
 NOTE:

Attach copy of original 1002A
 if recompletion or reentry.

OKLAHOMA CORPORATION COMMISSION
 Oil & Gas Conservation Division
 Post Office Box 52000
 Oklahoma City, Oklahoma 73152-2000
 Rule 165:10-3-25

RECEIVED

Form 1002A
 Rev. 2009

NOV 22 2011

OKLAHOMA CORPORATION
 COMMISSION
 640 Acres

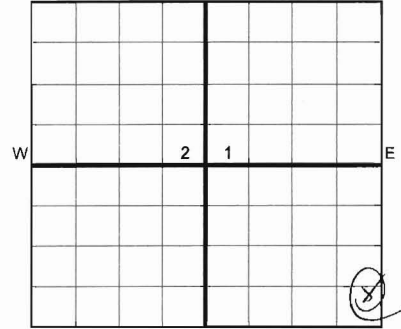
ORIGINAL
 AMENDED (Reason) Re-Entry (3rd Lateral)

COMPLETION REPORT

TYPE OF DRILLING OPERATION
 STRAIGHT HOLE DIRECTIONAL HOLE HORIZONTAL HOLE
 SERVICE WELL
 If directional or horizontal, see reverse for bottom hole location.

SPUD DATE 03-26-2011
 DRLG FINISHED DATE 05-01-2011
 DATE OF WELL COMPLETION 05-11-2011
 1st PROD DATE 05-11-2011
 Re-Entry Comp. 07-29-2011

COUNTY LINCOLN SEC 21 TWP 14N RGE 5E
 LEASE NAME ADONIS WELL NO. 1-22H
 NE 1/4 SE 1/4 SE 1/4 SE 1/4 FSL OF 1/4 SEC 363 FWL OF 1/4 SEC 2387
 ELEVATION N Derrick Ground 922' Latitude (if known) Longitude (if known)
 OPERATOR NAME EQUAL ENERGY US, INC OTC/OCC OPERATOR NO. 22671
 ADDRESS 4801 GAILLARDIA PARKWAY - SUITE 325
 CITY OKLAHOMA CITY STATE OK ZIP 73142



LOCATE WELL

COMPLETION TYPE
 SINGLE ZONE
 MULTIPLE ZONE
 COMMINGLED
 LOCATION 589362 (final)
 EXCEPTION ORDER INCREASED DENSITY ORDER NO. N/A

CASING & CEMENT (Form 1002C must be attached)							
TYPE	SIZE	WEIGHT	GRADE	FEET	PSI	SAX	TOP OF CMT
CONDUCTOR							
SURFACE	9 5/8"	36#	J-55	600		270	SURFACE
INTERMEDIATE							
PRODUCTION	7"	26#	J-55	5439		230	3837
LINER							

PACKER @ _____ BRAND & TYPE _____ PLUG @ _____ TYPE _____ PLUG @ _____ TYPE _____ TOTAL DEPTH 8,844
 PACKER @ _____ BRAND & TYPE _____ PLUG @ _____ TYPE _____ PLUG @ _____ TYPE _____ 9370

COMPLETION & TEST DATA BY PRODUCING FORMATION 269 HNTN

FORMATION	SPACING & SPACING ORDER NUMBER	CLASS: Oil, Gas, Dry, Inj, Disp, Comm Disp, Svc	PERFORATED INTERVALS	ACID/VOLUME	FRACTURE TREATMENT (Fluids/Prop Amounts)
HUNTON	574732 (640)	GAS	5153-8655 5312-8844		

Min Gas Allowable (165:10-17-7) OR Oil Allowable (165:10-13-3)
 Gas Purchaser/Measurer SCISSORTAIL ENERGY
 First Sales Date 5/11/2011

INITIAL TEST DATA	INITIAL TEST DATE	OIL-BBL/DAY	OIL-GRAVITY (API)	GAS-MCF/DAY	GAS-OIL RATIO CU FT/BBL	WATER-BBL/DAY	PUMPING OR FLOWING	INITIAL SHUT-IN PRESSURE	CHOKE SIZE	FLOW TUBING PRESSURE
	6/5/2011	0	N/A	322.2		2295	PUMPING	140		

A record of the formations drilled through, and pertinent remarks are presented on the reverse. I declare that I have knowledge of the contents of this report and am authorized by my organization to make this report, which was prepared by me or under my supervision and direction, with the data and facts stated herein to be true, correct, and complete to the best of my knowledge and belief.

SIGNATURE: LORRI L. YOWELL NAME (PRINT OR TYPE)
 ADDRESS: P O BOX 420 CITY: CARNEY STATE: OK ZIP: 74832
 DATE: 11-18-2011 PHONE NUMBER: 405-242-6086
 EMAIL ADDRESS: lyowell@equalenergyus.com

PLEASE TYPE OR USE BLACK INK ONLY
FORMATION RECORD

Give formation names and tops, if available, or descriptions and thickness of formations drilled through. Show intervals cored or drillstem tested.

LEASE NAME ADONIS WELL NO. 1-22H

NAMES OF FORMATIONS	TOP
Oswego	3,508
Verdigris	3,640
Pink Lime	3846
Inola	3,986
Brown Lime	4,136
Mississippi Lime	4,516
Woodford	4,582
Hunton	4,614
Sylvan	4,694

FOR COMMISSION USE ONLY

ITD on file YES NO

APPROVED _____ DISAPPROVED _____

2) Reject Codes

Were open hole logs run? yes no

Date Last log was run 4/5/2011

Was CO₂ encountered? yes no at what depths? _____

Was H₂S encountered? yes no at what depths? _____

Were unusual drilling circumstances encountered? yes no
If yes, briefly explain below _____

Other remarks:

640 Acres

If more than three drainholes are proposed, attach a separate sheet indicating the necessary information.

Direction must be stated in degrees azimuth.
Please note, the horizontal drainhole and its end point must be located within the boundaries of the lease or spacing unit.

Directional surveys are required for all drainholes and directional wells.

640 Acres

BOTTOM HOLE LOCATION FOR DIRECTIONAL HOLE *PILOT*

SEC	22	TWP	14N	RGE	05E	COUNTY	LINCOLN		
Spot Location		SW 1/4	NE 1/4	SW 1/4	SW 1/4	Feet From 1/4 Sec Lines	FSL 947'	FWL 932'	
Measured Total Depth		5431			True Vertical Depth	4776			
BHL From Lease, Unit, or Property Line:									

BOTTOM HOLE LOCATION FOR HORIZONTAL HOLE: (LATERALS)

LATERAL #1

SEC	22	TWP	14N	RGE	05E	COUNTY	LINCOLN		
Spot Location		SW 1/4	NW 1/4	NE 1/4	SE 1/4	Feet From 1/4 Sec Lines	FSL 2180	FWL 1352	
Depth of Deviation		5,121		Radius of Turn	1099.7	Direction	71.4	Total Length	3,534
Measured Total Depth		8,655			True Vertical Depth	4,651			
BHL From Lease, Unit, or Property Line:									

LATERAL #2

SEC	22	TWP	14N	RGE	05E	COUNTY	LINCOLN		
Spot Location		SE 1/4	SE 1/4	NE 1/4	NW 1/4	Feet From 1/4 Sec Lines	FSL 1498	FWL 2338	
Depth of Deviation		5312		Radius of Turn	1105.5	Direction	21.8	Total Length	3500
Measured Total Depth		8844			True Vertical Depth	4637			
BHL From Lease, Unit, or Property Line:									

LATERAL #3

SEC	22	TWP	14N	RGE	05E	COUNTY	LINCOLN		
Spot Location		NE 1/4	NW 1/4	NE 1/4	SE 1/4	Feet From 1/4 Sec Lines	FSL 2591	FWL 1894	
Depth of Deviation		5244		Radius of Turn	1217	Direction	69.6	Total Length	4066
Measured Total Depth		9310 9370			True Vertical Depth	4702			
BHL From Lease, Unit, or Property Line:									