

Oklahoma Corporation Commission  
Oil & Gas Conservation Division  
Post Office Box 52000  
Oklahoma City, Oklahoma 73152-2000  
Rule 165: 10-3-25

Form 1002A

API No.: 35151234640000

**Completion Report**

Spud Date: February 04, 2011

OTC Prod. Unit No.:

Drilling Finished Date: March 09, 2011

1st Prod Date: March 27, 2011

Completion Date: March 23, 2011

**Drill Type: HORIZONTAL HOLE**

Min Gas Allowable: Yes

Well Name: LOHMANN 1H-8

Purchaser/Measurer: SEMGAS

Location: WOODS 8 26N 13W  
S2 S2 SW SE  
140 FSL 660 FWL of 1/4 SEC  
Derrick Elevation: 0 Ground Elevation: 1434

First Sales Date: 03/27/2011

Operator: EAGLE ENERGY PRODUCTION LLC 22583

9 E 4TH ST STE 200  
TULSA, OK 74103-5108

Completion Type	
X	Single Zone
	Multiple Zone
	Commingled

Location Exception
Order No
There are no Location Exception records to display.

Increased Density
Order No
There are no Increased Density records to display.

Casing and Cement							
Type	Size	Weight	Grade	Feet	PSI	SAX	Top of CMT
SURFACE	9.625	40	J-55	1012		590	SURFACE
INTERMEDIATE	7	26	N-80	6301		255	4106

Liner								
Type	Size	Weight	Grade	Length	PSI	SAX	Top Depth	Bottom Depth
LINER	4.5	11.6	N-80	3884	0	340	5966	9850

**Total Depth: 9850**

Packer	
Depth	Brand & Type
There are no Packer records to display.	

Plug	
Depth	Plug Type
There are no Plug records to display.	

Initial Test Data										
Test Date	Formation	Oil BBL/Day	Oil-Gravity (API)	Gas MCF/Day	Gas-Oil Ratio Cu FT/BBL	Water BBL/Day	Pumpin or Flowing	Initial Shut-In Pressure	Choke Size	Flow Tubing Pressure
Apr 10, 2011	MISSISSIPPIAN	306	32	2895	9461	4905	PUMPING	630	64/64	

Completion and Test Data by Producing Formation			
Formation Name: MISSISSIPPIAN	Code: 359MSSP	Class: OIL	
<b>Spacing Orders</b>		<b>Perforated Intervals</b>	
<b>Order No</b>	<b>Unit Size</b>	<b>From</b>	<b>To</b>
581897	640	6300	6794
<b>Acid Volumes</b>		<b>Fracture Treatments</b>	
4,000 BARRELS 15% HCL		1,097 BARRELS SLICKWATER, 140,000 POUNDS 30/50 SAND	

Formation	Top
HEEBNER	4382
HASKELL	4720
TONKAWA	4777
AVANT	5075
COTTAGE GROVE	5128
HOGSHOOTER LIME	5231
CHECKERBOARD	5253
OSWEGO	5399
CHEROKEE	5520
VERDIGRIS	5556
RED FORK	5639
MISSISSIPPI	5704

Were open hole logs run? No

Date last log run:

Were unusual drilling circumstances encountered? No

Explanation:

Other Remarks
There are no Other Remarks.

**Lateral Holes**

Sec: 8 TWP: 26N RGE: 13W County: WOODS

SE NW NW NE

2066 FSL 648 FWL of 1/4 SEC

Depth of Deviation: 4758 Radius of Turn: 1592 Direction: 0 Total Length: 3500

Measured Total Depth: 9850 True Vertical Depth: 5740 End Pt. Location From Release, Unit or Property Line: 574

**FOR COMMISSION USE ONLY**

1110618

Status: Accepted

RECEIVED

MAY 18 2011

Form 1002A Rev. 2009

OKLAHOMA CORPORATION COMMISSION

AS SUBMITTED

PLEASE TYPE OR USE BLACK NOTE:

Attach copy of original if recompletion or ree

API NO. 151-23464 OTC PROD UNIT NO.

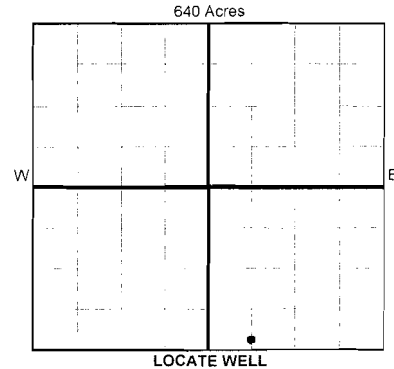
ORIGINAL AMENDED (Reason)

COMPLETION REPORT

TYPE OF DRILLING OPERATION STRAIGHT HOLE DIRECTIONAL HOLE HORIZONTAL HOLE SERVICE WELL

If directional or horizontal, see reverse for bottom hole location.

Woods SEC 8 TWP 26N RGE 13W Lohmann WELL NO. 1H-8 S2 1/4 S2 1/4 SW 1/4 SE 1/4 FSL OF 1/4 SEC 140 FWL OF 1/4 SEC 660 ELEVATIO N Derrick Ground 1434 Latitude (if known) 36\*44'23.1"N Longitude (if known) 98\*37'08.4"W OPERATOR NAME EAGLE ENERGY PRODUCTION LLC OTC/OCC OPERATOR NO. 22583 ADDRESS NINE EAST FOURTH ST STE 200 CITY TULSA STATE OK ZIP 74103



COMPLETION TYPE SINGLE ZONE MULTIPLE ZONE COMMINGLED LOCATION EXCEPTION ORDER INCREASED DENSITY ORDER NO.

CASING & CEMENT (Form 1002C must be attached) Table with columns: TYPE, SIZE, WEIGHT, GRADE, FEET, PSI, SAX, TOP OF CMT. Includes rows for CONDUCTOR, SURFACE, INTERMEDIATE, PRODUCTION, LINER.

PACKER @ BRAND & TYPE PLUG @ TYPE PLUG @ TYPE PLUG @ TYPE

COMPLETION & TEST DATA BY PRODUCING FORMATION 359MSSP

Table with columns: FORMATION, SPACING & SPACING ORDER NUMBER, CLASS, PERFORATED INTERVALS, ACID/VOLUME, FRACTURE TREATMENT (Fluids/Prop Amounts).

Min Gas Allowable (165:10-17-7) Gas Purchaser/Measurer SemGas First Sales Date 3/27/2011

INITIAL TEST DATA Table with columns: INITIAL TEST DATE, OIL-BBL/DAY, OIL-GRAVITY ( API), GAS-MCF/DAY, GAS-OIL RATIO CU FT/BBL, WATER-BBL/DAY, PUMPING OR FLOWING, INITIAL SHUT-IN PRESSURE, CHOKE SIZE, FLOW TUBING PRESSURE.

A record of the formations drilled through, and pertinent remarks are presented on the reverse. I declare that I have knowledge of the contents of this report and am authorized by my organization to make this report, which was prepared by me or under my supervision and direction, with the data and facts stated herein to be true, correct, and complete to the best of my knowledge and belief.

SIGNATURE LADD SULLINS NAME (PRINT OR TYPE) DATE 5-13-11 PHONE NUMBER 918-746-1350 ADDRESS NINE EAST FOURTH ST STE 200 CITY TULSA STATE OK ZIP 74103 EMAIL ADDRESS SULLINS@EAGLEENERGYOK.COM

PLEASE TYPE OR USE BLACK INK ONLY  
FORMATION RECORD

Give formation names and tops, if available, or descriptions and thickness of formations drilled through. Show intervals cored or drillstem tested.

LEASE NAME Lohmann WELL NO. 1H-8

NAMES OF FORMATIONS	TOP
Heebner	4,382
Haskell	4,720
Tonkawa	4,777
Avant	5,075
Cottage Grove	5,128
Hogshooter Lm	5,231
Checkerboard	5,253
Oswego	5,399
Cherokee	5,520
Verdigris	5,556
Red Fork	5,639
Mississippi	5,704

FOR COMMISSION USE ONLY

ITD on file  YES  NO

APPROVED \_\_\_\_\_ DISAPPROVED \_\_\_\_\_

2) Reject Codes \_\_\_\_\_

\_\_\_\_\_

\_\_\_\_\_

\_\_\_\_\_

Were open hole logs run? \_\_\_ yes  no

Date Last log was run \_\_\_\_\_ N/A

Was CO<sub>2</sub> encountered? \_\_\_ yes  no at what depths? \_\_\_\_\_

Was H<sub>2</sub>S encountered? \_\_\_ yes  no at what depths? \_\_\_\_\_

Were unusual drilling circumstances encountered? \_\_\_ yes  no  
If yes, briefly explain below \_\_\_\_\_

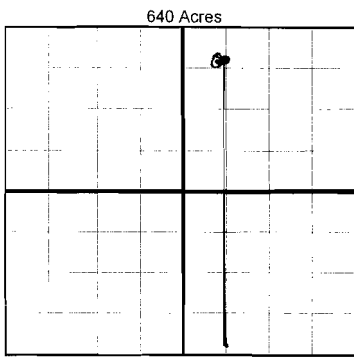
Other remarks:

\_\_\_\_\_

\_\_\_\_\_

\_\_\_\_\_

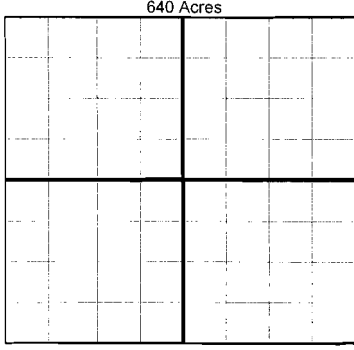
\_\_\_\_\_



If more than three drainholes are proposed, attach a separate sheet indicating the necessary information.

Direction must be stated in degrees azimuth. Please note, the horizontal drainhole and its end point must be located within the boundaries of the lease or spacing unit.

Directional surveys are required for all drainholes and directional wells.



BOTTOM HOLE LOCATION FOR DIRECTIONAL HOLE

SEC	TWP	RGE	COUNTY				
Spot Location	1/4	1/4	1/4	1/4	Feet From 1/4 Sec Lines	FSL	FWL
Measured Total Depth	True Vertical Depth		BHL From Lease, Unit, or Property Line:				

BOTTOM HOLE LOCATION FOR HORIZONTAL HOLE: (LATERALS)

LATERAL #1

SEC	TWP	RGE	COUNTY				
SEC 8	TWP 26N	RGE 13W	COUNTY Woods				
Spot Location	82 SE 1/4	N2 1/4	NW 1/4	NE 1/4	Feet From 1/4 Sec Lines	FSL 2066	FWL 648
Depth of Deviation	4758	Radius of Turn	1592	Direction	0 deg	Total Length	3500
Measured Total Depth	9850	True Vertical Depth	5740	BHL From Lease, Unit, or Property Line:			1992 FEL

LATERAL #2

SEC	TWP	RGE	COUNTY				
Spot Location	1/4	1/4	1/4	1/4	Feet From 1/4 Sec Lines	FSL	FWL
Depth of Deviation	Radius of Turn		Direction			Total Length	
Measured Total Depth	True Vertical Depth		BHL From Lease, Unit, or Property Line:				

LATERAL #3

SEC	TWP	RGE	COUNTY				
Spot Location	1/4	1/4	1/4	1/4	Feet From 1/4 Sec Lines	FSL	FWL
Depth of Deviation	Radius of Turn		Direction			Total Length	
Measured Total Depth	True Vertical Depth		BHL From Lease, Unit, or Property Line:				