

Oklahoma Corporation Commission
Oil & Gas Conservation Division
Post Office Box 52000
Oklahoma City, Oklahoma 73152-2000
Rule 165: 10-3-25

Form 1002A

API No.: 35151234330000

Completion Report

Spud Date: August 18, 2010

OTC Prod. Unit No.: 151-204981

Drilling Finished Date: August 27, 2010

1st Prod Date: January 31, 2011

Completion Date: January 07, 2011

Drill Type: STRAIGHT HOLE

Min Gas Allowable: Yes

Well Name: THOMPSON 1-2

Purchaser/Measurer: CHESAPEAKE OPERATING INC

Location: WOODS 2 28N 14W
NW SE SE NW
2000 FNL 2200 FWL of 1/4 SEC
Derrick Elevation: 1452 Ground Elevation: 1437

First Sales Date: 01/31/2011

Operator: CHESAPEAKE OPERATING INC 17441
P.O. Box 18496
6100 N WESTERN AVE
OKLAHOMA CITY, OK 73154-0496

Completion Type	
X	Single Zone
	Multiple Zone
	Commingled

Location Exception
Order No
There are no Location Exception records to display.

Increased Density
Order No
There are no Increased Density records to display.

Casing and Cement							
Type	Size	Weight	Grade	Feet	PSI	SAX	Top of CMT
SURFACE	8 5/8	24	J-55	841		515	SURFACE
PRODUCTION	5 1/2	17	J-55	5800		210	3540

Liner								
Type	Size	Weight	Grade	Length	PSI	SAX	Top Depth	Bottom Depth
There are no Liner records to display.								

Total Depth: 5800

Packer	
Depth	Brand & Type
5020	R

Plug	
Depth	Plug Type
5200	CIBP
5743	PBTD

Initial Test Data										
Test Date	Formation	Oil BBL/Day	Oil-Gravity (API)	Gas MCF/Day	Gas-Oil Ratio Cu FT/BBL	Water BBL/Day	Pumpin or Flowing	Initial Shut-In Pressure	Choke Size	Flow Tubing Pressure
Feb 12, 2011	MISSISSIPPI LIME	12		77	6417	510	ARTIFICIA			108

Completion and Test Data by Producing Formation										
Formation Name: MISSISSIPPI LIME			Code: 351MSSLM			Class: OIL				
Spacing Orders				Perforated Intervals						
Order No		Unit Size		From			To			
100277		640		5072			5278			
Acid Volumes				Fracture Treatments						
15% NEFE HCL ACID 120 BBLS				2% SLICK WATER 2,849 BBLS PROPPANT 156,150 LB 15# 20# LIN GEL 652 BBLS						

Formation	Top
MISSISSIPPI LIME	5062

Were open hole logs run? Yes
Date last log run: August 25, 2010

Were unusual drilling circumstances encountered? No
Explanation:

Other Remarks
PLUG BACK DEPTH AT 5,743 FT.

FOR COMMISSION USE ONLY	
Status: Accepted	1109551

API NO. 35-151-23433
 OTC PROD.
 UNIT NO. 151-204981

PLEASE TYPE OR USE BLACK INK ONLY
 NOTE: Attach copy of original 1002A if recompletion or re-



RECEIVED Form 1002A
 826384 Rev. 2009

FEB 28 2011

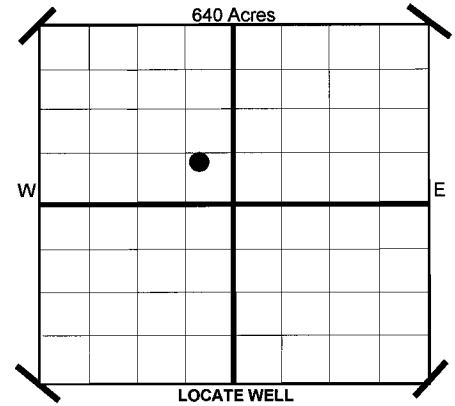
OKLAHOMA CORPORATION
 COMMISSION

ORIGINAL
 AMENDED
 Reason Amended

COMPLETION REPORT

TYPE OF DRILLING OPERATION
 STRAIGHT HOLE DIRECTIONAL HOLE HORIZONTAL HOLE
 SERVICE WELL
 If directional or horizontal, see reverse for bottom hole location.

SPUD DATE 8/18/2010
 DRLG FINISHED DATE 8/27/2010
 DATE OF WELL COMPLETION 1/7/2011
 1ST PROD DATE 1/31/2011
 RECOMP DATE
 Longitude (if Known)
 OTC/OCC OPERATOR NO. 17441



COUNTY WOODS SEC 2 TWP 28N RGE 14W
 LEASE NAME THOMPSON WELL NO 1-2
 SHL NW 1/4 SE 1/4 SE 1/4 NW 1/4 FNL 2,000' FWL 2,200'
 ELEVATION Derrick Fl 1,452' Ground 1,437' Latitude (if Known)
 OPERATOR NAME CHESAPEAKE OPERATING, INC. ADDRESS P.O. BOX 18496
 CITY OKLAHOMA CITY STATE OK ZIP 73154

COMPLETION TYPE

SINGLE ZONE
 MULTIPLE ZONE
 Application Date
 COMMINGLED
 Application Date
 LOCATION EXCEPTION ORDER NO.
 INCREASED DENSITY ORDER NO.

CASING & CEMENT (Form 1002C must be attached)

TYPE	SIZE	WEIGHT	GRADE	FEET	PSI	SAX	TOP
CONDUCTOR							
SURFACE	8 5/8"	24#	J-55	841'		515	SURFACE
INTERMEDIATE							
PRODUCTION	5 1/2"	17#	J-55	5,800'		210	3,540'
TUBING	2 3/8	4.7#	J-55	5,052'			

PACKER @ 5,020' BRAND & TYPE R PLUG @ 5,743' TYPE PBDT PLUG @ 5,200' TYPE CIBP TOTAL DEPTH 5,800'
 PACKER @ BRAND & TYPE PLUG @ TYPE PLUG @ TYPE

COMPLETION & TEST DATA BY PRODUCING FORMATION

351MS6LM

FORMATION	MISSISSIPPI LIME	
SPACING & SPACING ORDER NUMBER	640	100277
CLASS: Oil, Gas, Dry, Inj. Disp, Comm Disp, Svc	OIL	
PERFORATED INTERVAL	5072'-5112'	UNDER PLUG 5268'-5278'
ACID/VOLUME	15% NEFe HCl Acid 120 Bbls	
FRACTURE TREATMENT (Fluids/Prop Amounts)	2% Slick Water 2,849 Bbls	15#, 20# Lin. Gel. 652 Bbls
	Proppant 156,150 lb	

Minimum Gas Allowable (165:10-17) OR Oil Allowable (165:10-13-3)
 Gas Purchaser/Measurer Chesapeake Operating, Inc.
 1st Sales Date 1/31/2011

INITIAL TEST DATA

INITIAL TEST DATE	2/12/2011
OIL-BBL/DAY	12
OIL-GRAVITY (API)	
GAS-MCF/DAY	77
GAS-OIL RATIO CU FT/BBL	6,417
WATER-BBL/DAY	510
PUMPING OR FLOWING	Artificial Lift
INITIAL SHUT-IN PRESSURE	
CHOKE SIZE	
FLOW TUBING PRESSURE	108

A record of the formations drilled through, and pertinent remarks are presented on the reverse. I declare that I have knowledge of the contents of this report and am authorized by my organization to make this report, which was prepared by me or under my supervision and direction, with the data and facts stated herein to be true, correct, and complete to the best of my knowledge and belief.

Ted Campbell
 SIGNATURE TED CAMPBELL - DISTRICT MANAGER 2/23/2011 405-848-8000
 NAME (PRINT OR TYPE) DATE PHONE NUMBER
 P.O. BOX 18496 OKLAHOMA CITY OK 73154 jamal.daneshfar@chk.com
 ADDRESS CITY STATE ZIP EMAIL ADDRESS

PLEASE TYPE OR USE BLACK INK ONLY
FORMATION RECORD

Give formation names and tops, if available, or descriptions and thickness of formations drilled through. Show intervals cored or drillstem tested.

LEASE NAME THOMPSON

WELL NO. 1-2

NAMES OF FORMATIONS	TOP
MISSISSIPPI LIME	5,062'

FOR COMMISSION USE ONLY

ITD on file YES NO

APPROVED _____ DISAPPROVED _____

2) Reject Codes

Were open hole logs run? X yes no

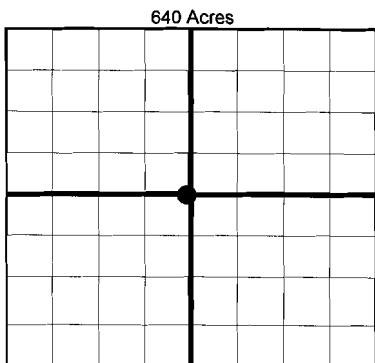
Date Last log was run 8/25/2010

Was CO₂ encountered? yes X no at what depths?

Was H₂S encountered? yes X no at what depths?

Were unusual drilling circumstances encountered? yes X no
If yes, briefly explain.

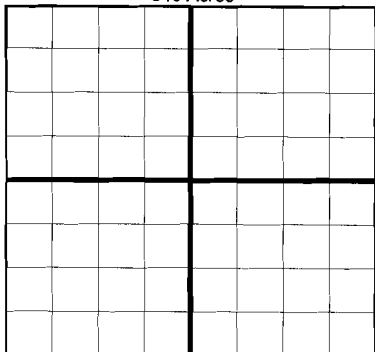
Other remarks: Plug back depth at 5,743 ft.



If more than three drainholes are proposed, attach a separate sheet indicating the necessary information.

Direction must be stated in degrees azimuth. Please note, the horizontal drainhole and its end point must be located within the boundaries of the lease or spacing unit.

Directional surveys are required for all drainholes and directional wells.
640 Acres



BOTTOM HOLE LOCATION FOR DIRECTIONAL HOLE

SEC	TWP	RGE	COUNTY							
Spot Location				1/4	1/4	1/4	1/4	Feet From 1/4 Sec Lines	FSL	FWL
Measured Total Depth				True Vertical Depth		BHL From Lease, Unit, or Property Line:				

BOTTOM HOLE LOCATION FOR HORIZONTAL HOLE: (LATERALS)

LATERAL #1

SEC	TWP	RGE	COUNTY							
Spot Location				1/4	1/4	1/4	1/4	Feet From Sec Lines	FNL	FWL
Depth of Deviation				Radius of Turn		Direction		Total Length		
Measured Total Depth				True Vertical Depth		BHL From Lease, Unit, or Property Line:				

LATERAL #2

SEC	TWP	RGE	COUNTY							
Spot Location				1/4	1/4	1/4	1/4	Feet From 1/4 Sec Lines	FSL	FWL
Depth of Deviation				Radius of Turn		Direction		Total Length		
Measured Total Depth				True Vertical Depth		BHL From Lease, Unit, or Property Line:				

LATERAL #3

SEC	TWP	RGE	COUNTY							
Spot Location				1/4	1/4	1/4	1/4	Feet From 1/4 Sec Lines	FSL	FWL
Depth of Deviation				Radius of Turn		Direction		Total Length		
Measured Total Depth				True Vertical Depth		BHL From Lease, Unit, or Property Line:				