

Oklahoma Corporation Commission
Oil & Gas Conservation Division
Post Office Box 52000
Oklahoma City, Oklahoma 73152-2000
Rule 165: 10-3-25

Form 1002A

API No.: 35009217730000

Completion Report

Spud Date: May 06, 2010

OTC Prod. Unit No.: 009-204318

Drilling Finished Date: August 05, 2010

1st Prod Date: September 13, 2010

Completion Date: September 13, 2010

Drill Type: HORIZONTAL HOLE

Well Name: THETFORD 4-23H

Purchaser/Measurer: ATLAS

Location: BECKHAM 23 11N 23W
NE NW NW NE
200 FNL 2200 FEL of 1/4 SEC
Derrick Elevation: 0 Ground Elevation: 2016

First Sales Date: 09/17/2010

Operator: APACHE CORPORATION 6778

6120 S YALE AVE STE 1500
TULSA, OK 74136-4224

Completion Type	
X	Single Zone
	Multiple Zone
	Commingled

Location Exception	
Order No	
	573537
	578658

Increased Density	
Order No	
	573267

Casing and Cement							
Type	Size	Weight	Grade	Feet	PSI	SAX	Top of CMT
SURFACE	13.375	68	N80	1530		1495	SURFACE
INTERMEDIATE	9.625	47	P110	10900		2600	SURFACE
PRODUCTION	5 1/2	17 & 20	P110	15650		1300	10000

Liner								
Type	Size	Weight	Grade	Length	PSI	SAX	Top Depth	Bottom Depth
There are no Liner records to display.								

Total Depth: 15650

Packer	
Depth	Brand & Type
There are no Packer records to display.	

Plug	
Depth	Plug Type
There are no Plug records to display.	

Initial Test Data										
Test Date	Formation	Oil BBL/Day	Oil-Gravity (API)	Gas MCF/Day	Gas-Oil Ratio Cu FT/BBL	Water BBL/Day	Pumpin or Flowing	Initial Shut-In Pressure	Choke Size	Flow Tubing Pressure
Sep 24, 2010	HOGSHOOTER	2043	44.2	3865	1892	210	FLOWING	1910	40/64	

Completion and Test Data by Producing Formation										
Formation Name: HOGSHOOTER			Code: 405HGSR			Class: OIL				
Spacing Orders				Perforated Intervals						
Order No	Unit Size			From			To			
258251	640			11380			15501			
Acid Volumes				Fracture Treatments						
2,000 GAL 15% HCL				765,190 GAL 35# LINEAR GEL 1,080,840 GAL X-LINK GEL 1,867,500# 18/40 VERSALITE PROP						

Formation	Top
SHAWNEE	8535
HEEBNER	8822
TONKAWA	10017
COTTAGE GROVE	10557
HOGSHOOTER	11343

Were open hole logs run? Yes
Date last log run: August 02, 2010
Were unusual drilling circumstances encountered? No
Explanation:

Other Remarks
There are no Other Remarks.

Lateral Holes
Sec: 23 TWP: 11N RGE: 23W County: BECKHAM NW SW SW SE 645 FSL 2580 FEL of 1/4 SEC Depth of Deviation: 10800 Radius of Turn: 573 Direction: 187 Total Length: 4460 Measured Total Depth: 15650 True Vertical Depth: 11274 End Pt. Location From Release, Unit or Property Line: 645

FOR COMMISSION USE ONLY
Status: Accepted
1303

API NO. 009-21773
 OTC PROD. UNIT NO. 009-204318

PLEASE TYPE OR USE BLACK INK
 NOTE:
 Attach copy of original 1002A if re

AS SUBMITTED

RECEIVED
 Form 1002A
 Rev. 2009

OCT 06 2010

OKLAHOMA CORPORATION
 COMMISSION

ORIGINAL
 AMENDED (Reason)

COMPLETION REPORT

TYPE OF DRILLING OPERATION

STRAIGHT HOLE DIRECTIONAL HOLE HORIZONTAL HOLE
 SERVICE WELL

If directional or horizontal, see reverse for bottom hole location.

COUNTY	Beckham	SEC	23	TWP	11N	RGE	23W	SPUD DATE	5/6/2010
LEASE NAME	Thetford			WELL NO.	4-23H	DATE OF WELL COMPLETION	9/13/2010	DRLG FINISHED DATE	8/5/2010
NE 1/4 NW 1/4 NW 1/4 NE 1/4	FNL	200	FEL OF 1/4 SEC	2200	1st PROD DATE	9/13/2010			
ELEVATION Derrick FL	Ground	2016	Latitude (if known)	35°25'15.49"N	Longitude (if known)	99°36'01.71"W			
OPERATOR NAME	Apache Corporation			OTC/OCC OPERATOR NC	06778				
ADDRESS	6120 S. Yale, Suite 1500								
CITY	Tulsa	STATE	OK	ZIP	74136				

640 Acres									

LOCATE WELL

COMPLETION TYPE

<input checked="" type="checkbox"/>	SINGLE ZONE
<input type="checkbox"/>	MULTIPLE ZONE Application Date
<input type="checkbox"/>	COMMINGLED Application Date
LOCATION EXCEPTION ORDER NO.	573537
INCREASED DENSITY ORDER NO.	573267

CASING & CEMENT (Form 1002C must be attached)

TYPE	SIZE	WEIGHT	GRADE	FEET	PSI	SAX	TOP OF CMT	
CONDUCTOR								
SURFACE	13.375	68	N80	1530		1495	surface	
INTERMEDIATE	9.625	47	P110	10,900		2600	surface	
PRODUCTION	5 1/2	17&20	P110	15,650		1300	10,000	
LINER								
							TOTAL DEPTH	15,650

PACKER @ _____ BRAND & TYPE _____ PLUG @ _____ TYPE _____ PLUG @ _____ TYPE _____
 PACKER @ _____ BRAND & TYPE _____ PLUG @ _____ TYPE _____ PLUG @ _____ TYPE _____

COMPLETION & TEST DATA BY PRODUCING FORMATION

FORMATION	Hogshooter				
SPACING & SPACING ORDER NUMBER	640 - 258251				
CLASS: Oil, Gas, Dry, Inj, Disp, Comm Disp, Svc	Oil				
PERFORATED INTERVALS	11,380-15,501 (OA)				
	(9 stage frac)				
ACID/VOLUME	2000 gal 15% HCL				
FRACTURE TREATMENT (Fluids/Prop Amounts)	765,190 gal 35# linear gel				
	1,080,840 gal x-link gel				
	1,867,500# 18/40 Versalite Prop				

Min Gas Allowable (165:10-17-7)
 OR
 Oil Allowable (165:10-13-3)

Gas Purchaser/Measurer
 First Sales Date
 Atlas
 9/17/2010

INITIAL TEST DATA

INITIAL TEST DATE	9/24/2010		
OIL-BBL/DAY	2043		
OIL-GRAVITY (API)	44.2		
GAS-MCF/DAY	3865		
GAS-OIL RATIO CU FT/BBL	1892		
WATER-BBL/DAY	210		
PUMPING OR FLOWING	Flowing		
INITIAL SHUT-IN PRESSURE	1910		
CHOKE SIZE	40/64		
FLOW TUBING PRESSURE	0		

A record of the formations drilled through, and pertinent remarks are presented on the reverse. I declare that I have knowledge of the contents of this report and am authorized by my organization to make this report, which was prepared by me or under my supervision and direction, with the data and facts stated herein to be true, correct, and complete to the best of my knowledge and belief.

Marcia Henderson
 SIGNATURE
 6120 S. Yale, Suite 1500
 ADDRESS

Marcia Henderson
 NAME (PRINT OR TYPE)
 Tulsa
 CITY
 OK
 STA
 74136
 ZIP

10/4/2010
 DATE

(918) 491-4984
 PHONE NUMBER

marcia.henderson@apachecorp.com
 EMAIL ADDRESS

PLEASE TYPE OR USE BLACK INK ONLY
FORMATION RECORD

Give formation names and tops, if available, or descriptions and thickness of formation drilled through. Show intervals cored or drillstem tested.

LEASE NAME Thetford WELL NO. 4-23H

NAMES OF FORMATIONS	TOP
Shawnee	8,535
Heebner	8,822
Tonkawa	10017
Cottage Grove	10,557
Hogshooter	11,343

FOR COMMISSION USE ONLY

ITD on file YES NO

APPROVED _____ DISAPPROVED _____

2) Reject Codes _____

Were open hole logs run? yes no

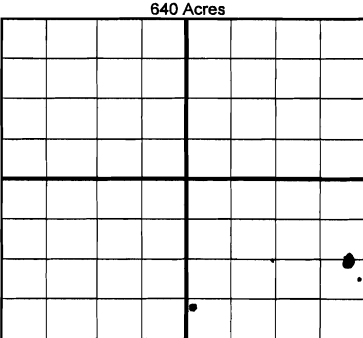
Date Last log was run 8/2/2010

Was CO₂ encountered? yes no at what depths? _____

Was H₂S encountered? yes no at what depths? _____

Were unusual drilling circumstances encountered? yes no
If yes, briefly explain below _____

Other remarks: _____



BOTTOM HOLE LOCATION FOR DIRECTIONAL HOLE

SEC	TWP	RGE	COUNTY
Spot Location			
1/4	1/4	1/4	1/4
Measured Total Depth	True Vertical Depth	BHL From Lease, Unit, or Property Line	

BOTTOM HOLE LOCATION FOR HORIZONTAL HOLE: (LATERALS)

LATERAL #1

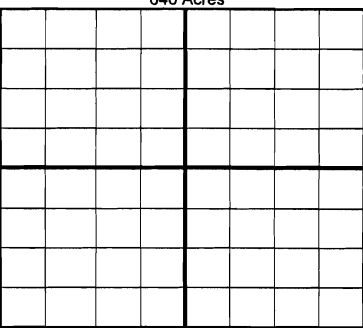
SEC	TWP	RGE	COUNTY
23	11N	23W	Beckham
Spot Location			
E/2 N 1/4	E/2 1/4	S/2 1/4	SE 1/4
Depth of Deviation	Radius of Turn	Direction	Total Length
10,800	573	187	4,460
Measured Total Depth	True Vertical Depth	BHL From Lease, Unit, or Property Line	
15,650	11,274	645 FSL & 2580 FEL	

If more than three drainholes are proposed, attach a separate sheet indicating the necessary information.

Direction must be stated in degrees azimuth.

Please note, the horizontal drainhole and its end point must be located within the boundaries of the lease or spacing unit.

Directional surveys are required for all drainholes and directional wells.



LATERAL #2

SEC	TWP	RGE	COUNTY
Spot Location			
1/4	1/4	1/4	1/4
Depth of Deviation	Radius of Turn	Direction	Total Length
Measured Total Depth	True Vertical Depth	BHL From Lease, Unit, or Property Line	

LATERAL #3

SEC	TWP	RGE	COUNTY
Spot Location			
1/4	1/4	1/4	1/4
Depth of Deviation	Radius of Turn	Direction	Total Length
Measured Total Depth	True Vertical Depth	BHL From Lease, Unit, or Property Line	