

Oklahoma Corporation Commission  
Oil & Gas Conservation Division  
Post Office Box 52000  
Oklahoma City, Oklahoma 73152-2000  
Rule 165: 10-3-25

Form 1002A

API No.: 35045228890002

**Completion Report**

Spud Date: May 01, 2010

OTC Prod. Unit No.: 045-204105

Drilling Finished Date: June 01, 2010

1st Prod Date: July 20, 2010

**Amended**

Completion Date: July 18, 2010

Amend Reason: FORMATION MARMATON, NOT CLEVELAND

**Drill Type: HORIZONTAL HOLE**

Well Name: BERRYMAN 23 #2H

Purchaser/Measurer: DCP MIDSTREAM LP

Location: ELLIS 23 17N 24W  
NE SW SE SE  
432 FSL 1940 FWL of 1/4 SEC  
Derrick Elevation: 0 Ground Elevation: 2282

First Sales Date: 07/23/2010

Operator: EOG RESOURCES INC 16231

3817 NW EXPWY STE 500  
OKLAHOMA CITY, OK 73112-1483

Completion Type	
X	Single Zone
	Multiple Zone
	Commingled

Location Exception
Order No
There are no Location Exception records to display.

Increased Density
Order No
There are no Increased Density records to display.

Casing and Cement							
Type	Size	Weight	Grade	Feet	PSI	SAX	Top of CMT
SURFACE	9 5/8	36	J-55	1492		515	SURFACE
INTERMEDIATE	7	26	P-110	9980		350	7182
PRODUCTION	4 1/2	13.5	P-110	13558			

Liner								
Type	Size	Weight	Grade	Length	PSI	SAX	Top Depth	Bottom Depth
There are no Liner records to display.								

**Total Depth: 13558**

Packer	
Depth	Brand & Type
9154	PACKER

Plug	
Depth	Plug Type
There are no Plug records to display.	

Initial Test Data										
Test Date	Formation	Oil BBL/Day	Oil-Gravity (API)	Gas MCF/Day	Gas-Oil Ratio Cu FT/BBL	Water BBL/Day	Pumpin or Flowing	Initial Shut-In Pressure	Choke Size	Flow Tubing Pressure
Jul 23, 2010	MARMATON	124	44	213	1718	310	PUMPING	2400	OPEN	220

Completion and Test Data by Producing Formation										
Formation Name: MARMATON			Code: 404MRMN			Class: OIL				
<b>Spacing Orders</b>				<b>Perforated Intervals</b>						
<b>Order No</b>	<b>Unit Size</b>			<b>From</b>			<b>To</b>			
578772	640			9879			13368			
<b>Acid Volumes</b>				<b>Fracture Treatments</b>						
There are no Acid Volume records to display.				FRAC W/2.073MM# PROP + 1.637MM GAL SLICK H2O						

Formation	Top
TOP OF MARMATON	9358
MARMATON MFS	9594

Were open hole logs run? No

Date last log run:

Were unusual drilling circumstances encountered? No

Explanation:

Other Remarks
DETERMINED PROPER FORMATION WAS MARMATON IN LIEU OF CLEVELAND.

Lateral Holes
Sec: 23 TWP: 17N RGE: 24W County: ELLIS
NW SE NE NE
1927 FSL 1987 FWL of 1/4 SEC
Depth of Deviation: 9179 Radius of Turn: 9694 Direction: 359 Total Length: 3534
Measured Total Depth: 13558 True Vertical Depth: 9628 End Pt. Location From Release, Unit or Property Line: 653

FOR COMMISSION USE ONLY
Status: Accepted
1278

API NO. **045-22889**  
 OTC PROD. UNIT NO. **045-204105**

PLEASE TYPE OR USE BLACK INK ONLY  
 NOTE: Attach copy of original 1002A if recompletion or reentry.

OKLAHOMA CORPORATION COMMISSION  
 Oil & Gas Conservation Commission  
 Post Office Box 52000  
 Oklahoma City, Oklahoma 73152-2000  
 Rule 165:10-3-25

**RECEIVED**  
 Form 1002A  
 Rev. 10/07

OCT 07 2010

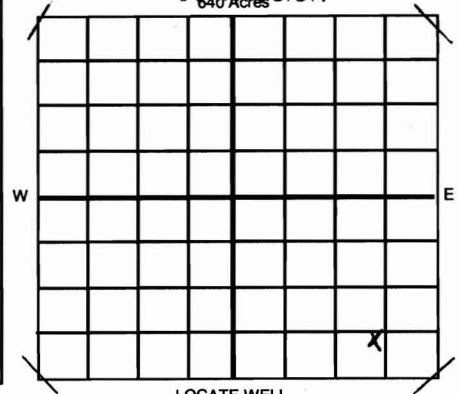
ORIGINAL  
 AMENDED  
 Reason Amended **Frmtn Marmaton, not Cleveland**

COMPLETION REPORT

TYPE OF DRILLING OPERATION  
 STRAIGHT HOLE \_\_\_\_\_ DIRECTIONAL HOLE \_\_\_\_\_  HORIZONTAL HOLE  
 SERVICE WELL \_\_\_\_\_

SPUD DATE **5/1/10**  
 DRLG FINISHED **6/1/10**  
 WELL COMPLETION **7/18/10**  
 1ST PROD DATE **7/20/10**  
 RECOMP DATE \_\_\_\_\_  
 Longitude if known **99° 43' 17.8" W**

OKLAHOMA CORPORATION  
 COMMISSION



If directional or horizontal, see reverse for bottom hole location.

COUNTY: **ELLIS** SEC **23** TWP **17N** RGE **24W**  
 LEASE NAME: **BERRYMAN** WELL NO: **23 #2H**  
 SHL: **NE 1/4 SW 1/4 SE 1/4 SE 1/4** FSL **432** FWL OF 1/4 SEC **1940**  
 ELEVATION: Derrick Fl \_\_\_\_\_ Ground **2282'** Latitude if known **35° 55' 38.0" N**  
 OPERATOR NAME **EOG RESOURCES, INC.** OTC/OCC OPER NO **16231-0**  
 ADDRESS **3817 NW EXPRESSWAY, SUITE 500**  
 CITY **OKLAHOMA CITY** STATE **OK** ZIP **73112**

COMPLETION TYPE  
 SINGLE ZONE  
 MULTIPLE ZONE  
 Application Date \_\_\_\_\_  
 COMMINGLED  
 Application Date \_\_\_\_\_  
 LOCATION EXCEPTION ORDER NO. \_\_\_\_\_  
 INCREASED DENSITY ORDER NO. \_\_\_\_\_

CASING & CEMENT (Form 1002C must be attached)

TYPE	SIZE	WEIGHT	GRADE	FEET	PSI	SAX	TOP
Conductor							
Surface	9 5/8	36#	J-55	1492		515	SURFACE
Intermediate	7"	26#	P-110	9980		350	7182
Production	4 1/2	13.5#	P-110	13558		- - -	- - -
Liner							

PACKER @ **9154'** BRAND & TYPE \_\_\_\_\_ PLUG@ \_\_\_\_\_ TYPE \_\_\_\_\_ PLUG@ \_\_\_\_\_ TYPE \_\_\_\_\_ TOTAL DEPTH **13558**  
 PACKER @ \_\_\_\_\_ BRAND & TYPE \_\_\_\_\_ PLUG@ \_\_\_\_\_ TYPE \_\_\_\_\_ PLUG@ \_\_\_\_\_ TYPE \_\_\_\_\_

COMPLETION & TEST DATA BY PRODUCING

FORMATION	SPACING & SPACING ORDER NUMBER	CLASS: Oil, Gas, Dry, Inj. disp. Comm Disp. svc	PERFORATED INTERVALS	ACID/VOLUME Fracture Treatment (Fluids/Prop Amounts)
<b>MARMATON*</b>	<b>640 AC/578772*</b>	<b>OIL</b>	<b>9879-13368</b>	<b>FRAC w/2.073MM # PROP + 1.637 MM GAL SLICKH2O</b>

**AS SUBMITTED**

Request minimum gas allowable (165:10-17-7) \_\_\_\_\_ Gas Purchaser/Measurer **DCP MIDSTREAM, LP** 1st Sales Date **7/23/10**

INITIAL TEST DATA

INITIAL TEST DATE	<b>07/23/10</b>
OIL-BBL/DAY	<b>124</b>
OIL-GRAVITY ( API)	<b>44</b>
GAS-MCF/DAY	<b>213</b>
GAS-OIL RATIO CU FT/BBL	<b>1718</b>
WATER-BBL/DAY	<b>310</b>
PUMPING OR FLOWING	<b>Pumping</b>
INITIAL SHUT-IN PRESSURE	<b>2400</b>
CHOKE SIZE	<b>Open</b>
FLOW TUBING PRESSURE	<b>220</b>

A record of the formations drilled through, and pertinent remarks are presented on the reverse. I declare that I have knowledge of the contents of this report and am authorized by my organization to make this report, which was prepared by me or under my supervision and direction, with the data and facts stated herein to be true, correct, and complete to the best of my knowledge and belief.

SIGNATURE **Dawn Rockel** NAME (PRINT OR TYPE) **DAWN ROCKEL** DATE **10/6/2010** PHONE NUMBER **405/246-3226**  
 ADDRESS **3817 NW EXPRESSWAY, SUITE 500 OKLAHOMA CITY OK 73112** EMAIL ADDRESS **dawn.rockel@eogresources.com**

**PLEASE TYPE OR USE BLACK INK ONLY  
FORMATION RECORD**

LEASE NAME BERRYMAN

WELL NO. 23 #2H

Give formation names and tops, if available, or descriptions and thickness of formations drilled through. Show intervals cored or drillstem tested.

NAME OF FORMATIONS	TOP
TOP OF MARMATON	9358'
MARMATON MFS	9594

FOR COMMISSION USE ONLY

ITD on file  YES  NO

APPROVED \_\_\_\_\_ DISAPPROVED \_\_\_\_\_

2) Reject Codes

\_\_\_\_\_

\_\_\_\_\_

\_\_\_\_\_

\_\_\_\_\_

Was open hole logs run?  yes  no

Date last log was run \_\_\_\_\_

Was CO2 encountered?  yes  no at what depths? \_\_\_\_\_

Was H2S encountered?  yes  no at what depths? \_\_\_\_\_

Were unusual drilling circumstances encountered?  Yes  No  
If yes, briefly explain: \_\_\_\_\_

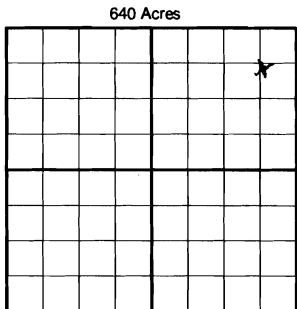
Other remarks: **\* DETERMINED PROPER FORMATION WAS MARMATON IN LIEU OF CLEVELAND.**

\_\_\_\_\_

\_\_\_\_\_

\_\_\_\_\_

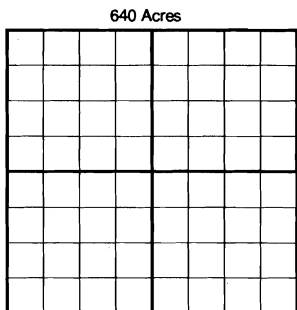
\_\_\_\_\_



If more than two drainholes are proposed, attach a separate sheet indicating the necessary information.

Direction must be stated in degrees azimuth. Please note, the horizontal drainhole and its end point must be located within the boundaries of the lease or spacing unit.

**Directional surveys are required for all drainholes and directional wells.**



**BOTTOM HOLE LOCATION FOR DIRECTIONAL HOLE**

SEC	TWP	RGE	COUNTY
Spot Location 1/4 1/4 1/4 1/4	Feet From Quarter Section Lines FSL FWL		
Measured Total Depth	True Vertical Depth	BHL From Lease, Unit or Property Line:	

**BOTTOM HOLE LOCATION FOR HORIZONTAL HOLE: (LATERALS)**

**LATERAL #1**

SEC	TWP	RGE	COUNTY
23	17N	24W	ELLIS
Spot Location NW 1/4 SE 1/4 NE 1/4 NE 1/4	Feet From Quarter Section Lines 1927 FSL 1987 FWL		
Depth of Deviation 9179' MD	Radius of Turn 9694' TVD	Direction 359'	Total Length 3534
Measured Total Depth 13558' MD	True Vertical Depth 9628' TVD	End Pt Location From Lease, Unit or Property Line: 653'	

**LATERAL #2**

SEC	TWP	RGE	COUNTY
Spot Location 1/4 1/4 1/4 1/4	Feet From Quarter Section Lines FSL FWL		
Depth of Deviation	Radius of Turn	Direction	Total Length
Measured Total Depth	True Vertical Depth	End Pt Location From Lease, Unit or Property Line:	

**LATERAL #3**

SEC	TWP	RGE	COUNTY
Spot Location 1/4 1/4 1/4 1/4	Feet From Quarter Section Lines FSL FWL		
Depth of Deviation	Radius of Turn	Direction	Total Length
Measured Total Depth	True Vertical Depth	End Pt Location From Lease, Unit or Property Line:	