

API NO. 35-149-21462
 OTC PROD. UNIT NO. 149-203619

PLEASE TYPE OR USE BLACK INK ONLY
 NOTE: A
 Attach copy of original 1002A if recompletion or reentry.

OKLAHOMA CORPORATION COMMISSION
 Oil & Gas Conservation Division
 Post Office Box 52000
 Oklahoma City, Oklahoma 73152-2000
 Rule 165:10-3-25

621709

Form 1002A
 Rev. 2009

003042026

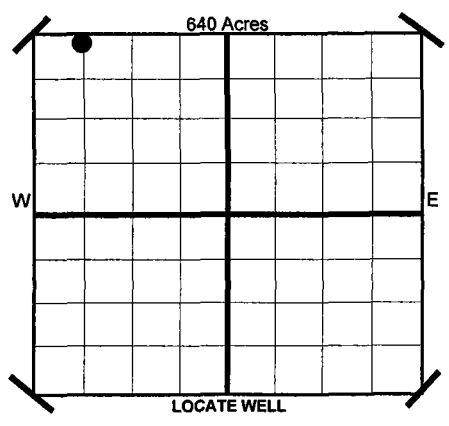
ORIGINAL
 AMENDED
 Reason Amended

COMPLETION REPORT

TYPE OF DRILLING OPERATION
 STRAIGHT HOLE DIRECTIONAL HOLE HORIZONTAL HOLE
 If directional or horizontal, see reverse for bottom hole location.

SPUD DATE 11/7/2009
 DRLG FINISHED DATE 12/31/2009
 DATE OF WELL COMPLETION 2/12/2010
 1ST PROD DATE 1/27/2010
 RECOMP DATE -
 Longitude (if Known) -

COUNTY WASHITA SEC 18 TWP 11N RGE 18W
 LEASE NAME MELVIN WELL NO 1-18H
 SHL N/2 1/4 N/2 1/4 NW 1/4 NW 1/4 FSL 2390 FWL OF 1/4 SEC 660
 ELEVATION Derrick Ft 1804 Ground 1773 Latitude (if Known) - Longitude (if Known) -
 OPERATOR NAME CHESAPEAKE OPERATING, INC. OTC/OCC OPERATOR NO. 17441
 ADDRESS P.O. BOX 18496
 CITY OKLAHOMA CITY STATE OK ZIP 73154



COMPLETION TYPE
 SINGLE ZONE
 MULTIPLE ZONE Application Date -
 COMMINGLED Application Date -
 LOCATION S 12681, 571219
 EXCEPTION ORDER NO.
 INCREASED DENSITY ORDER NO. N/A

CASING & CEMENT (Form 1002C must be attached)

TYPE	SIZE	WEIGHT	GRADE	FEET	PSI	SAX	TOP	
CONDUCTOR								
SURFACE	9 5/8"	40#	J-55	1,521.00		620	SURFACE	
INTERMEDIATE	7"	26#	P-110	12,180'		580	8,900'	
PRODUCTION	4 1/2"	13.5#	P-110	16,920'		590	11,800'	
LINER								
							TOTAL DEPTH	16,921'

PACKER @ _____ BRAND & TYPE _____
 PLUG @ _____ TYPE _____ PLUG @ _____ TYPE _____

COMPLETION & TEST DATA BY PRODUCING FORMATION
404 DMINGIN

FORMATION	13660-13661	14980-14981	16300-16301
DES MOINES GRANITE WASH	13770-13771	15092-15093	16430-16431
SPACING & SPACING ORDER NUMBER	640 281578	13878-13879 13990-13991	15200-15201 15320-15321
CLASS: Oil, Gas, Dry, Inj, Disp, Comrn Disp, Svc	GAS	14100-14102 14210-14212	15420-15422 15530-15532
PERFORATED INTERVALS	13012-13013 13110-13111 13242-13243 13330-13331 13436-13438 13550-13552	14320-14321 14434-14435 14530-14531 14650-14651 14760-14761 14870-14871	15640-15641 15750-15751 15860-15861 15970-15971 16080-16082 16180-16182
ACID/VOLUME	-		
FRACTURE TREATMENT (Fluids/Prop Amounts)	Frac w/ 61,283 bbbls Slickwater & 1,723,147# Proppant		

Minimum Gas Allowable (165:10-17-7) OR Gas Purchaser/Measurer _____
 Oil Allowable (165:10-13-3) _____ 1st Sales Date _____

INITIAL TEST DATA

INITIAL TEST DATE	2/12/2010
OIL-BBL/DAY	299
OIL-GRAVITY (API)	53
GAS-MCF/DAY	6,158
GAS-OIL RATIO CU FT/BBL	20,595
WATER-BBL/DAY	441
PUMPING OR FLOWING	FLOWING
INITIAL SHUT-IN PRESSURE	SICP 3750#
CHOKE SIZE	20/64
FLOW TUBING PRESSURE	4248# FCP

A record of the formations drilled through, and pertinent remarks are presented on the reverse. I declare that I have knowledge of the contents of this report and am authorized by my organization to make this report, which was prepared by me or under my supervision and direction, with the data and facts stated herein to be true, correct, and complete to the best of my knowledge and belief.

Michael Park SIGNATURE MICHAEL PARK - DISTRICT MANAGER 3/1/2010 DATE 405-848-8000 PHONE NUMBER
 P.O. BOX 18496 OKLAHOMA CITY OK 73154 ADDRESS CITY STATE ZIP
 EMAIL ADDRESS _____

PLEASE TYPE OR USE BLACK INK ONLY
FORMATION RECORD

Give formation names and tops, if available, or descriptions and thickness of formations drilled through. Show intervals cored or drillstem tested.

LEASE NAME MELVIN

WELL NO. 1-18H

NAMES OF FORMATIONS	TOP
DES MOINES	12,447'

FOR COMMISSION USE ONLY

ITD on file YES NO

APPROVED HC DISAPPROVED _____

2) Reject Codes _____

3-8-10

Were open hole logs run? yes no

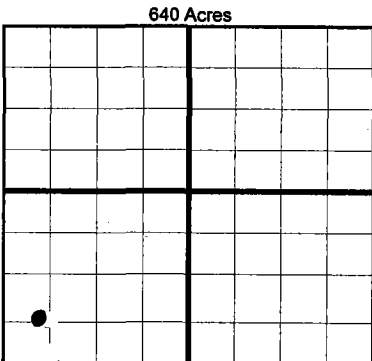
Date last log was run 11/19/2009

Was CO₂ encountered? yes no at what depths?

Was H₂S encountered? yes no at what depths?

Were unusual drilling circumstances encountered? yes no
If yes, briefly explain.

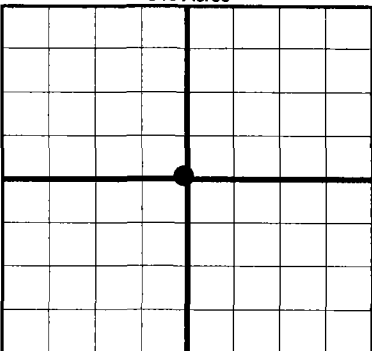
Other remarks:



If more than three drainholes are proposed, attach a separate sheet indicating the necessary information.

Direction must be stated in degrees azimuth. Please note, the horizontal drainhole and its end point must be located within the boundaries of the lease or spacing unit.

Directional surveys are required for all drainholes and directional wells.
640 Acres



BOTTOM HOLE LOCATION FOR DIRECTIONAL HOLE

SEC	TWP	RGE	COUNTY							
Spot Location				1/4	1/4	1/4	1/4	Feet From 1/4 Sec Lines	FSL	FWL
Measured Total Depth				True Vertical Depth		BHL From Lease, Unit, or Property Line:				

BOTTOM HOLE LOCATION FOR HORIZONTAL HOLE: (LATERALS)

SEC	TWP	RGE	COUNTY							
18	11N	18W	WASHITA							
Spot Location				SE 1/4	NW 1/4	SW 1/4	SW 1/4	Feet From 1/4 Sec Lines	FSL 705'	FWL 579'
Depth of Deviation				12,280'		Radius of Turn 403		Direction 180		Total Length 4,465'
Measured Total Depth				16,921'		True Vertical Depth 12,629'		BHL From Lease, Unit, or Property Line: 579'		

LATERAL #2

SEC	TWP	RGE	COUNTY							
Spot Location				1/4	1/4	1/4	1/4	Feet From 1/4 Sec Lines	FSL	FWL
Depth of Deviation				Radius of Turn		Direction		Total Length		
Measured Total Depth				True Vertical Depth		BHL From Lease, Unit, or Property Line:				

LATERAL #3

SEC	TWP	RGE	COUNTY							
Spot Location				1/4	1/4	1/4	1/4	Feet From 1/4 Sec Lines	FSL	FWL
Depth of Deviation				Radius of Turn		Direction		Total Length		
Measured Total Depth				True Vertical Depth		BHL From Lease, Unit, or Property Line:				