

11/8/14



Newfield Exploration Mid-Continent

Gilmore 1H-14X

14&23-5N-10E

Hughes County, OK

ATTRIBUTE MAP

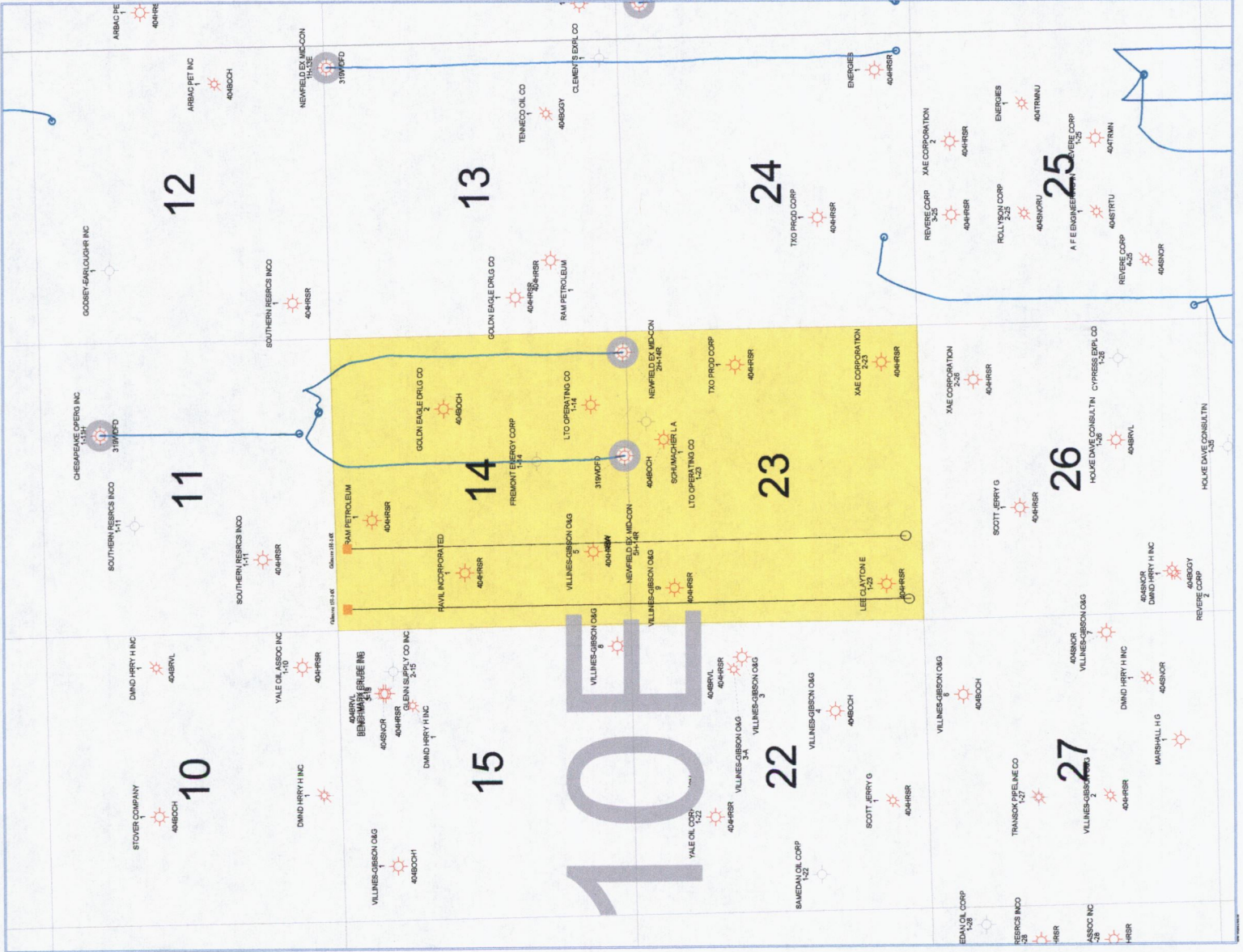
- Hunton Oil
- Hunton Gas
- Mississippi Oil
- Mississippi Gas
- Woodford Oil
- Woodford Gas
- Manning Oil
- Manning Gas
- Chester Oil
- Chester Gas
- Springer Oil
- Springer Gas
- Osborn Oil
- Osborn Gas
- Commingled Oil
- Commingled Gas

- Well Symbols
- Oil Well
- Gas Well
- Produced Gas Well
- Temporary Production

REMARKS

- CD# 2016-4688-T MUH
- CD# 2016-4689-T LE
- CD# 2016-4690-T ID
- CD# 2016-4691-T SA
- CD# 2016-4692-T ID
- CD# 2016-4693-T SA
- CD# 2016-4694-T MUH
- CD# 2016-4695-T LE

November 7, 2014



10E

VOLUMETRIC SUMMARY

NEWFIELD EXPLORATION MID-CONTINENT INC.

CD# 2016-4690-T (Increased Density -- 1 additional well)

Location: 14-5N-10E, Hughes County, OK

<u>RESERVOIR</u>		<u>Recoverable Gas or Oil In Place</u>	<u>Total Recovery from Existing Wells</u>	<u>Unrecoverable Gas or Oil Under Sect.</u>
Woodford	Gas (BCF)	12.54	7.04	5.50
	Oil (MBO)	627	0	627

EUR of Existing Wells

<u>WELL</u>	<u>RESERVOIR</u>	<u>Gas (BCF)</u>	<u>Oil (MBO)</u>
Woodruff 2H-14R	Woodford	3.65	0
Woodruff 5H-14R	Woodford	3.39	0

CD# 2016-4690-T (Increased Density -- 1 additional well)

Gas Volumetric Calculation -- Hughes Co., Oklahoma Woodford Shale

Location: 14-5N-10E, Hughes County, OK

Zone: **Woodford**

Avg. Surf. Temp:	60	deg F
Temp Gradient:	1.275	deg F/100 feet
Press. Gradient:	0.6726	
Depth (midpoint):	5,838	
Gas Gravity	0.68	
% N2	1.00	%
% CO2	2.00	%
% H2S	0.00	%
Condensate (Yes=1)	1	
Res. Temperature	134	F
Initial Pressure	3,926	Psia
Net Pay	175	Feet
Acres	640	Acres
Water Sat	24.00	%
Porosity	5.00	%
Optional ** Recovery	22.00%	

Free Gas In Place	48,878,455 Mcf	436.4 MCF/Ac-Ft
Adsorbed Gas In Place	8,131,579	
Total Gas In Place	57,010,034	
Recoverable Gas	12,542,207 Mcf	112.0 MCF/Ac-Ft
Recoverable Oil	627,110 bbl	at 50 bbl/MMCF yield

PRODUCTION FORECASTS FOR SEPARATE ALLOWABLES
NEWFIELD EXPLORATION MID-CONTINENT

CD# 2016-4691-T

Section 14-5N-10E

Hughes Co.

Existing Well (sets the unit allowable)

Expected Production Rate (MCFD)

Woodruff 2H-14R (producing)

2210 MCFD

14-5N-10E

Woodruff 5H-14R (producing)

2533 MCFD

14-5N-10E

Expected Initial Rates of Proposed Wells

Proposed Additional Wells

Expected Production

Requested Allowables

Gilmore 1H-14X (50% in Sec. 14)

9396 MCFD

Separate, minimum, or per test