

Final Location Exception Exhibit
XTO Holden 1-15H10
Section 10, T7S, R1E
Love County, Oklahoma

Surface Location: 215' FNL & 1,150' FWL of section 15, T7S, R1E

Woodford entry: 14,618' MD at 448' FSL & 398' FWL of section 10
14,372' TVD

Heel Perforation: 14,729' MD at 563' FSL & 397' FWL of section 10
14,401' TVD

Toe Perforation: 18,960' MD at 498' FNL & 398' FWL of section 10
14,287' TVD

Bottom Location: 19,064' MD at 394' FNL & 399' FWL of section 10
14,287' TVD

Engineer: Sam Abrams 07/16/2014

Geologist: Michael Sweatt 07/16/2014



201307922

JUL 31 2014

Holden 1-15H10

Final



XTO Energy
Holden 1-15H10 -7S-1E
Love County, OK, NAD27 / Grid N



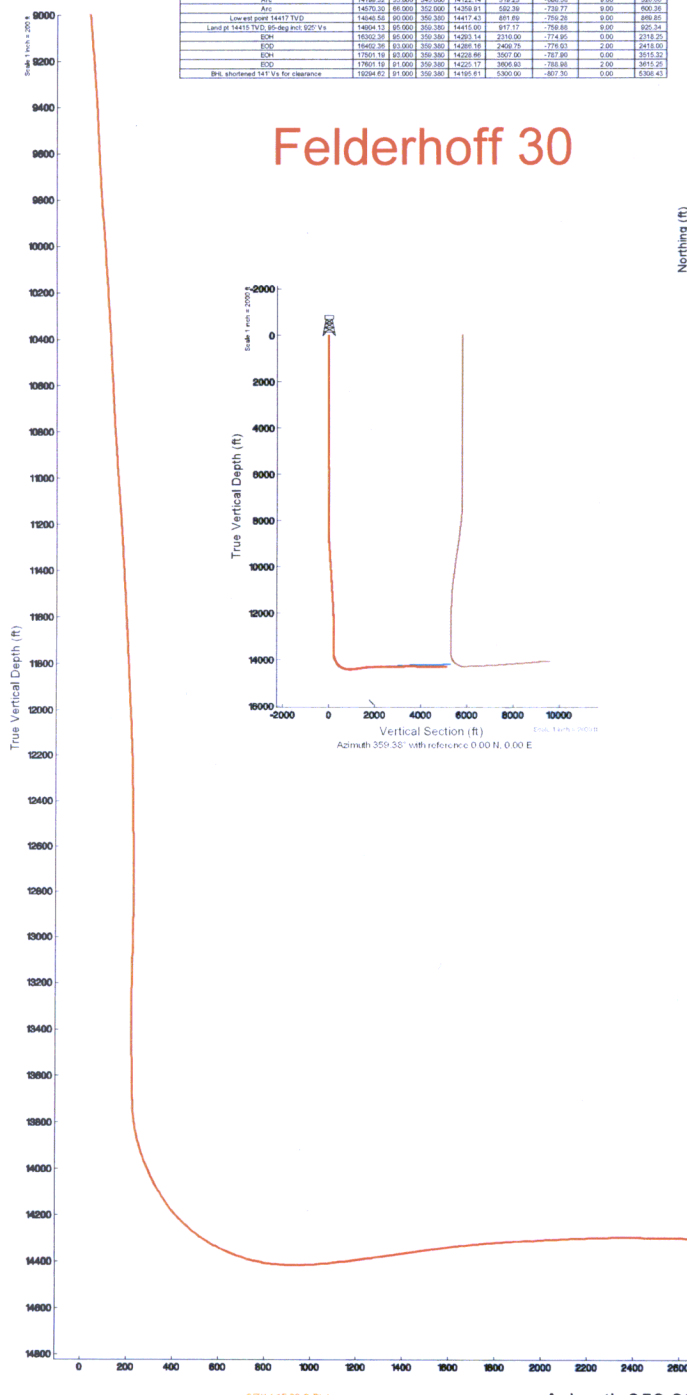
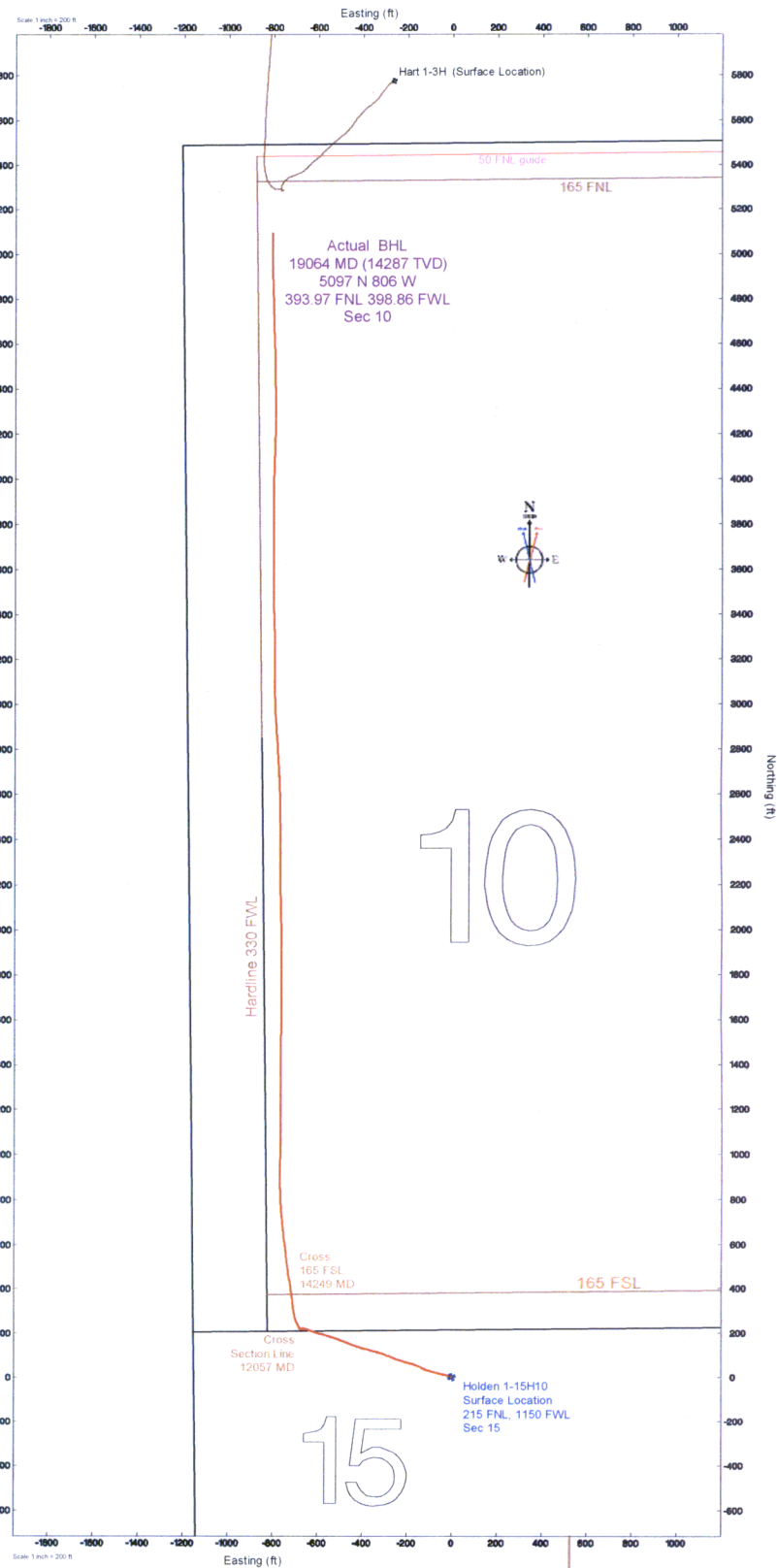
Targets							
ID	MD (ft)	MD (ft)	MD (ft)	MD (ft)	MD (ft)	MD (ft)	MD (ft)
19064 MD	19064	19064	19064	19064	19064	19064	19064
5097 N 806 W	5097	5097	5097	5097	5097	5097	5097
393.97 FNL	393.97	393.97	393.97	393.97	393.97	393.97	393.97
398.86 FWL	398.86	398.86	398.86	398.86	398.86	398.86	398.86
Sec 10							

Tie-On Position							
MD (ft)	MD (ft)	MD (ft)	MD (ft)	MD (ft)	MD (ft)	MD (ft)	MD (ft)
29.00	0.00	288.382	28.00	0.00	0.00	2245154.26	228515.63

Location Information							
Facility Name	Grid East (U.S. Ft)	Grid North (U.S. Ft)	Latitude	Longitude	Grid East (U.S. Ft)	Grid North (U.S. Ft)	Latitude
Holden 1-15H10 -7S-1E	2245154.26	228515.63	33°57'15.64"N	97°11'29.49"W			
Holden 1-15H10 (Felderhoff 30)							
Felderhoff 30 (RT) to Mainline (AT Site Holden 1-15H10) (Felderhoff 30)							
Felderhoff 30 (RT) to Mainline (AT Site Holden 1-15H10) (Felderhoff 30)							
Felderhoff 30 (RT) to Mainline (AT Site Holden 1-15H10) (Felderhoff 30)							

Bottom Hole Location							
MD (ft)	MD (ft)	MD (ft)	MD (ft)	MD (ft)	MD (ft)	MD (ft)	MD (ft)
29.00	0.00	288.382	28.00	0.00	0.00	2245154.26	228515.63

Well Profile Data								
MD (ft)	MD (ft)	MD (ft)	MD (ft)	MD (ft)	MD (ft)	MD (ft)	MD (ft)	
29.00	0.00	288.382	28.00	0.00	0.00	0.00	0.00	
7929.90	0.00	288.382	7929.90	0.00	0.00	0.00	0.00	
8429.33	19.007	288.382	8429.33	13.74	+41.56	2.00	14.53	
11601.62	19.007	288.382	11601.62	182.51	-576.29	0.00	186.78	
12952.25	0.001	0.001	12952.25	229.00	-862.00	1.00	227.33	
13032.67	0.001	0.001	13032.67	229.00	-862.00	0.00	227.17	
14199.32	33.003	345.000	14199.32	339.23	-888.58	0.00	320.69	
14575.26	66.006	355.000	14575.26	359.39	-759.77	0.00	309.28	
14848.58	99.009	356.380	14848.58	381.89	-759.29	0.00	299.85	
14924.13	95.003	356.380	14924.13	445.00	-817.17	0.00	326.34	
15002.26	85.000	356.380	15002.26	2116.00	-174.95	0.00	2116.25	
16002.26	85.000	356.380	16002.26	1426.75	-278.51	2.00	2418.00	
17001.18	83.000	356.380	17001.18	1426.88	-307.00	-787.90	2.00	2615.32
17001.18	81.000	356.380	17001.18	1422.17	-306.60	-788.98	2.00	2615.25
17001.18	81.000	356.380	17001.18	1419.41	-300.00	-807.30	0.00	2536.43



Felderhoff 30

10

15

37714 15.30 C. Rickey
Azimuth 359.38° with reference 0.00 N, 0.00 E

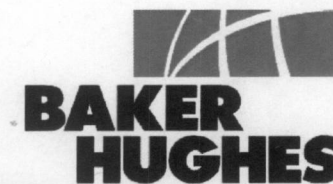
Actual BHL
19064 MD (14287 TVD)
5097 N 806 W
393.97 FNL 398.86 FWL
Sec 10

Actual BHL
19064 MD (14287 TVD)
Vert. sec. = 5105' Vs



Actual Wellpath Report

Holden 1-15H10 actual svy - final (TD @ 19064 md)
Page 1 of 8



REFERENCE WELLPATH IDENTIFICATION

Operator	XTO Energy	Slot	Holden 1-15H10 (Felderhoff 30)
Area	Oklahoma	Well	SL 215 FNL, 1150 FWL Sec 15
Field	Love County, OK (XTO) NAD27 / Grid N	Wellbore	Actual Holden 1-15H10
Facility	Holden 1-15H10 -7S-1E		

REPORT SETUP INFORMATION

Projection System	NAD27 / Lambert Oklahoma SP, Southern Zone (3502), US feet	Software System	WellArchitect® 4.0.0
North Reference	Grid	User	Rickchra
Scale	0.999996	Report Generated	07/Mar/2014 at 15:27
Convergence at slot	0.46° East	Database/Source file	WellArchitect_Full/Actual_Holden_1-15H10.xml

WELLPATH LOCATION

	Local coordinates		Grid coordinates		Geographic coordinates	
	North[ft]	East[ft]	Easting[US ft]	Northing[US ft]	Latitude	Longitude
Slot Location	0.00	0.00	2245184.26	226915.83	33°57'15.045"N	97°11'29.456"W
Facility Reference Pt			2245184.26	226915.83	33°57'15.045"N	97°11'29.456"W
Field Reference Pt			2241902.36	316347.47	34°12'00.000"N	97°12'00.000"W

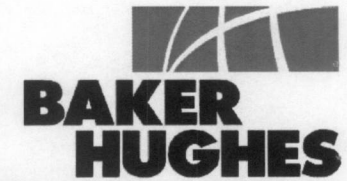
WELLPATH DATUM

Calculation method	Minimum curvature	Felderhoff 30 (RT) to Facility Vertical Datum	26.00ft
Horizontal Reference Pt	Slot	Felderhoff 30 (RT) to Mean Sea Level	896.00ft
Vertical Reference Pt	Felderhoff 30 (RT)	Felderhoff 30 (RT) to Mud Line at Slot (Holden 1-15H10 (Felderhoff 30))	26.00ft
MD Reference Pt	Felderhoff 30 (RT)	Section Origin	N 0.00, E 0.00 ft
Field Vertical Reference	Mean Sea Level	Section Azimuth	359.38°



Actual Wellpath Report

Holden 1-15H10 actual svy - final (TD @ 19064 md)
Page 2 of 8



REFERENCE WELLPATH IDENTIFICATION

Operator	XTO Energy	Slot	Holden 1-15H10 (Felderhoff 30)
Area	Oklahoma	Well	SL 215 FNL, 1150 FWL Sec 15
Field	Love County, OK (XTO) NAD27 / Grid N	Wellbore	Actual Holden 1-15H10
Facility	Holden 1-15H10 -7S-1E		

WELLPATH DATA (231 stations) † = interpolated/extrapolated station

MD [ft]	Inclination [°]	Azimuth [°]	TVD [ft]	Vert Sect [ft]	North [ft]	East [ft]	Grid East [US ft]	Grid North [US ft]	DLS [°/100ft]	Comments
0.00†	0.000	253.640	0.00	0.00	0.00	0.00	2245184.26	226915.83	0.00	SL (215 FNL 1150 FWL) Sec 15
26.00	0.000	253.640	26.00	0.00	0.00	0.00	2245184.26	226915.83	0.00	
296.00	0.280	253.640	296.00	-0.18	-0.19	-0.63	2245183.63	226915.64	0.10	
388.00	0.290	292.860	388.00	-0.15	-0.16	-1.06	2245183.20	226915.67	0.21	
480.00	0.340	352.020	480.00	0.22	0.20	-1.32	2245182.94	226916.03	0.34	
572.00	0.180	303.100	572.00	0.57	0.55	-1.47	2245182.79	226916.38	0.28	
664.00	0.150	340.700	664.00	0.76	0.74	-1.64	2245182.62	226916.57	0.12	
756.00	0.360	42.070	755.99	1.09	1.07	-1.48	2245182.78	226916.90	0.34	
848.00	0.410	325.280	847.99	1.57	1.56	-1.48	2245182.78	226917.39	0.52	
940.00	0.130	326.600	939.99	1.93	1.91	-1.72	2245182.54	226917.74	0.30	
1033.00	0.380	24.540	1032.99	2.30	2.28	-1.65	2245182.61	226918.11	0.35	
1124.00	0.240	24.750	1123.99	2.75	2.73	-1.45	2245182.81	226918.56	0.15	
1217.00	0.190	359.020	1216.99	3.08	3.06	-1.37	2245182.89	226918.89	0.12	
1309.00	0.330	31.800	1308.99	3.45	3.44	-1.23	2245183.03	226919.27	0.22	
1401.00	0.070	24.490	1400.99	3.73	3.72	-1.07	2245183.19	226919.55	0.28	
1493.00	0.140	25.230	1492.99	3.88	3.87	-1.00	2245183.26	226919.70	0.08	
1585.00	0.250	77.320	1584.99	4.02	4.01	-0.75	2245183.51	226919.84	0.21	
1678.00	0.100	73.000	1677.99	4.09	4.08	-0.48	2245183.78	226919.91	0.16	
1774.00	0.270	61.260	1773.99	4.22	4.22	-0.20	2245184.06	226920.05	0.18	
1869.00	0.170	27.410	1868.99	4.45	4.45	0.06	2245184.32	226920.28	0.17	
1928.00	0.220	40.870	1927.98	4.61	4.61	0.18	2245184.44	226920.44	0.11	
1998.00	0.040	285.650	1997.98	4.72	4.72	0.24	2245184.50	226920.55	0.34	
2093.00	0.060	295.920	2092.98	4.75	4.75	0.17	2245184.43	226920.58	0.02	
2188.00	0.150	92.740	2187.98	4.76	4.77	0.25	2245184.51	226920.60	0.22	
2283.00	0.030	200.840	2282.98	4.73	4.74	0.36	2245184.62	226920.57	0.17	
2378.00	0.190	189.660	2377.98	4.56	4.56	0.33	2245184.59	226920.39	0.17	
2473.00	0.120	13.160	2472.98	4.50	4.50	0.32	2245184.58	226920.33	0.33	
2568.00	0.310	146.130	2567.98	4.38	4.38	0.49	2245184.75	226920.21	0.42	
2663.00	0.070	52.730	2662.98	4.20	4.21	0.68	2245184.94	226920.04	0.34	
2758.00	0.070	148.240	2757.98	4.18	4.19	0.75	2245185.01	226920.02	0.11	
2854.00	0.260	118.080	2853.98	4.03	4.04	0.98	2245185.24	226919.87	0.21	
2949.00	0.140	343.500	2948.98	4.04	4.05	1.13	2245185.39	226919.88	0.39	

3044.00	0.250	208.720	3043.98	3.97	3.98	1.00	2245185.26	226919.81	0.38
3139.00	0.190	69.990	3138.98	3.84	3.85	1.05	2245185.31	226919.68	0.43
3234.00	0.290	93.680	3233.98	3.87	3.89	1.44	2245185.70	226919.72	0.15
3328.00	0.390	70.310	3327.98	3.96	3.98	1.98	2245186.24	226919.81	0.18
3424.00	0.090	181.260	3423.98	3.99	4.02	2.28	2245186.54	226919.85	0.45
3519.00	0.280	157.200	3518.98	3.70	3.73	2.37	2245186.63	226919.56	0.21
3614.00	0.270	177.330	3613.98	3.26	3.29	2.47	2245186.73	226919.12	0.10
3709.00	0.220	353.330	3708.98	3.22	3.25	2.46	2245186.72	226919.08	0.52
3804.00	0.070	346.040	3803.98	3.46	3.49	2.42	2245186.68	226919.32	0.16
3899.00	0.220	139.760	3898.98	3.38	3.40	2.53	2245186.79	226919.23	0.30
3994.00	0.190	38.040	3993.98	3.36	3.39	2.74	2245187.00	226919.22	0.34
4089.00	0.170	194.970	4088.98	3.34	3.38	2.80	2245187.06	226919.21	0.37
4184.00	0.150	320.840	4183.98	3.31	3.34	2.69	2245186.95	226919.17	0.30



Actual Wellpath Report

Holden 1-15H10 actual svy - final (TD @ 19064 md)
Page 3 of 8



REFERENCE WELLPATH IDENTIFICATION

Operator	XTO Energy	Slot	Holden 1-15H10 (Felderhoff 30)
Area	Oklahoma	Well	SL 215 FNL, 1150 FWL Sec 15
Field	Love County, OK (XTO) NAD27 / Grid N	Wellbore	Actual Holden 1-15H10
Facility	Holden 1-15H10 -7S-1E		

WELLPATH DATA (231 stations)

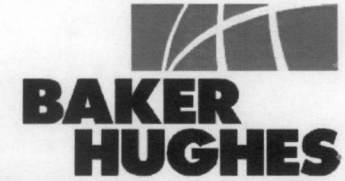
MD [ft]	Inclination [°]	Azimuth [°]	TVD [ft]	Vert Sect [ft]	North [ft]	East [ft]	Grid East [US ft]	Grid North [US ft]	DLS [°/100ft]	Comments
4279.00	0.340	327.860	4278.97	3.64	3.67	2.46	2245186.72	226919.50	0.20	
4374.00	0.030	229.190	4373.97	3.87	3.89	2.29	2245186.55	226919.72	0.36	
4469.00	0.220	353.990	4468.97	4.03	4.06	2.25	2245186.51	226919.89	0.25	
4564.00	0.220	216.880	4563.97	4.07	4.09	2.13	2245186.39	226919.92	0.43	
4659.00	0.120	254.350	4658.97	3.90	3.92	1.92	2245186.18	226919.75	0.15	
4754.00	0.110	179.190	4753.97	3.78	3.80	1.83	2245186.09	226919.63	0.15	
4849.00	0.310	273.870	4848.97	3.71	3.73	1.57	2245185.83	226919.56	0.36	
4944.00	0.420	345.720	4943.97	4.07	4.08	1.23	2245185.49	226919.91	0.46	
5039.00	0.460	293.970	5038.97	4.57	4.58	0.79	2245185.05	226920.41	0.41	
5134.00	0.380	293.440	5133.97	4.85	4.86	0.16	2245184.42	226920.69	0.08	
5229.00	0.220	254.290	5228.96	4.94	4.93	-0.31	2245183.95	226920.76	0.26	
5324.00	0.090	311.200	5323.96	4.94	4.93	-0.54	2245183.72	226920.76	0.20	
5419.00	0.070	220.960	5418.96	4.94	4.94	-0.63	2245183.63	226920.77	0.12	
5515.00	0.160	316.840	5514.96	5.00	4.99	-0.76	2245183.50	226920.82	0.19	
5610.00	0.100	317.070	5609.96	5.16	5.15	-0.91	2245183.35	226920.98	0.06	
5705.00	0.130	356.230	5704.96	5.33	5.32	-0.97	2245183.29	226921.15	0.09	
5800.00	0.070	338.750	5799.96	5.49	5.48	-1.00	2245183.26	226921.31	0.07	
5895.00	0.370	323.560	5894.96	5.79	5.78	-1.21	2245183.05	226921.61	0.32	
5990.00	0.520	284.800	5989.96	6.16	6.14	-1.81	2245182.45	226921.97	0.34	
6085.00	0.350	281.300	6084.96	6.33	6.30	-2.51	2245181.75	226922.13	0.18	
6180.00	0.120	260.000	6179.96	6.37	6.34	-2.89	2245181.37	226922.17	0.25	
6275.00	0.430	269.670	6274.96	6.36	6.32	-3.34	2245180.92	226922.15	0.33	
6370.00	0.470	292.670	6369.95	6.52	6.47	-4.06	2245180.20	226922.30	0.19	
6465.00	0.380	280.830	6464.95	6.73	6.68	-4.73	2245179.53	226922.51	0.13	
6560.00	0.190	303.460	6559.95	6.88	6.83	-5.17	2245179.09	226922.66	0.23	
6655.00	0.200	325.570	6654.95	7.11	7.05	-5.39	2245178.87	226922.88	0.08	
6750.00	0.170	115.990	6749.95	7.18	7.13	-5.36	2245178.90	226922.96	0.38	
6845.00	0.110	259.910	6844.95	7.11	7.05	-5.32	2245178.94	226922.88	0.28	
6941.00	0.430	305.690	6940.95	7.30	7.24	-5.71	2245178.55	226923.07	0.38	
7036.00	0.100	285.630	7035.95	7.54	7.47	-6.08	2245178.18	226923.30	0.36	
7131.00	0.170	250.030	7130.95	7.51	7.45	-6.29	2245177.97	226923.28	0.11	
7226.00	0.190	220.510	7225.94	7.35	7.28	-6.52	2245177.74	226923.11	0.10	

7321.00	0.140	220.170	7320.94	7.14	7.07	-6.70	2245177.56	226922.90	0.05
7416.00	0.110	313.620	7415.94	7.12	7.04	-6.84	2245177.42	226922.87	0.19
7511.00	0.270	301.100	7510.94	7.30	7.22	-7.10	2245177.16	226923.05	0.17
7606.00	0.070	295.340	7605.94	7.44	7.36	-7.34	2245176.92	226923.19	0.21
7701.00	0.090	155.670	7700.94	7.40	7.32	-7.37	2245176.89	226923.15	0.16
7796.00	0.700	235.730	7795.94	7.01	6.93	-7.81	2245176.45	226922.76	0.73
7891.00	0.330	256.210	7890.94	6.63	6.53	-8.56	2245175.70	226922.36	0.43
7986.00	0.230	288.080	7985.94	6.62	6.53	-9.01	2245175.25	226922.36	0.19
8081.00	0.970	271.950	8080.93	6.72	6.61	-9.99	2245174.27	226922.44	0.79
8176.00	2.460	282.650	8175.88	7.23	7.09	-12.78	2245171.48	226922.92	1.60
8271.00	3.550	280.400	8270.75	8.26	8.07	-17.67	2245166.59	226923.90	1.15
8366.00	4.200	282.500	8365.54	9.61	9.35	-23.96	2245160.30	226925.18	0.70
8462.00	5.370	279.490	8461.20	11.19	10.85	-31.82	2245152.44	226926.68	1.25



Actual Wellpath Report

Holden 1-15H10 actual svy - final (TD @ 19064 md)
Page 4 of 8



REFERENCE WELLPATH IDENTIFICATION

Operator	XTO Energy	Slot	Holden 1-15H10 (Felderhoff 30)
Area	Oklahoma	Well	SL 215 FNL, 1150 FWL Sec 15
Field	Love County, OK (XTO) NAD27 / Grid N	Wellbore	Actual Holden 1-15H10
Facility	Holden 1-15H10 -7S-1E		

WELLPATH DATA (231 stations) † = interpolated/extrapolated station

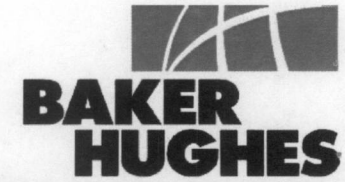
MD [ft]	Inclination [°]	Azimuth [°]	TVD [ft]	Vert Sect [ft]	North [ft]	East [ft]	Grid East [US ft]	Grid North [US ft]	DLS [°/100ft]	Comments
8556.00	7.350	283.020	8554.62	13.38	12.93	-42.02	2245142.24	226928.76	2.15	
8652.00	9.280	284.760	8649.60	16.89	16.29	-55.49	2245128.77	226932.12	2.03	
8747.00	10.410	284.280	8743.20	21.12	20.36	-71.21	2245113.05	226936.19	1.19	
8842.00	10.820	286.430	8836.58	25.95	24.99	-88.08	2245096.18	226940.82	0.60	
8937.00	10.310	288.730	8929.97	31.38	30.25	-104.69	2245079.57	226946.08	0.70	
9032.00	10.390	295.400	9023.42	37.95	36.65	-120.48	2245063.78	226952.48	1.26	
9127.00	10.320	296.190	9116.88	45.55	44.08	-135.85	2245048.41	226959.91	0.17	
9222.00	10.450	294.570	9210.32	53.05	51.42	-151.32	2245032.94	226967.25	0.34	
9317.00	10.590	288.800	9303.73	59.62	57.81	-167.42	2245016.84	226973.64	1.12	
9412.00	10.170	286.790	9397.17	65.03	63.05	-183.71	2245000.55	226978.88	0.58	
9507.00	10.190	286.720	9490.68	70.05	67.89	-199.79	2244984.47	226983.72	0.02	
9602.00	10.430	287.200	9584.14	75.19	72.85	-216.05	2244968.21	226988.68	0.27	
9697.00	10.130	286.790	9677.62	80.32	77.81	-232.27	2244951.99	226993.64	0.33	
9792.00	10.390	287.620	9771.10	85.50	82.81	-248.43	2244935.83	226998.64	0.31	
9887.00	10.470	296.110	9864.53	92.06	89.21	-264.35	2244919.91	227005.04	1.62	
9990.00	10.270	291.020	9965.85	99.66	96.62	-281.32	2244902.94	227012.45	0.91	
10086.00	10.770	292.740	10060.24	106.37	103.16	-297.58	2244886.68	227018.98	0.61	
10181.00	10.790	287.070	10153.57	112.59	109.20	-314.27	2244869.99	227025.03	1.12	
10276.00	10.790	284.980	10246.89	117.68	114.11	-331.36	2244852.90	227029.94	0.41	
10371.00	11.270	285.390	10340.13	122.64	118.87	-348.90	2244835.36	227034.70	0.51	
10466.00	10.260	285.690	10433.46	127.57	123.62	-366.00	2244818.26	227039.45	1.06	
10561.00	10.160	285.300	10526.95	132.25	128.12	-382.22	2244802.04	227043.95	0.13	
10656.00	10.170	287.680	10620.46	137.18	132.88	-398.30	2244785.96	227048.71	0.44	
10751.00	10.080	288.430	10713.98	142.53	138.05	-414.18	2244770.09	227053.88	0.17	
10846.00	10.180	288.070	10807.50	147.93	143.28	-430.04	2244754.22	227059.11	0.12	
10941.00	10.150	290.440	10901.01	153.63	148.81	-445.87	2244738.39	227064.64	0.44	
11036.00	10.320	290.570	10994.50	159.71	154.73	-461.68	2244722.58	227070.55	0.18	
11131.00	10.110	292.050	11088.00	166.00	160.85	-477.37	2244706.89	227076.67	0.35	
11226.00	10.060	294.520	11181.53	172.74	167.42	-492.65	2244691.61	227083.25	0.46	
11321.00	9.730	291.200	11275.12	179.25	173.77	-507.69	2244676.58	227089.59	0.69	
11416.00	10.060	286.350	11368.70	184.65	179.00	-523.13	2244661.13	227094.83	0.94	
11512.00	9.880	286.570	11463.25	189.54	183.71	-539.07	2244645.19	227099.54	0.19	

11607.00	9.840	286.720	11556.85	194.36	188.37	-554.66	2244629.61	227104.20	0.05	
11702.00	9.840	286.250	11650.45	199.14	192.98	-570.23	2244614.04	227108.81	0.08	
11797.00	9.930	286.340	11744.04	203.88	197.56	-585.88	2244598.38	227113.38	0.10	
11892.00	8.920	287.600	11837.76	208.58	202.09	-600.76	2244583.50	227117.92	1.09	
11987.00	8.050	288.910	11931.72	213.10	206.47	-614.07	2244570.19	227122.30	0.94	
12057.38†	7.161	288.513	12001.48	216.19	209.46	-622.90	2244561.37	227125.29	1.27	Cross Section 10 South Line
12082.00	6.850	288.350	12025.91	217.17	210.41	-625.74	2244558.52	227126.24	1.27	
12178.00	5.950	287.350	12121.32	220.56	213.70	-635.93	2244548.34	227129.52	0.94	
12273.00	5.500	287.390	12215.84	223.49	216.53	-644.97	2244539.29	227132.35	0.47	
12368.00	3.610	282.830	12310.54	225.60	218.55	-652.23	2244532.03	227134.38	2.02	
12414.00	3.610	280.360	12356.45	226.21	219.13	-655.07	2244529.19	227134.96	0.34	
12494.00	2.360	290.180	12436.34	227.27	220.15	-659.09	2244525.17	227135.98	1.68	
12558.00	1.230	301.690	12500.30	228.11	220.97	-660.92	2244523.35	227136.80	1.84	



Actual Wellpath Report

Holden 1-15H10 actual svy - final (TD @ 19064 md)
Page 5 of 8



REFERENCE WELLPATH IDENTIFICATION

Operator	XTO Energy	Slot	Holden 1-15H10 (Felderhoff 30)
Area	Oklahoma	Well	SL 215 FNL, 1150 FWL Sec 15
Field	Love County, OK (XTO) NAD27 / Grid N	Wellbore	Actual Holden 1-15H10
Facility	Holden 1-15H10 -7S-1E		

WELLPATH DATA (231 stations) † = interpolated/extrapolated station

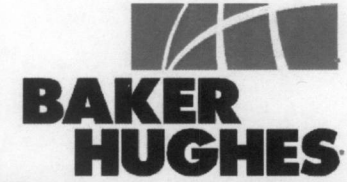
MD [ft]	Inclination [°]	Azimuth [°]	TVD [ft]	Vert Sect [ft]	North [ft]	East [ft]	Grid East [US ft]	Grid North [US ft]	DLS [°/100ft]	Comments
12652.00	0.740	3.410	12594.29	229.25	222.10	-661.74	2244522.53	227137.93	1.16	
12747.00	0.470	76.290	12689.29	229.95	222.81	-661.32	2244522.94	227138.64	0.79	
12842.00	0.620	124.950	12784.28	229.74	222.61	-660.52	2244523.74	227138.44	0.49	
12937.00	0.500	165.260	12879.28	229.04	221.91	-660.00	2244524.27	227137.74	0.42	
13032.00	1.370	223.930	12974.27	227.83	220.69	-660.68	2244523.59	227136.52	1.25	
13127.00	2.050	239.700	13069.23	226.18	219.02	-662.93	2244521.33	227134.85	0.86	
13222.00	2.060	231.360	13164.16	224.29	217.09	-665.73	2244518.53	227132.92	0.31	
13317.00	0.680	230.710	13259.14	222.88	215.67	-667.50	2244516.76	227131.50	1.45	
13412.00	0.970	255.170	13354.13	222.33	215.11	-668.72	2244515.55	227130.94	0.47	
13507.00	1.170	300.890	13449.11	222.64	215.40	-670.33	2244513.94	227131.23	0.90	
13602.00	0.740	294.880	13544.10	223.41	216.16	-671.72	2244512.55	227131.99	0.46	
13697.00	1.050	310.380	13639.09	224.25	216.98	-672.94	2244511.33	227132.81	0.41	
13793.00	3.720	327.310	13734.99	227.46	220.17	-675.29	2244508.98	227136.00	2.85	
13824.00	6.400	330.130	13765.87	229.82	222.52	-676.69	2244507.57	227138.34	8.68	
13856.00	9.460	330.170	13797.56	233.68	226.34	-678.89	2244505.37	227142.17	9.56	
13888.00	12.090	328.840	13828.99	238.86	231.49	-681.93	2244502.33	227147.32	8.25	
13919.00	14.910	330.950	13859.14	245.16	237.76	-685.55	2244498.72	227153.59	9.23	
13951.00	17.180	335.310	13889.89	253.10	245.65	-689.52	2244494.74	227161.48	8.03	
13983.00	18.800	339.640	13920.32	262.27	254.78	-693.29	2244490.97	227170.61	6.56	
14014.00	21.130	342.480	13949.46	272.32	264.80	-696.71	2244487.55	227180.62	8.14	
14046.00	23.040	345.030	13979.11	283.91	276.35	-700.07	2244484.20	227192.18	6.68	
14078.00	24.480	349.600	14008.40	296.51	288.92	-702.88	2244481.38	227204.75	7.30	
14110.00	26.570	352.330	14037.28	310.15	302.54	-705.03	2244479.23	227218.36	7.49	
14141.00	28.360	352.900	14064.78	324.34	316.71	-706.87	2244477.40	227232.54	5.84	
14173.00	30.390	353.470	14092.67	339.95	332.30	-708.73	2244475.54	227248.13	6.40	
14205.00	32.480	352.990	14119.97	356.54	348.87	-710.70	2244473.57	227264.70	6.58	
14236.00	34.970	352.490	14145.75	373.63	365.94	-712.88	2244471.39	227281.77	8.08	
14249.35†	36.393	352.390	14156.59	381.36	373.66	-713.90	2244470.36	227289.49	10.66	Cross 165 FSL
14268.00	38.380	352.260	14171.41	392.60	384.88	-715.41	2244468.85	227300.71	10.66	
14300.00	42.420	351.910	14195.77	413.17	405.42	-718.27	2244465.99	227321.25	12.64	
14331.00	45.430	351.940	14218.10	434.49	426.71	-721.29	2244462.97	227342.54	9.71	
14363.00	47.990	351.470	14240.04	457.57	449.76	-724.65	2244459.61	227365.58	8.07	

14395.00	50.450	351.990	14260.94	481.58	473.73	-728.14	2244456.13	227389.56	7.79
14426.00	52.930	352.150	14280.16	505.71	497.82	-731.49	2244452.77	227413.65	8.01
14458.00	55.590	352.320	14298.84	531.48	523.56	-735.00	2244449.27	227439.38	8.32
14490.00	58.350	352.720	14316.29	558.11	550.15	-738.49	2244445.77	227465.98	8.69
14521.00	61.740	353.250	14331.76	584.80	576.81	-741.77	2244442.50	227492.64	11.04
14553.00	64.230	353.500	14346.30	613.15	605.12	-745.06	2244439.21	227520.95	7.81
14586.00	66.760	353.690	14359.98	643.02	634.96	-748.40	2244435.86	227550.79	7.68
14617.00	69.910	353.860	14371.43	671.69	663.60	-751.53	2244432.74	227579.42	10.17
14649.00	73.080	354.390	14381.58	701.91	693.78	-754.63	2244429.63	227609.61	10.03
14681.00	75.330	355.070	14390.29	732.59	724.44	-757.46	2244426.81	227640.27	7.32
14712.00	77.860	355.760	14397.48	762.68	754.50	-759.87	2244424.40	227670.32	8.44
14744.00	80.560	356.910	14403.47	794.06	785.86	-761.88	2244422.39	227701.69	9.15
14776.00	83.140	357.890	14408.00	825.72	817.50	-763.31	2244420.95	227733.33	8.61



Actual Wellpath Report

Holden 1-15H10 actual svy - final (TD @ 19064 md)
Page 6 of 8



REFERENCE WELLPATH IDENTIFICATION

Operator	XTO Energy	Slot	Holden 1-15H10 (Felderhoff 30)
Area	Oklahoma	Well	SL 215 FNL, 1150 FWL Sec 15
Field	Love County, OK (XTO) NAD27 / Grid N	Wellbore	Actual Holden 1-15H10
Facility	Holden 1-15H10 -7S-1E		

WELLPATH DATA (231 stations)

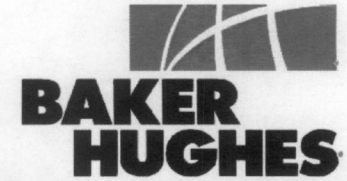
MD [ft]	Inclination [°]	Azimuth [°]	TVD [ft]	Vert Sect [ft]	North [ft]	East [ft]	Grid East [US ft]	Grid North [US ft]	DLS [°/100ft]	Comments
14808.00	84.630	358.430	14411.41	857.53	849.31	-764.33	2244419.93	227765.13	4.95	
14839.00	85.840	359.160	14413.99	888.42	880.19	-764.98	2244419.28	227796.02	4.55	
14871.00	88.920	0.310	14415.45	920.38	912.15	-765.13	2244419.13	227827.98	10.27	
14934.00	93.670	0.990	14414.03	983.33	975.11	-764.42	2244419.85	227890.94	7.62	
15029.00	95.550	0.500	14406.39	1077.99	1069.79	-763.18	2244421.08	227985.62	2.04	
15124.00	95.780	0.100	14397.01	1172.51	1164.33	-762.69	2244421.57	228080.15	0.48	
15220.00	98.580	0.300	14385.02	1267.74	1259.57	-762.36	2244421.91	228175.39	2.92	
15313.00	97.870	359.670	14371.71	1359.78	1351.61	-762.38	2244421.88	228267.43	1.02	
15408.00	97.750	0.200	14358.80	1453.89	1445.73	-762.49	2244421.78	228361.55	0.57	
15503.00	98.000	1.100	14345.79	1547.97	1539.82	-761.42	2244422.84	228455.64	0.97	
15598.00	95.520	0.730	14334.60	1642.27	1634.14	-759.92	2244424.35	228549.96	2.64	
15693.00	95.300	0.330	14325.65	1736.83	1728.72	-759.04	2244425.22	228644.54	0.48	
15788.00	93.540	359.270	14318.33	1831.54	1823.43	-759.37	2244424.89	228739.25	2.16	
15883.00	93.270	0.010	14312.68	1926.37	1918.26	-759.97	2244424.30	228834.08	0.83	
15978.00	93.140	358.490	14307.37	2021.22	2013.10	-761.21	2244423.05	228928.92	1.60	
16073.00	92.770	358.850	14302.47	2116.08	2107.95	-763.41	2244420.85	229023.76	0.54	
16169.00	91.260	359.210	14299.10	2212.02	2203.87	-765.04	2244419.23	229119.69	1.62	
16264.00	91.600	0.410	14296.73	2306.98	2298.84	-765.35	2244418.91	229214.65	1.31	
16296.00	90.490	0.220	14296.14	2338.97	2330.83	-765.18	2244419.09	229246.65	3.52	
16359.00	89.200	358.740	14296.32	2401.97	2393.83	-765.75	2244418.52	229309.64	3.12	
16454.00	89.850	359.440	14297.10	2496.97	2488.81	-767.26	2244417.01	229404.62	1.01	
16550.00	88.340	358.720	14298.62	2592.95	2584.78	-768.80	2244415.47	229500.60	1.74	
16645.00	87.840	357.080	14301.79	2687.86	2679.66	-772.28	2244411.99	229595.47	1.80	
16709.00	90.090	356.790	14302.94	2751.79	2743.55	-775.70	2244408.57	229659.37	3.54	
16740.00	90.830	356.950	14302.69	2782.76	2774.51	-777.39	2244406.87	229690.32	2.44	
16836.00	92.240	356.000	14300.12	2878.60	2870.29	-783.29	2244400.97	229786.10	1.77	
16931.00	93.170	357.300	14295.64	2973.38	2965.02	-788.84	2244395.43	229880.83	1.68	
17026.00	93.360	359.450	14290.23	3068.20	3059.82	-791.52	2244392.74	229975.63	2.27	
17122.00	92.270	0.440	14285.51	3164.08	3155.70	-791.62	2244392.65	230071.51	1.53	
17217.00	92.550	359.450	14281.52	3258.99	3250.61	-791.71	2244392.56	230166.43	1.08	
17312.00	90.460	357.750	14279.02	3353.94	3345.54	-794.03	2244390.24	230261.35	2.84	
17392.00	92.000	358.660	14277.30	3433.90	3425.48	-796.53	2244387.73	230341.29	2.24	

17502.00	90.800	359.790	14274.62	3543.87	3535.44	-798.02	2244386.24	230451.25	1.50
17598.00	90.490	1.010	14273.54	3639.84	3631.43	-797.35	2244386.91	230547.24	1.31
17661.00	86.450	359.240	14275.22	3702.80	3694.39	-797.21	2244387.05	230610.20	7.00
17725.00	87.260	359.010	14278.73	3766.70	3758.28	-798.19	2244386.08	230674.09	1.32
17789.00	87.750	0.220	14281.52	3830.64	3822.22	-798.62	2244385.65	230738.03	2.04
17884.00	88.360	0.610	14284.74	3925.57	3917.16	-797.93	2244386.33	230832.97	0.76
17979.00	88.980	1.310	14286.94	4020.51	4012.12	-796.34	2244387.93	230927.93	0.98
18074.00	88.520	2.220	14289.02	4115.40	4107.05	-793.41	2244390.85	231022.86	1.07
18169.00	88.980	1.180	14291.09	4210.30	4201.99	-790.60	2244393.67	231117.79	1.20
18264.00	89.320	359.780	14292.50	4305.27	4296.97	-789.80	2244394.46	231212.78	1.52
18359.00	89.570	359.120	14293.42	4400.26	4391.96	-790.71	2244393.55	231307.77	0.74
18454.00	89.750	359.780	14293.98	4495.26	4486.96	-791.62	2244392.64	231402.76	0.72
18549.00	89.410	357.710	14294.68	4590.25	4581.93	-793.70	2244390.56	231497.73	2.21



Actual Wellpath Report

Holden 1-15H10 actual svy - final (TD @ 19064 md)
Page 7 of 8



REFERENCE WELLPATH IDENTIFICATION

Operator	XTO Energy	Slot	Holden 1-15H10 (Felderhoff 30)
Area	Oklahoma	Well	SL 215 FNL, 1150 FWL Sec 15
Field	Love County, OK (XTO) NAD27 / Grid N	Wellbore	Actual Holden 1-15H10
Facility	Holden 1-15H10 -7S-1E		

WELLPATH DATA (231 stations)

MD [ft]	Inclination [°]	Azimuth [°]	TVD [ft]	Vert Sect [ft]	North [ft]	East [ft]	Grid East [US ft]	Grid North [US ft]	DLS [°/100ft]	Comments
18644.00	90.340	357.900	14294.89	4685.21	4676.85	-797.34	2244386.92	231592.66	1.00	
18739.00	91.200	358.320	14293.61	4780.18	4771.79	-800.48	2244383.79	231687.59	1.01	
18835.00	92.090	357.920	14290.85	4876.11	4867.70	-803.62	2244380.64	231783.50	1.02	
18930.00	91.200	359.560	14288.13	4971.06	4962.63	-805.71	2244378.55	231878.43	1.96	
19012.00	90.150	359.840	14287.16	5053.05	5044.63	-806.14	2244378.12	231960.43	1.33	
19064.00	89.950	0.130	14287.12	5105.05	5096.63	-806.15	2244378.11	232012.43	0.68	Actual BHL 393.97 FNL 398.86 FWL Sec 10

TARGETS

Name	MD [ft]	TVD [ft]	North [ft]	East [ft]	Grid East [US ft]	Grid North [US ft]	Latitude	Longitude	Shape
Holden1-15H10 Pt @ 165 FSL		1000.00	373.30	-753.89	2244430.38	227289.13	33°57'18.797"N	97°11'38.370"W	point
Holden1-15H10 Vertical pt		12635.00	220.00	-662.00	2244522.26	227135.83	33°57'17.274"N	97°11'37.294"W	point
Holden1-15H10 BHL 50 FNL 400 FWL		14193.00	5440.59	-808.73	2244375.53	232356.39	33°58'08.929"N	97°11'38.541"W	point

WELLPATH COMPOSITION - Ref Wellbore: Actual Holden 1-15H10 Ref Wellpath: Holden 1-15H10 actual svy - final (TD @ 19064 md)

Start MD [ft]	End MD [ft]	Positional Uncertainty Model	Log Name/Comment	Wellbore
26.00	19012.00	NaviTrak (Standard)	NaviTrak	Actual Holden 1-15H10
19012.00	19064.00	Blind Drilling (std)	Projection to bit	Actual Holden 1-15H10



Actual Wellpath Report

Holden 1-15H10 actual svy - final (TD @ 19064 md)
Page 8 of 8

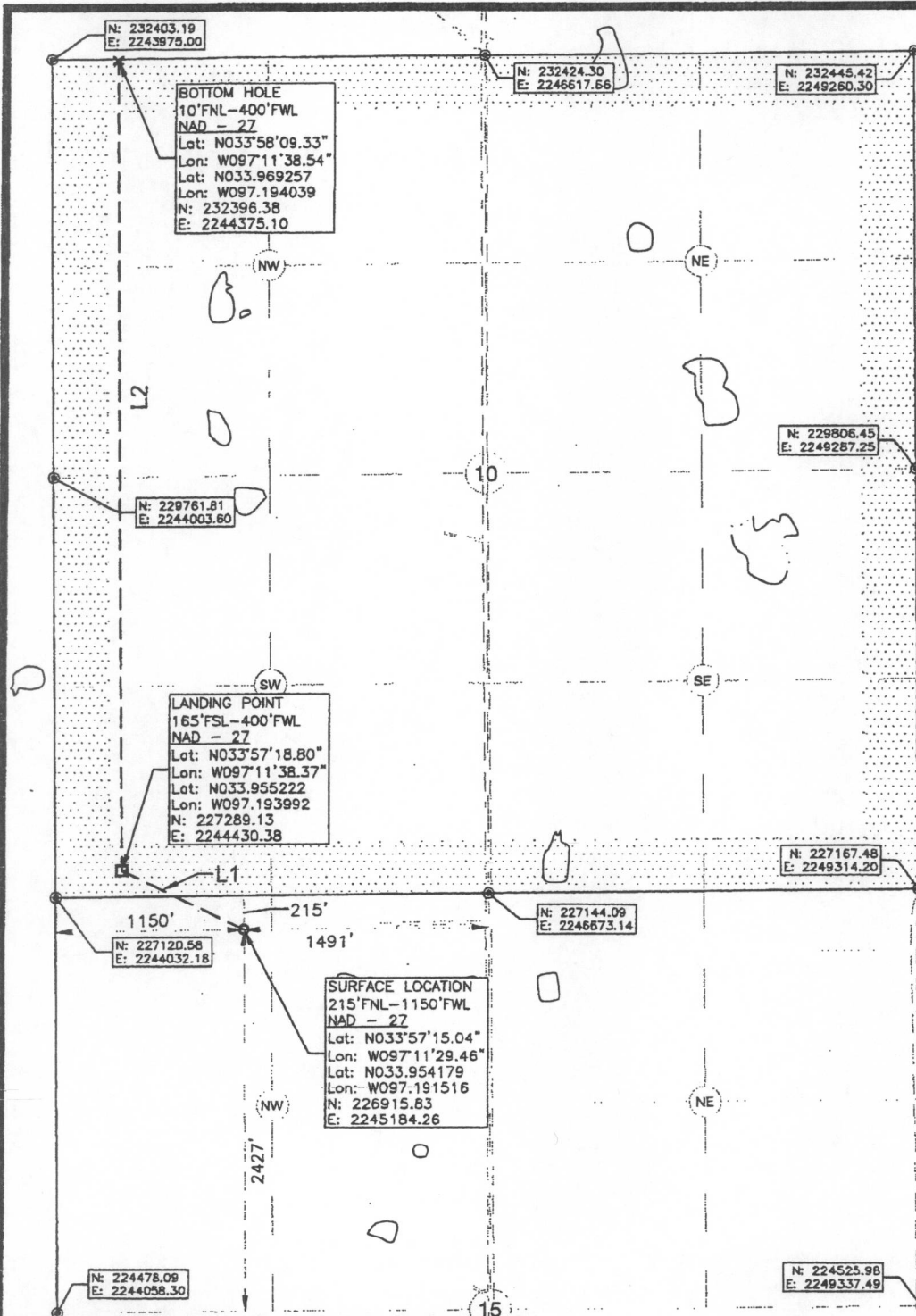


REFERENCE WELLPATH IDENTIFICATION

Operator	XTO Energy	Slot	Holden 1-15H10 (Felderhoff 30)
Area	Oklahoma	Well	SL 215 FNL, 1150 FWL Sec 15
Field	Love County, OK (XTO) NAD27 / Grid N	Wellbore	Actual Holden 1-15H10
Facility	Holden 1-15H10 -7S-1E		

WELLPATH COMMENTS

MD [ft]	Inclination [°]	Azimuth [°]	TVD [ft]	Comment
0.00	0.000	253.640	0.00	SL (215 FNL 1150 FWL) Sec 15
12057.38	7.161	288.513	12001.48	Cross Section 10 South Line
14249.35	36.393	352.390	14156.59	Cross 165 FSL
19064.00	89.950	0.130	14287.12	Actual BHL 393.97 FNL 398.86 FWL Sec 10



HOLDEN 1-15H10

SECTION 15
TOWNSHIP 7 SOUTH, RANGE 1 EAST
LOVE COUNTY, OKLAHOMA



LEGEND:

- EXISTING WELL HEAD/PRODUCTION WELL
- PROPOSED SURFACE HOLE (PSHL)
- SECTION CORNER
- PROPOSED LANDING POINT (LP)
- PROPOSED BOTTOM HOLE (PBHL)
- DRILLING UNIT

Line Table		
Line #	Azimuth	Length
L1	296.343564	841.25
L2	359.379917	5107.55



NOTES:
1. This survey does not represent a boundary survey. It is for Geographical Information Systems (GIS) purposes only as instructed by the client and is not to be relied upon for the establishment of fences, buildings or other further improvement lines. Positions were taken with Survey Grade RTK GPS and NGS OPUS processed control using the NAD27 Oklahoma South State Plane Coordinate System.
2. Bottom hole information provided by operator listed, not surveyed and corner coordinates are taken from points surveyed in field.

Surface Hole Location: 215' From North Line Section 15
1150' From West Line Section 15

Latitude: N33.954179° (NAD 27)
Longitude: W97.191516° (NAD 27)
Latitude: N33.954279° (NAD 83)
Longitude: W97.191808° (NAD 83)

Ground Elev: 870.2

Landing Point Location: 165' From South Line Section 10
400' From West Line Section 10

Bottom Hole Location: 10' From North Line Section 10
400' From West Line Section 10

Drilling Unit: Section 10, T7S, R1E

Operator: XTO Energy, Inc.

Best Accessibility to Location: From East

Distance & Direction from Hwy Jct or Town:
From the Intersection of Hwy 32 and Interstate 35 go West 3.0mi on Hwy 32 to Bowles Rd. then 1.0mi North to Access Rd. Well Location to the West.

I, Chad Fox, a duly registered Professional Land Surveyor in the State of OKLAHOMA, do hereby certify that the drawing shown hereon was completed and represents a good and accurate survey made upon the ground by me or under my direct supervision.

CHAD FOX P.L.S. NO. 1758
C.O.A. NO. 6186 EX. DATE: 31JAN14



CDF AND ASSOCIATES, LLC.

404 Coggins Ave. Poteau, OK 74953 (918) 721-1262
Certificate of Authorization No. 6186

JOB NO: XTO/WP13/HOLDEN 1-15H10 DRAWN BY: LD
DATE: 25/NOV/13 REV: B SCALE: 1" = 1,000' SHT NO. 1