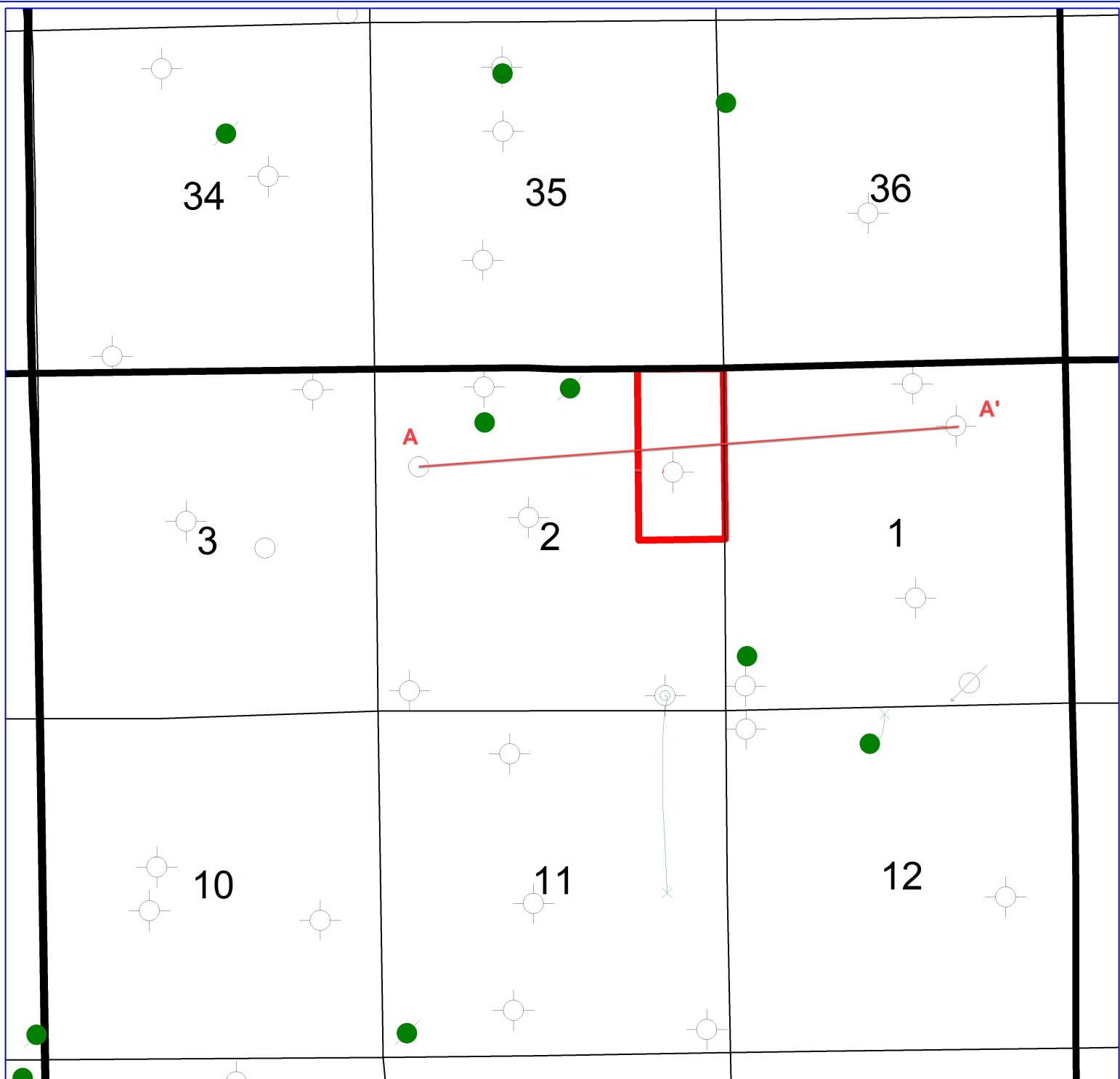


Susan Johnson  
 CSR  
 Exhibit 1  
 Date: 2-9-2021



<b>Reach Oil and Gas</b>
CD 202100055
E/2 NE/4 Sec 2-7N-5E Seminole County, Oklahoma
<p>0 2,500 FEET</p>
<b>WELL SYMBOLS</b> <ul style="list-style-type: none"> <li> Location Only</li> <li> Oil Well</li> <li> Dry Hole</li> <li> Injection Well</li> <li> Plugged &amp; Abandoned Oil Well</li> </ul>
January 25, 2021